

ARTICLE 21 WATER STATE WATER PROJECT

March 21, 2018

Tasmin Eusuff

Department of Water Resources (DWR)



PRESENTATION OUTLINE

- What is Article 21 (Art.21) Water
- Availability and Allocation Process
- History of Allocation
- Example



ARTICLE 21 WATER

- Refers to Art.21 of the Long-Term Water Supply Contract
- Interruptible Water/Wet Weather Water
- No storage in SWP facilities
- No impact to contractor's approved Table A
- No harm or injuries to other contractors or project operation



AVAILABILITY & ALLOCATION

- Availability is determined by Operations
- It is the difference between available pumping and project demands
- A signed agreement is required between the Department and the interested contractor
- Contractors are notified of availabilities
- Available Art.21 is allocated among interested contractors proportionate to their Table A

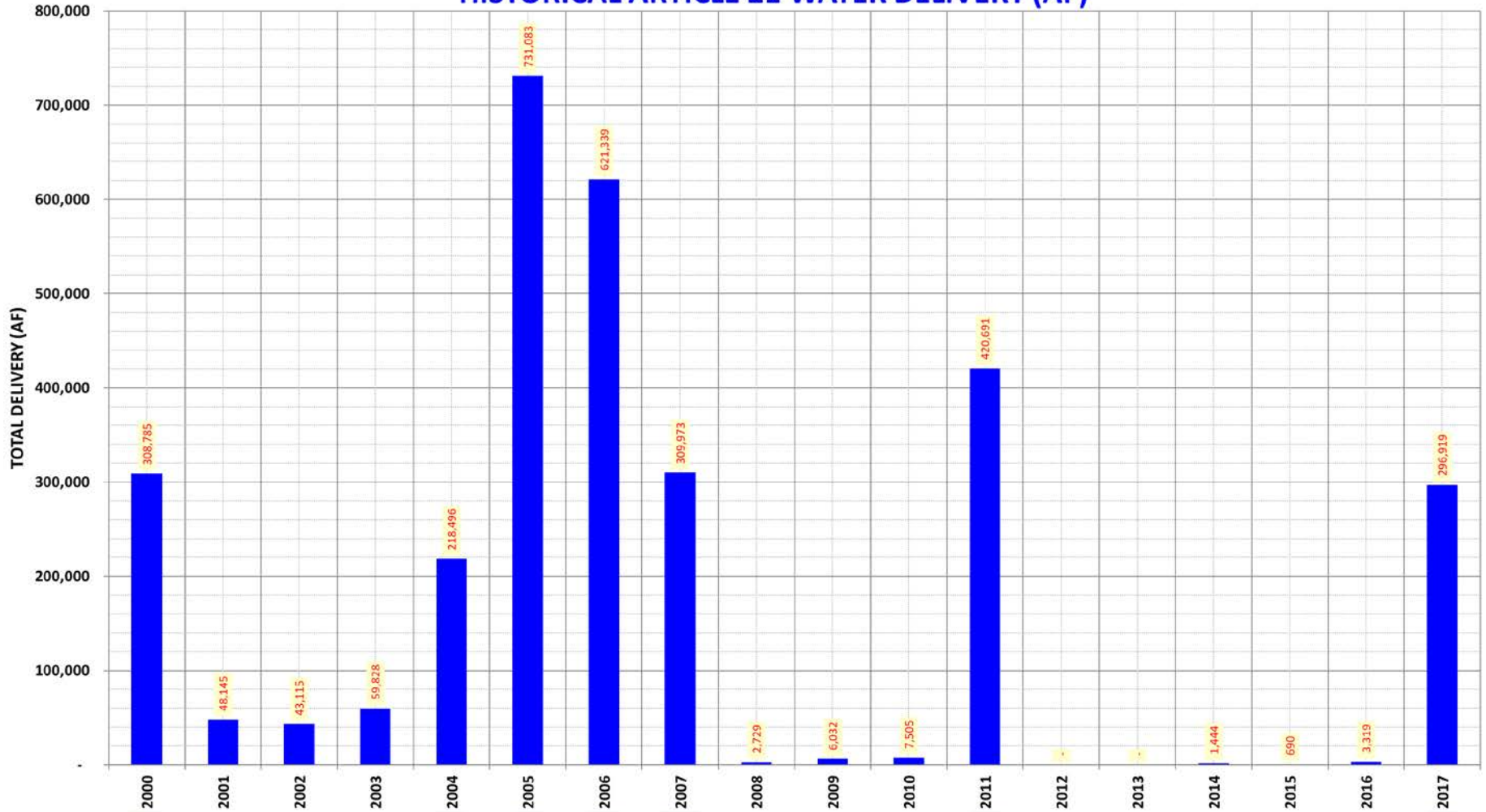


AVAILABILITY & ALLOCATION

- DWR informs contractors of Art.21 availability, and receives their Art.21 requests
- Contractors submit weekly schedules of Non-Art.21 (Table A) and CO demands to DWR
- DWR determines and informs contractors of Art.21 allocations



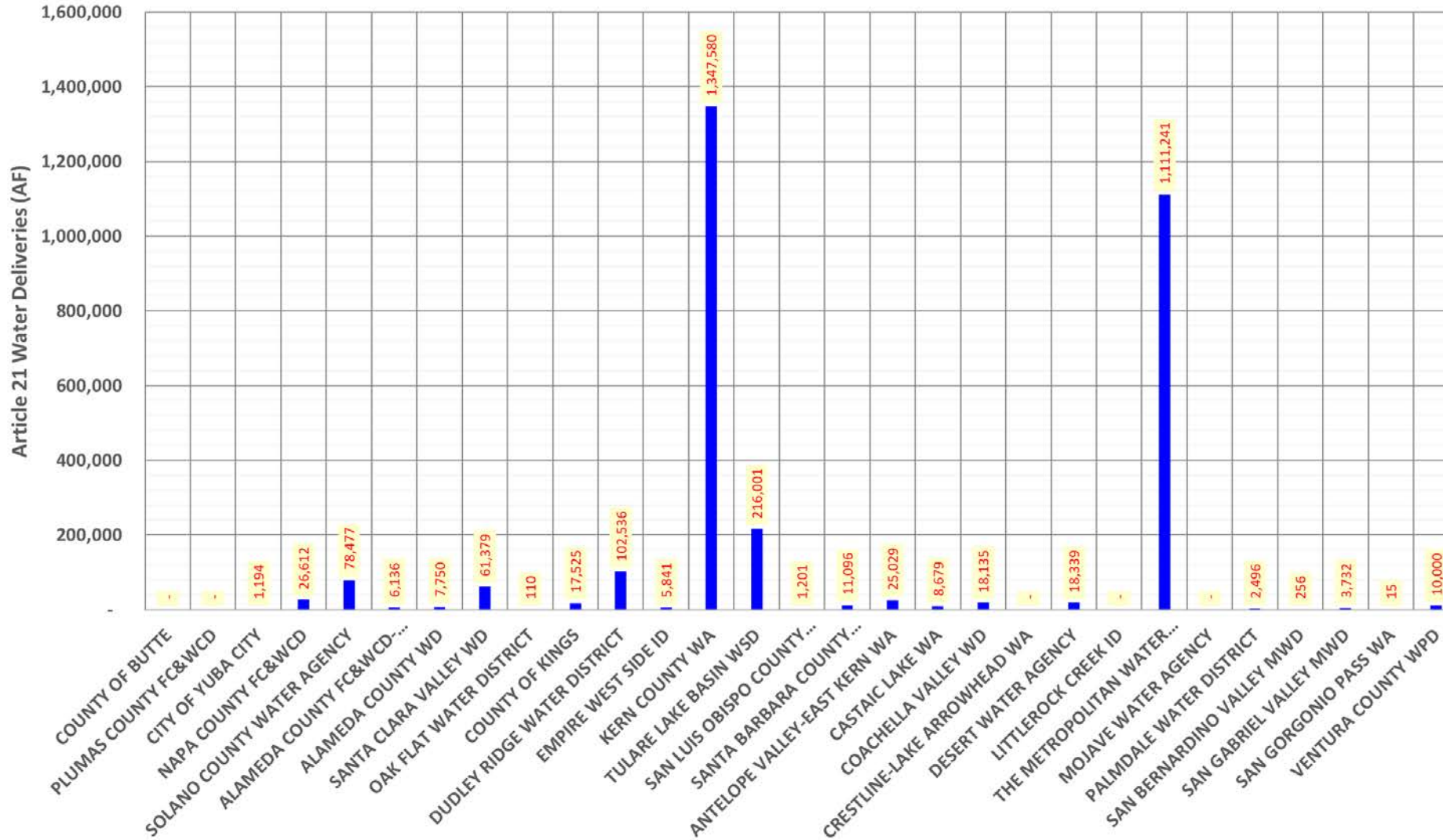
STATE WATER PROJECT HISTORICAL ARTICLE 21 WATER DELIVERY (AF)



Historical Art.21 Delivery

- ▶ Historical Art.21 deliveries shown 2000-2017
- ▶ Significant Art.21 deliveries correspond to wet years
- ▶ High deliveries in the recent 18 years are 2000-2007, 2011 and 2017
- ▶ In 2005, the maximum occurred more than 731 TAF
- ▶ In 2011, the amount was 420 TAF and in 2017, the amount was 297 TAF

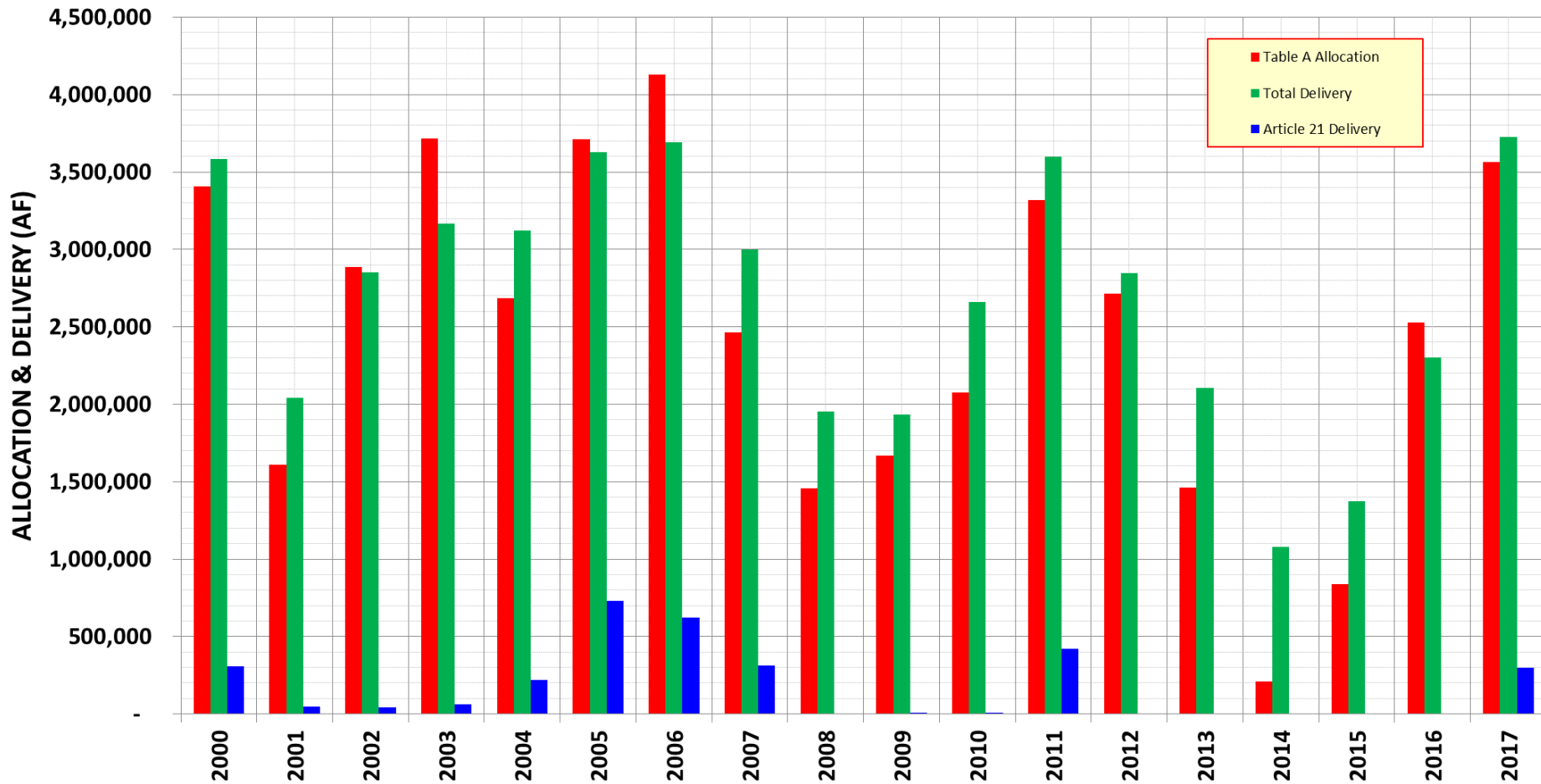
SWP CONTRACTORS - ARTICLE 21 TOTAL DELIVERY (AF) Y2000-Y2017



SWP Contractor's Art.21 Delivery

- ▶ Historical Art.21 deliveries to SWP contractors shown 2000-2017
- ▶ Kern County Water Agency took the most delivery of 1,348 TAF
- ▶ The second highest was Metropolitan 1,111 TAF
- ▶ Rest of them were 200 TAF and less

STATE WATER PROJECT ALLOCATION AND WATER DELIVERY (AF)



ANNUAL PERCENTAGE ARTICLE 21 WATER DELIVERY (AF) Y2000-Y2017

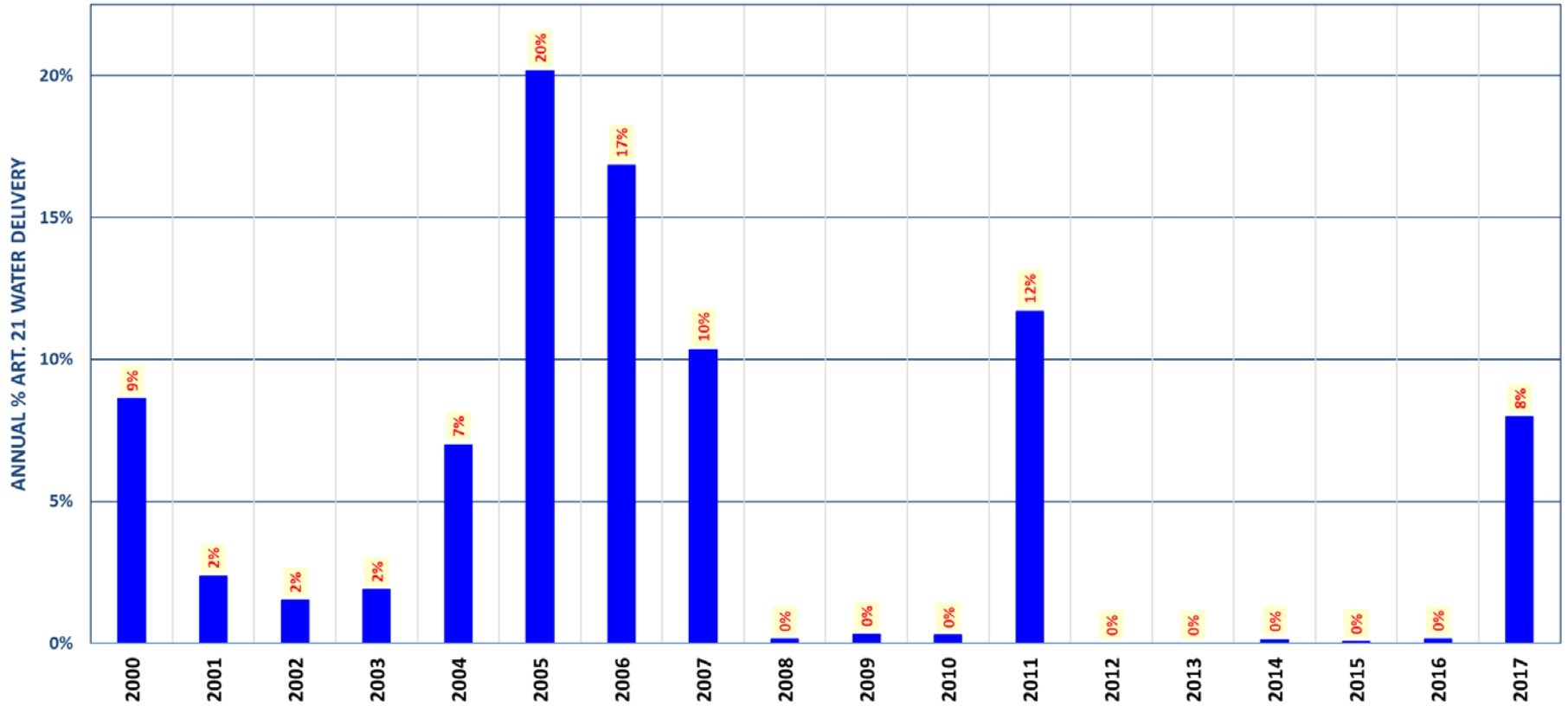


TABLE A Allocation & Water Delivery

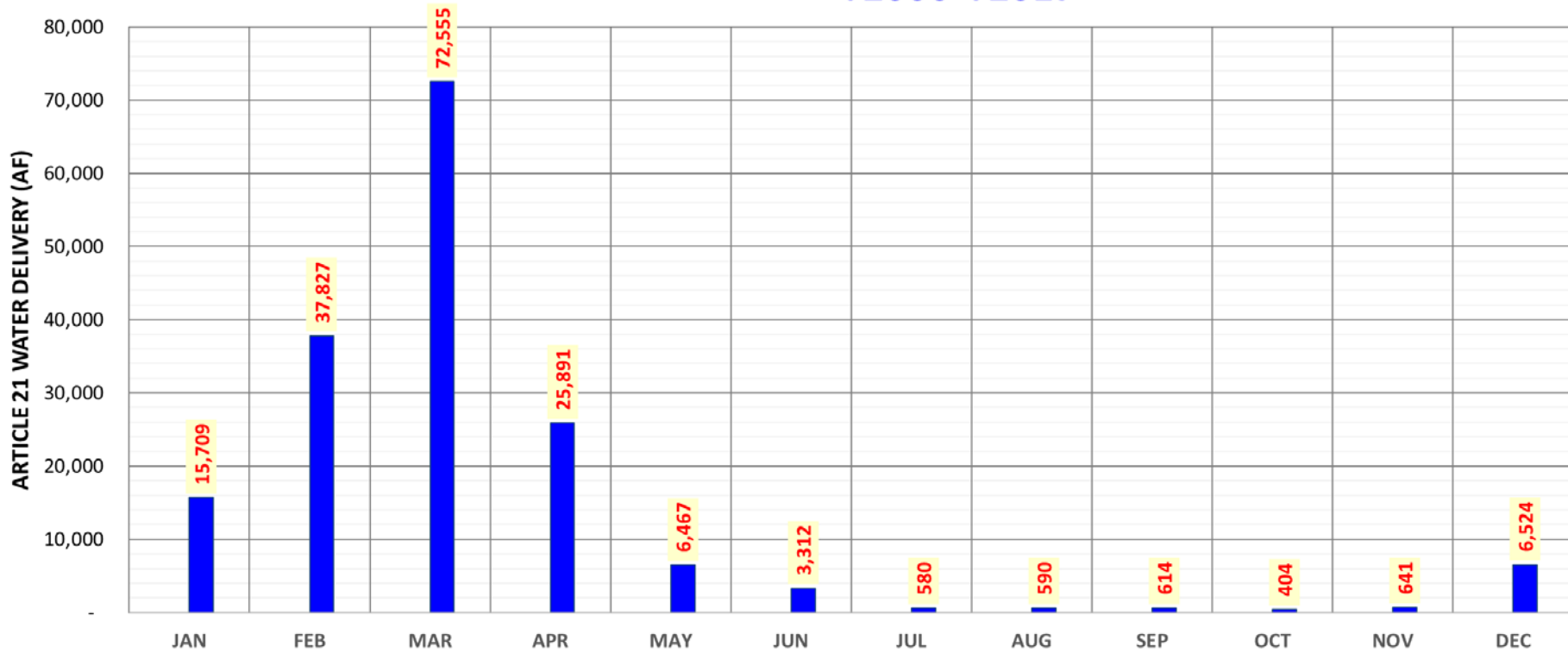
- ▶ Comparison of Art.21 delivery with Table A allocation and total delivery
- ▶ The highest annual percentage was 20% of Table A in 2005
- ▶ The percentage was 12% in 2011 and 8% in 2017

STATE WATER PROJECT

ARTICLE 21 WATER DELIVERY - MONTHLY DISTRIBUTION (AF)

YEAR	JAN	FEB	MAR	APR	MAY	JUN	JUL	AUG	SEP	OCT	NOV	DEC	TOTAL
2000	-	94,467	214,318	-	-	-	-	-	-	-	-	-	308,785
2001	-	1,324	45,833	-	-	-	-	-	-	-	-	988	48,145
2002	532	46	10,899	29,842	1,796	-	-	-	-	-	-	-	43,115
2003	-	-	49,616	7,932	1,210	1,070	-	-	-	-	-	-	59,828
2004	1,145	658	209,741	1,126	5,786	-	-	-	-	-	-	40	218,496
2005	55,387	166,704	220,067	146,256	21,798	48,791	1,162	1,846	2,644	1,175	-	65,253	731,083
2006	57,599	259,840	183,153	22,575	25,500	308	1,951	5,464	4,316	3,082	8,843	48,708	621,339
2007	166,366	81,762	54,377	1,429	5,677	-	-	-	-	-	-	362	309,973
2008	303	247	-	202	1,977	-	-	-	-	-	-	-	2,729
2009	-	574	-	229	5,229	-	-	-	-	-	-	-	6,032
2010	257	867	362	1,037	2,731	1,493	-	-	-	-	-	758	7,505
2011	-	43,113	217,011	146,024	1,450	1,691	2,475	2,543	3,210	1,808	1,366	-	420,691
2012	-	-	-	-	-	-	-	-	-	-	-	-	-
2013	-	-	-	-	-	-	-	-	-	-	-	-	-
2014	-	99	415	465	-	-	-	-	-	-	-	465	1,444
2015	437	-	-	-	253	-	-	-	-	-	-	-	690
2016	743	826	30	395	129	-	-	-	-	-	330	866	3,319
2017	-	30,366	100,172	108,534	42,863	6,270	4,849	771	889	1,210	995	-	296,919
AVE	15,709	37,827	72,555	25,891	6,467	3,312	580	590	614	404	641	6,524	171,116

AVERAGE MONTHLY ARTICLE 21 WATER DELIVERY (AF) Y2000-Y2017



Art.21 Monthly Water Delivery

- ▶ Illustration of average monthly deliveries for all contractors
- ▶ Again, corresponds to higher Art.21 deliveries in wet months
- ▶ The highest average delivery of Art.21 was in March, 2005 (73 TAF)
- ▶ The second highest delivery of Art.21 was in February, 2006 (38 TAF)

EXAMPLE

2017 ART.21 PROGRAM

- Managed on a Weekly Basis
- Started 2nd Week of February 2017, ended 2nd Week of May 2017
- One week interruption



2017 ART.21 PROGRAM (Cont.)

- Eight participating contractors
- A Total of 637,068 AF available
- A Total of 525,745 AF requested
- A Total of 405,357 AF allocated
- A Total of 296,919 AF delivered



Questions?

For further questions, please contact:

Tasmin Eusuff @ Tasmin.Eusuff@water.ca.gov or

Mahmoud Mabrouk @ Mahmoud.Mabrouk@water.ca.gov

