



# Chino Basin Program Update

California Water Commission Meeting

May 20, 2026

Kevin Alexander, General Manager | Elizabeth Hurst, Chino Basin Program Manager



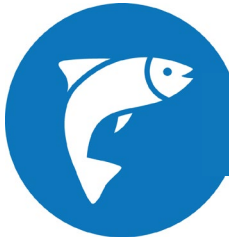
# CBP Update Overview



- Overview of CBP
- Contracts and Agreements Status
- Program Funding
- Construction & Implementation Milestones



# 100% Guaranteed and Dedicated to Delta



Ecosystem  
Benefit



Emergency  
Response



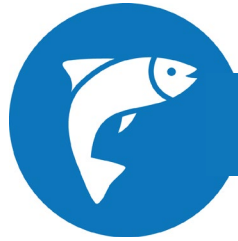
Water Quality



- Provides ecological benefits north & south of Delta
- New source of conjunctively managed water
- Not dependent on climate



# New Source of Water, Not Dependent on the Delta



Ecosystem Benefit



Recycled Water



Table A Water Transfer



- Reliable new dedicated water supply, backed by recycled water
- Flexible delivery of water offered annually
- State Water Project Contract program Partner:  
Metropolitan Water District of Southern California



# Utilize Capacity from Existing Groundwater Aquifer



Emergency Response



Water Quality



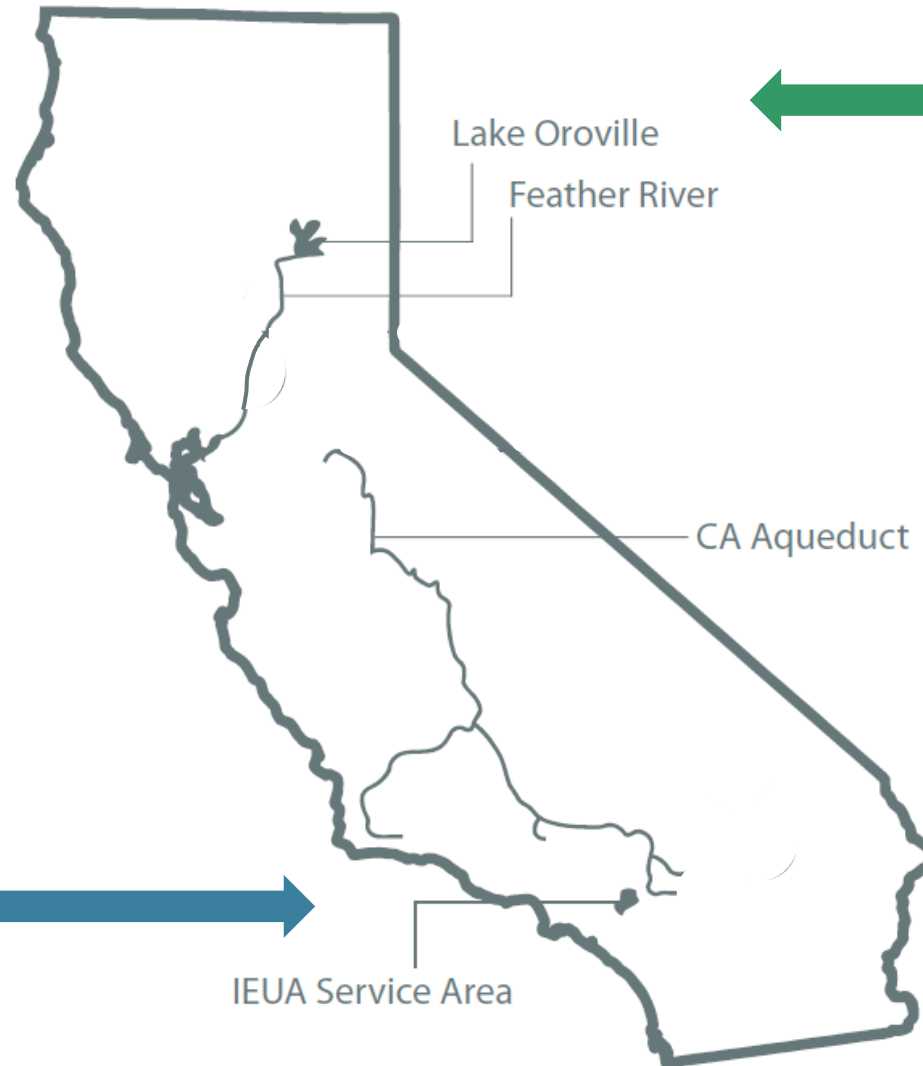
- Increase water stored in the Chino Groundwater Basin
- Leverage existing infrastructure
- Improve water quality by storing purified advanced treated recycled water supplies



# Chino Basin Program Overview

## Southern California

- Advanced treatment of recycled water supplies
- Store treated water in the Chino Groundwater Basin
- Pump stored groundwater to customers to offset State Water Project Supplies when a pulse flow occurs



## Northern California

- Release water from Lake Oroville reservoir as a pulse flow to the Feather River to improve survival of migrating salmon
- Water flows downstream through the Bay Delta, to the ocean



# Pulse Flow Coordination (2024-2025)

## IEUA, Metropolitan, CDFW, DWR Pulse Flow Simulation

### IEUA

	Year	Call Year	20-Y Target	Remaining Performance	
Storage	Stored Water (AF)	1	13,800	175,000	368,000
Activities	Water Removed (Irons)		12,800	908,000	288,000
Production	Self-Net Water Production		900,000	900,000	900,000
Activities	Transfer/Cost Credit		75,000	75,000	75,000
Net Cal	Pulse Flow Release	0	175,000	875,000	

November: IEUA polls local agencies to confirm production capabilities and develop a draft operating plan

December: IEUA submits draft operating plan and account balance to Metropolitan

January: IEUA compiles Metropolitan Ability to Exchange table ([link: IEUA](#)) and submits both to CDFW and State Agencies

- 15,000 AF available in storage each year
- Partners will purchase stored water and hold it in their groundwater accounts. No change in imported water purchases

### Metropolitan

SWP Volume Allocation	Metropolitan Ability to Exchange (AF)
1%	15,000
2%	30,000
3%	45,000
4%	60,000
5%	75,000
6%	90,000
7%	105,000
8%	120,000
9%	135,000
10%	150,000
11%	165,000
12%	180,000
13%	195,000
14%	210,000
15%	225,000
16%	240,000
17%	255,000
18%	270,000
19%	285,000
20%	300,000

### CDFW

Does CDFW want a 15,000 AF Pulse Flow? YES/NO

January: Receives CBP account balance and the Transfer Table from IEUA

Hold until CDFW requests a Pulse Flow

By June 1 CDFW must request a pulse flow from IEUA | Metropolitan | DWR so local partners can begin production and certification in July

CDFW communicates timing and duration of Pulse Flow to DWR Operators, and tracks ecosystem response for reporting

### DWR

Are there any SWP operational constraints? YES/NO

If no operational constraints, DWR releases Pulse Flow per CDFW's specifications

Total Volume Released is recorded and deducted from IEUA's 375,000 AF Pulse Flow CAPB

### Performance Scenarios based on historic hydrology and SWP Allocations

### Strategy: Say yes

Request Pulse Flow if SWP ≥30%, but less than 100%

Year	SWP Allocation by Month	Pulse Flow	Pulse Flow Volume	Pulse Flow Volume	# of Releases
1	100%	Yes	15,000	Max 50,000 AF	1
2	100%	Yes	15,000	Max 50,000 AF	1
3	100%	Yes	15,000	Max 50,000 AF	1
4	100%	Yes	15,000	45,000-40,000 AF	3
5	100%	Yes	15,000	45,000-40,000 AF	3
6	100%	Yes	15,000	30,000-25,000 AF	1
7	100%	Yes	15,000	30,000-25,000 AF	1
8	100%	Yes	15,000	35,000-10,000 AF	10
9	100%	Yes	15,000	35,000-10,000 AF	10
10	100%	Yes	15,000	35,000-10,000 AF	10
11	100%	Yes	15,000	35,000-10,000 AF	10
12	100%	Yes	15,000	35,000-10,000 AF	10
13	100%	Yes	15,000	35,000-10,000 AF	10
14	100%	Yes	15,000	35,000-10,000 AF	10
15	100%	Yes	15,000	35,000-10,000 AF	10
16	100%	Yes	15,000	35,000-10,000 AF	10
17	100%	Yes	15,000	35,000-10,000 AF	10
18	100%	Yes	15,000	35,000-10,000 AF	10
19	100%	Yes	15,000	35,000-10,000 AF	10
20	100%	Yes	15,000	35,000-10,000 AF	10
21	100%	Yes	15,000	35,000-10,000 AF	10
22	100%	Yes	15,000	35,000-10,000 AF	10
23	100%	Yes	15,000	35,000-10,000 AF	10
24	100%	Yes	15,000	35,000-10,000 AF	10
25	100%	Yes	15,000	35,000-10,000 AF	10
26	100%	Yes	15,000	35,000-10,000 AF	10
27	100%	Yes	15,000	35,000-10,000 AF	10
28	100%	Yes	15,000	35,000-10,000 AF	10
29	100%	Yes	15,000	35,000-10,000 AF	10
30	100%	Yes	15,000	35,000-10,000 AF	10

Baseline Assumptions:  
 ->100% and DWR can receive a pulse flow of 15,000-30%  
 ->100% able to store 15,000 AF/year  
 ->Local partners maintain 100% production capacity  
 ->100% and 100% efficiency credit of 20% applied to pulse flow releases

### Strategy: Goldilocks

Request if SWP is under 70%, goal of min. 30,000 AF Pulse

Year	SWP Allocation by Month	Pulse Flow	Pulse Flow Volume	Pulse Flow Volume	# of Releases
1	100%	Yes	15,000	Max 50,000 AF	1
2	100%	Yes	15,000	Max 50,000 AF	1
3	100%	Yes	15,000	Max 50,000 AF	1
4	100%	Yes	15,000	45,000-40,000 AF	3
5	100%	Yes	15,000	45,000-40,000 AF	3
6	100%	Yes	15,000	30,000-25,000 AF	1
7	100%	Yes	15,000	30,000-25,000 AF	1
8	100%	Yes	15,000	35,000-10,000 AF	10
9	100%	Yes	15,000	35,000-10,000 AF	10
10	100%	Yes	15,000	35,000-10,000 AF	10
11	100%	Yes	15,000	35,000-10,000 AF	10
12	100%	Yes	15,000	35,000-10,000 AF	10
13	100%	Yes	15,000	35,000-10,000 AF	10
14	100%	Yes	15,000	35,000-10,000 AF	10
15	100%	Yes	15,000	35,000-10,000 AF	10
16	100%	Yes	15,000	35,000-10,000 AF	10
17	100%	Yes	15,000	35,000-10,000 AF	10
18	100%	Yes	15,000	35,000-10,000 AF	10
19	100%	Yes	15,000	35,000-10,000 AF	10
20	100%	Yes	15,000	35,000-10,000 AF	10
21	100%	Yes	15,000	35,000-10,000 AF	10
22	100%	Yes	15,000	35,000-10,000 AF	10
23	100%	Yes	15,000	35,000-10,000 AF	10
24	100%	Yes	15,000	35,000-10,000 AF	10
25	100%	Yes	15,000	35,000-10,000 AF	10
26	100%	Yes	15,000	35,000-10,000 AF	10
27	100%	Yes	15,000	35,000-10,000 AF	10
28	100%	Yes	15,000	35,000-10,000 AF	10
29	100%	Yes	15,000	35,000-10,000 AF	10
30	100%	Yes	15,000	35,000-10,000 AF	10

Baseline Assumptions:  
 ->100% and DWR can receive a pulse flow of 15,000-30%  
 ->100% able to store 15,000 AF/year  
 ->Local partners maintain 100% production capacity  
 ->100% and 100% efficiency credit of 20% applied to pulse flow releases

### Strategy: Drier is dire

Request Pulse Flow if SWP is under 50%

Year	SWP Allocation by Month	Pulse Flow	Pulse Flow Volume	Pulse Flow Volume	# of Releases
1	100%	Yes	15,000	Max 50,000 AF	1
2	100%	Yes	15,000	Max 50,000 AF	1
3	100%	Yes	15,000	Max 50,000 AF	1
4	100%	Yes	15,000	45,000-40,000 AF	3
5	100%	Yes	15,000	45,000-40,000 AF	3
6	100%	Yes	15,000	30,000-25,000 AF	1
7	100%	Yes	15,000	30,000-25,000 AF	1
8	100%	Yes	15,000	35,000-10,000 AF	10
9	100%	Yes	15,000	35,000-10,000 AF	10
10	100%	Yes	15,000	35,000-10,000 AF	10
11	100%	Yes	15,000	35,000-10,000 AF	10
12	100%	Yes	15,000	35,000-10,000 AF	10
13	100%	Yes	15,000	35,000-10,000 AF	10
14	100%	Yes	15,000	35,000-10,000 AF	10
15	100%	Yes	15,000	35,000-10,000 AF	10
16	100%	Yes	15,000	35,000-10,000 AF	10
17	100%	Yes	15,000	35,000-10,000 AF	10
18	100%	Yes	15,000	35,000-10,000 AF	10
19	100%	Yes	15,000	35,000-10,000 AF	10
20	100%	Yes	15,000	35,000-10,000 AF	10
21	100%	Yes	15,000	35,000-10,000 AF	10
22	100%	Yes	15,000	35,000-10,000 AF	10
23	100%	Yes	15,000	35,000-10,000 AF	10
24	100%	Yes	15,000	35,000-10,000 AF	10
25	100%	Yes	15,000	35,000-10,000 AF	10
26	100%	Yes	15,000	35,000-10,000 AF	10
27	100%	Yes	15,000	35,000-10,000 AF	10
28	100%	Yes	15,000	35,000-10,000 AF	10
29	100%	Yes	15,000	35,000-10,000 AF	10
30	100%	Yes	15,000	35,000-10,000 AF	10

Baseline Assumptions:  
 ->100% and DWR can receive a pulse flow of 15,000-30%  
 ->100% able to store 15,000 AF/year  
 ->Local partners maintain 100% production capacity  
 ->100% and 100% efficiency credit of 20% applied to pulse flow releases

### SWP Allocation & Efficiency Credit Spinner

### Pulse Flow Volume Reference Tables

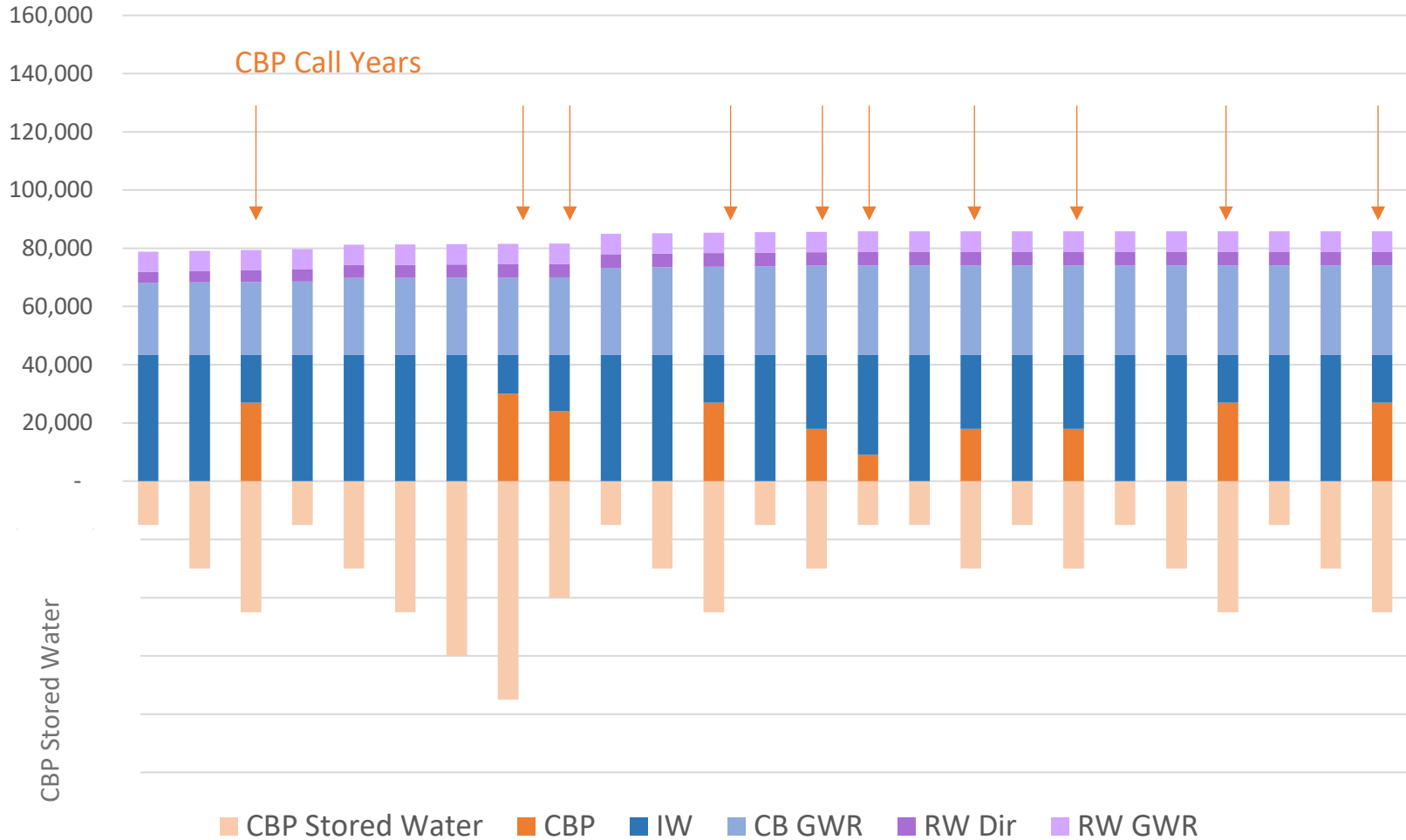
\*rounded to nearest thousand for discussion purposes

Metropolitan SWP Exchange	20% Efficiency Credit	Total Volume Released	Metropolitan SWP Exchange	20% Efficiency Credit	Total Volume Released
12,000 AF	1,000 AF	13,000 AF	12,000 AF	1,000 AF	13,000 AF
15,000 AF	1,000 AF	16,000 AF	15,000 AF	1,000 AF	16,000 AF
18,000 AF	1,000 AF	19,000 AF	18,000 AF	1,000 AF	19,000 AF
21,000 AF	1,000 AF	22,000 AF	21,000 AF	1,000 AF	22,000 AF
24,000 AF	1,000 AF	25,000 AF	24,000 AF	1,000 AF	25,000 AF
27,000 AF	1,000 AF	28,000 AF	27,000 AF	1,000 AF	28,000 AF
30,000 AF	1,000 AF	31,000 AF	30,000 AF	1,000 AF	31,000 AF
33,000 AF	1,000 AF	34,000 AF	33,000 AF	1,000 AF	34,000 AF
36,000 AF	1,000 AF	37,000 AF	36,000 AF	1,000 AF	37,000 AF
39,000 AF	1,000 AF	40,000 AF	39,000 AF	1,000 AF	40,000 AF
42,000 AF	1,000 AF	43,000 AF	42,000 AF	1,000 AF	43,000 AF
45,000 AF	1,000 AF	46,000 AF	45,000 AF	1,000 AF	46,000 AF
48,000 AF	1,000 AF	49,000 AF	48,000 AF	1,000 AF	49,000 AF
51,000 AF	1,000 AF	52,000 AF	51,000 AF	1,000 AF	52,000 AF
54,000 AF	1,000 AF	55,000 AF	54,000 AF	1,000 AF	55,000 AF
57,000 AF	1,000 AF	58,000 AF	57,000 AF	1,000 AF	58,000 AF
60,000 AF	1,000 AF	61,000 AF	60,000 AF	1,000 AF	61,000 AF
63,000 AF	1,000 AF	64,000 AF	63,000 AF	1,000 AF	64,000 AF
66,000 AF	1,000 AF	67,000 AF	66,000 AF	1,000 AF	67,000 AF
69,000 AF	1,000 AF	70,000 AF	69,000 AF	1,000 AF	70,000 AF
72,000 AF	1,000 AF	73,000 AF	72,000 AF	1,000 AF	73,000 AF
75,000 AF	1,000 AF	76,000 AF	75,000 AF	1,000 AF	76,000 AF
78,000 AF	1,000 AF	79,000 AF	78,000 AF	1,000 AF	79,000 AF
81,000 AF	1,000 AF	82,000 AF	81,000 AF	1,000 AF	82,000 AF
84,000 AF	1,000 AF	85,000 AF	84,000 AF	1,000 AF	85,000 AF
87,000 AF	1,000 AF	88,000 AF	87,000 AF	1,000 AF	88,000 AF
90,000 AF	1,000 AF	91,000 AF	90,000 AF	1,000 AF	91,000 AF
93,000 AF	1,000 AF	94,000 AF	93,000 AF	1,000 AF	94,000 AF
96,000 AF	1,000 AF	97,000 AF	96,000 AF	1,000 AF	97,000 AF
99,000 AF	1,000 AF	100,000 AF	99,000 AF	1,000 AF	100,000 AF





# CBP Performance Scenario



IW= Imported Water, CB GW= Chino Basin Groundwater, RW Dir= Recycled Water Direct Use, RW GWR= Recycled Water Groundwater Recharged

- CBP storage account grows by 15,000 AF each year.
- During call years, participating agencies reduce imported water purchases and replace up to 30,000 AF of imported water with CBP water



# Pulse Flow Simulation

## 1999-2024 Spring SWP Allocations

IEUA Stored Supply					CDFW Strategy		
	YEAR	Historic	DWR SWP March allocation	Table A Pulse Flow Possible?	"Bigger is Better" 50,000 AF Pulse Flow	"Goldielocks" 30,000 AF, SWP Alloc 70% or Less	"YES" Pulse Flow Requested Whenever Water Available
15,000	0	1999	100%	✓	X	X	X
15,000	1	2000	100%	✓			YES
15,000	2	2001	30%	✓		YES	YES
15,000	3	2002	60%	✓			YES
15,000	4	2003	50%	✓	YES	YES	YES
15,000	5	2004	65%	✓			YES
15,000	6	2005	60%	✓		YES	YES
15,000	7	2006	80%	✓	YES		YES
15,000	8	2007	60%	✓		YES	YES
15,000	9	2008	35%	✓			YES
15,000	10	2009	20%	no	X	X	X
15,000	11	2010	20%	no	X	X	X
15,000	12	2011	70%	✓	YES	YES	YES
15,000	13	2012	50%	✓			YES
15,000	14	2013	35%	✓	YES	YES	YES
15,000	15	2014	0%	no	X	X	X
15,000	16	2015	20%	no	X	X	X
15,000	17	2016	45%	✓	YES	YES	YES
15,000	18	2017	60%	✓			YES
15,000	19	2018	20%	no	X	X	X
15,000	20	2019	70%	✓	YES	YES	YES
15,000	21	2020	15%	no	X	X	X
15,000	22	2021	5%	no	X	X	X
15,000	23	2022	5%	no	X	X	X
15,000	24	2023	75%	✓	YES	YES	YES
15,000	25	2024	30%	✓	YES	YES	YES

- 375,000 AF total, guaranteed (climate independent)
- Water is available every year to support pulse flow. *This is unique to the pulse flows offered by the Chino Basin Program*

*CDFW would have requested release of 8 to 17 pulse flows and received 100% of ecosystem flows over 25 years.*



# State Public Benefit Contracts



## California Department of Fish & Wildlife

- 375,000 acre-feet pulse flow, 25-year term
- 15,000 acre-feet offered each year (max 50,000 per pulse), not based on hydrology
- Pulse flows can occur when spring SWP allocation over 30%



## State Water Resources Control Board

- Treat and store 15,000 acre-feet per year purified water in Chino Basin aquifer



## Department of Water Resources

- 50,000 acre-feet emergency water supply for local use



**NO CHANGE TO QUANTITY OR MAGNITUDE OF WSIP PUBLIC BENEFITS**



# Chino Basin Program Facilities Overview

Facility	2026 Cost (\$ M)	Benefits
Advanced Water Purification Facility (15 MGD)	\$232 M	<ul style="list-style-type: none"><li>• Advance treat recycled water for storage in groundwater basin</li><li>• Remove salts, constituents of emerging concern (CEC's)</li></ul>
Recycled Water Pipeline	\$125 M	<ul style="list-style-type: none"><li>• Direct recycled water to provide steady flow for Advanced Water Purification Facility</li></ul>
Pure Water Recharge Facilities (aquifer replenishing wells, conveyance, GWR facilities)	\$181 M	<ul style="list-style-type: none"><li>• Store purified water in Chino Basin aquifer for future use.</li><li>• 15,000 AF of water to be stored each year</li></ul>
Extraction Facilities (wells, conveyance)	\$337 M	<ul style="list-style-type: none"><li>• New wells to pump stored purified water from aquifer</li><li>• 40,000 AF production capacity</li></ul>
MWD Interconnection	\$133 M	<ul style="list-style-type: none"><li>• Pump-in connection to move 10,000 AF pumped groundwater to Metropolitan</li></ul>
<b>Total</b>	<b>\$1,008 M</b>	



# Chino Basin Program Facilities Overview



Facility	2026 Cost (\$ M)	Benefits
Advanced Water Purification Facility (15 MGD)	\$232 M	<ul style="list-style-type: none"><li>• Advance treat recycled water for storage in groundwater basin</li><li>• Remove salts, constituents of emerging concern (CEC's)</li></ul>
Recycled Water Pipeline	\$125 M	<ul style="list-style-type: none"><li>• Direct recycled water to provide steady flow for Advanced Water Purification Facility</li></ul>
Pure Water Recharge Facilities (aquifer replenishing wells, conveyance, GWR facilities)	\$181 M	<ul style="list-style-type: none"><li>• Store purified water in Chino Basin aquifer for future use.</li><li>• 15,000 AF of water to be stored each year</li></ul>
Extraction Facilities (wells, conveyance)	\$337 M	<ul style="list-style-type: none"><li>• New wells to pump stored recycled water from aquifer</li><li>• 40,000 AF production capacity</li></ul>
MWD Interconnection	\$133 M	<ul style="list-style-type: none"><li>• Pump-in connection to move 10,000 AF pumped groundwater to Metropolitan</li></ul>
<b>Total</b>	<b>\$1,008 M</b>	



# Chino Basin Program Facilities Overview

Facility	2026 Cost (\$ M)	Benefits
Advanced Water Purification Facility (15 MGD)	\$232 M	<ul style="list-style-type: none"><li>• Advance treat recycled water for storage in groundwater basin</li><li>• Remove salts, constituents of emerging concern (CEC's)</li></ul>
Recycled Water Pipeline	\$125 M	<ul style="list-style-type: none"><li>• Direct recycled water to provide steady flow for Advanced Water Purification Facility</li></ul>
Pure Water Recharge Facilities (aquifer replenishing wells, conveyance, GWR facilities)	\$181 M	<ul style="list-style-type: none"><li>• Store purified water in Chino Basin aquifer for future use.</li><li>• 15,000 AF of water to be stored each year</li></ul>
Extraction Facilities (wells, conveyance)	\$337 M	<ul style="list-style-type: none"><li>• New wells to pump stored recycled water from aquifer</li><li>• 40,000 AF production capacity</li></ul>
MWD Interconnection	\$133 M	<ul style="list-style-type: none"><li>• Pump-in connection to move 10,000 AF pumped groundwater to Metropolitan</li></ul>
<b>Total</b>	<b>\$1,008 M</b>	





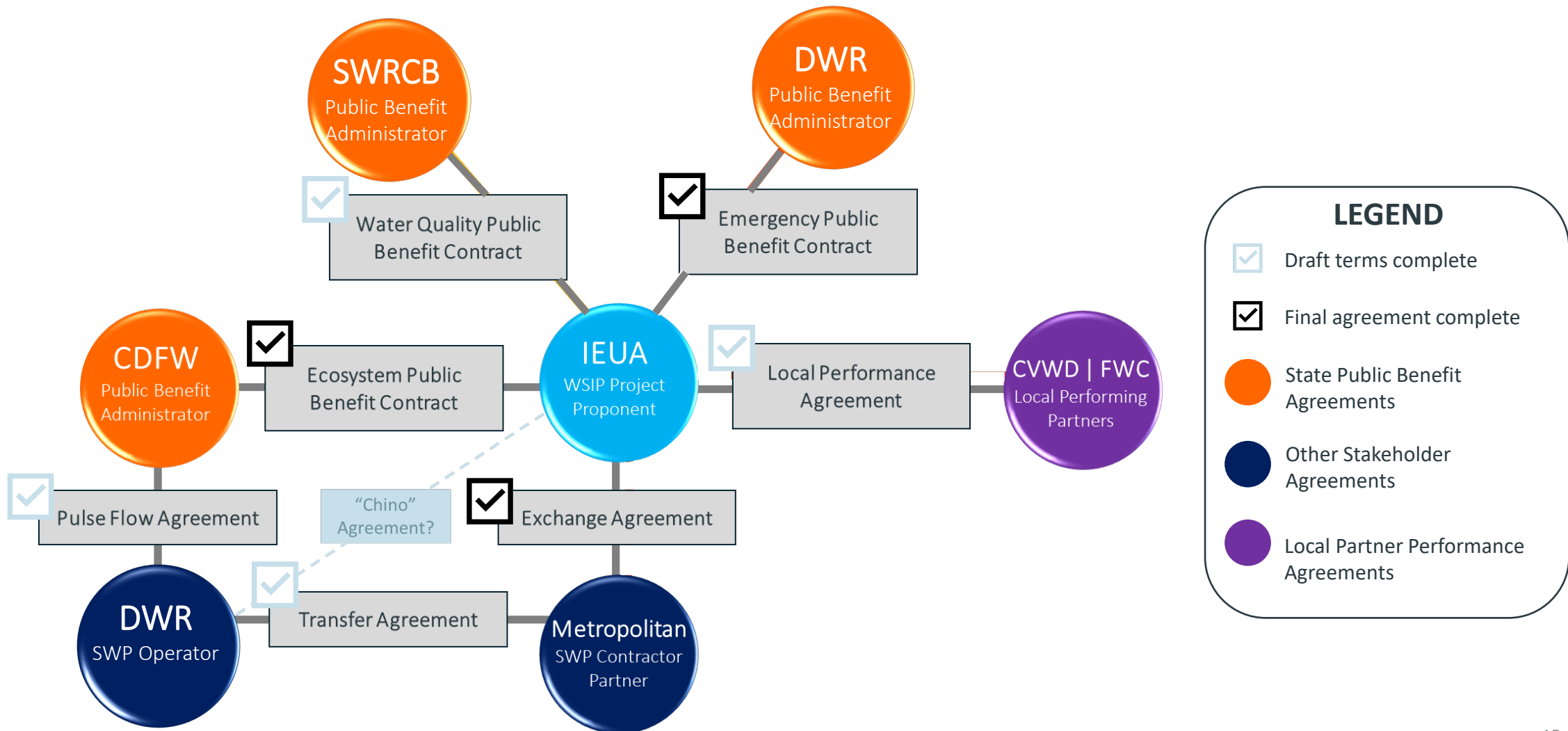
# Chino Basin Program Facilities Overview



Facility	2026 Cost (\$ M)	Benefits
Advanced Water Purification Facility (15 MGD)	\$232 M	<ul style="list-style-type: none"><li>• Advance treat recycled water for storage in groundwater basin</li><li>• Remove salts, constituents of emerging concern (CEC's)</li></ul>
Recycled Water Pipeline	\$125 M	<ul style="list-style-type: none"><li>• Direct recycled water to provide steady flow for Advanced Water Purification Facility</li></ul>
Pure Water Recharge Facilities (aquifer replenishing wells, conveyance, GWR facilities)	\$181 M	<ul style="list-style-type: none"><li>• Store purified water in Chino Basin aquifer for future use.</li><li>• 15,000 AF of water to be stored each year</li></ul>
Extraction Facilities (wells, conveyance)	\$337 M	<ul style="list-style-type: none"><li>• New wells to pump stored recycled water from aquifer</li><li>• 40,000 AF production capacity</li></ul>
MWD Interconnection	\$133 M	<ul style="list-style-type: none"><li>• Pump-in connection to move 10,000 AF pumped groundwater to Metropolitan</li></ul>
<b>Total</b>	<b>\$1,008 M</b>	



# Interconnectivity of State Public Benefit Contracts and Agreements





# Environmental Permitting Status



*Chino Creek Wetlands and Educational Park*

- Chino Basin Program EIR Recertification pending (July 2026)
- DWR Pulse Flow SEIR adoption pending (July 2026)
- 1211 IEUA Wastewater Diversion Petition (filed May 2026)
- 1211 Rialto Wastewater Diversion Petition (filed May 2026)



# Program Progress

## Take Facilities PDR Work:

- ✓ Metropolitan interconnection complete
- ✓ South-North Pipeline PDR complete
  - Discussions with Metropolitan on alternative connection to Upper Feeder for \$134M cost-savings (intend to do supplemental TM summer 2026)
- ✓ Extraction well facilities draft PDR under review

## Construction of AWPf Demonstration Facility underway!

- On schedule to complete construction December 2026, with operations starting Feb 2027 followed by ribbon cutting ceremony.



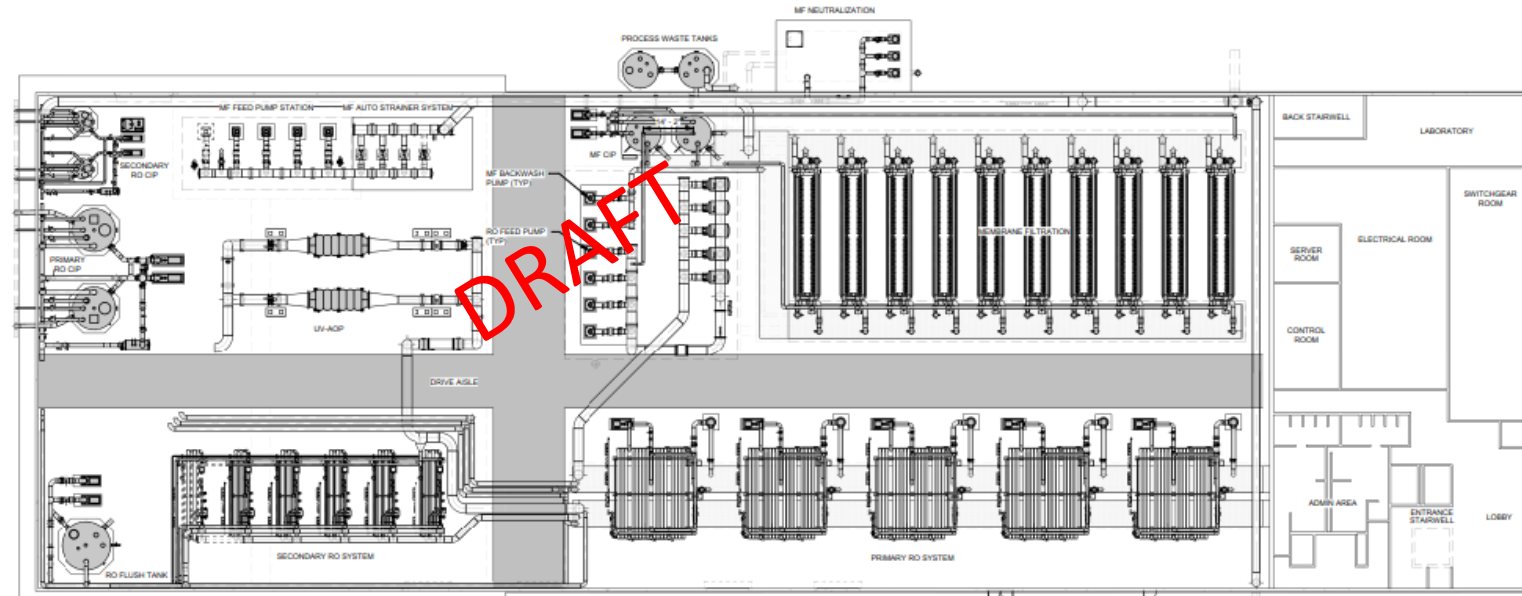
*Demonstration Facility – Rendering*



# Advanced Water Purification Facility

*Purify recycled water for storage in groundwater basin*

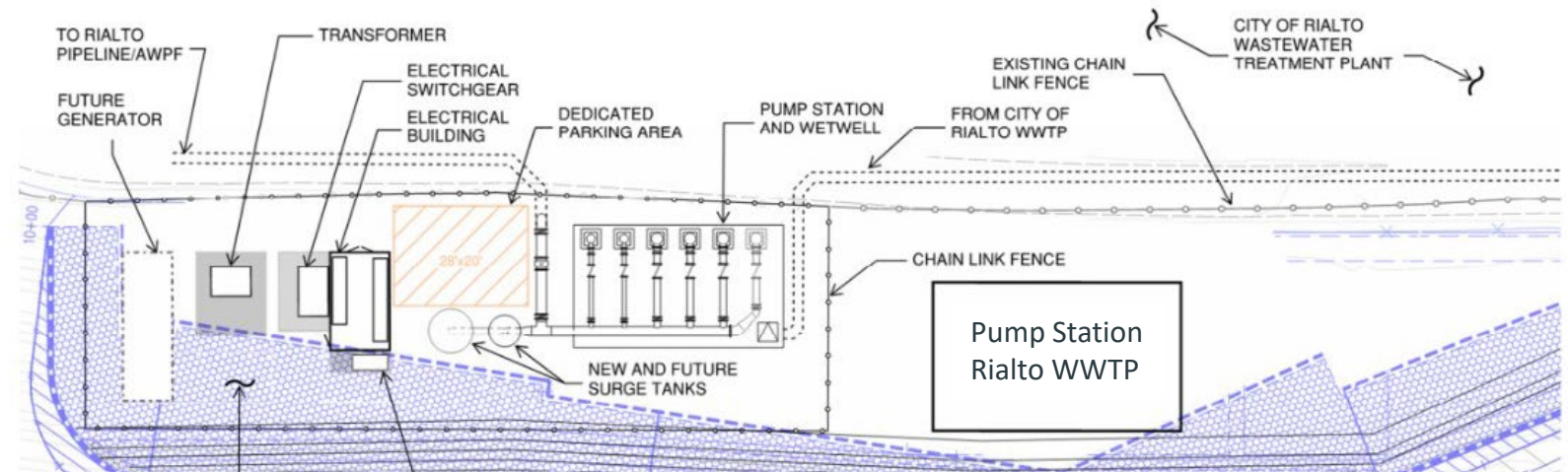
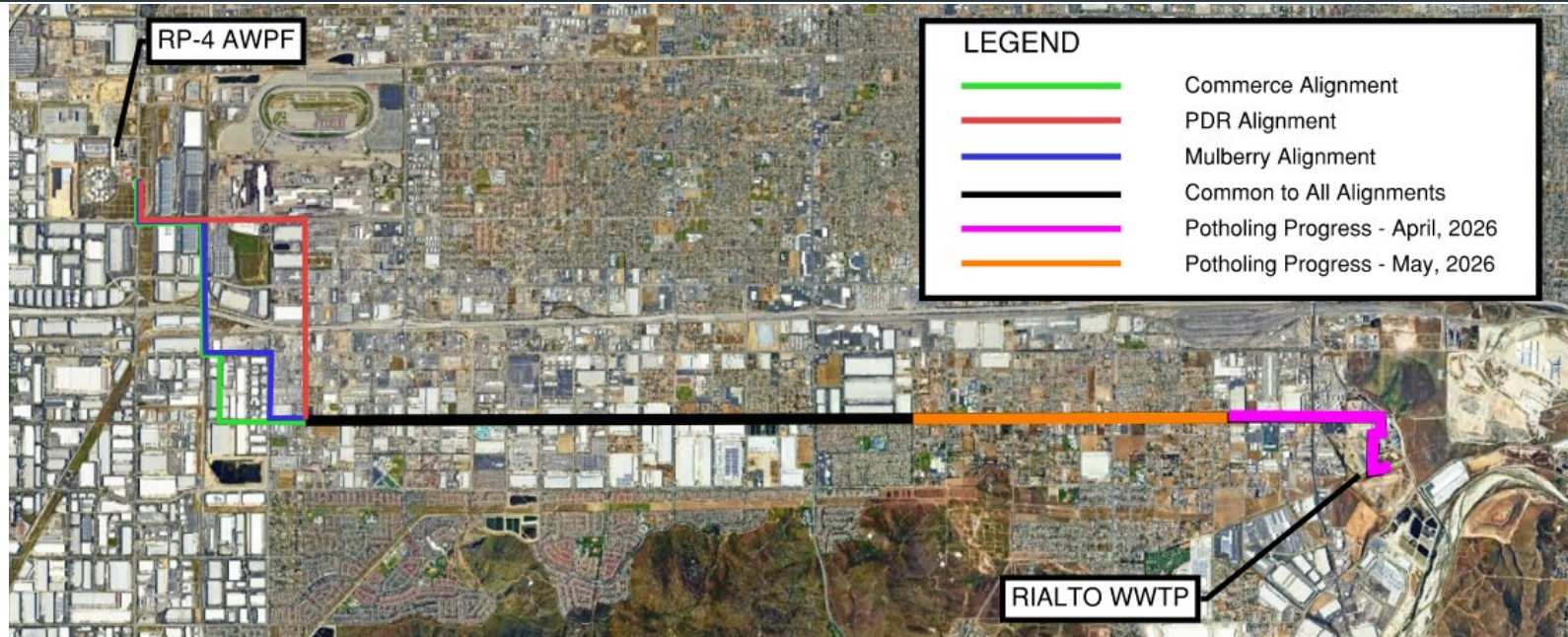
- Technical, Design, Project Workshops completed:
- Received 21 submittals, 17 RFIs
- Completed early field investigations
- Basis of Design Report expected on May 18, 2026
- Progressive-Design Build Team: JF Shea-Tetra Tech





# Rialto Alignment – Field Activity Progress

- Survey, potholing and geotechnical investigation underway
- Completed engineering for connection to Rialto Wastewater Treatment Plant (WWTP) and pipeline material selected
- Progressive Design Build Team: Steve P. Rados-Stantec

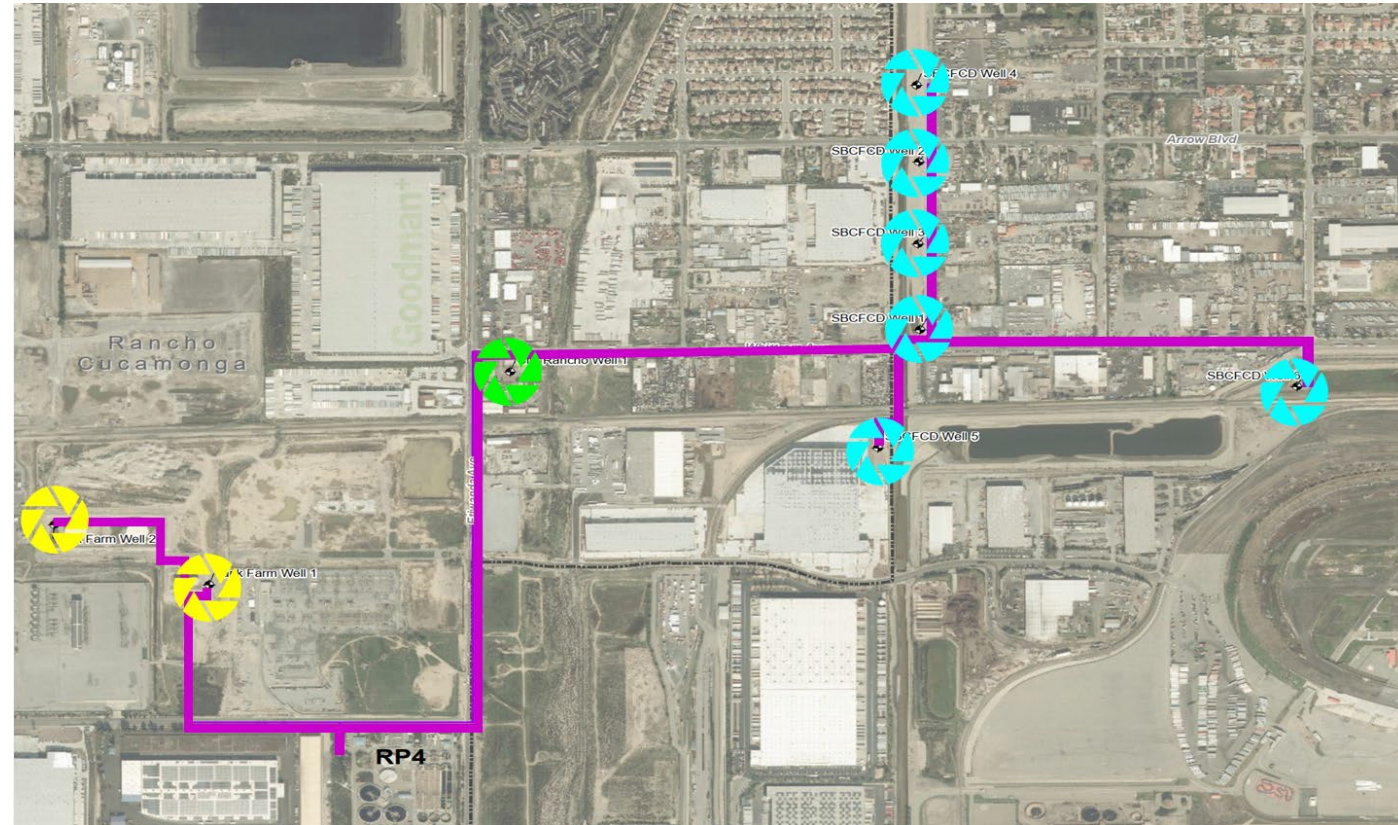




# Replenishment Well Siting/Design

## *Wells to Store Purified Water*


- Based on test well, total reduced from 16 to 9 wells!
- Location negotiations underway for identified well sites
- Nesting monitoring well design complete
- Prequalification of drillers initiated April 2026



### LEGEND

 Purified Water Pipeline

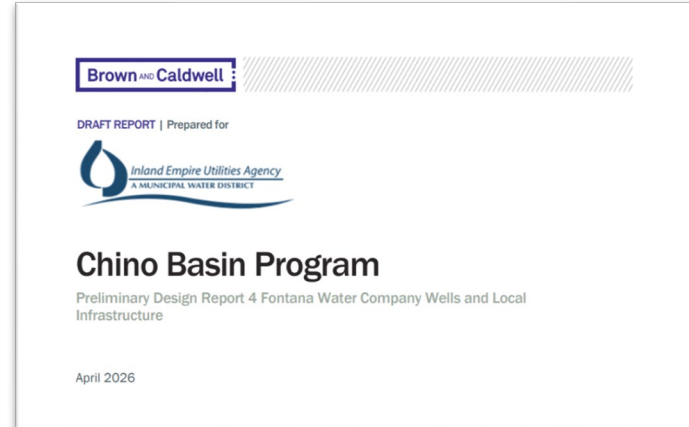
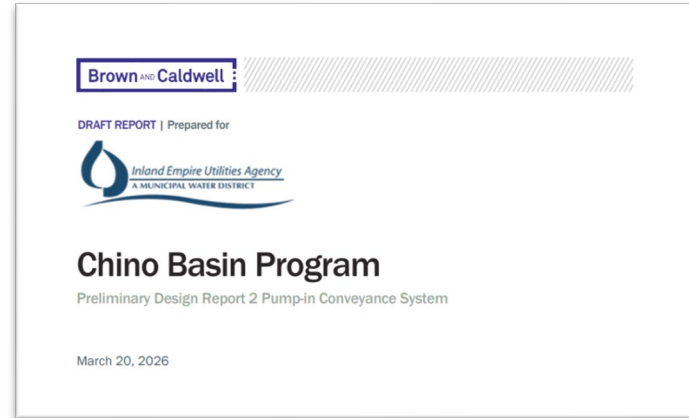
 Potential Well Site on San Bernardino County Flood Control property

 Potential Well Site on City of Rancho Cucamonga property

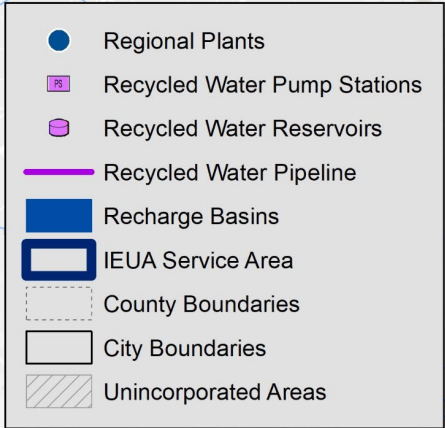
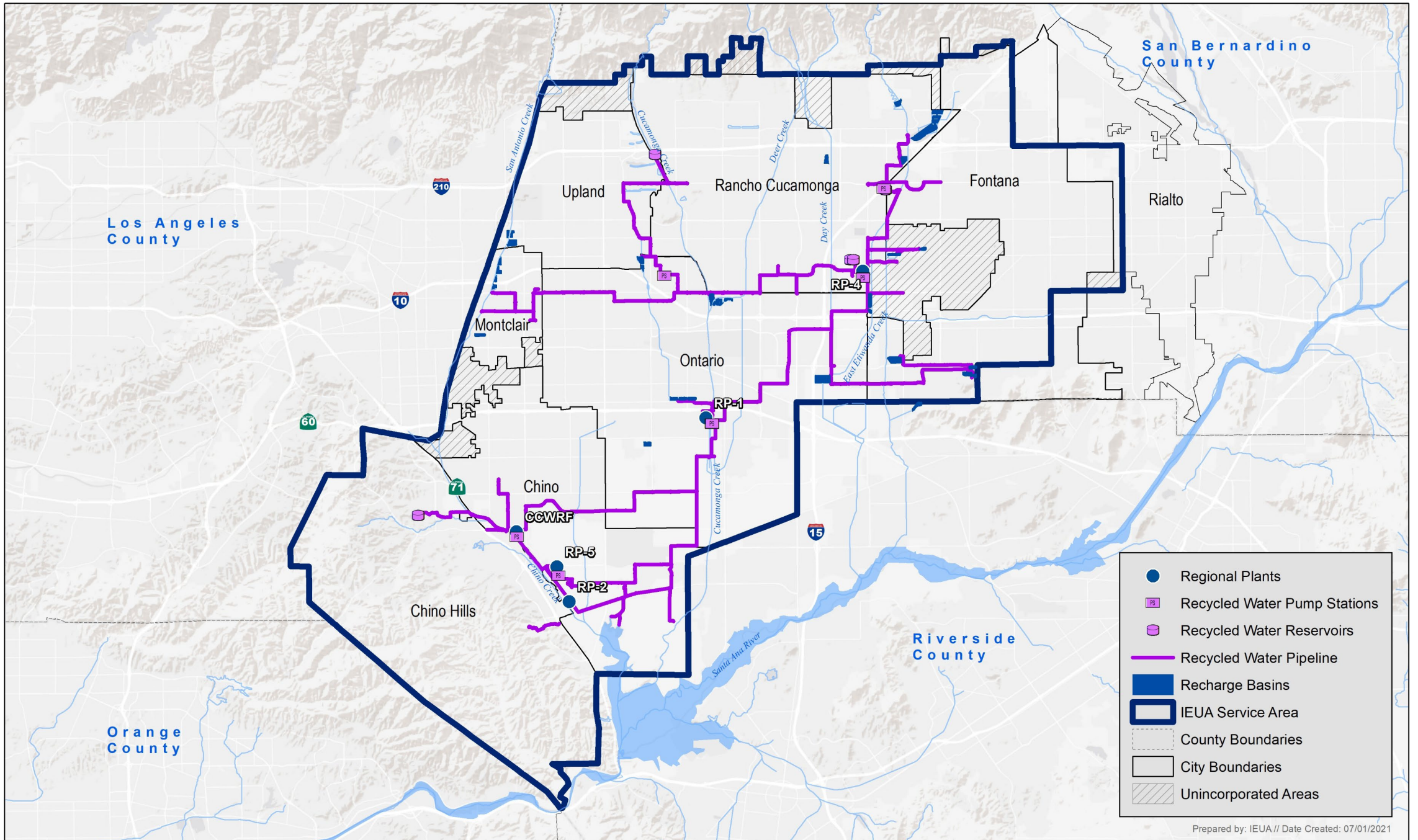
 IEUA Potential Well Site

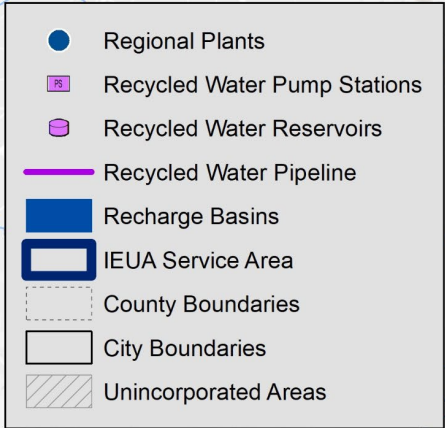
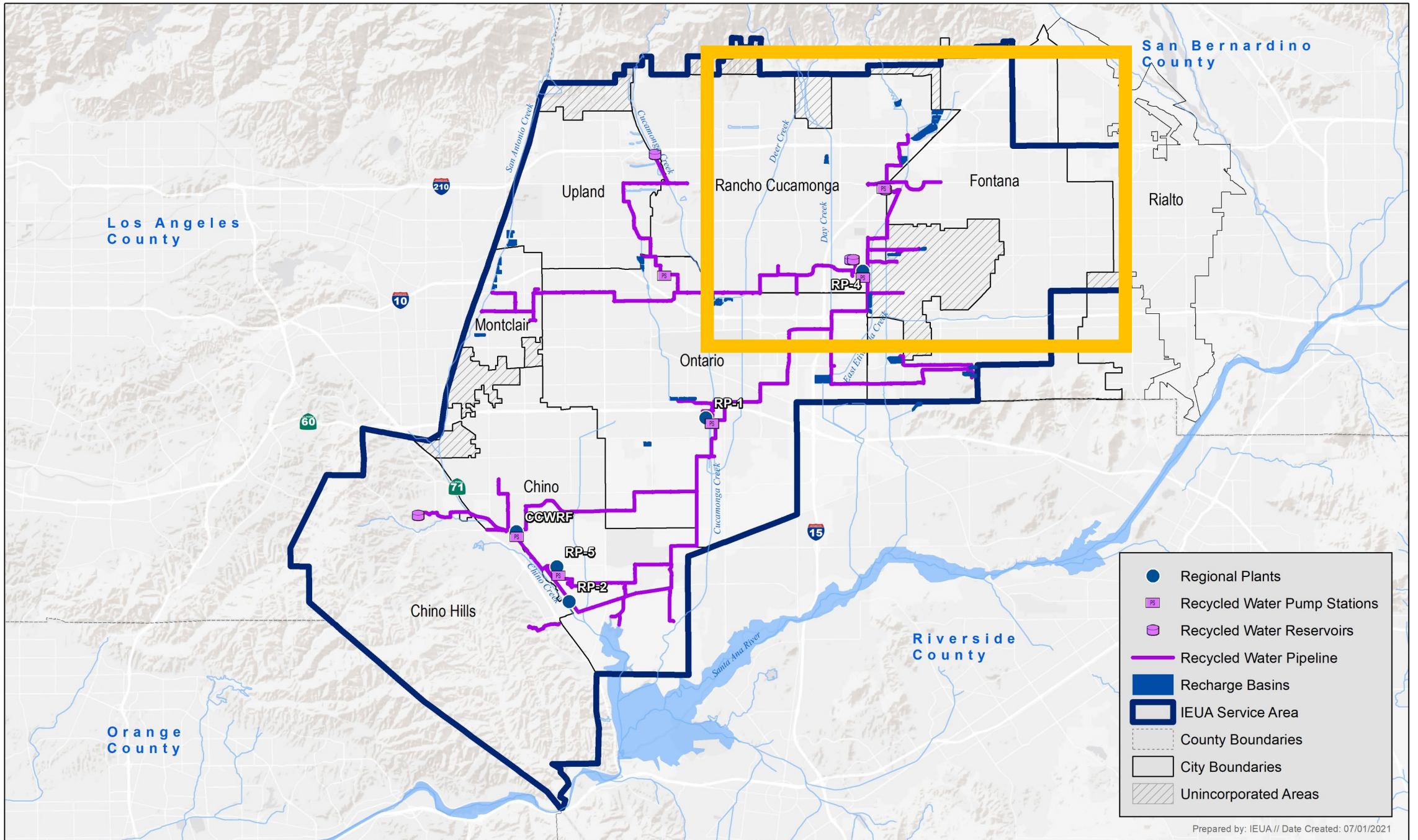


# TAKE Preliminary Design Reports



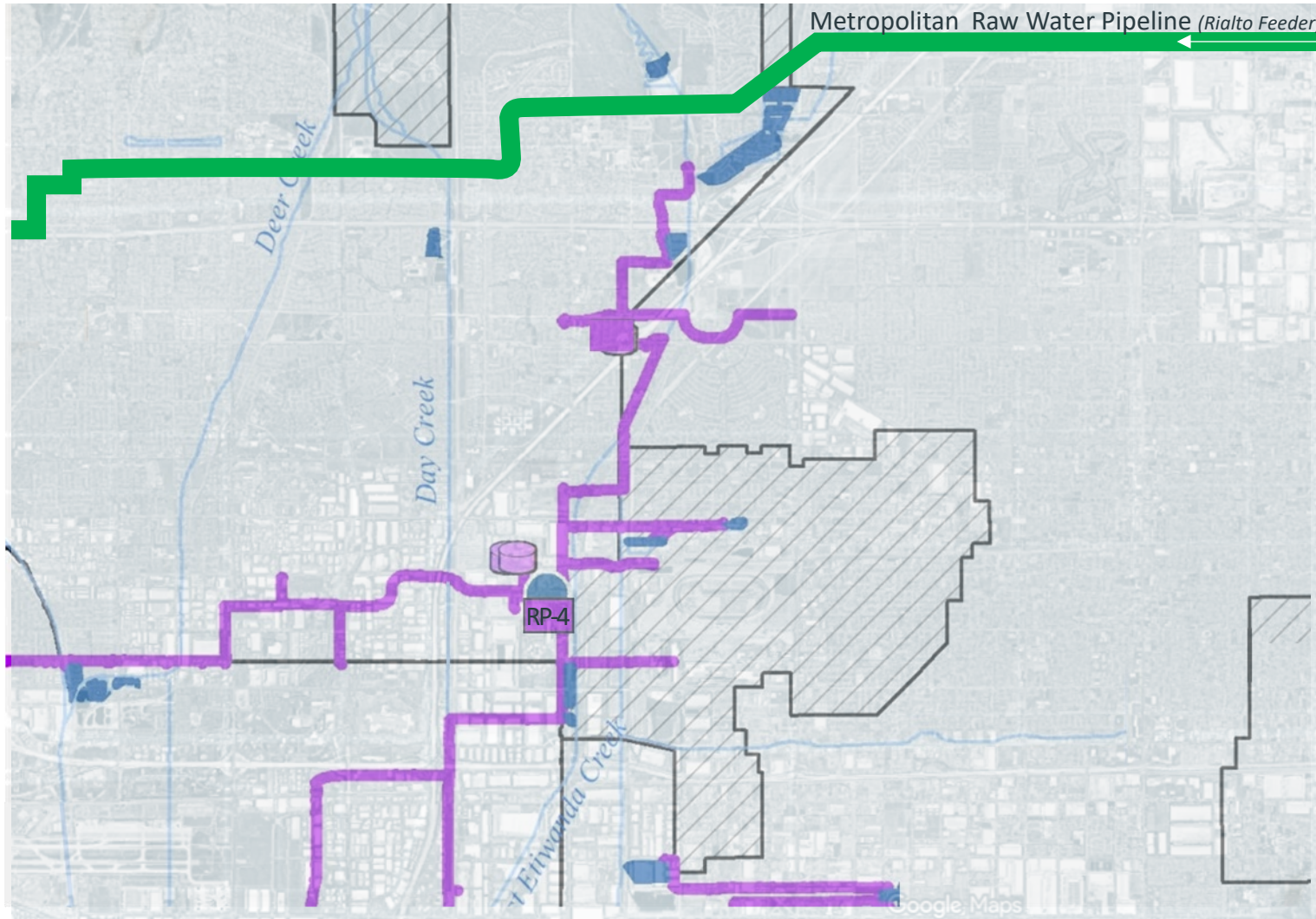
- ✓ Four draft preliminary design reports for the TAKE infrastructure are under review:
  - MWD Pump-in Infrastructure
  - Pump-in Conveyance
  - Cucamonga Valley Water District In-Lieu Local Improvements
  - Fontana Valley Water District In-Lieu Local Improvements
- ✓ Updated cost estimates
- Final preliminary design reports by summer 2026







# Existing Infrastructure

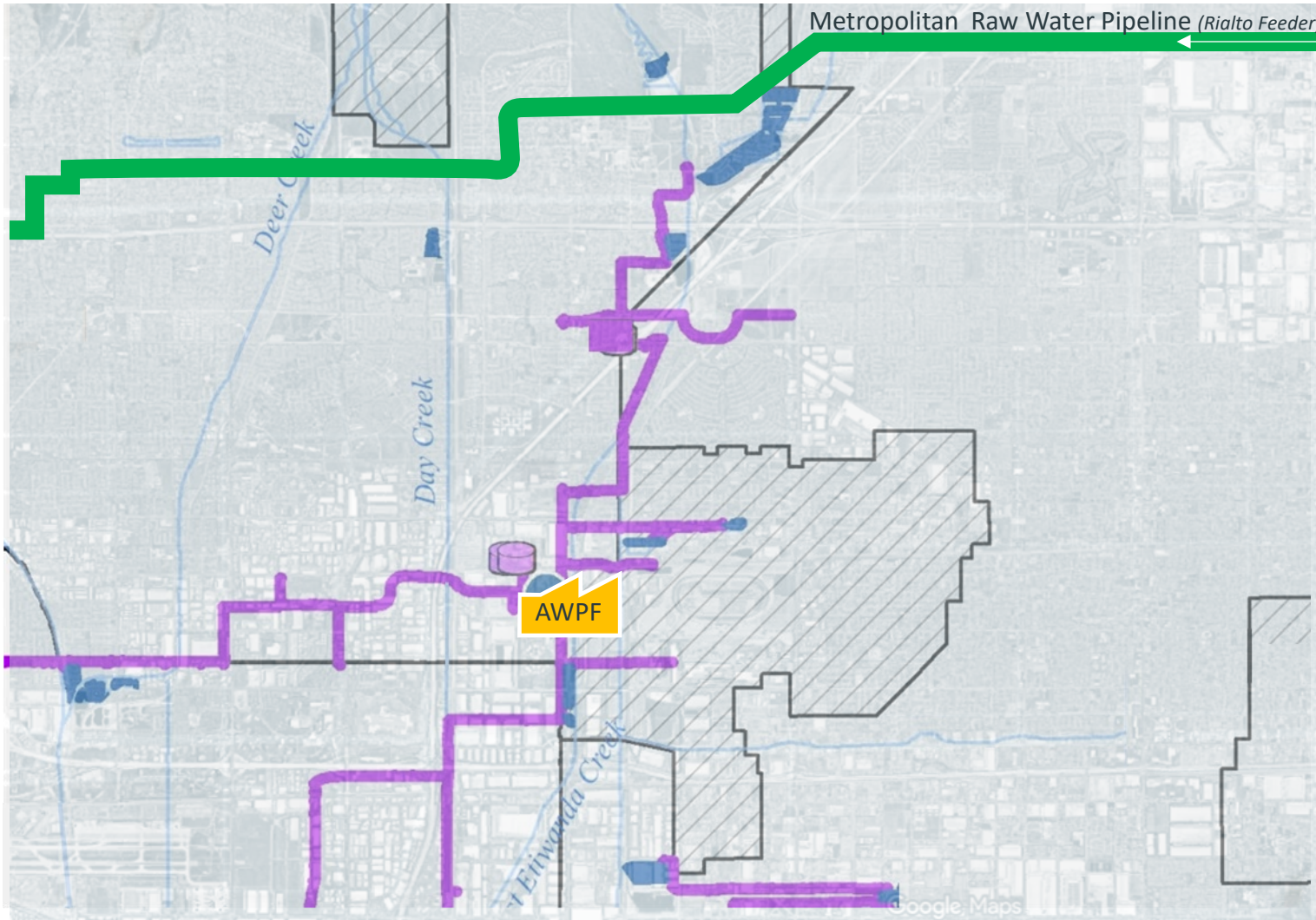


## LEGEND

- Metropolitan State Water Project Pipeline (Rialto Feeder)
- IEUA Recycled water pipelines
- Existing active recharge basins for flood, stormwater/recycled water capture
- NEW Supplemental Recycled water pipeline (Rialto)
- Pure Water pipeline and aquifer replenishing wells
- Existing potable water pipeline
- Existing reservoir
- Existing pump station
- Existing groundwater well
- NEW pumped water pipeline
- NEW reservoir
- NEW pump station
- NEW groundwater well



# New 15 MGD Advanced Water Purification Facility

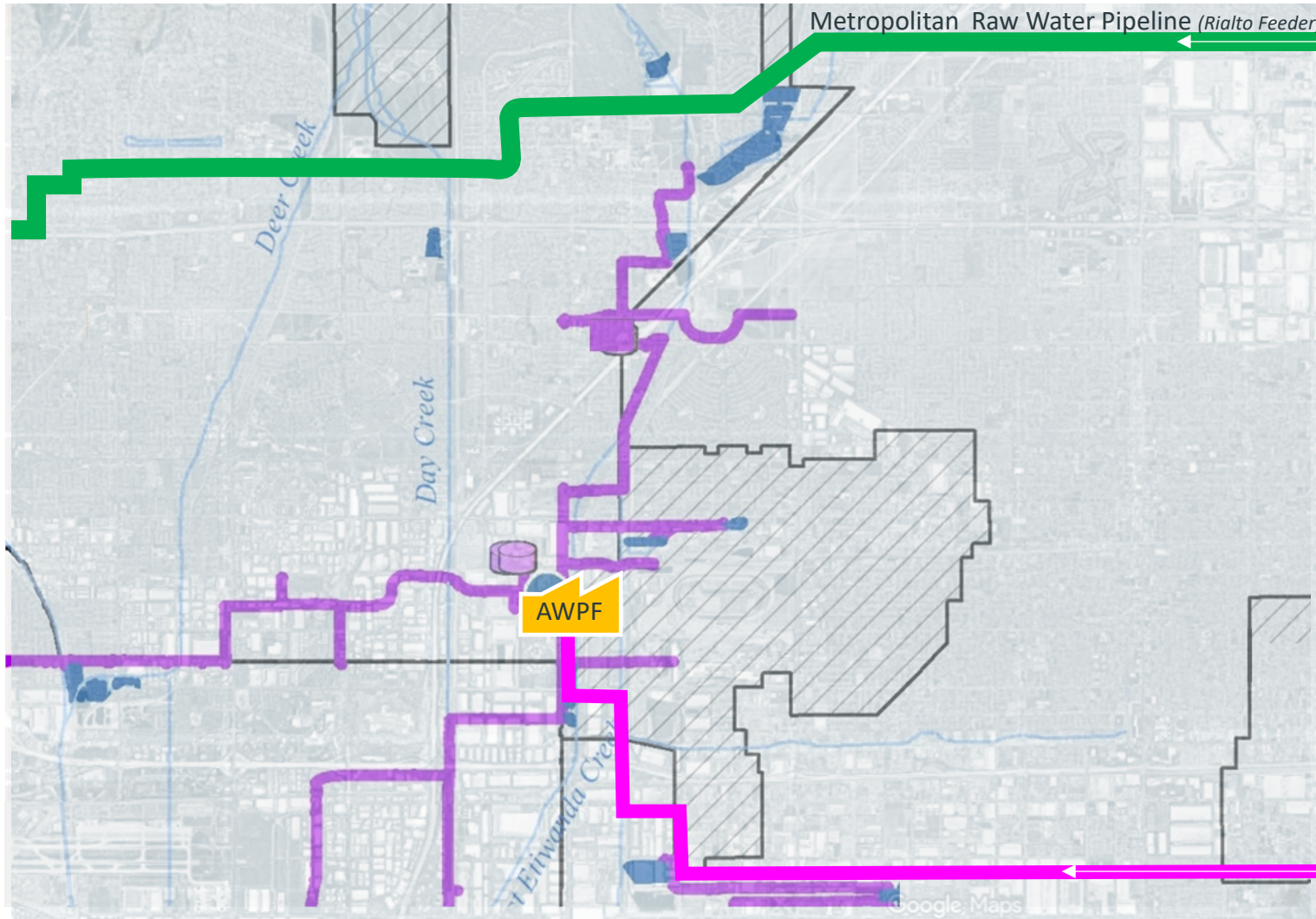


## LEGEND

- Metropolitan State Water Project Pipeline (Rialto Feeder)
- IEUA Recycled water pipelines
- Existing active recharge basins for flood, stormwater/recycled water capture
- NEW Supplemental Recycled water pipeline (Rialto)
- Pure Water pipeline and aquifer replenishing wells
- Existing potable water pipeline
- Existing reservoir
- Existing pump station
- Existing groundwater well
- NEW pumped water pipeline
- NEW reservoir
- NEW pump station
- NEW groundwater well



# Supplemental Recycled Water from City of Rialto

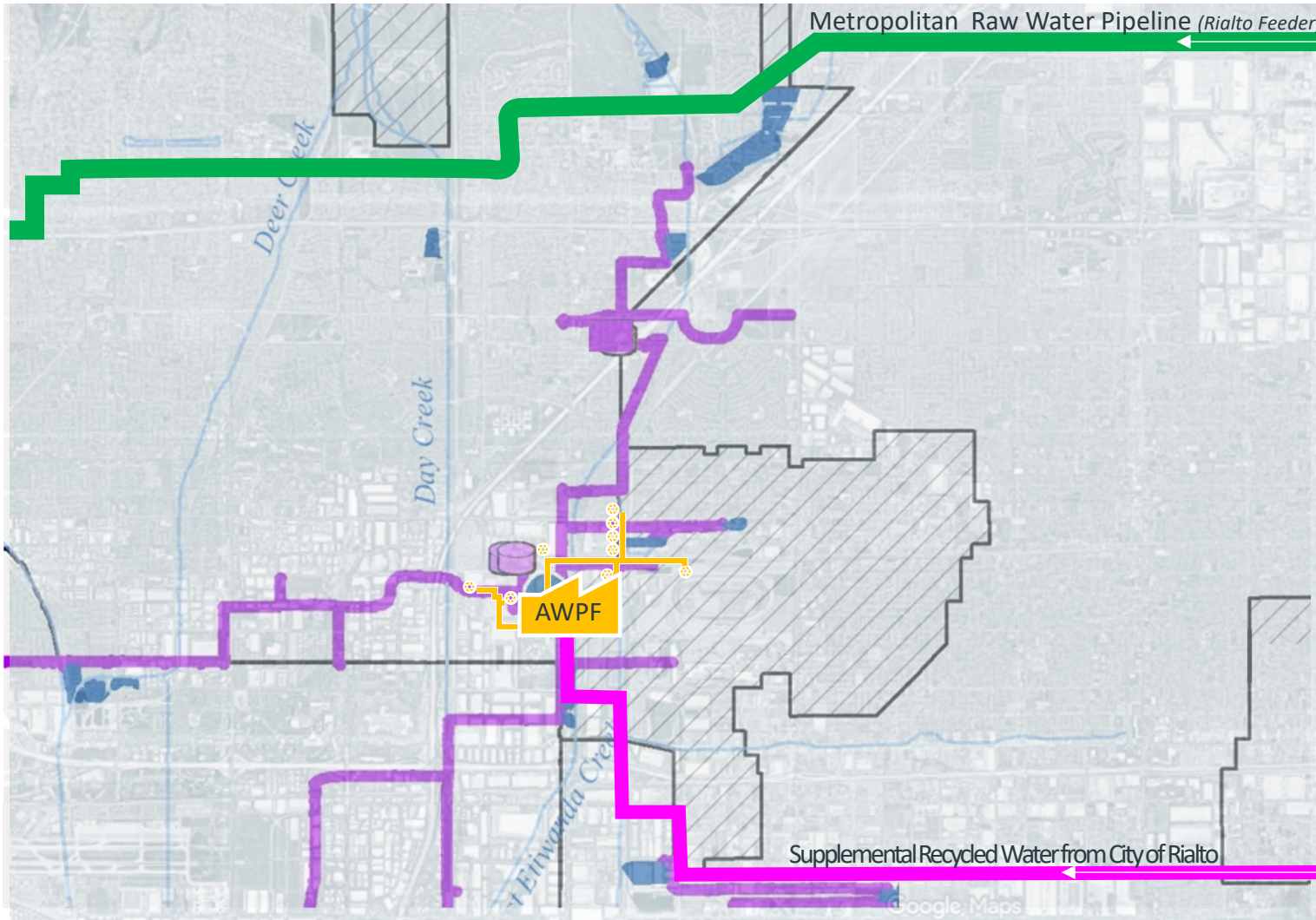


## LEGEND

- Metropolitan State Water Project Pipeline (Rialto Feeder)
- IEUA Recycled water pipelines
- Existing active recharge basins for flood, stormwater/recycled water capture
- NEW Supplemental Recycled water pipeline (Rialto)
- Pure Water pipeline and aquifer replenishing wells
- Existing potable water pipeline
- Existing reservoir
- Existing pump station
- Existing groundwater well
- NEW pumped water pipeline
- NEW reservoir
- NEW pump station
- NEW groundwater well



# Pure Water Pipeline and Replenishing Wells

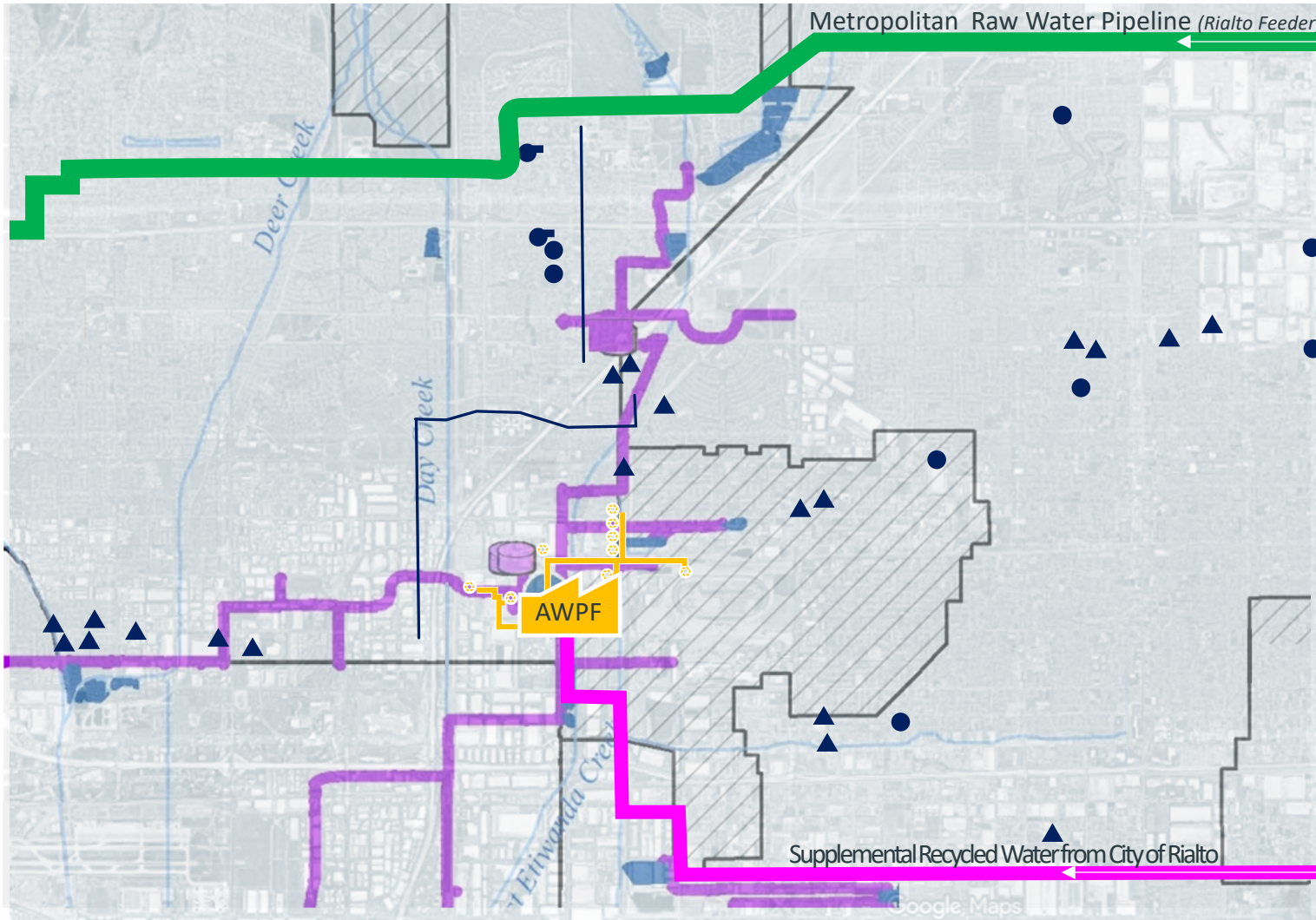


## LEGEND

- Metropolitan State Water Project Pipeline (Rialto Feeder)
- IEUA Recycled water pipelines
- Existing active recharge basins for flood, stormwater/recycled water capture
- NEW Supplemental Recycled water pipeline (Rialto)
- Pure Water pipeline and aquifer replenishing wells
- Existing potable water pipeline
- Existing reservoir
- Existing pump station
- Existing groundwater well
- NEW pumped water pipeline
- NEW reservoir
- NEW pump station
- NEW groundwater well



# Existing partner agency infrastructure (wells, pumpstations, pipelines)

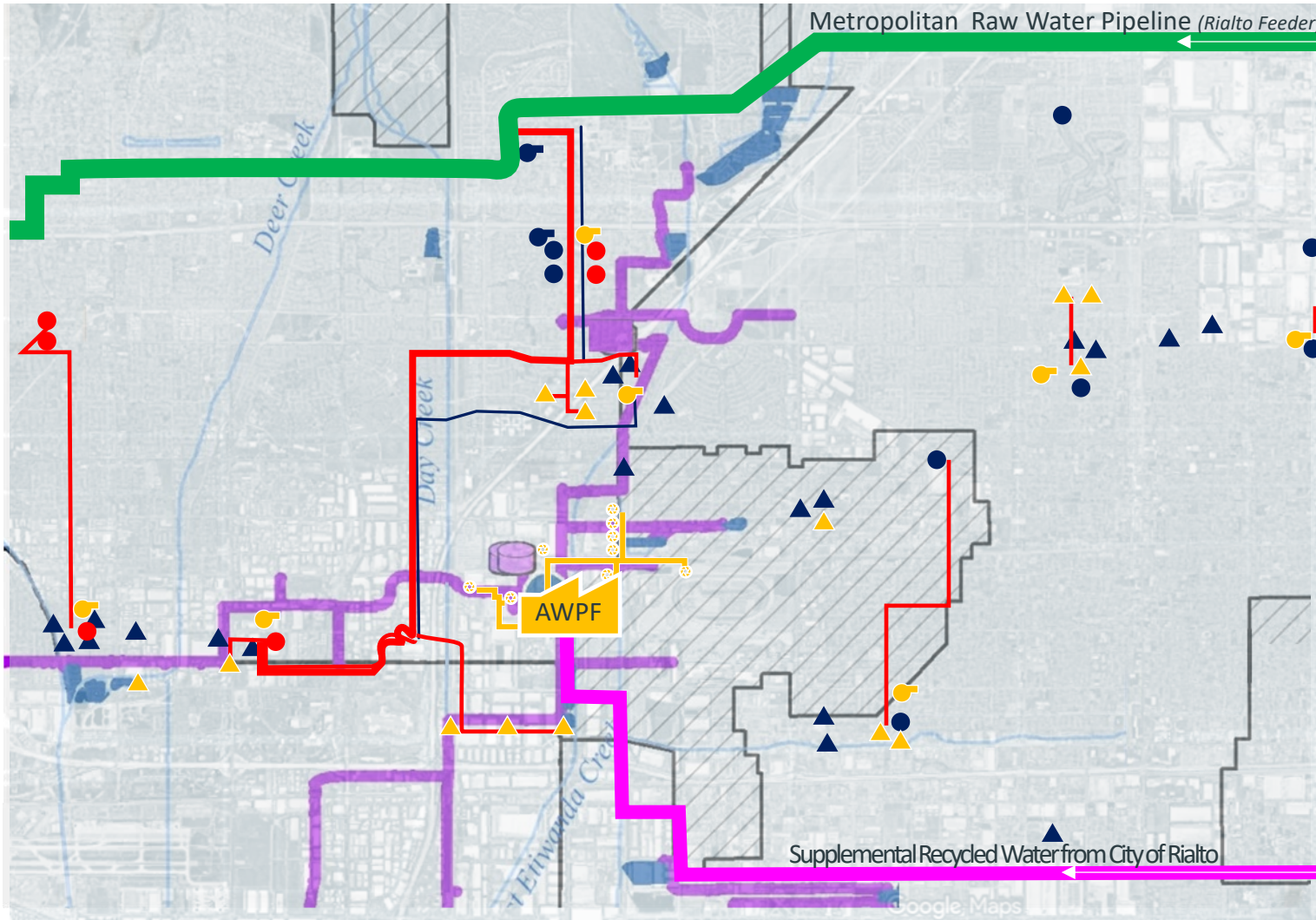


## LEGEND

- Metropolitan State Water Project Pipeline (Rialto Feeder)
- IEUA Recycled water pipelines
- Existing active recharge basins for flood, stormwater/recycled water capture
- NEW Supplemental Recycled water pipeline (Rialto)
- Pure Water pipeline and aquifer replenishing wells
- Existing potable water pipeline
- Existing reservoir
- Existing pump station
- Existing groundwater well
- NEW pumped water pipeline
- NEW reservoir
- NEW pump station
- NEW groundwater well



# New production well infrastructure and interconnection to Metropolitan



## LEGEND

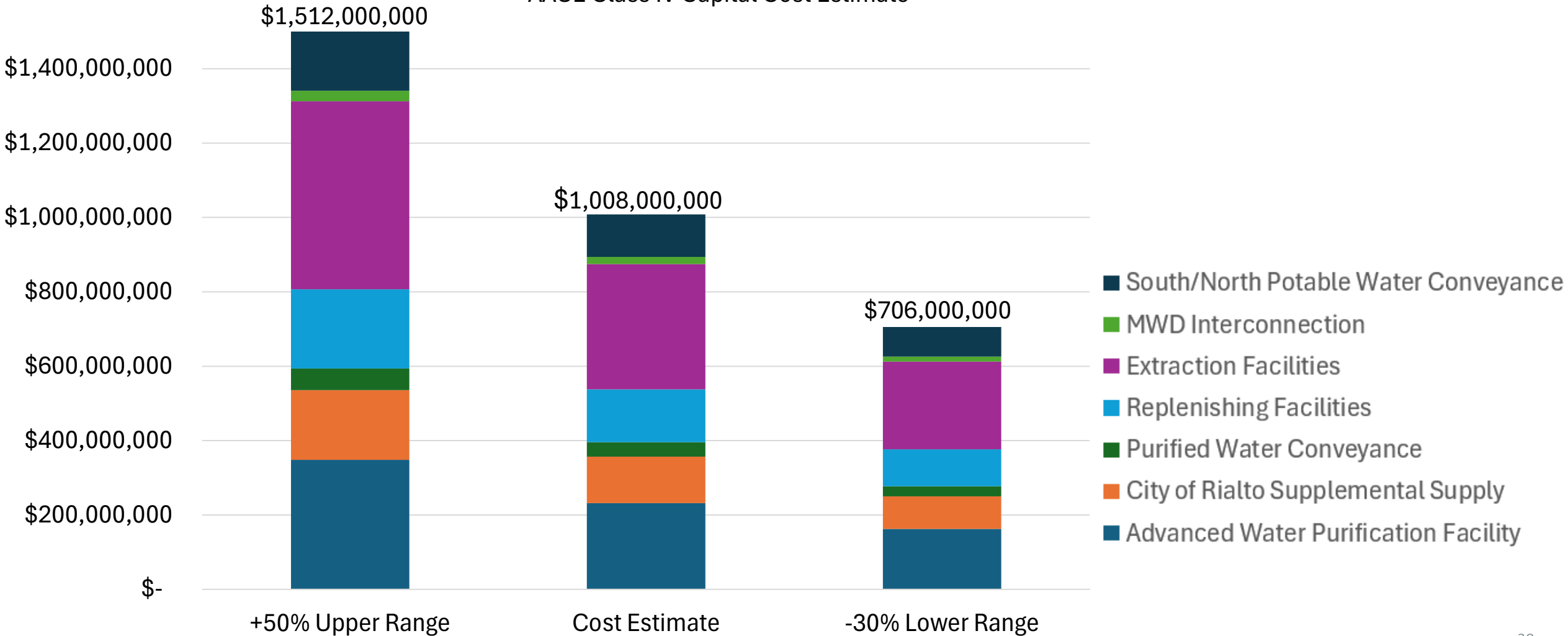
- Metropolitan State Water Project Pipeline (Rialto Feeder)
- IEUA Recycled water pipelines
- Existing active recharge basins for flood, stormwater/recycled water capture
- NEW Supplemental Recycled water pipeline (Rialto)
- Pure Water pipeline and aquifer replenishing wells
- Existing potable water pipeline
- Existing reservoir
- Existing pump station
- Existing groundwater well
- NEW pumped water pipeline
- NEW reservoir
- NEW pump station
- NEW groundwater well



# Chino Basin Program Capital Costs

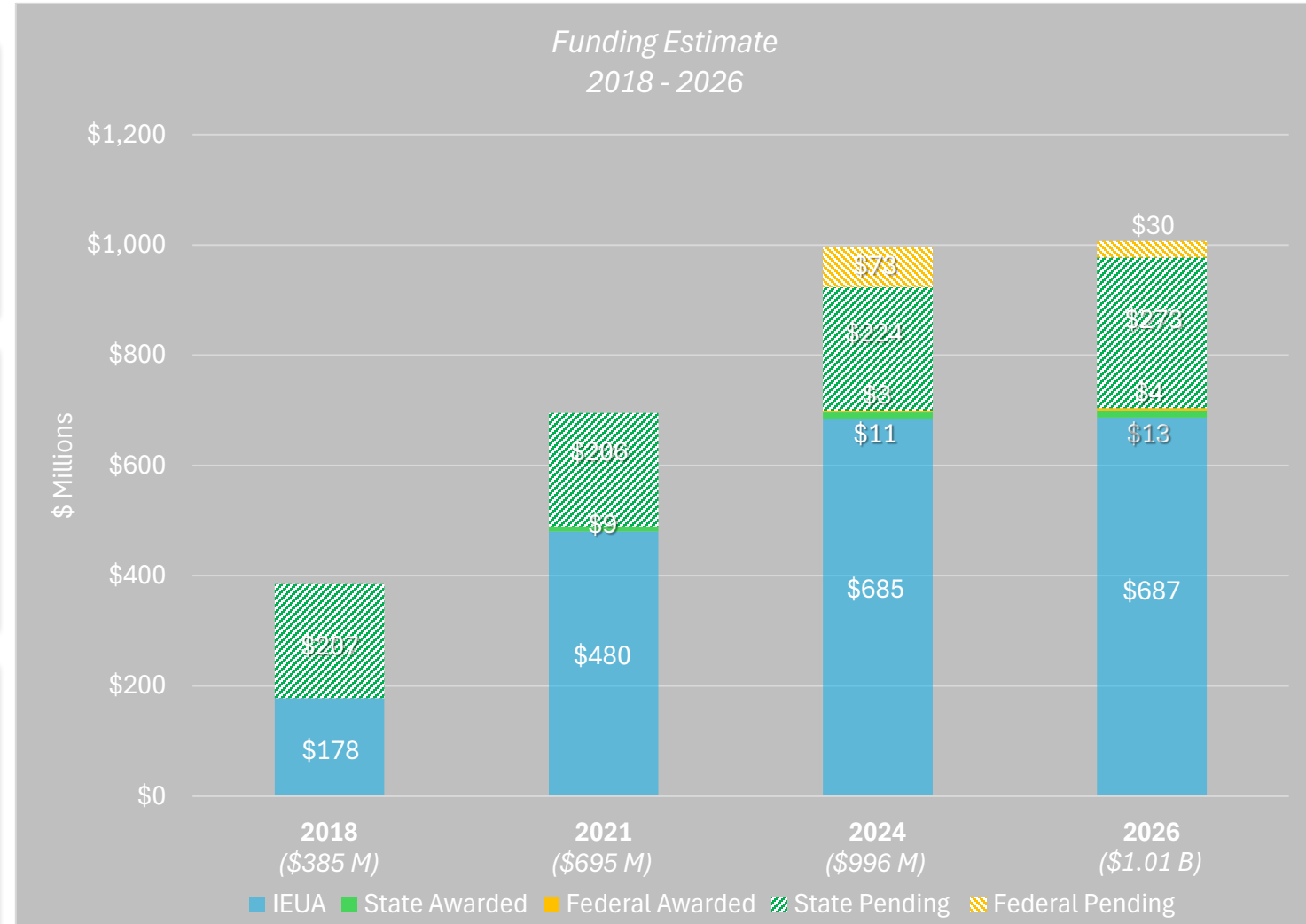
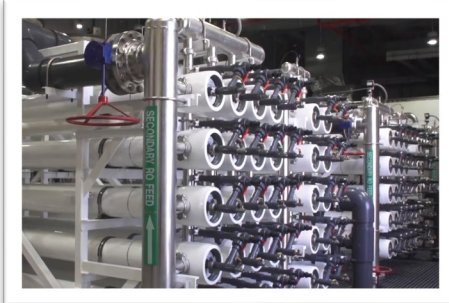
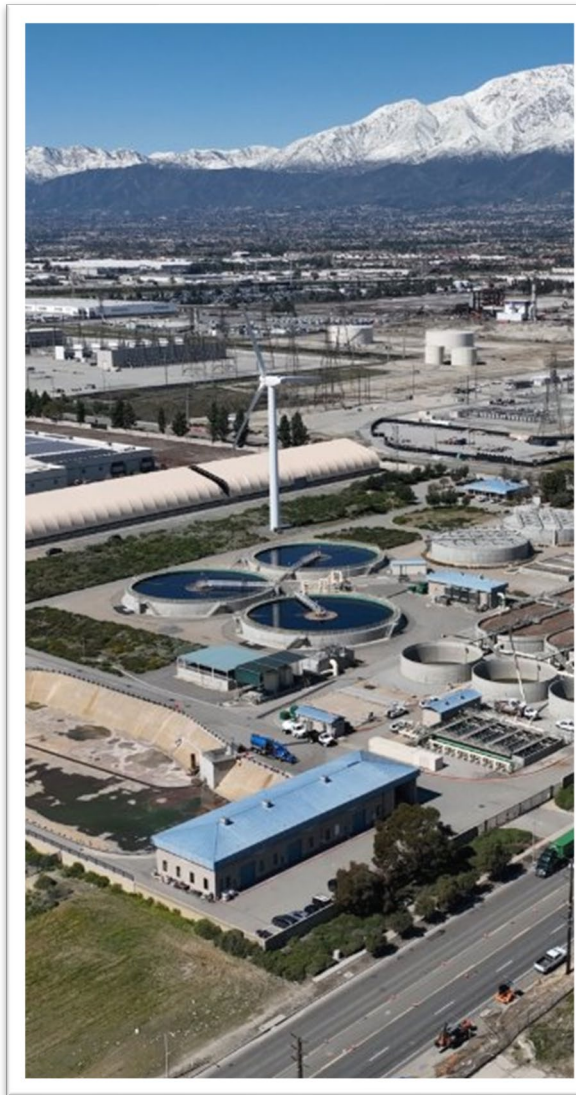
May 2026

AACE Class IV Capital Cost Estimate





# Chino Basin Program Funding





# Chino Basin Program Conditional Funding

CBP Public Benefit	Activity	Benefit Value	Conditional Award (2025)
Ecosystem Improvement	Coordinating pulse flow releases of 375,000 acre-feet over 25 years	\$ 215.8 M (\$575/AF)	\$ 134.6 M (\$358/AF)
Emergency Response	50,000 AF emergency supplies	\$ 38.7 M	\$ 21.5 M
Water Quality Improvement	Treat and store 15,000 acre-feet of purified recycled water in the Chino Basin	\$ 225.8 M	\$ 113.0 M

**\$ 430 M**      **\$ 269.1 M**  
 (eco benefit = 50% of funding)

- Funding was constrained due to lack of market data for long-term water leases
- The Chino Basin Program has \$129.5 M in unfunded public benefits
- IEUA has maintained ALL public benefits consistent with the original application
- Water currently awarded 40% less than the market rate.



# Existing Water Supply Market Rates

Supply/Exchange	Date	Value/AF	Notes
<b><i>North of Delta Market Rate</i></b>			
CNRA to Regional Water Authority	2023	\$611/AF	\$55 M for an 8-year pilot program to support 90,000 AF pulse flow releases, if available and not assured, for the Healthy Rivers and Landscapes' Voluntary Agreements
Richvale Irrigation District and Western Canal Water District	2025-2027	\$600-\$965/AF	North of Delta exchange on the Feather River
<b><i>Local Supply Rates</i></b>			
Metropolitan Water District	2025	\$912/AF (untreated) \$1,395/AF (treated)	Annual water rates for imported water purchases from Metropolitan
Chino Basin Groundwater	2024	\$677-\$820/AF	Stored water transactions per Chino Basin Watermaster FY 23/24 Assessment
Inland Empire Utilities Agency Recycled Water	2025	\$715/AF	Current rate for recycled water that has been recharged and stored in the Chino Basin



# CBP Construction and Implementation Milestones

- Complete Treatment and Storage Facilities PDR Work
  - AWPf (2023)
  - City of Rialto RW Interconnection (2024)
  - Replenishing Wells (2023)
  - Permitting and Regulatory Strategy (2023)
  - Updated cost estimates
- Complete CBP CEQA Certification (2022)
- Award Program Manager/Owner's Engineer Contract (2023)
- Exploratory Boreholes (2024)
- Execute Rialto RW Purchase Agreement (2024)
- Execute IEUA-MWD CBP Agreement (2024)
- Award Progressive Design Build Contract for AWPf and City of Rialto RW (summer 2025)
- Carriage/Efficiency Credit and SWP O&M resolution (spring 2026)
  - DWR | USBR | IEUA
- Staff Draft State Public Benefit Contracts for WSIP Funds (spring 2026)
  - ✓ ✓
  - CDFW | DWR | SWRCB
- Complete Extraction Facilities PDR Work (spring 2026)
- Wastewater Change of Use Permit submittal (spring 2026)
- CBP CEQA Re-Certification (July 2026)
- Final Local Performance Agreements (Dec 2026)
- Environmental finding of consistency (winter 2026/27)
- Final State Public Benefit Contracts (summer 2027)
- WSIP Final Funding Hearing (fall 2027)**
- Complete construction
  - Rialto RW Interconnection (2027-2031)
  - AWPf (2027-2031)
  - Replenishing Wells (2027-2030)
  - MWD interconnection (2028-2031)
  - Extraction Wells (2028-2031)
- Facilities start-up commissioning, operations begin (2031-2032)



# Thank You

Project Information:



[www.chinobasinprogram.org](http://www.chinobasinprogram.org)

**Kevin Alexander**

General Manager  
kalexander@ieua.org

**Elizabeth Hurst**

Chino Basin Program Manager  
ehurst@ieua.org