

SWP Planning and Operations WY 2026 to Date



California Water
Commission
May 20, 2026

Tracy Hinojosa, PE
SWP Water Management

Precipitation and Snowpack Conditions

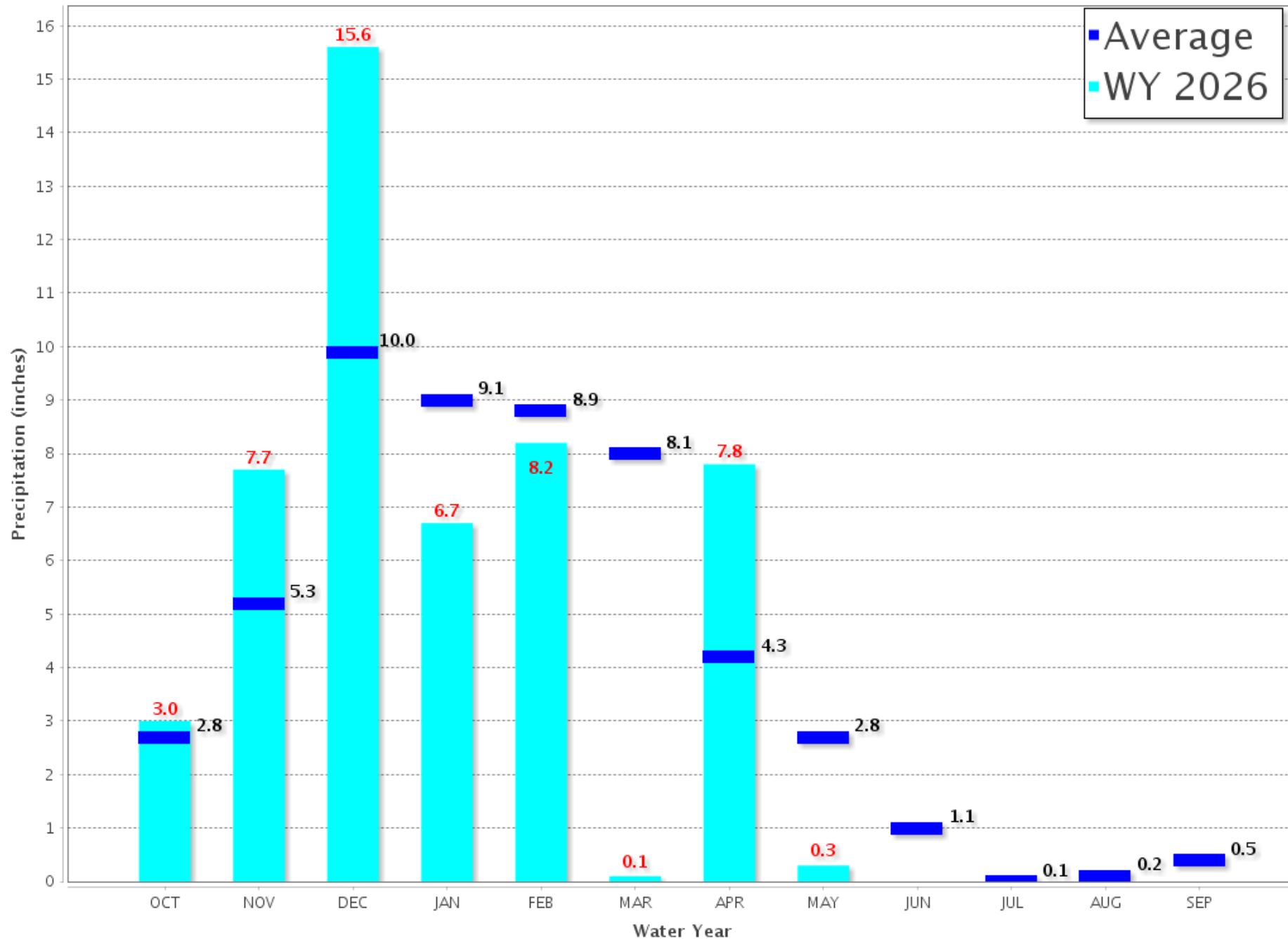


Northern Sierra 8-Station

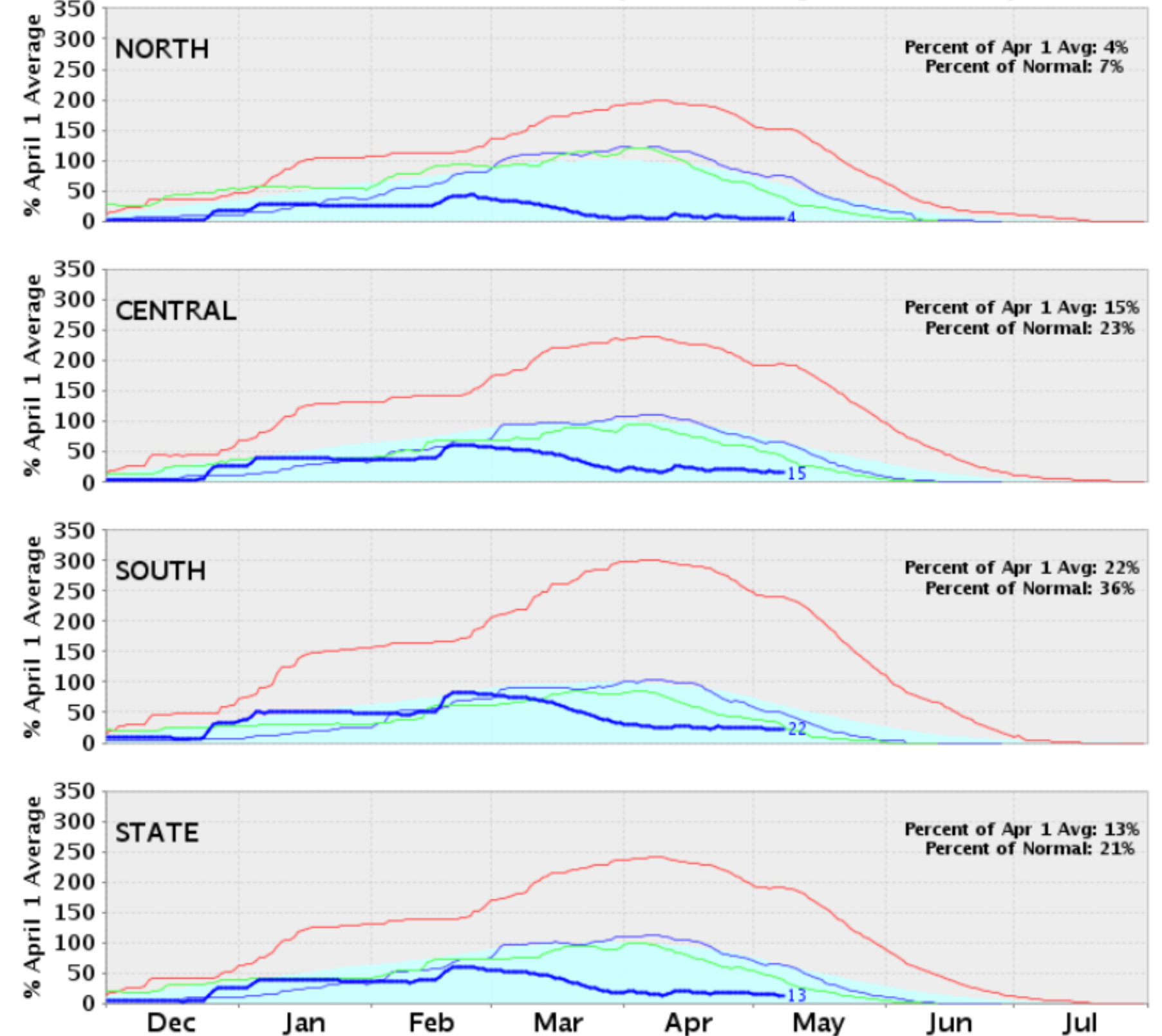
Precipitation Index for Water Year 2026 - Updated on May 8, 2026 03:48 PM

Note: Monthly totals may not add up to seasonal total because of rounding

Water Year Monthly totals are calculated based on Daily precipitation data from 12am to 12am PST



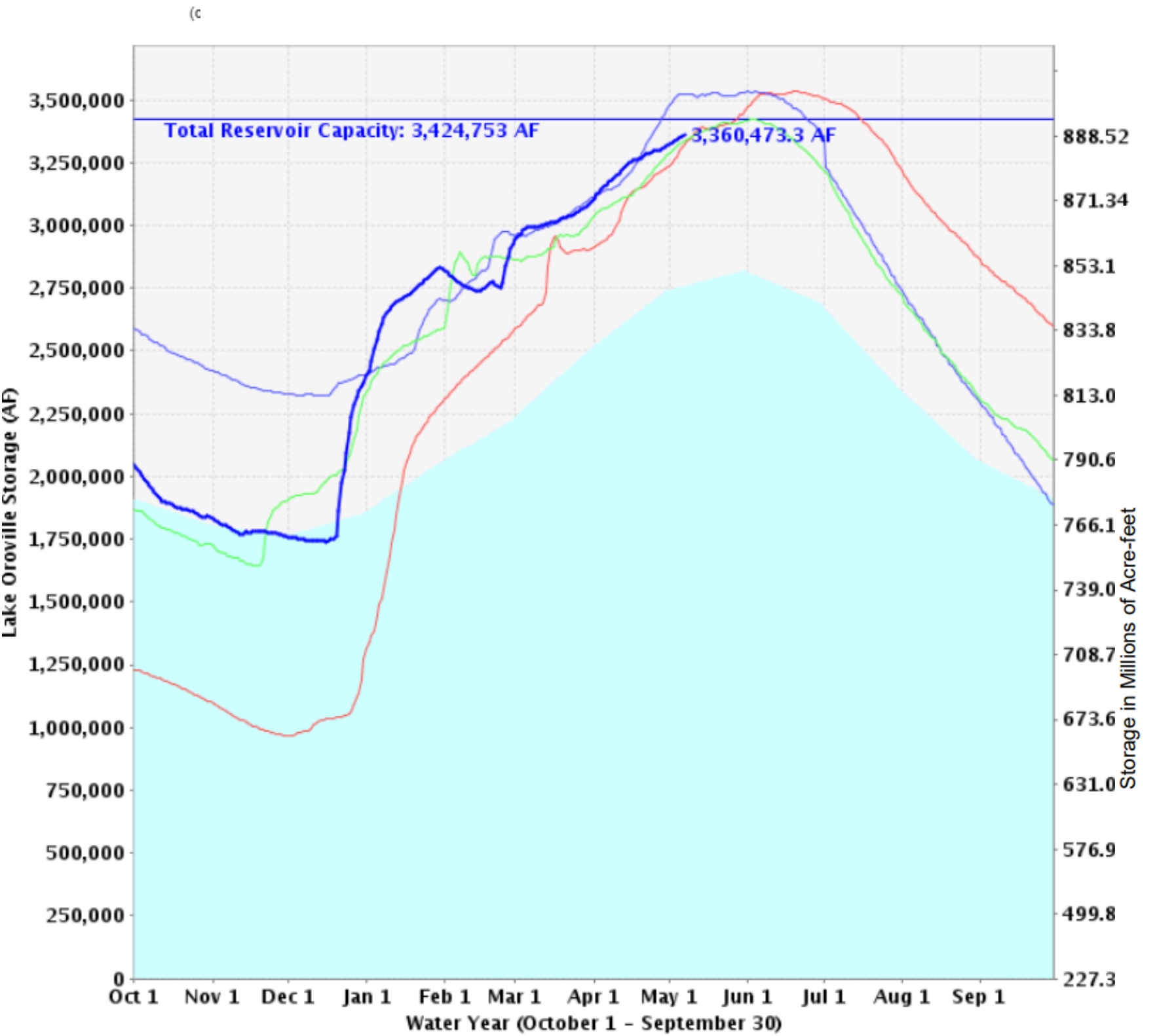
CA Snow Water Content - Percent of April 1 Average For: 08-May-2026



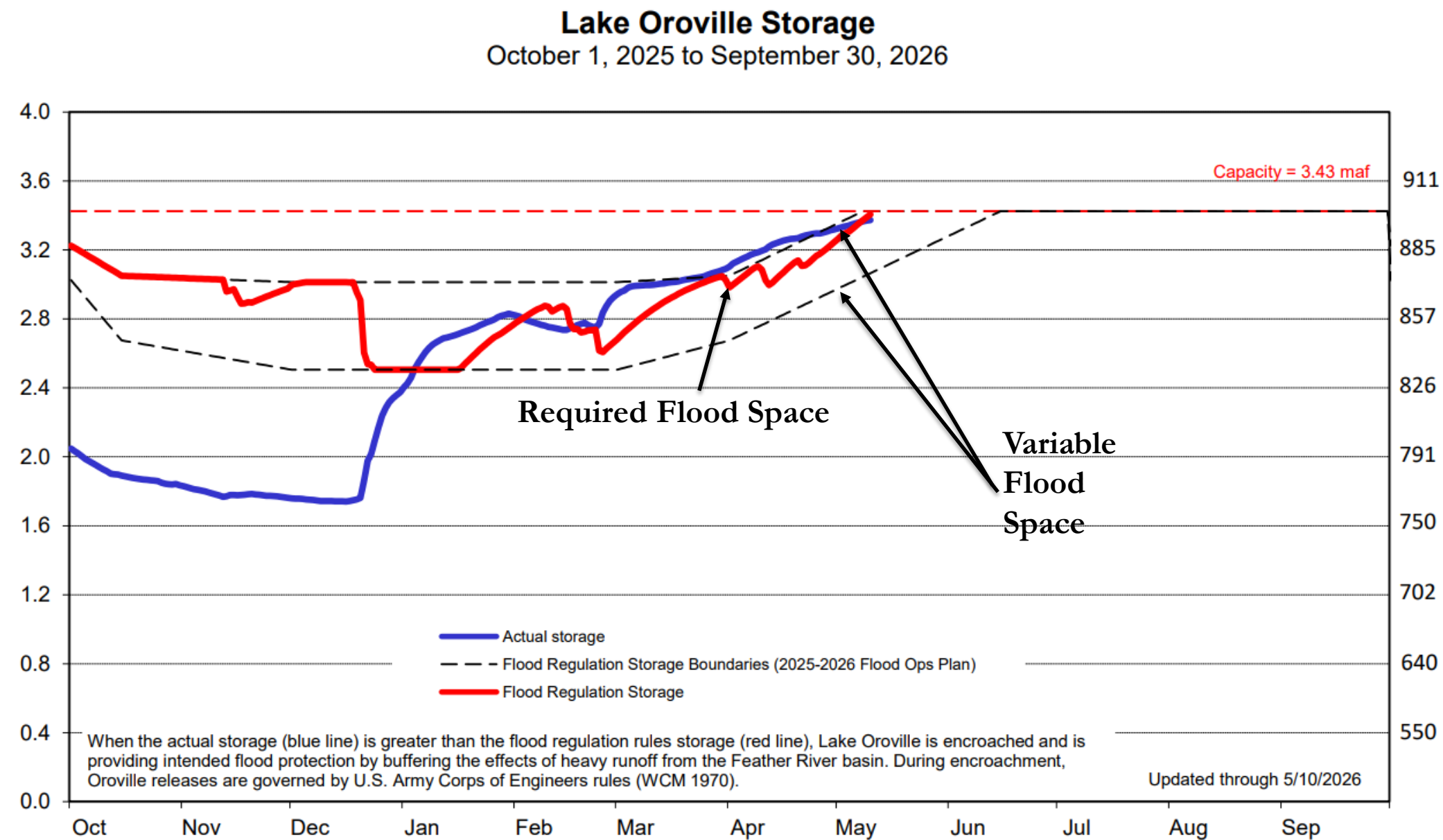
Average — 2022-2023 — 2023-2024 — 2024-2025 — 2025-2026 (current)

Statewide Percent of average to date **21.0%**

Lake Oroville WY 2026



Historical Average
Total Reservoir Capacity
2022-2023
2023-2024
2024-2025
2025-2026(current)



2026 SWP Winter/Spring -- Planning and Operations

SWP Actions to Date

Water Supply Forecasts and SWP Allocations:

- May 1 Bulletin 120 (DWR - Div of Flood Ops)
 - Sacramento Valley: Above Normal
 - San Joaquin Valley: Dry
- Monthly evaluations
- Final allocation typically issued in May



- ❖ Allocations:
 - Dec 2025: 10% initially
 - January 2026: increased to 30%
- ❖ State Water Contractor coordination ongoing

Typical Reservoir Operations:

- Releases for instream flow and Delta requirements
- Minimum releases for storage conservation
- Flood control operations



- ❖ Flood control releases in January, February and April
- ❖ April 2026: Beginning of refill period

Export Operations:

- Capture storm flows to move to San Luis Reservoir storage for later in the year
- Adjust for Delta requirements and ESA/CESA fisheries protections



- ❖ ESA/CESA fisheries protections in place
 - Reduced exports began late December
- ❖ Close coordination with Reclamation, CDFW, NMFS and USFWS on Delta operations



PERMIT ACTIONS

Old and Middle River (OMR) Actions in WY 2026

	Dec	Jan	Feb	Mar	Apr	May	Jun
OMR Management Season		X C C X X X	X X X X X X X X X X X X X C C C				
Delta Smelt	X S X X		X X X X X X X X X X X X X C C C				
Longfin Smelt							
Salmon		S S					
Steelhead							
Spring Outflow					S S S S S S S S S S S		
Storm Flex							

- X Controlling Combined Exports ITP & PA/BiOps OMRI of -6250 OMRI of -2000
- C Controlling CVP Exports ITP Only OMRI of -5000
- S Controlling SWP Exports PA/BiOps Only OMRI of -3500

Looking Ahead → 2026 SWP Summer/Fall Operations

- ❖ July through September: Increased Feather River releases of stored water from Lake Oroville:
 - To meet Delta outflow and water quality requirements
 - To maximize south Delta exports
- ❖ Summer/Fall ESA/CESA SWP Actions – Delta smelt habitat improvement
 - In Above Normal Years, the Incidental Take Permit requires Suisun Marsh Salinity Control Gates operations and Fall X2
 - DWR will be submitting an ITP amendment application to offramp from Fall X2
- ❖ Late Fall/Winter: Oroville storage conservation and 2027 planning begins



Water Control Manual (WCM) Update

- Feb 2026 - U.S. Army Corps of Engineers (USACE) kicked off National Environmental Policy Act (NEPA) process
- USACE is analyzing FIRO operations for potential inclusion in the WCM
- August 2026 - draft NEPA documents, draft WCM, and draft engineering report available for public review.
- Feb 2027 - Final Environmental Assessment
- Implementation in late 2027



Thank You

Tracy Hinojosa, PE
SWP Water Management
Tracy.Hinojosa@water.ca.gov