



**TO: California Water Commission Members
C/O Laura Jensen, Executive Director (VIA EMAIL)
California Water Commission
P.O. Box 942836
Sacramento, California 94236-0001**

CC: Amy Young, Water Supply Improvement Program (WSIP) Program Manager, cwc@water.ca.gov

**FROM: Del Puerto Water District and San Joaquin River Exchange Contractors Water Authority,
Del Puerto Canyon Reservoir Project Sponsors**

DATE: February 14, 2025

SUBJECT: Request for Consideration of Second Solicitation for Available Proposition 1 WSIP Funding

Dear California Water Commission Members:

In 2019, the Del Puerto Water District (DPWD) and the San Joaquin River Exchange Contractors Water Authority (SJRECWA), together the "Project Applicants," applied for a Consistency Determination for the proposed Del Puerto Canyon Reservoir Project (Project). By Resolution 2019-05 of the California Water Commission dated September 18, 2019, the Project was found to be consistent with the California Water Quality, Supply, and Infrastructure Improvement Act (Prop 1). In February of 2022, the Project Applicants requested consideration of the Project's eligibility should the Commission move forward with a second solicitation for the funding that was available at that time.

Although a second solicitation did not develop, the Project Applicants have continued forward and substantially advanced the Project, primarily with local Non-Public cost share supported by a 25% Federal match of \$18 million from the Water Infrastructure Improvements for the Nation (WIIN) Act. Excepting a \$1 million Integrated Regional Water Management (IRWM) Grant, State financial support for the Project has been largely unavailable despite letters of support from the Governor's Office, Stanislaus County, and a bi-partisan collective of elected officials since the Projects' inception. We again request your consideration of support for a second solicitation, as our uniquely situated South-of-the Delta Project will definitely afford the State of California and its beneficial users of water a more resilient and reliable water supply to prepare for worsening conditions due to a changing climate, and serve to mitigate the complications associated with the ecological health of the Sacramento-San Joaquin River Delta and the unreliability of water supply to one of the most productive food-producing regions in our State.

Specifically, the Del Puerto Canyon Reservoir (DPCR) would provide for storage of Central Valley Water (CVP) water allocations during wet (non-critical) years which would subsequently be used during drier, critical years for a multitude of diverse benefits and beneficiaries, including:

- **Reliable Surface and Groundwater Supplies, Improved Water Quality, Operational Flexibility and Drought Resiliency South of the Delta** will be achieved with 82,000 af of CVP Water storage capacity without increased pumping demands through the Delta, which will benefit highly productive farmlands in San Joaquin, Stanislaus, Merced, Fresno, and Madera counties and reduce Delta water dependency during critical years.
- **Incremental Level Four Water Supply for Central Valley Improvement Act (CVPIA) Wildlife Refuges** to secure water supply reliability for the 75,000 acre Grassland Resource Conservation District and our local private, State and Federal Wildlife Refuges, benefitting grasslands, wetlands, wildlife corridors, and migratory bird species.
- **Municipal & Industrial Water Supply Reliability and Food Risk Reduction** for the City of Patterson to remove homes, businesses and a proposed high school location from the FEMA flood maps and capture flood flows to benefit groundwater recharge, saving millions of dollars in potential flood damages and supporting a reliable local municipal groundwater resource.
- **Non-Public Cost Share Coupled with Federal Support:** The DPCR is a private public partnership with 75% of the cost-share currently being provided by the Project Applicants in addition to what is now \$18 million in funding commitments from the Federal Water Improvements Infrastructure for the Nation (WIIN) Act. Maximizing the Federal investment in DPCR by securing State Water Storage Investment Program (WSIP) funding would greatly benefit California and the small, rural communities that the Project Applicants serve.
- **State and Federally Supported:** DPCR has received Letters of support from California Governor Gavin Newsom, the Stanislaus County Board of Supervisors, the U.S. Secretary of Interior, Water and Science, the late U.S. Senator Dianne Feinstein, U.S. Congressman Josh Harder, and U.S. Congressman Jim Costa, as well as positive support from U.S. Congressman John Duarte, and many other past and present bi-partisan members of the California Legislature and Congress.

It goes without saying that water resiliency and reliability would provide increased certainty for the future operations of the agricultural and industrial businesses served by the Project Applicants, which is key to sustaining local jobs and water reliability for the many disadvantaged communities in our westside San Joaquin Valley region. The Project also provides public benefits not otherwise available to our region, especially flood risk reduction for our small community and benefits to the incredibly valuable last remaining portions of the Pacific Flyway and San Joaquin Valley Wildlife Refuges, which suffer similarly to agriculture when water supply is scarce and unreliable. We also truly believe that the Project adds the nation-wide public benefit of a safe and abundant local food supply, which is a basic requirement of our national security.

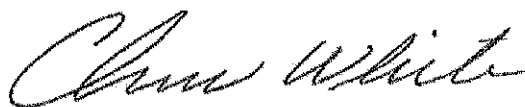
Respectfully, we encourage the Commissioners to consider our progress and to support our efforts to realize this very important regional project to improve South-of-Delta surface storage. We look forward to any opportunity that you may make available.

Very Sincerely Yours,

Anthea G. Hansen, DPWD General Manager



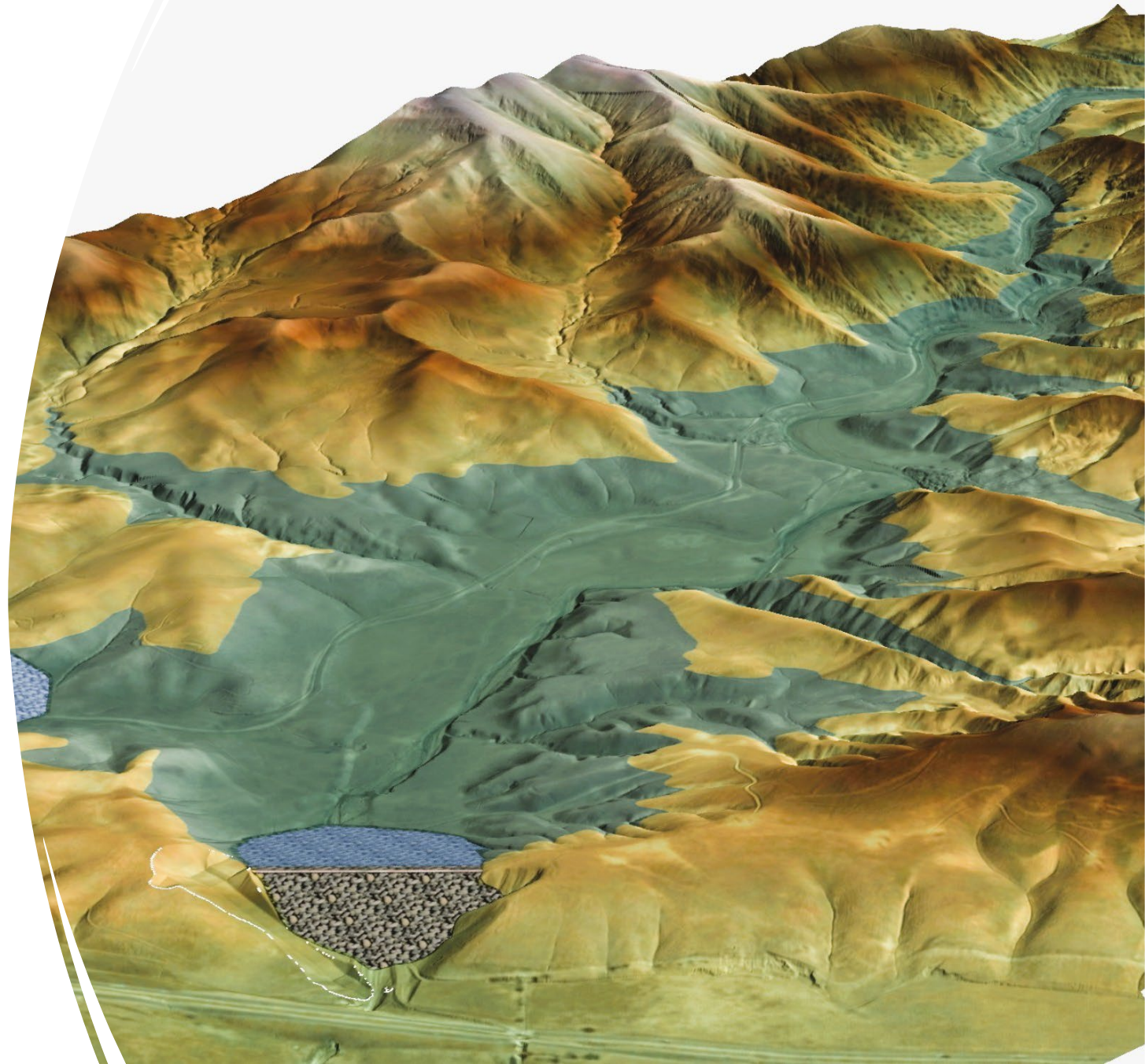
Chris White, SJRECWA Executive Director



Del Puerto Canyon Reservoir

California Water Commission
Update

February 19, 2025

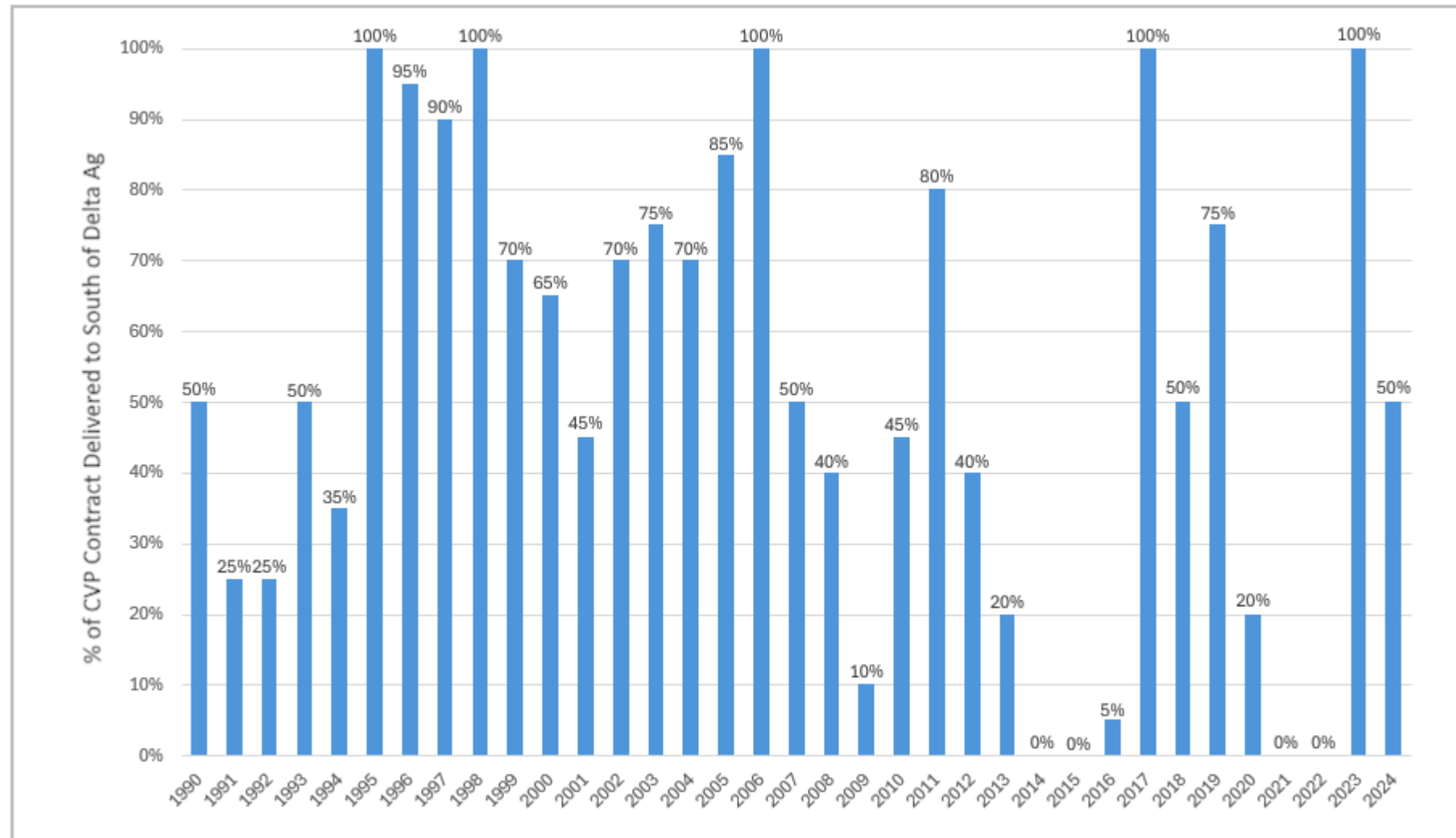


Water Supply Challenges Present a Unique Opportunity for Program Partners

- Program Partners
 - Del Puerto Water District (DPWD)
 - San Joaquin River Exchange Contractors Water Authority (SJRECWA)
- Program Partners rely on water from the Central Valley Project (CVP)
- Historical CVP allocations are widely variable
- DPWD has highly uncertain access to storage in San Luis Reservoir (SLR) on an annual basis; Exchange Contractors have no access to storage in SLR

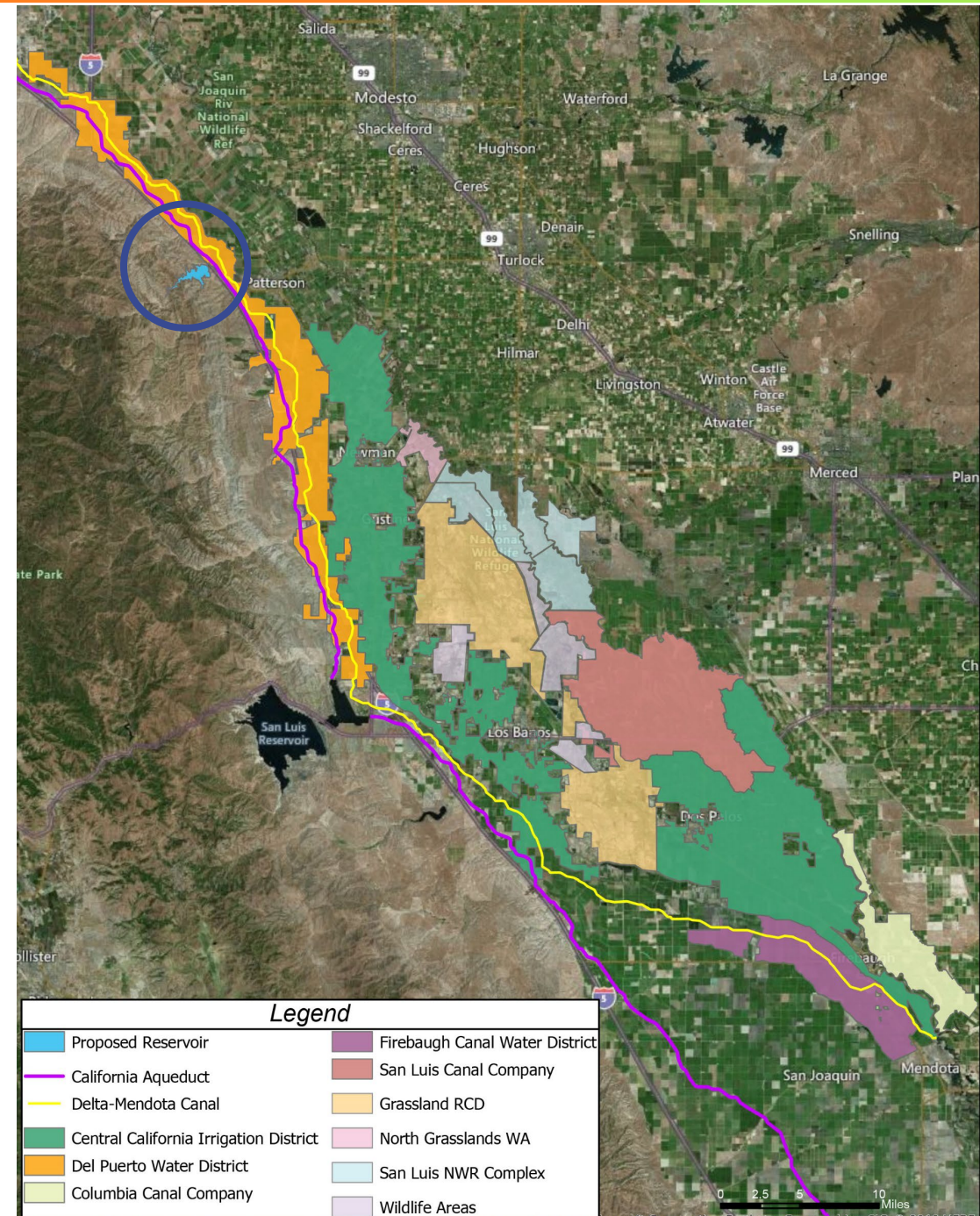


Average SOD CVP Ag Allocations from 2010 to 2024 Were Only 39%



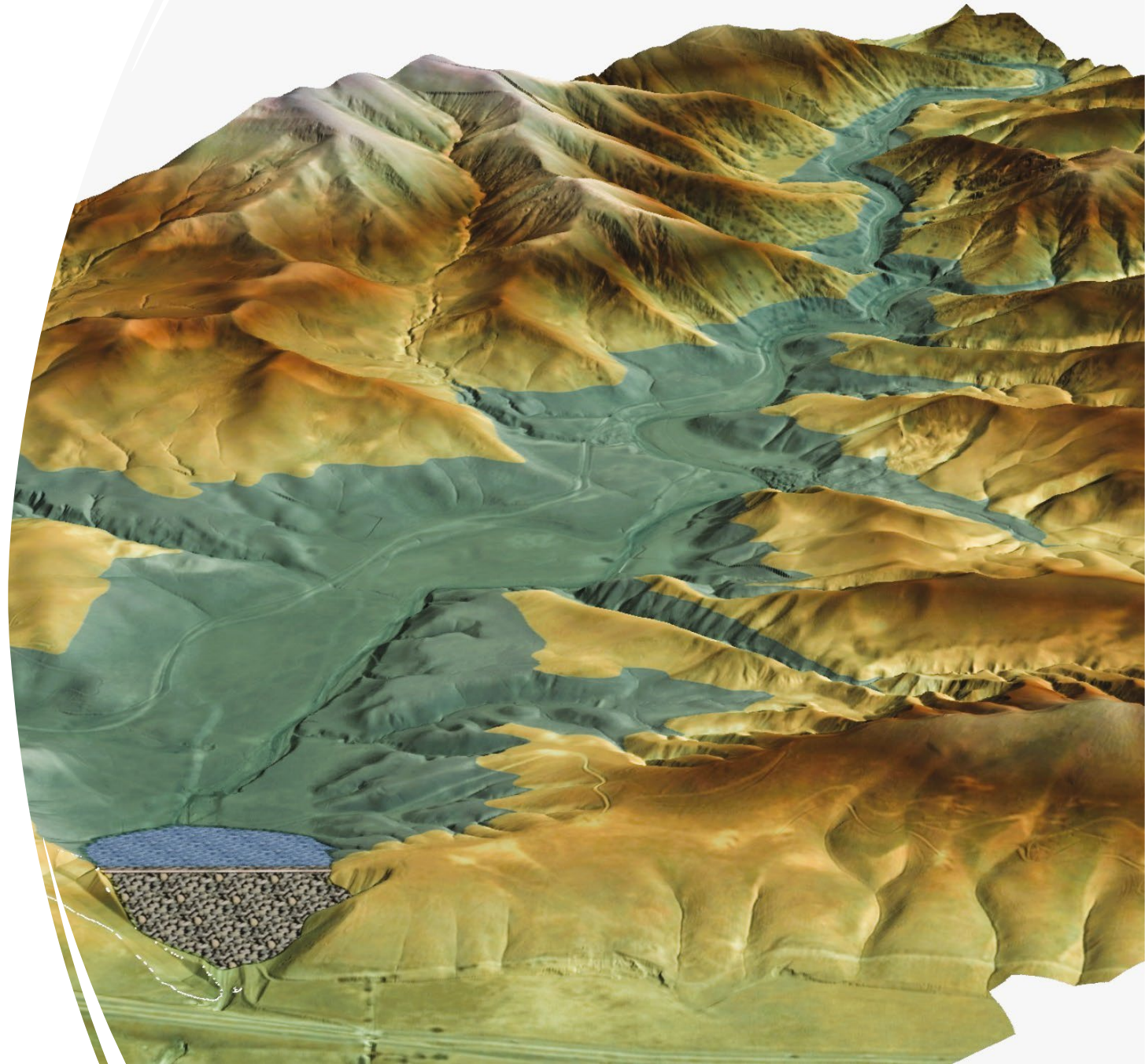
DPCR Provides Multiple Benefits

- Increased South Of Delta (SOD) Storage
 - Improved CVP Reliability
 - SOD Drought Resiliency
- Water Supply
 - Agriculture
 - Groundwater Management
- Environmental
 - Wildlife Refuges – Supply/Storage
 - Del Puerto Creek Enhancements
- Regional Economy
 - Jobs/Farm Gate Output
 - Flood Risk Reduction



Del Puerto Canyon Reservoir Will Provide Local Control and Reliability

- Up to 82,000 Acre Feet (AF) storage
- 55,000 to 60,000 Acre Feet per Year (AFY) yield
- Approximately 300 Cubic Feet per Second (CFS) of Put/Take capacity
- 260-foot high earth fill dam
- Connection to Delta-Mendota Canal

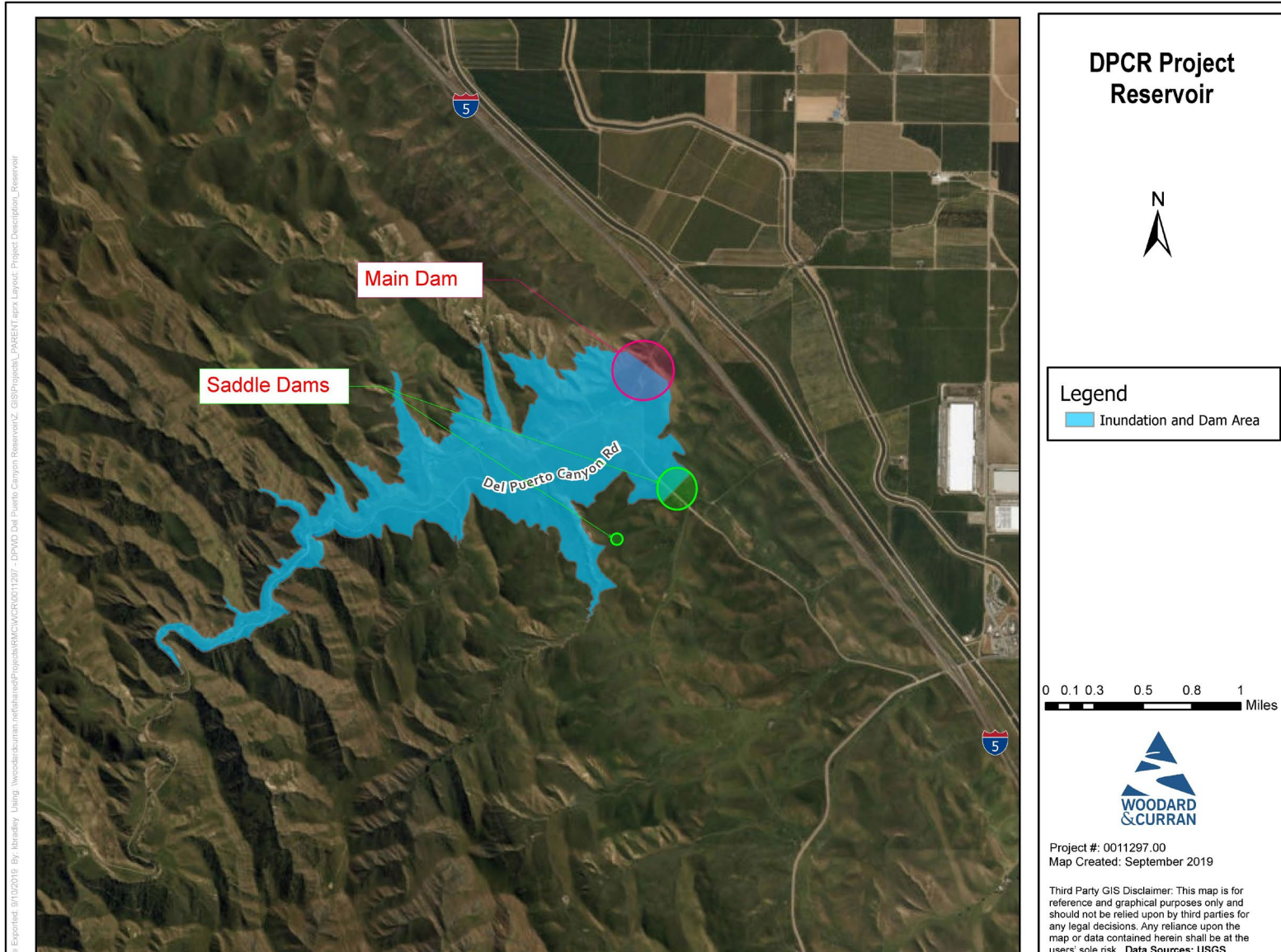


Reservoir Facilities

- Reservoir: main dam, 2 saddle dams, spillway, inlet/outlet works
- Conveyance pipeline
- Diversion/outfall facility on DMC, pumping plant, appurtenant components
- Electrical facilities and substation
- Relocation of Del Puerto Canyon Road
- Relocation of existing utilities (telecommunications, oil pipeline)

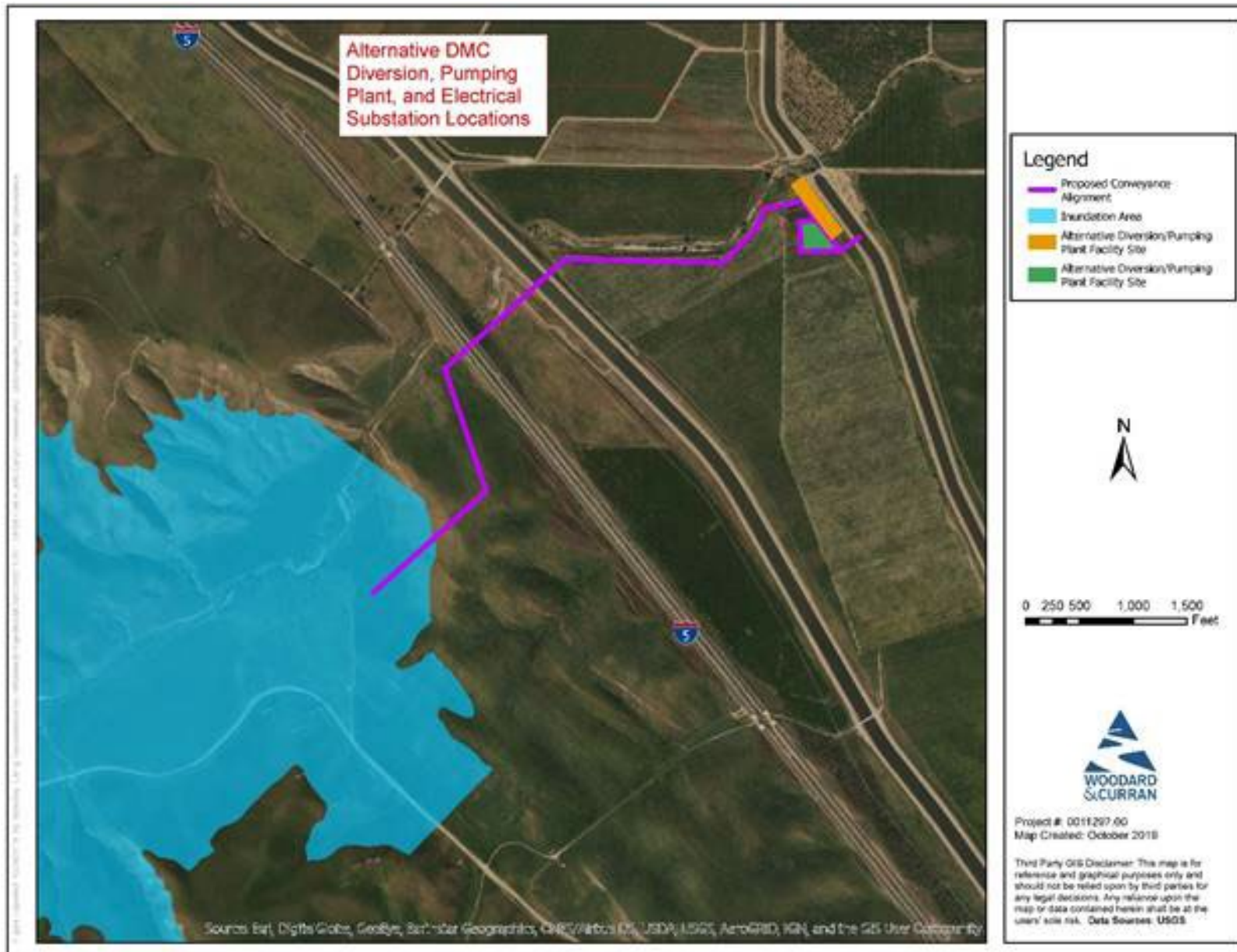


Main Dam and Saddle Dams

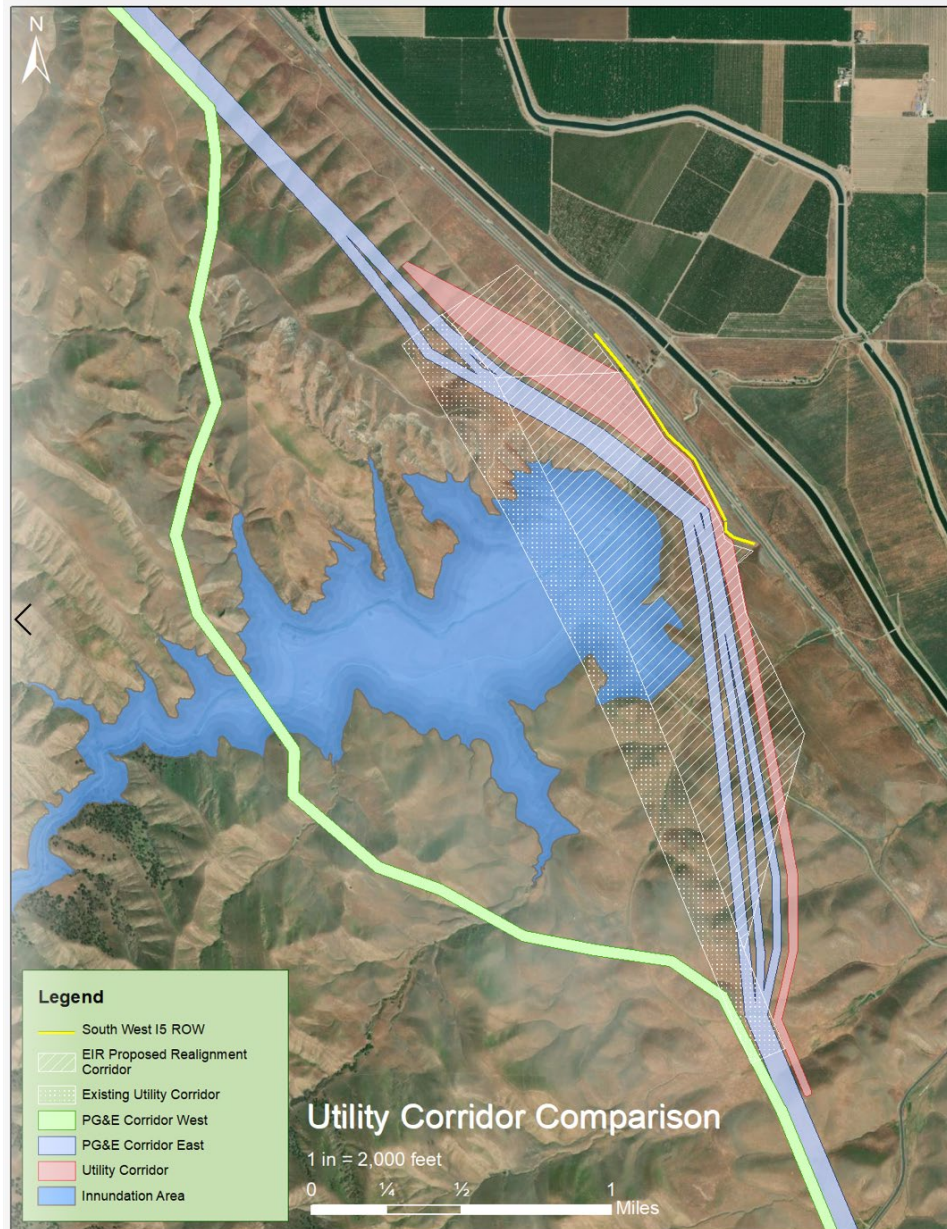


Esri | ArcGIS Desktop | Release 10.5.1 | User: Administrator | Project: DPCR Project Reservoir | Project: DPCR Project Reservoir

Project Conveyance



Utility Relocation



Recent Activities

- Extensive geotechnical investigations
- Technical studies for dam and roadway
- Environmental studies



Recent Activities

- Extensive geotechnical investigations
- Technical studies for dam and roadway
- Environmental studies



Recent Activities

- Roadway relocation Design Alternatives Analysis Completed June 2024
- Coordination with Stanislaus County Department of Public Works.
- 10 Alternatives were evaluated; reduced to 4.
- Evaluation of 39 criteria in 7 different Categories:
 - Maintainability, Constructability, Transportation, ROW/Land, Environmental, Cost, Community Benefits
- Board of Supervisors approved final Alternative on January 29, 2025.



Status & Next Steps

Item	Status	Next Steps
Environmental Studies	EIS being drafted EIR was completed in 2020, will be revised to reflect roadway changes	ADEIS spring 2025
Dam	Extensive field exploration completed 30% Design completed	Submit 30% plans to Ca. Division of Safety of Dams, spring 2025
Road Relocation	Alignment refined based on updated topo survey, environmental field studies	30% design early 2025
Conveyance	30% Design completed	Final design
Utility Relocation	30% Design of transmission lines completed Topo information updated Access road design being advanced	30% Design of access roads 60% Design of transmission lines



Del Puerto Canyon Reservoir

Thank you for your consideration!

