



# Chino Basin Program

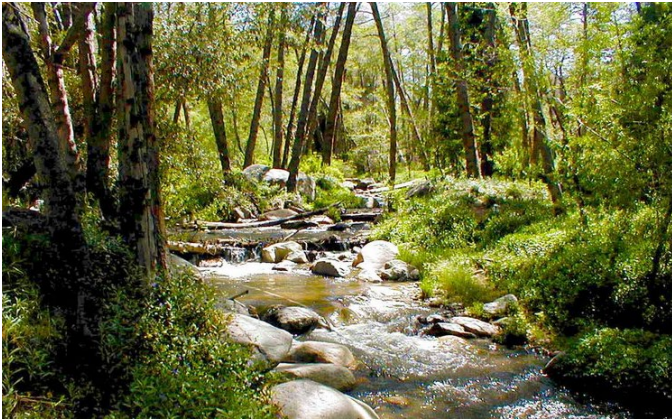
California Water Commission

Early Funding Request

November 15, 2023



# Agenda



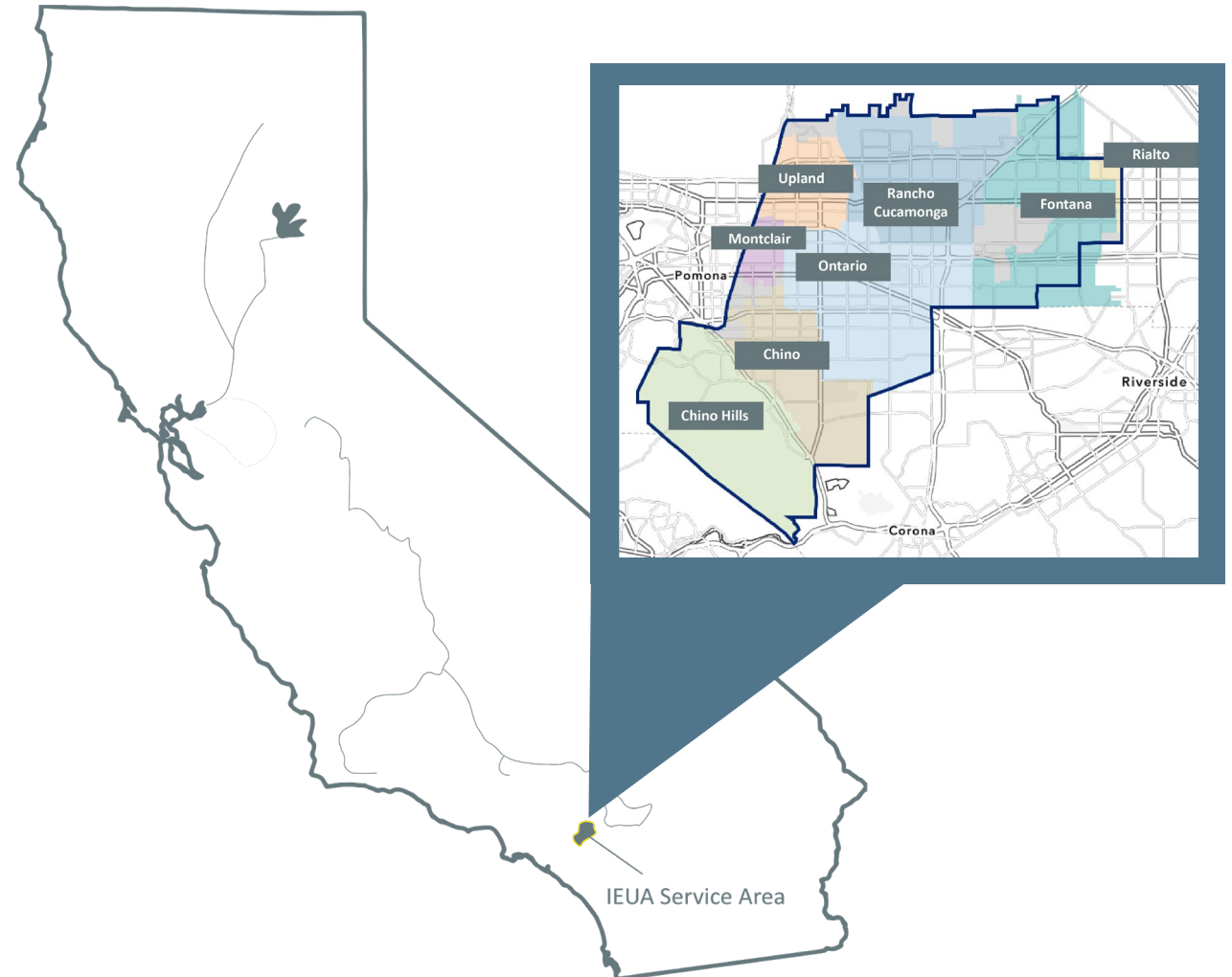
- Overview of the IEUA Chino Basin Program
- Chino Basin Program Benefits
- Updated Conditional Award  
Early Funding Agreement  
Amendment Request
- Implementation & Construction Schedule



# Overview of the Chino Basin Program

Chino Basin Program (CBP) develops local infrastructure to improve water supply reliability:

- CBP is a series of local water treatment and storage projects
- Exchange agreements provide north of Delta pulse flow for ecosystem benefits
- Designed to modernize storage and delivery systems of regional water supplies





# CBP | WSIP Overview

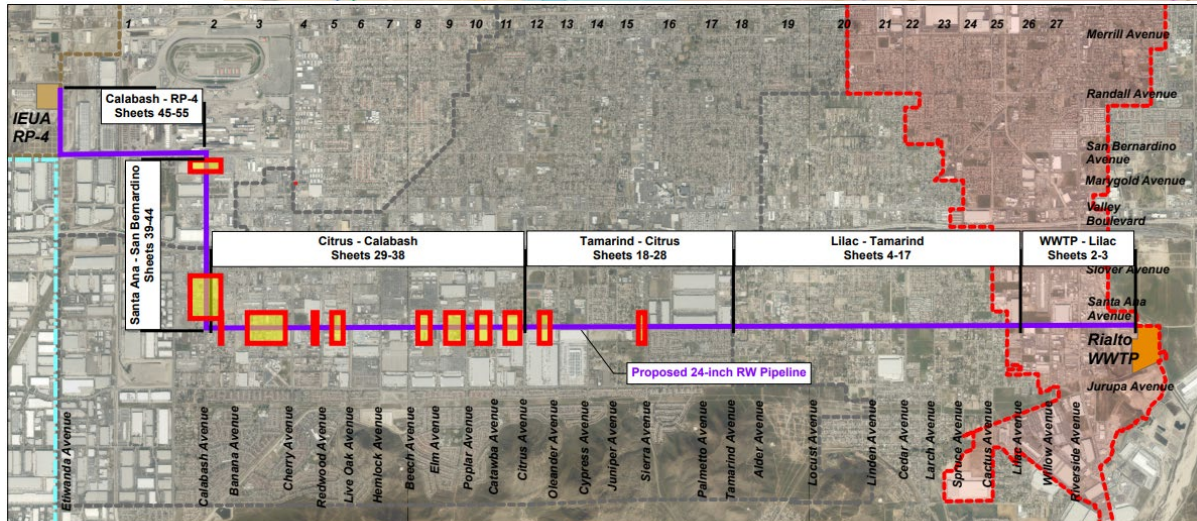
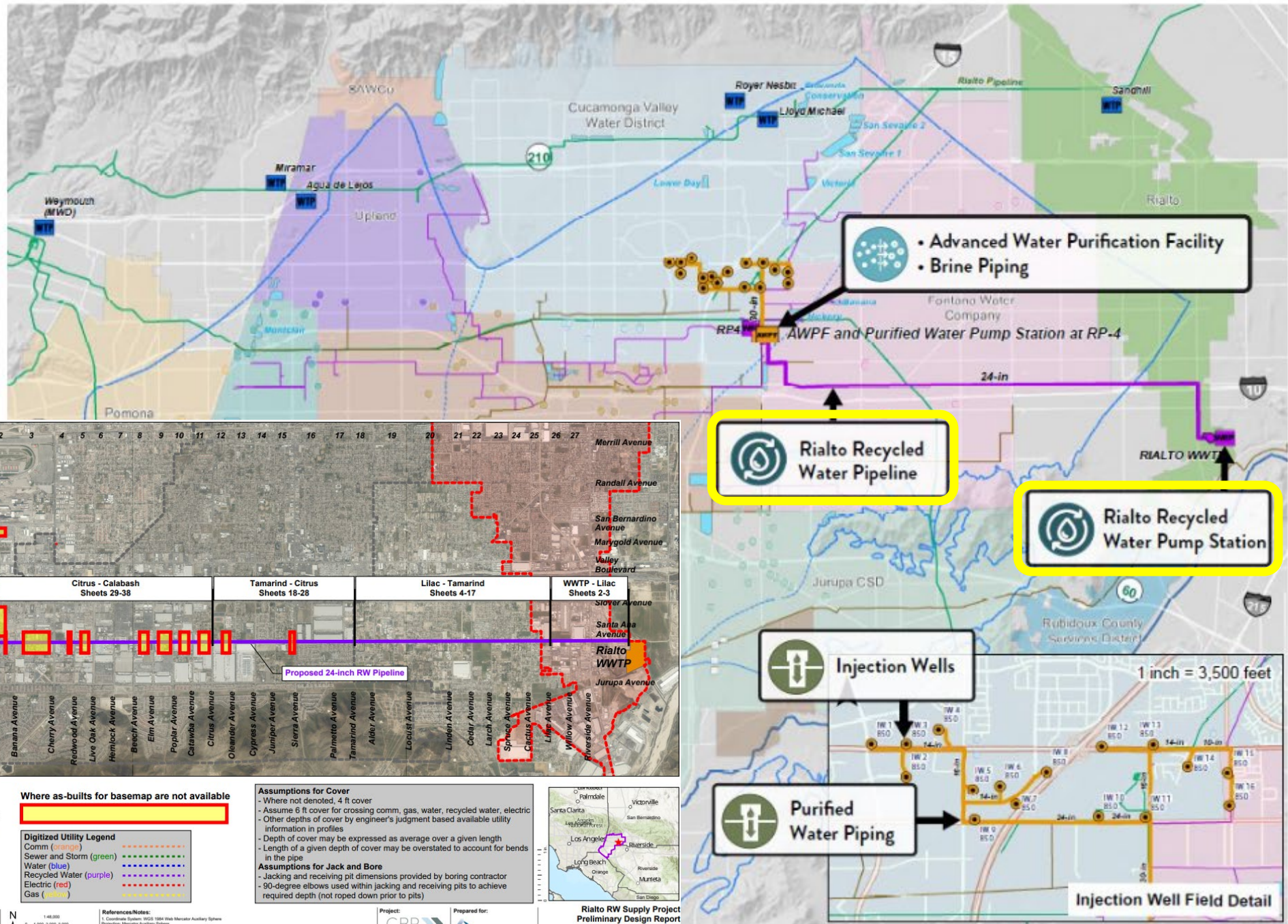
- 1 Advanced treatment of recycled water supplies
- 2 Store treated water in the Chino Groundwater Basin
- 3 In exchange-production years, stored groundwater is pumped for local use  
&
- 4 State releases water from Lake Oroville reservoir
- 5 Released water flows to the Feather River to improve survival of migrating salmon
- 6 Water flows downstream through the Bay Delta, to the ocean



# PUT- Infrastructure



RW Supply  
External



**Explanation**

**Jurisdictions**

- Rancho Cucamonga
- Fontana
- Rialto
- Ontario

**Wastewater Treatment Plants**

- IEUA RP-4
- Rialto WWTP

**Where as-builts for basemap are not available**

**Digitized Utility Legend**

- Comm (orange)
- Sewer and Storm (green)
- Water (blue)
- Recycled Water (purple)
- Electric (red)
- Gas (yellow)

**Assumptions for Cover**

- Where not denoted, 4 ft cover
- Assume 6 ft cover for crossing comm, gas, water, recycled water, electric
- Other depths of cover by engineer's judgment based available utility information in profiles
- Depth of cover may be expressed as average over a given length
- Length of a given depth of cover may be overstated to account for bends in the pipe

**Assumptions for Jack and Bore**

- Jacking and receiving pit dimensions provided by boring contractor
- 90-degree elbows used within jacking and receiving pits to achieve required depth (not roped down prior to pits)



Prepared by:  
**Brown-Caldwell**

Author: AMB  
Date: 4/12/2023

**WASC**

148,000  
1:500 0.000 3.500  
Scale: WGS 1984

**References/Notes:**

1. Coordinate System: WGS 1984 Web Mercator Auxiliary Sphere  
Projection: Mercator Auxiliary Sphere  
Datum: WGS 1984

Project:  
**CBP**  
Preliminary Design Report

Prepared for:  
**Water Infrastructure Agency**

**Rialto RW Supply Project**  
Preliminary Design Report  
Preliminary Alignment

Preliminary Draft - 2023-04-12

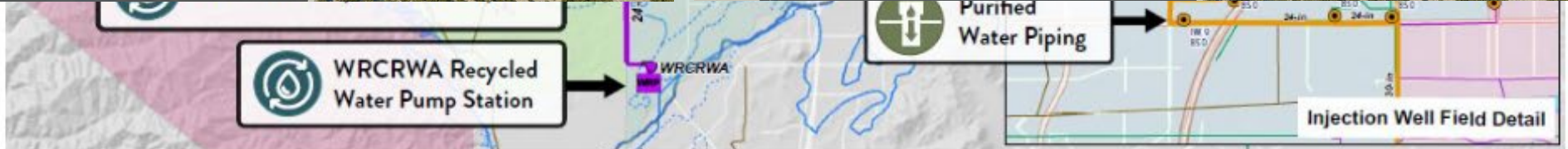
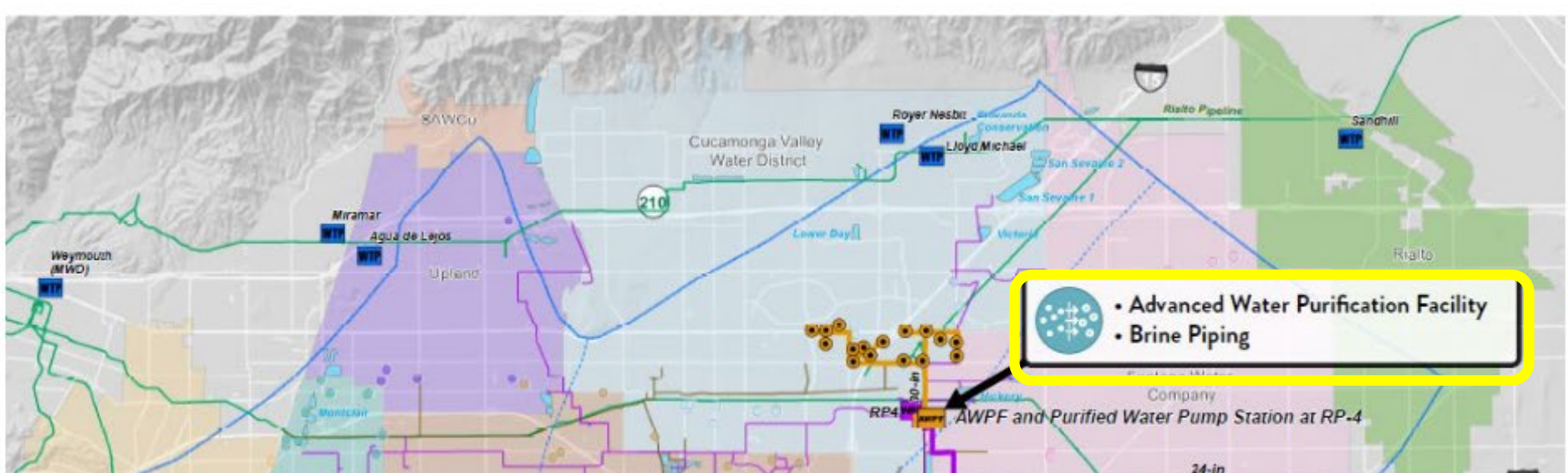
# PUT- Infrastructure



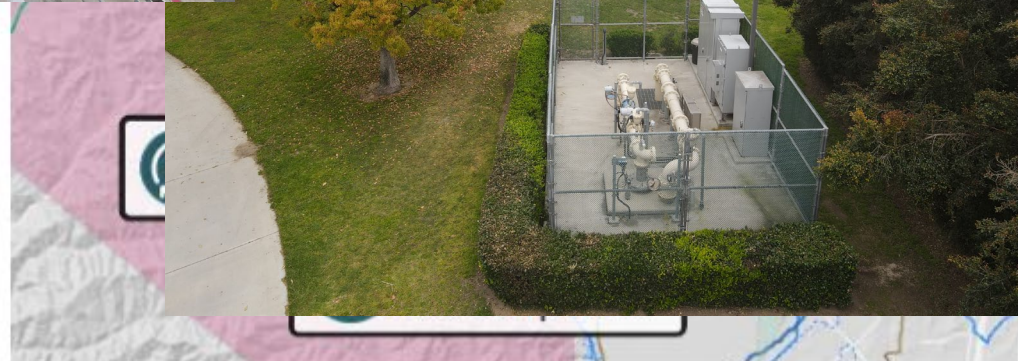
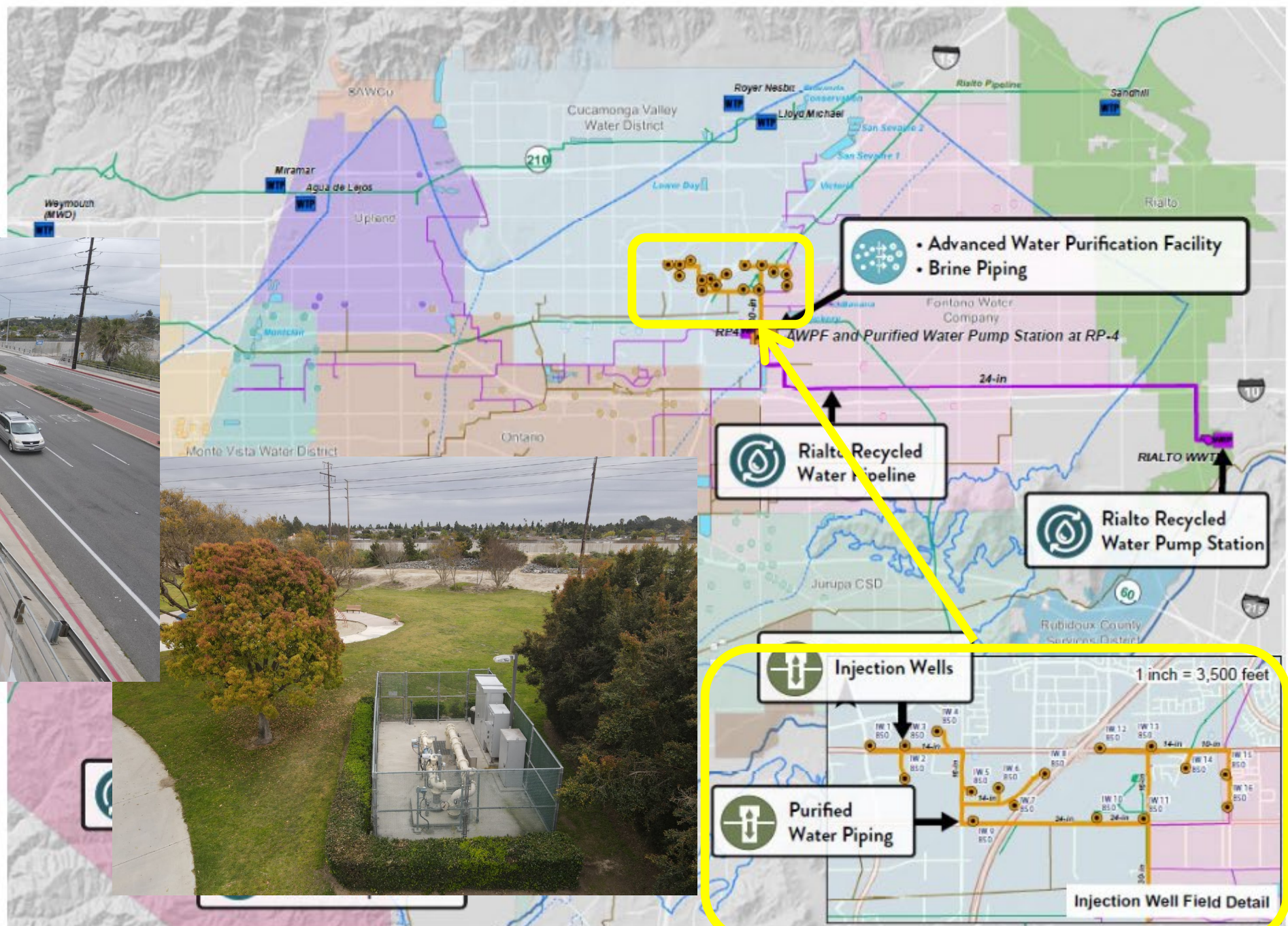
RW Supply  
External



AWPF



# PUT- Infrastructure



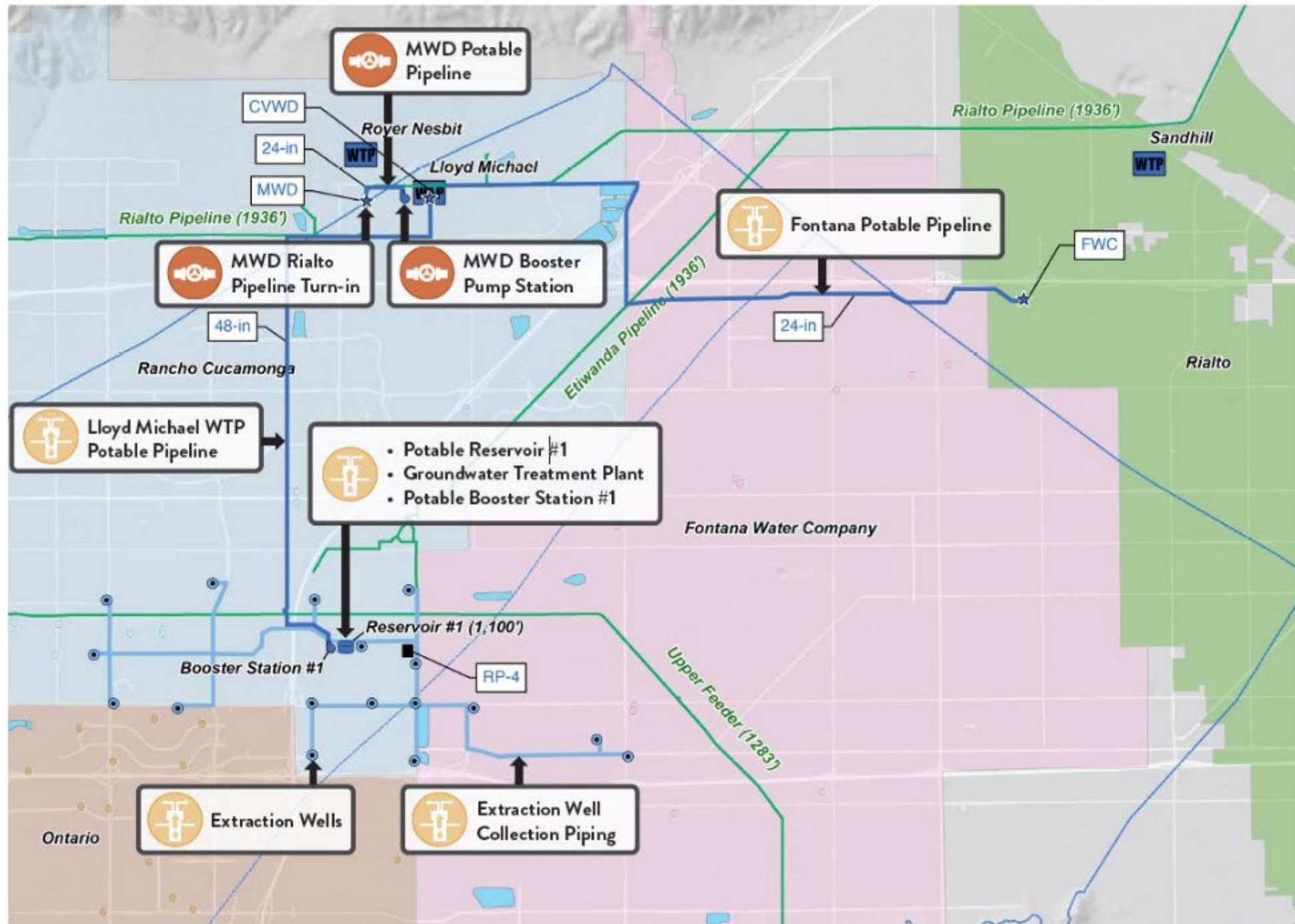
# TAKE-Infrastructure



## Extraction & Regional Distribution



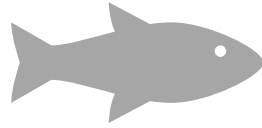
## MWD Interconnection







# Chino Basin Program Benefits



## Ecosystem Benefits

- 100% dedicated Delta supply of 375,000 AF
- Dedicates blocks of water for ecological needs
- Releases from Lake Oroville benefit Feather River spring run Chinook salmon and aquatic habitat



## Public Project Benefits

- Facilities will provide high quality water to improve local water resiliency
- Provides local water quality treatment and benefits
- 50,000 AF emergency supplies



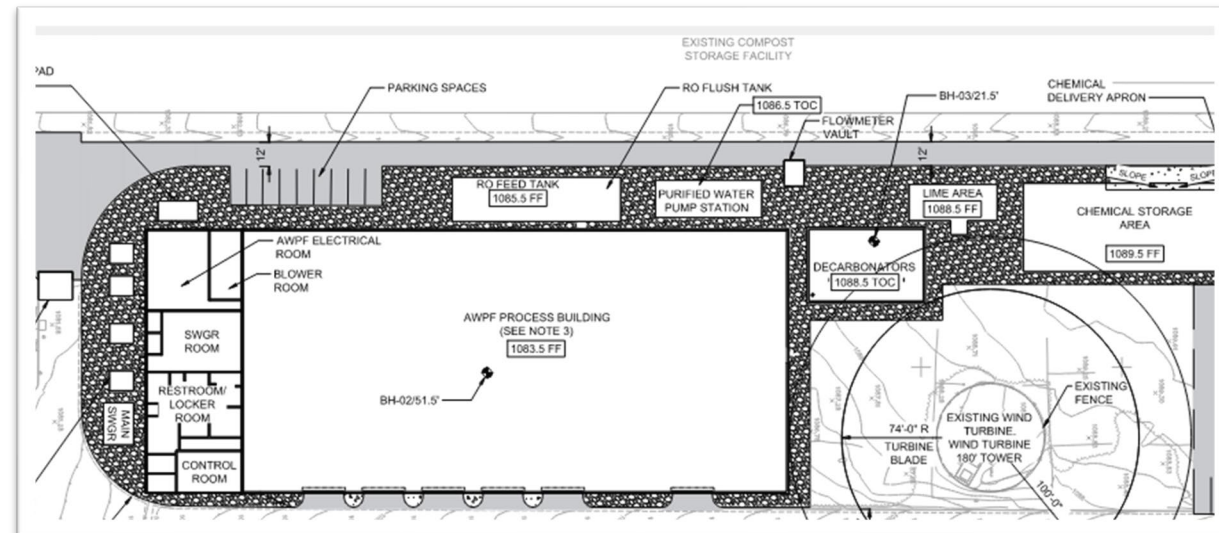
# Early Funding Agreement

## Initial Early Funding Agreement

- Scope:
  1. Project Administration and Communication
  2. Environmental Documentation and Permitting
  3. Feasibility, Design and Technical Studies
- Term: December 2025

## MCED: \$215M

- Eligible Early Funding (5%): \$10.8M
- Initial Award: \$8.9M





# Status on Early Funding Agreement Deliverables

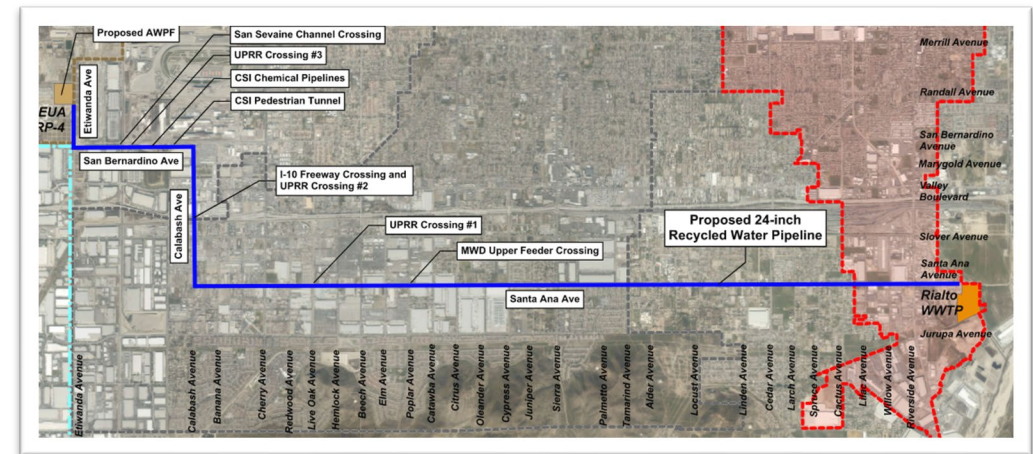
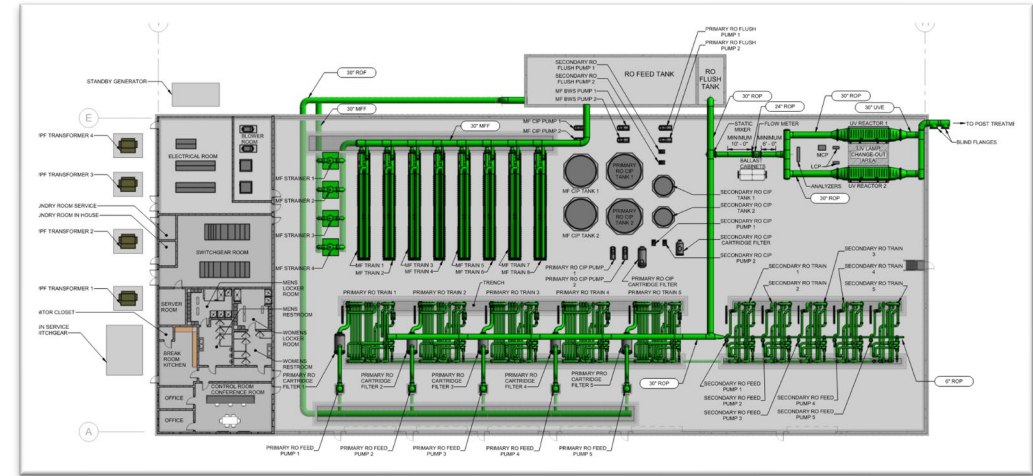
## 1. Project Administration and Communication

## 2. Environmental Documentation and Permitting

- Program Environmental Impact Report completed May 2022
- Initiated permitting plan

## 3. Feasibility, Design and Technical Studies

- Feasibility Study completed October 2021
- Draft Preliminary Design Reports:
  - Advanced Water Purification Facility completed September 2023
  - Rialto Recycled Water Interconnection Pipeline completed September 2023
  - Injection Wells completed October 2023
  - Initiating Take Facilities PDR January 2024





# Early Funding Amendment Request

Request additional \$1.8M Early Funding to support continuing program development

**1. Project Administration and Communication**

- Local stakeholder and community outreach
- Public Benefit Contracts

**2. Environmental Documentation and Permitting**

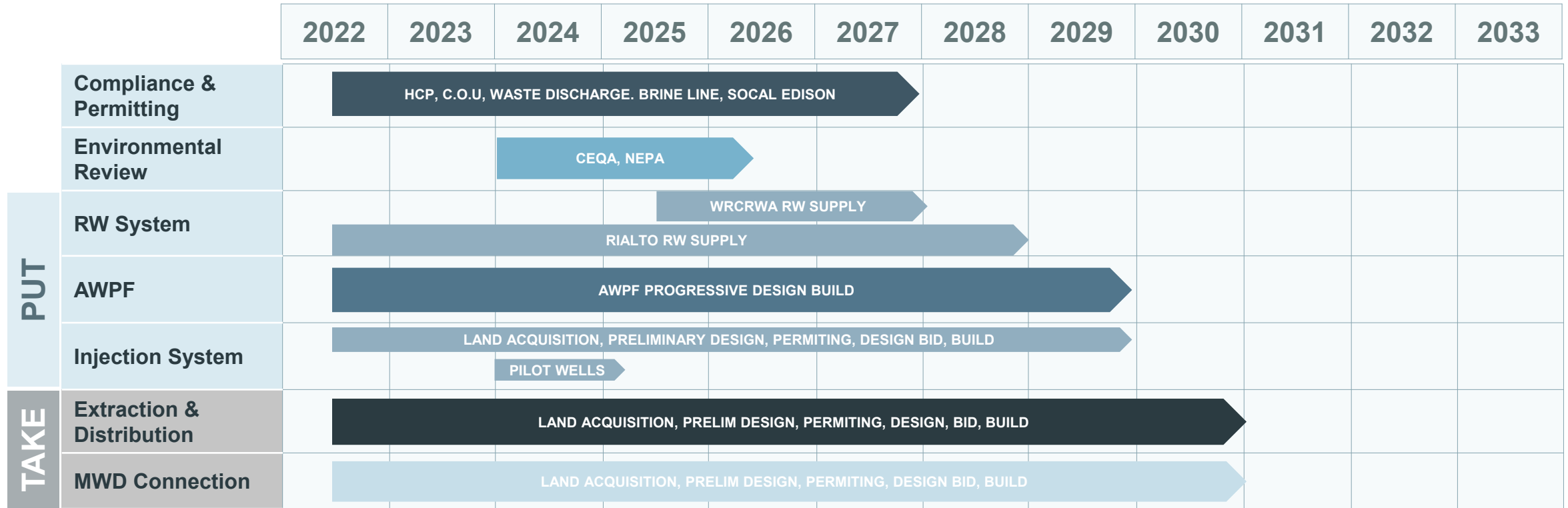
- DWR pulse flow Supplemental Environmental Impact Report
- Finalize permitting plan and draft applications

**3. Feasibility, Design and Technical Studies for Take Facilities**

- Preliminary Design Report for Extraction and regional distribution system
- Preliminary Design Report for MWD interconnection



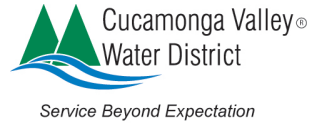
# Implementation & Construction Schedule





# Chino Basin Program Partners & Supporters

## Partners



## Supporters





# Thank You

Questions?

Project Information:



[www.chinobasinprogram.org](http://www.chinobasinprogram.org)

Contact Information:

## **Christiana Daisy**

Deputy General Manager  
Inland Empire Utilities Agency  
P.O. Box 9020  
Chino Hills, CA 91709  
(909) 993-1762  
cdaisy@ieua.org

## **Elizabeth Hurst**

Chino Basin Program Manager  
Inland Empire Utilities Agency  
P.O. Box 9020  
Chino Hills, CA 91709  
(909) 993-1634  
ehurst@ieua.org