



# Harvest Water

## Conjunctive Use and Ecological Resilience Work Together

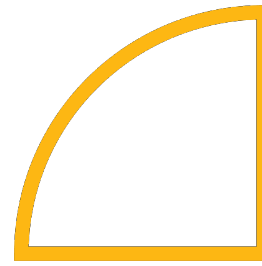
Terrie Mitchell

Sacramento Regional County Sanitation District

June 21, 2023

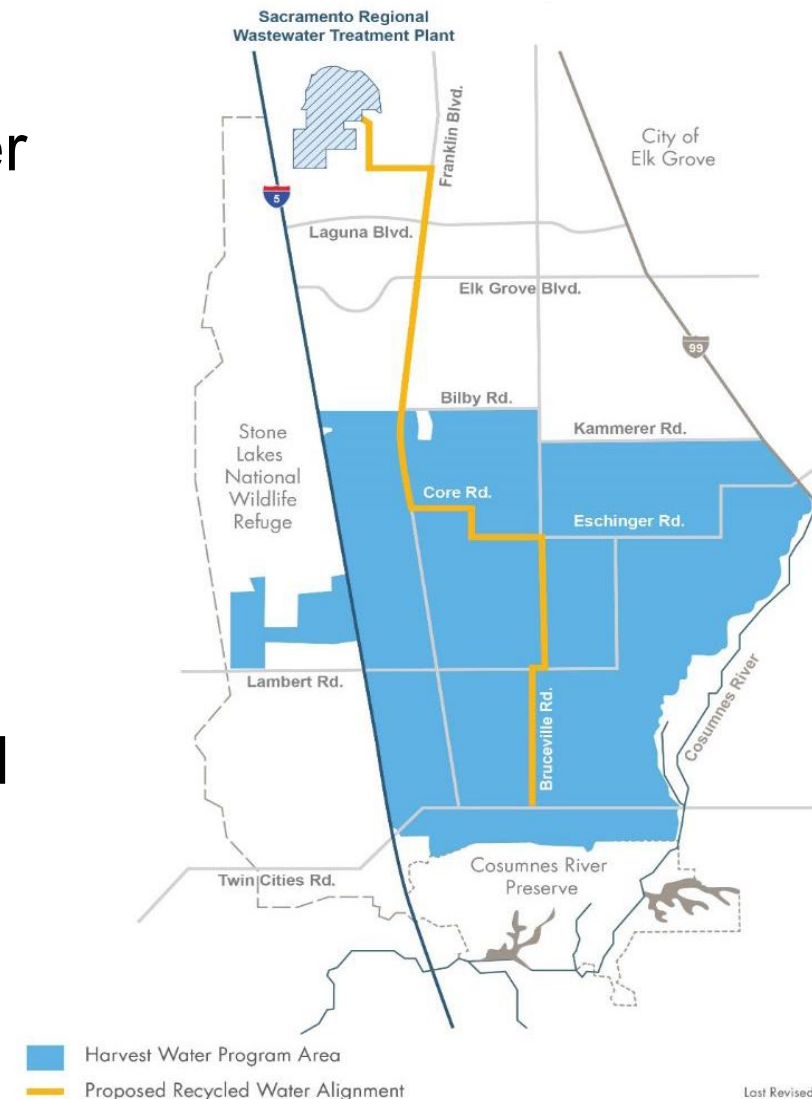
# Topics Covered Today

- ◆ Overview of the Harvest Water Program
- ◆ Summary of benefits
- ◆ Program Schedule
- ◆ Updated capital costs in 2022 dollars
- ◆ Updated value of benefits in 2022 dollars
- ◆ Harvest Water Request for Final WSIP Funding Award
- ◆ Future WSIP funding opportunities



# Harvest Water – California is investing in a water storage project that:

- Delivers up to 50,000 AFY of recycled water to over 16,000 acres of ag and habitat land
- Produces multiple public benefits including:
  - Groundwater restoration
  - Ecosystem improvements
  - Water quality improvements
  - Drought and climate change resiliency
- Provides conjunctive use for the region and qualifies for full WSIP funding
  - Current MCED set at \$291.8 Million
  - Received the highest Relative Environmental Score and lowest Implementation Risk in the WSIP Application Process





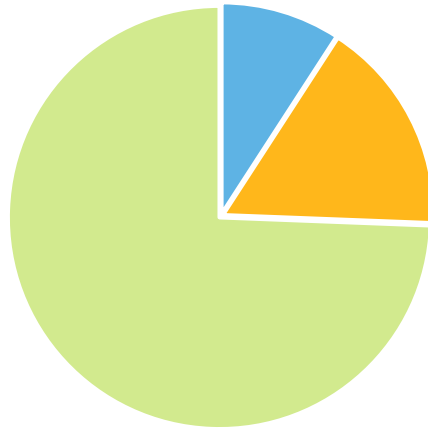
# Facilitating Collaboration & Building Partnerships



# Harvest Water is integral part of South American Subbasin Groundwater Sustainability Plan (GSP)

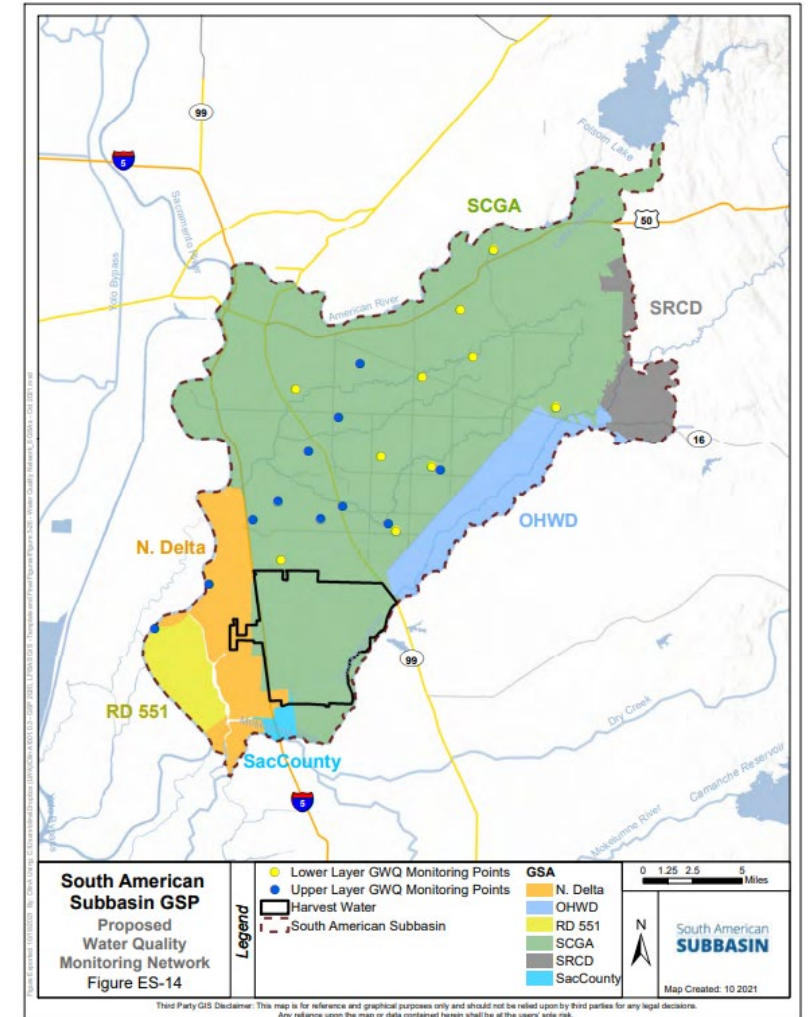
- Harvest Water is partnering with multiple GSAs
- Regional San is a Board member of the Sacramento Central Groundwater Authority
- Harvest Water is the largest of 3 projects listed for near-term implementation in the GSP

Harvest Water will provide 32,500 AFY of in-lieu recharge



OHWD Recharge Project will provide 4,000 AFY

Regional Conjunctive Use Project will reduce pumping by 7,000 AFY



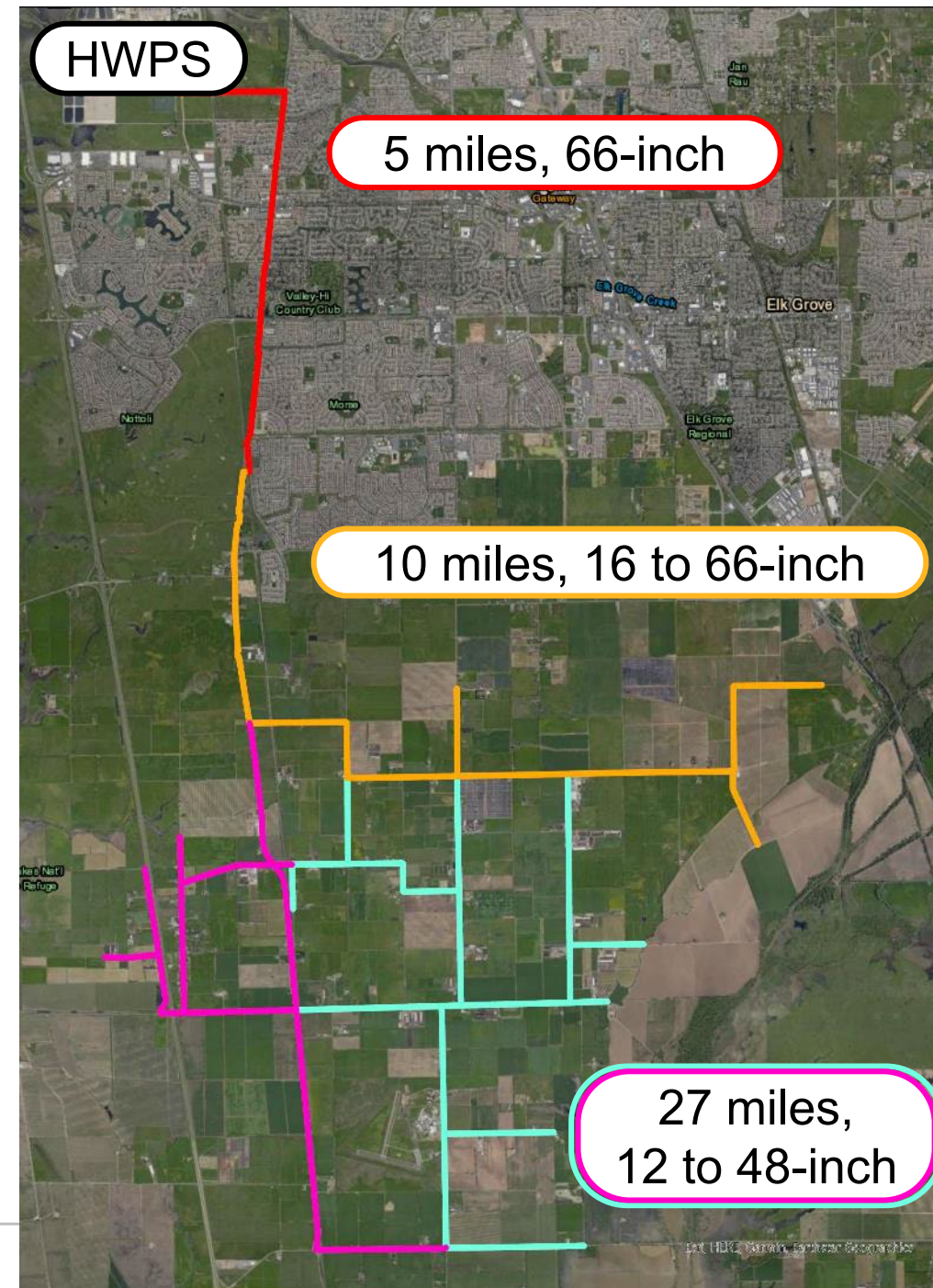
# Harvest Water Status to Date

- Completed feasibility study
- Completed CEQA and NEPA environmental documents
- Obtained all necessary environmental permits
- Secured water rights
- Completed annexation of Program area into Regional San's service area for recycled water delivery
- Received Letters of Intent from growers representing 100% of demand
- **Executed CAPBs with CDFW and SWRCB**
- **Project designs almost complete, construction bids expected summer 2023, construction estimated to begin fall of 2023**

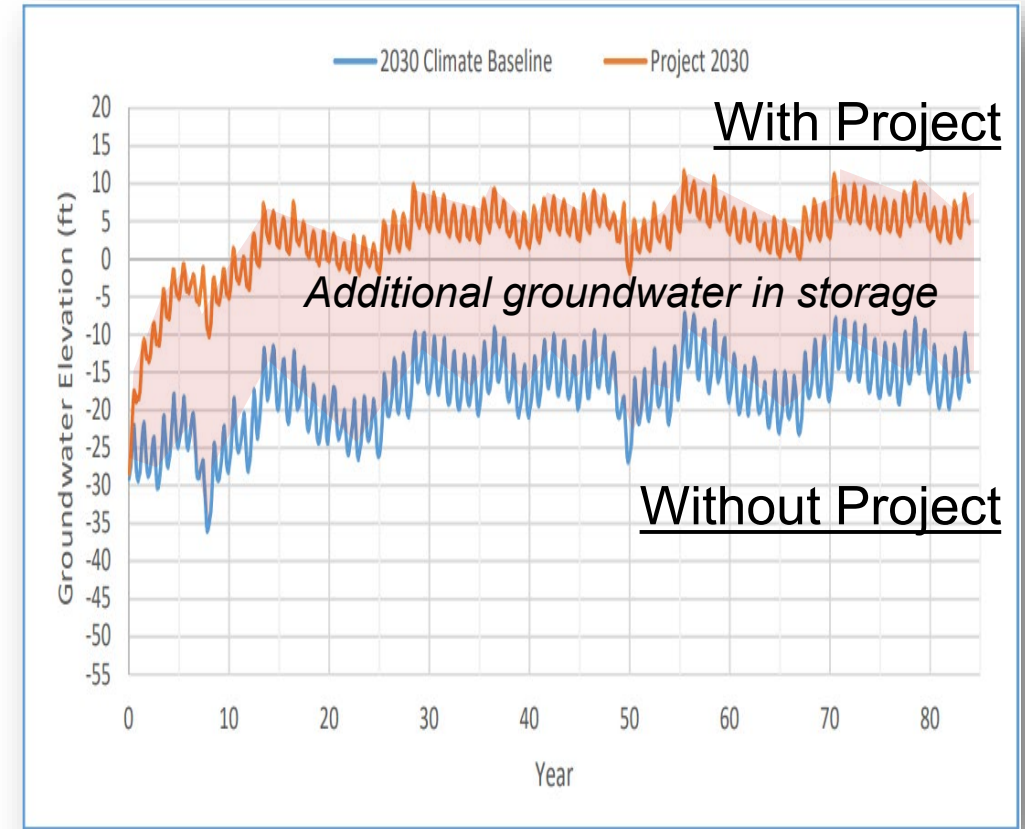
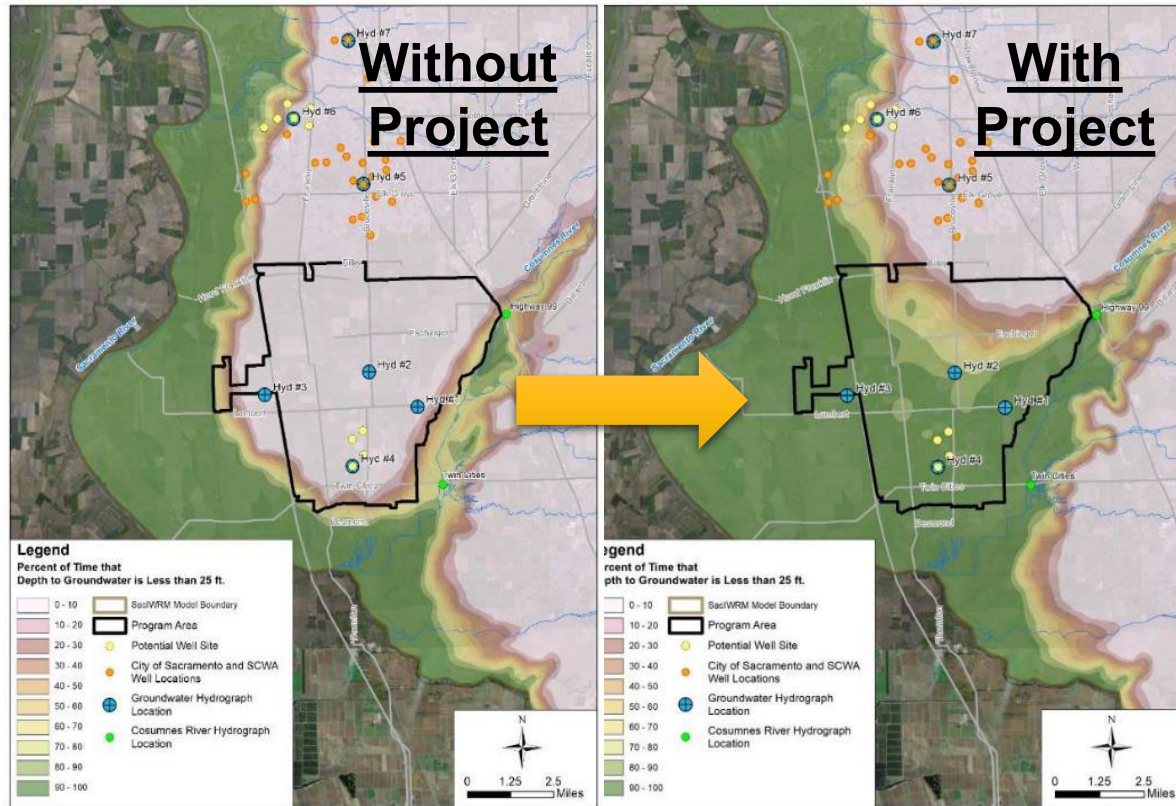


# Harvest Water will Deliver up to 50,000 AFY

- 32,500 AFY during traditional growing season (April to October)
  - Irrigation
  - In-lieu recharge provides passive benefits
- Up to 17,500 AFY during wintertime application (November to March)
  - Irrigation
  - Sandhill crane habitat
  - Active land management activities

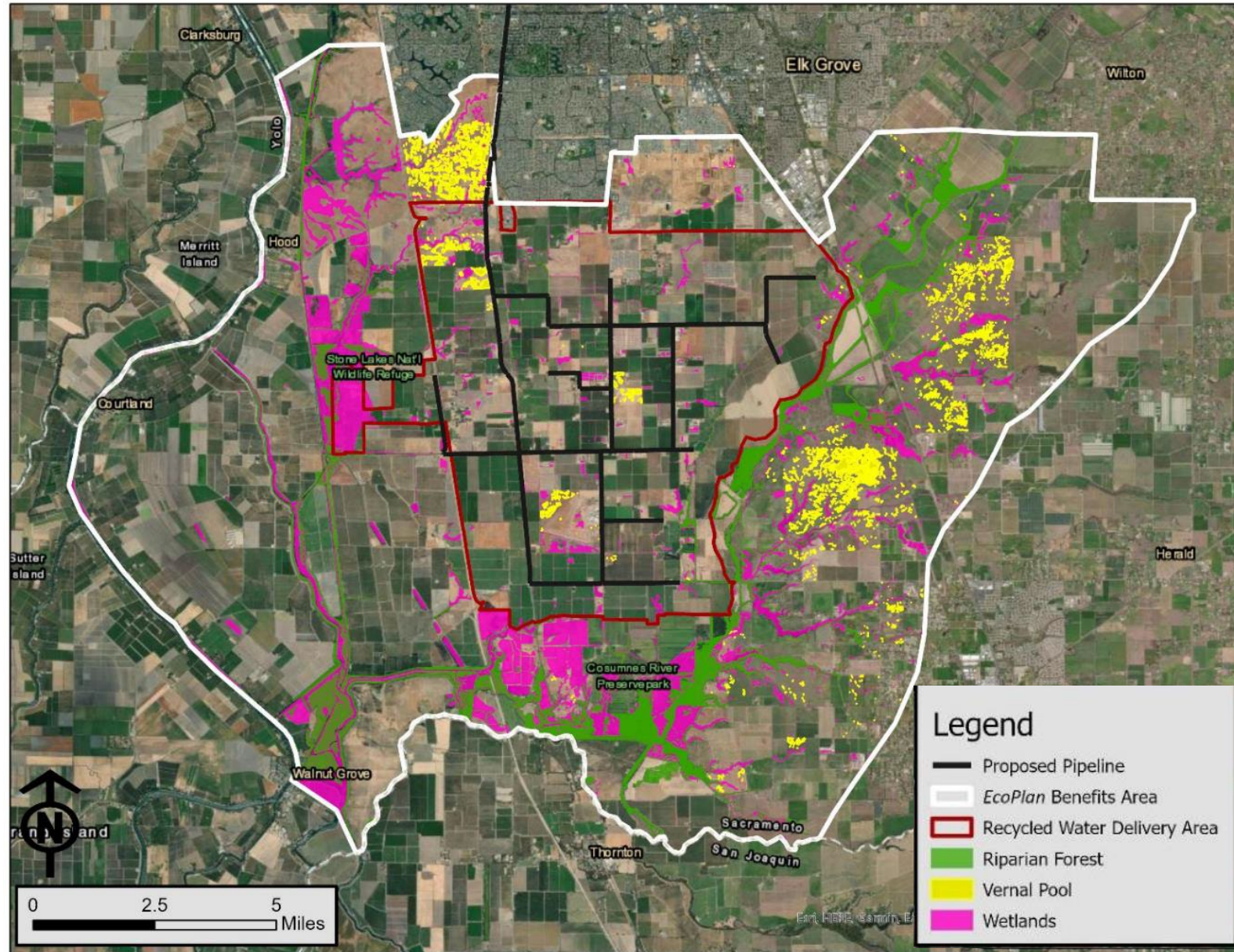


# Recycled Water In-lieu Recharge Creates Significant Groundwater Benefits





# Groundwater and Ecosystem Improvements Extend Beyond Recycled Water Delivery Area





# Recap of Ecosystem and Water Quality Improvements



Additional 3,500 acres of Sandhill crane habitat, which could support up to 700 additional individuals



Additional 353 acres of vernal complex habitat, which supports many listed species



Longer migration window for Fall-run Chinook salmon due to increased streamflow volume in the Cosumnes River

Improved groundwater conditions and water delivery improves 5,000 acres of wetlands & riparian forests, including BLM/FWS lands



Reduced salinity load to Sacramento & Delta waterways

# Additional Benefits

- ◆ ***Emergency fire response*** – provides water for firefighting, reducing response times and minimizing property damage and injuries
- ◆ ***Sustainable Groundwater Management Act (SGMA) goals*** – Harvest Water is a key near-term objective of the South American Subbasin Groundwater Sustainability Plan
- ◆ ***Farmland and open space protection*** – supports conservation easements, provides a reliable water supply and enhances and protects open space
- ◆ ***One Water approach*** – provides a local water supply and effluent discharge diversification for Regional San customers

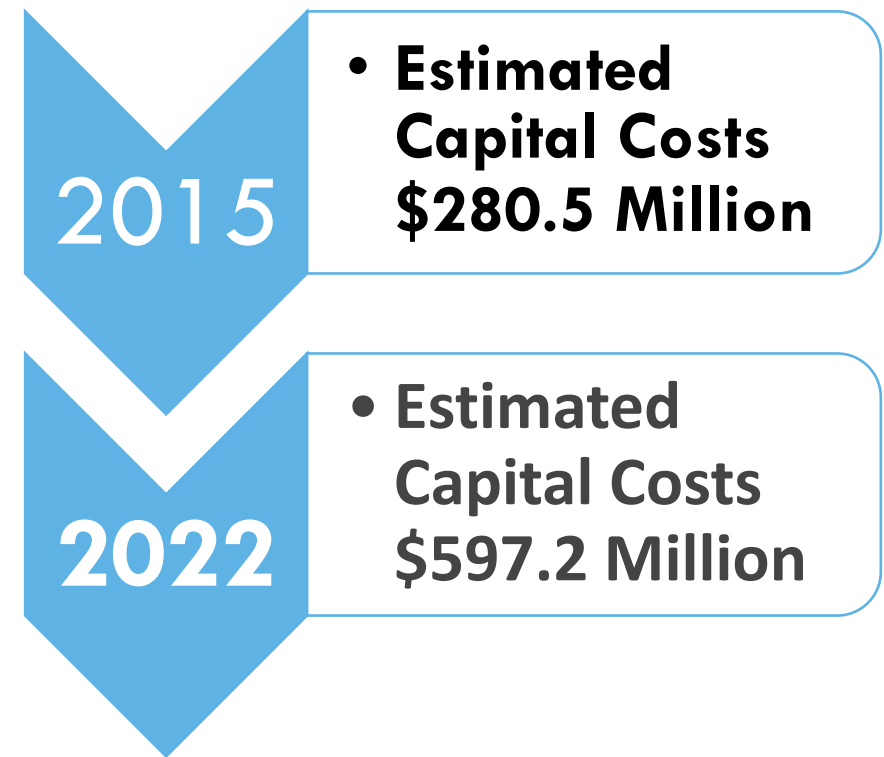


# Harvest Water is Fundamentally the Same as the 2018 WSIP Application

- ◆ Program goal is to still deliver up to 50,000 AFY of recycled water
- ◆ Incorporated a 10-year ramp-up to connect customers, enroll habitat lands and achieve full recycled water deliveries
- ◆ Incorporated cutbacks required by water rights during dry and critically dry years during first 25 years or so
- ◆ Public benefits are largely the same (ecosystem and water quality)

# What has Changed Since 2018 WSIP Application

- There has been significant inflation and cost escalation impacts to land values, construction costs, labor, materials and services between 2015 and 2022
  - CPI has increased by 29.1%
  - USBR CCT increased by 38.3%
  - USDA land values have increased by 44.2%
- System size has increased from 70 mgd to 100 mgd due to increased demand projections and level of service
- Those impacts have significantly affected both Project costs and value of public benefits**



# Updated Program Budget Estimate and Funding

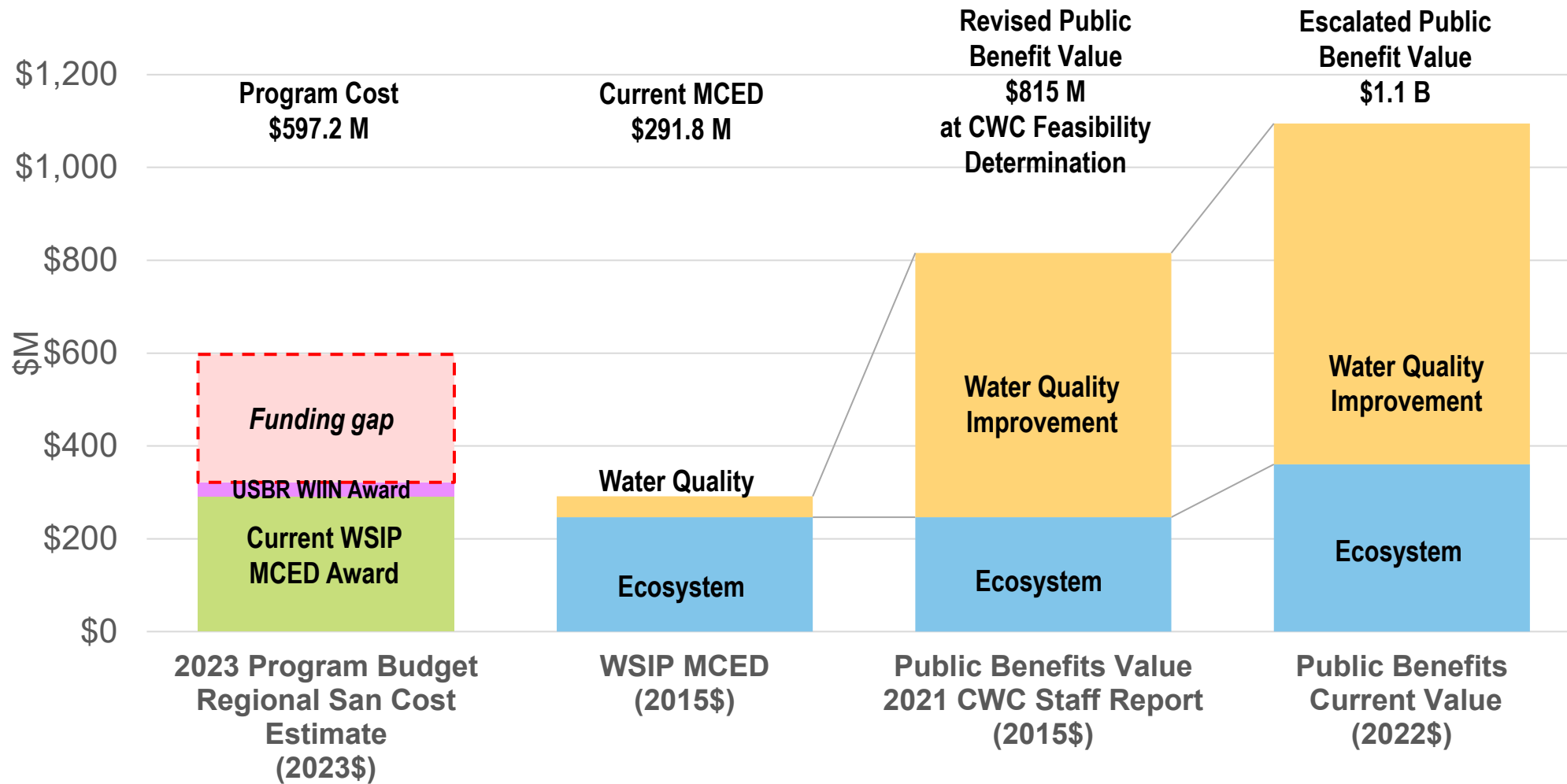
Project Cost Category	\$M, 2015	\$M, 2023
Infrastructure Construction, Contingency, & Implementation	\$216.9	\$511.0
Ecological Program	\$54.2	\$74.5
Ecological Monitoring	\$7.1	\$8.5
Governance, Contracting, Legal	\$0.5	\$1.5
Groundwater Accounting	\$1.8	\$1.8
<b>TOTAL</b>	<b>\$280.5</b>	<b>\$597.2</b>

Anticipated Funding	\$M
WSIP Grant	\$291.8
USBR WIIN Grant	\$30.0
<b>Potential Grant Funding to Date</b>	<b>\$321.8</b>

Current funding gap approximately \$275M 

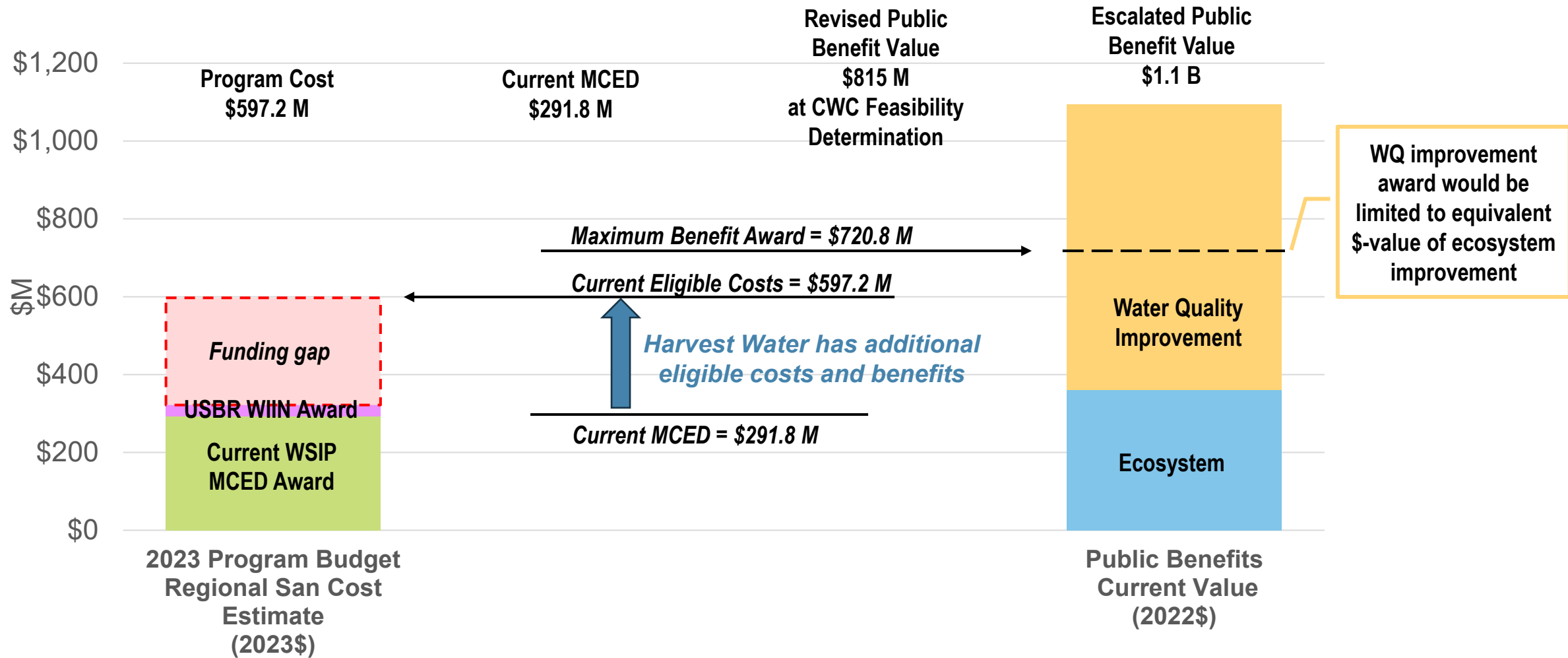


# Public Benefit Value of Harvest Water has increased since 2015



\* See Final Funding Hearing Request posted on Harvest Water WSIP webpage for additional information on benefit monetization.

# Public Benefit Value of Harvest Water has increased since 2015



\* See Final Funding Hearing Request posted on Harvest Water WSIP webpage for additional information on benefit monetization.

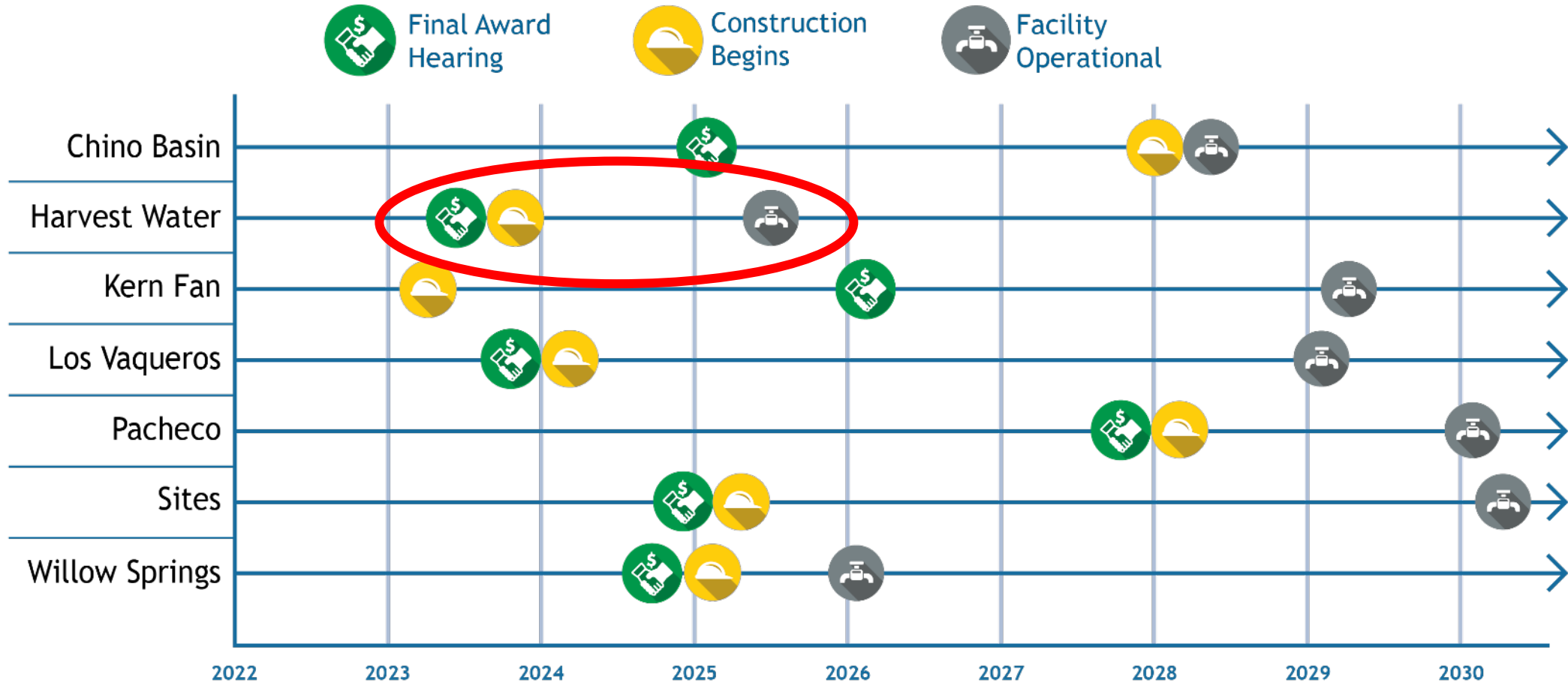
# Future WSIP Funding & Value of Public Benefits

- ◆ Inflation adjustments have been included in Governor's budget proposals and are being considered in SB 867
- ◆ As a conjunctive use project, up to 100% of eligible costs are eligible for WSIP funding
- ◆ Current value of Harvest Water benefits range between \$415.7 Million and \$1.1 Billion, which greatly exceeds the current MCED
- ◆ Maximum funding should be the lesser of the capital cost or double the ecosystem benefit
- ◆ Request Commission affirm and resolve that Harvest Water continues to be eligible for future WSIP allocations and MCED adjustments





# Harvest Water is on Target to Begin Construction this Year!



# Questions?

Contact Info:

Terrie Mitchell,  
Manager of Legislative & Regulatory Affairs  
And Harvest Water A-PMO

[MitchellT@sacsewer.com](mailto:MitchellT@sacsewer.com)

916-876-6092

