



# Sustainable Groundwater Management & Groundwater Trading Update

California Department of Water Resources

Source: DWR Pixel



# GSP & Alternative Submittals

- Critically Overdrafted Basin GSPs were initially submitted by January 31, 2020
  - **21 basins/46 GSPs**
- High and Medium Priority GSPs were initially submitted by January 31, 2022
  - **63 basins/65 GSPs**
- **9 Alternative Periodic Evaluations** were submitted by January 1, 2022
- On an ongoing basis, updated plans are submitted to DWR every 5 years for Periodic Review & Evaluation

*Please visit the SGMA Portal to find submitted Plans, Public Comments, and DWR Assessments:*  
<https://sgma.water.ca.gov/portal/>

**30  
Basins**

# Approved Plan Determinations

## APPROVED BASINS:

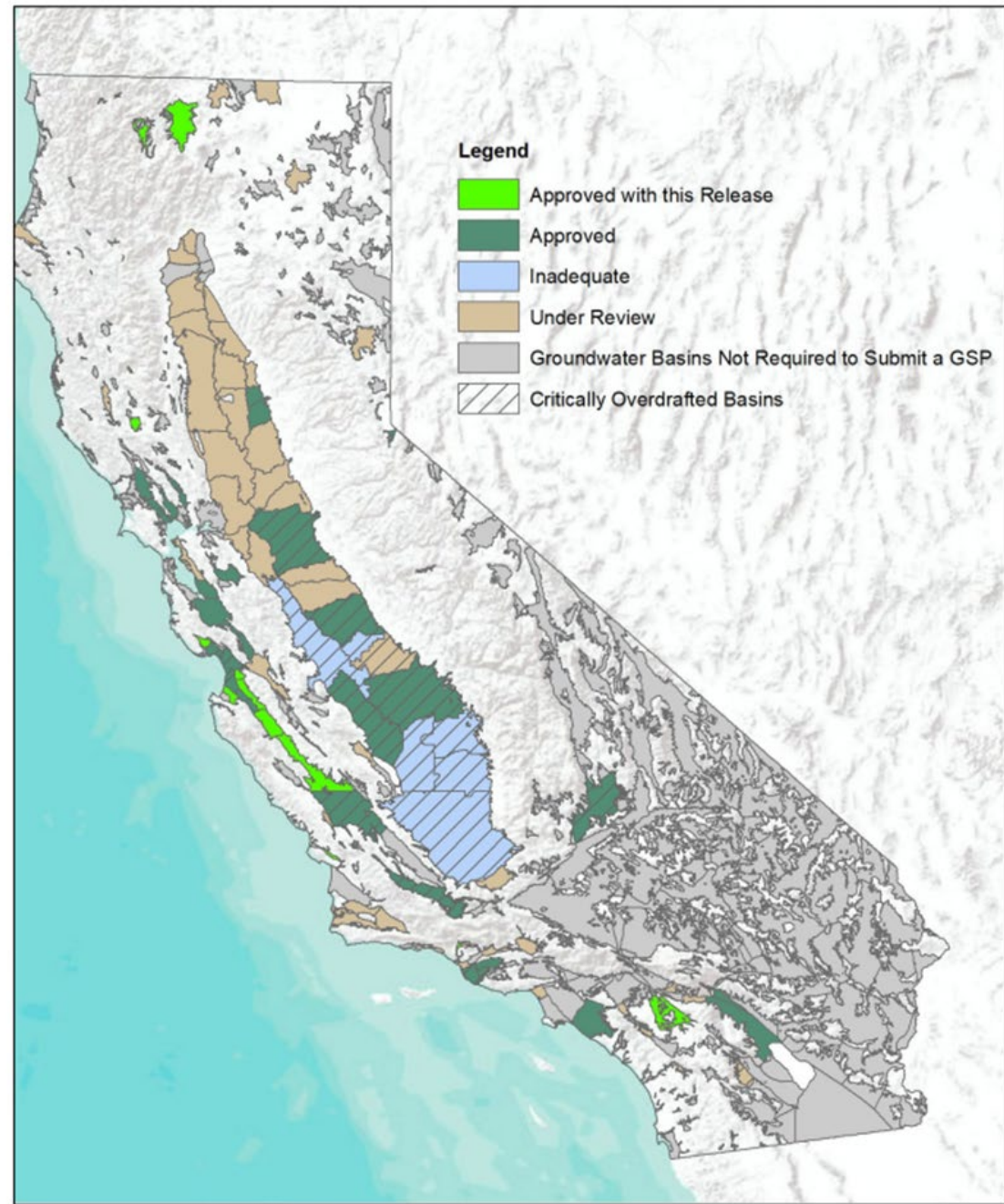
- |                                  |                                   |
|----------------------------------|-----------------------------------|
| 1. Santa Cruz Mid-County Basin   | 21. Big Valley Basin              |
| 2. 180/400 Foot Aquifer Subbasin | 22. East Side Aquifer Subbasin    |
| 3. North Yuba Subbasin           | 23. Forebay Aquifer Subbasin      |
| 4. South Yuba Subbasin           | 24. Langley Area Subbasin         |
| 5. Oxnard Basin                  | 25. Monterey Subbasin             |
| 6. Pleasant Valley Subbasin      | 26. Upper Valley Aquifer Subbasin |
| 7. Las Posas Basin               | 27. San Luis Obispo Valley Basin  |
| 8. Indian Wells Valley Basin     | 28. Santa Margarita Basin         |
| 9. Sonoma Valley Subbasin        | 29. Upper Ventura River Subbasin  |
| 10. Petaluma Valley Basin        | 30. San Jacinto Basin             |
| 11. Napa Valley Subbasin         |                                   |
| 12. Santa Rosa Plains Subbasin   |                                   |
| 13. Eastern San Joaquin Subbasin |                                   |
| 14. Merced Subbasin              |                                   |
| 15. Paso Robles Subbasin         |                                   |
| 16. Cuyama Basin                 |                                   |
| 17. Westside Subbasin            |                                   |
| 18. Kings Subbasin*              |                                   |
| 19. Shasta Valley Basin          |                                   |
| 20. Scott River Valley Basin     |                                   |

\*Multi-Plan Basin

## APPROVED ALTERNATIVES:

1. Niles Cone Subbasin
2. Indio Subbasin
3. Mission Creek Subbasin
4. Pajaro Valley Subbasin
5. Santa Clara Subbasin
6. Llagas Area Subbasin
7. Tahoe South Subbasin
8. Coastal Plain of Orange County Basin
9. Livermore Valley Basin

**9  
Basins**



Note: Map updated with latest April 27, 2023 Approved basins

# Non-Approved Plan Determinations

**6**  
Basins

## INADEQUATE BASINS:

1. Chowchilla Subbasin
2. Tulare Lake Subbasin
3. Delta Mendota Subbasin\*
4. Kaweah Subbasin\*
5. Tule Subbasin\*
6. Kern Subbasin\*

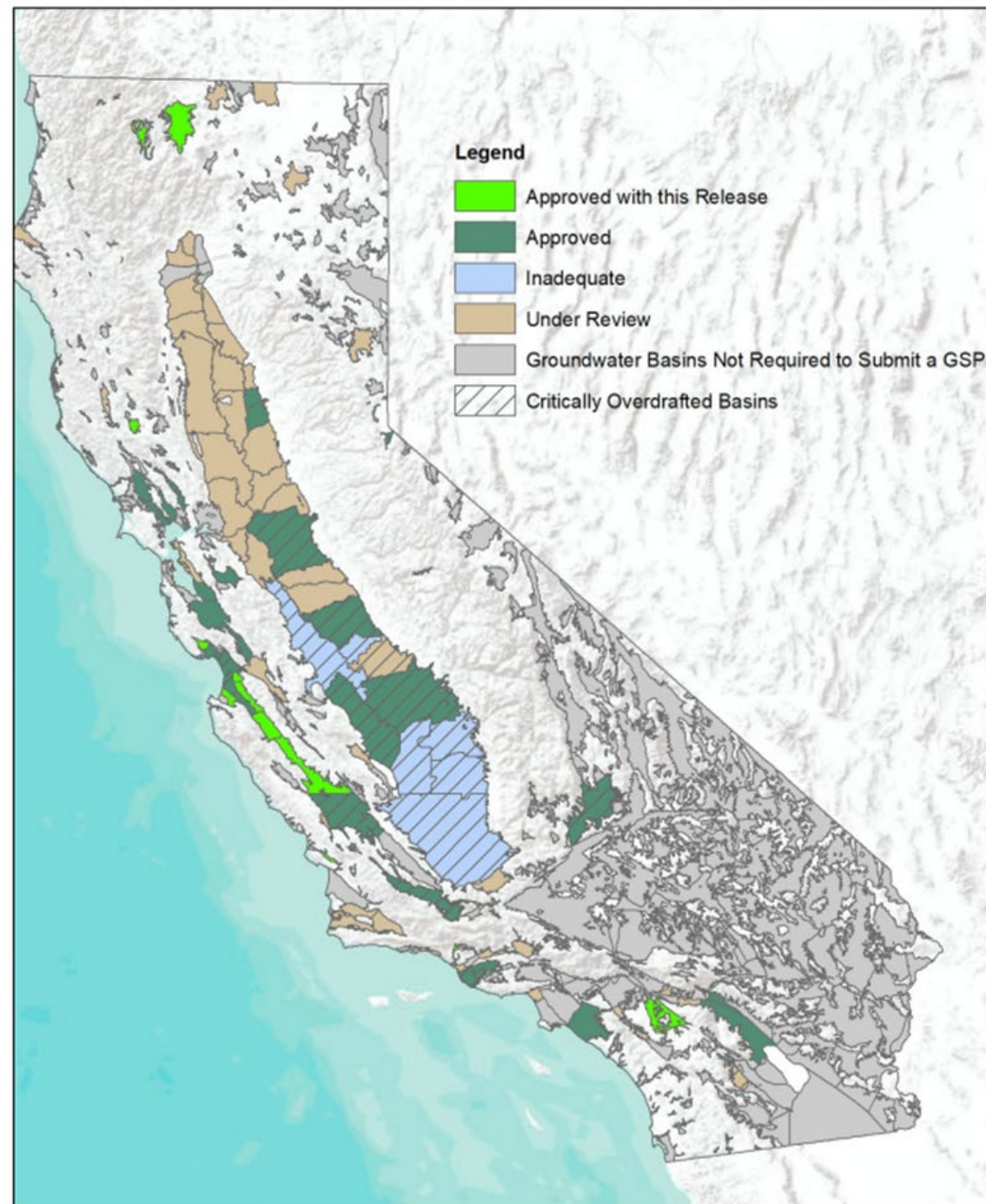
**1**  
Basin

## INCOMPLETE BASIN

(180 days to address deficiencies):

7. Madera Subbasin\*

*\*Multi-Plan Basins*



# Sustainable Groundwater Management Assistance

## *Financial Assistance*

- ~\$340M (2021 – 2023)
- Round 1 Awarded May 2022
  - \$150M for COD Basins (~\$7.6M per basin)
- Round 2 Draft Funding Recommendations Announced May 19, 2023
  - 82 applications requesting over \$780M
  - Recommended 31 applications receive a total award of \$187.3M

## *Technical Assistance*

- Monitoring well installation
- Aerial Electromagnetic (AEM) surveys
- Statewide Data including:
  - CalGW Live
  - Reported dry wells
  - Dry well susceptibility
  - Quarterly land subsidence
- Statewide Model Development

## *Planning Assistance*

- Facilitation Services
- Translation Services
- Best Management Practices and Guidance Documents
- Staff Basin Points-of-Contact
- GSA Forums & Webinars

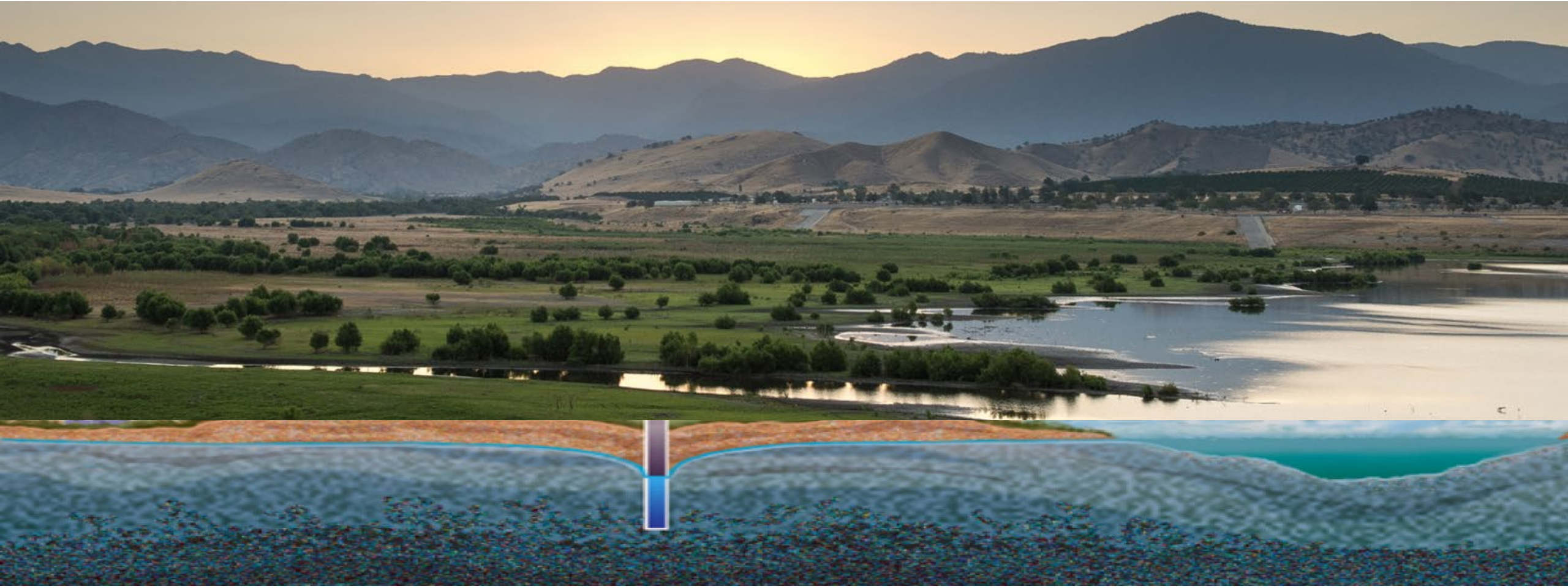
# Next Steps for All Local Agencies: Continue Plan Implementation – 20 Year Timeline

- **Addressing Groundwater Sustainability Plan Corrective Actions**
  - Approved Basins prepare for Periodic Evaluation
  - Respond to State Water Board, if under Intervention
- **Filling Data Gaps & Improvements**
  - Continue modeling, monitoring, and water budgets
  - Continue Submitting Annual Reports to DWR (April 1)
- **Building Local Agency Capacity**
  - Continue implementing grant funding
  - Secure local funding stability & address challenges
- **Advancing Projects and Management Actions**
  - Supply augmentation including groundwater recharge
  - Demand reduction including allocations and groundwater trading



*Ribbon cutting ceremony held by the Fresno Irrigation District for the Savory Pond Expansion project funded by DWR in Fresno, California*

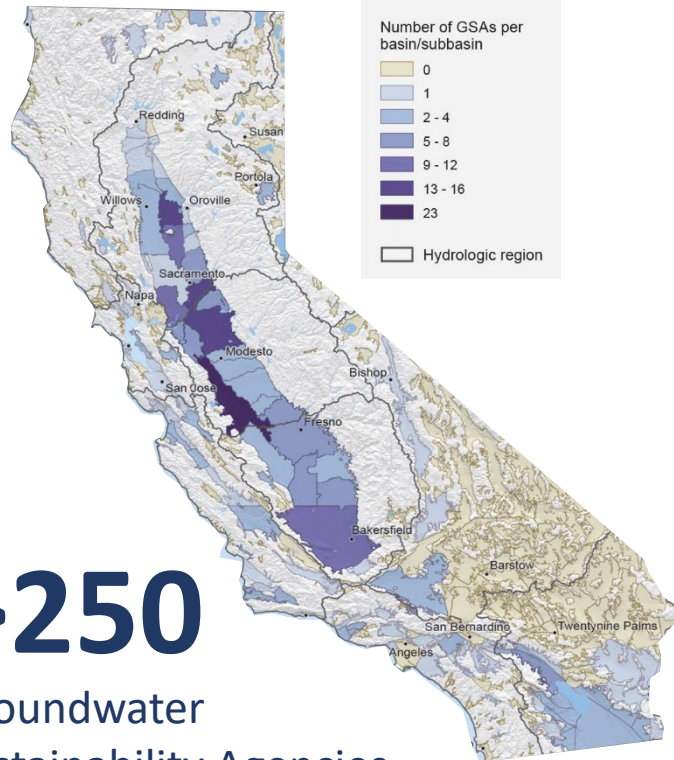
# Groundwater Trading Update



CALIFORNIA DEPARTMENT OF WATER RESOURCES  
SUSTAINABLE GROUNDWATER  
MANAGEMENT OFFICE

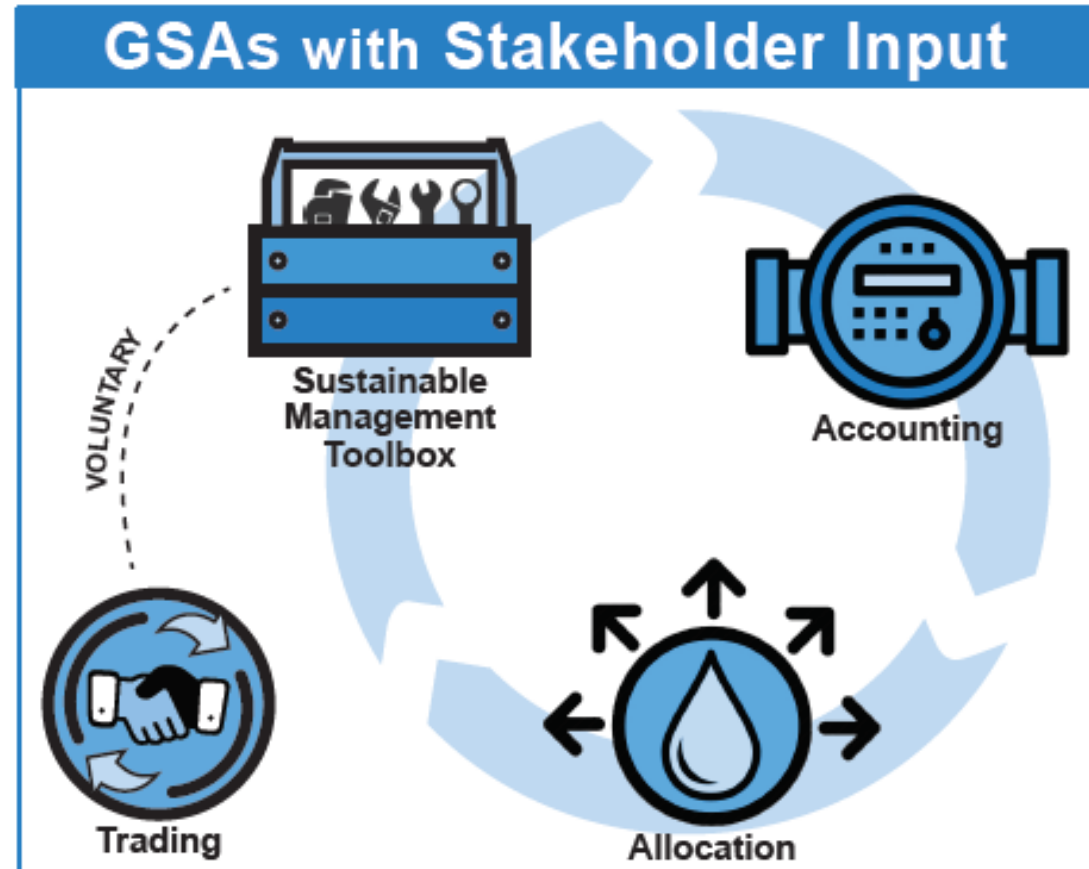
# How Does SGMA Provide a Framework for Water Trading?

## Local Control & Governance



**>250**

Groundwater  
Sustainability Agencies  
Formed by June 30, 2017





# How Does the GSP Provide a Foundation for Water Trading?

## Groundwater Sustainability Plans

### Who

- Administrative Information -

### What

- Basin Setting -

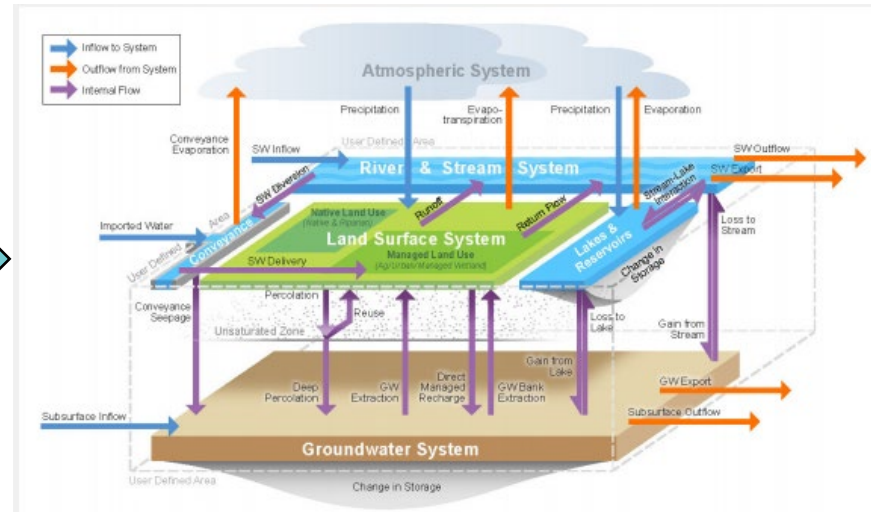
### Where

- Sustainable Management Criteria -  
- Monitoring Network -

### How

- Projects & Management Actions -

**GSP**



Sound Water Budgets  
Transparent Allocations  
Trusted GW Trading

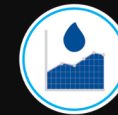
# Recent Activities Supporting Groundwater Trading

- DWR is evaluating all GSPs for how they are managing towards sustainability (**ACTION 2**)
- DWR and SWRCB are supporting the development and application of the Water Accounting Platform led by the CA Water Data Consortium and Environmental Defense Fund
  - Four Pilot Programs: Pajaro, Kern County, Yolo, and Merced Subbasins (**ACTION 4**)
  - DWR hosted the Spring 2023 GSA Forum to spotlight the use of the Accounting Platform (**ACTION 3**)
- DWR is cataloging existing groundwater trading and market activities to centralize available resources (**ACTION 6**)
- DWR anticipates receiving a Budget Request to begin implementing the White Paper actions, starting with the interagency alignment and Work Plan, and engagement of vulnerable users (**ACTION 1, 5**)



## Community engagement

Community education and participation throughout the process are critical.



## Water budget

Determine the amount of surface water and groundwater available.



## Allocations to meet diverse needs

Determine how much of the budget is required to meet community drinking water needs first, and how much water is available to allocate to ecosystems, agricultural and industrial needs.



## Well-designed trading rules

Carefully develop trading rules that ensure protections for water users, the community and ecosystems.



## Flexibility

Incorporate mechanisms that allow for adjustments over time as understanding of basin conditions increases and conditions change.



California Water  
Data Consortium



# Thank You

- For questions, please contact: [SGMPS@water.ca.gov](mailto:SGMPS@water.ca.gov)

