

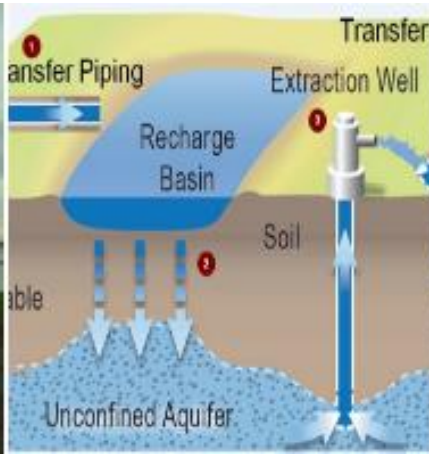


Willow Springs  
Water Bank

# WSWB Conjunctive Use Project

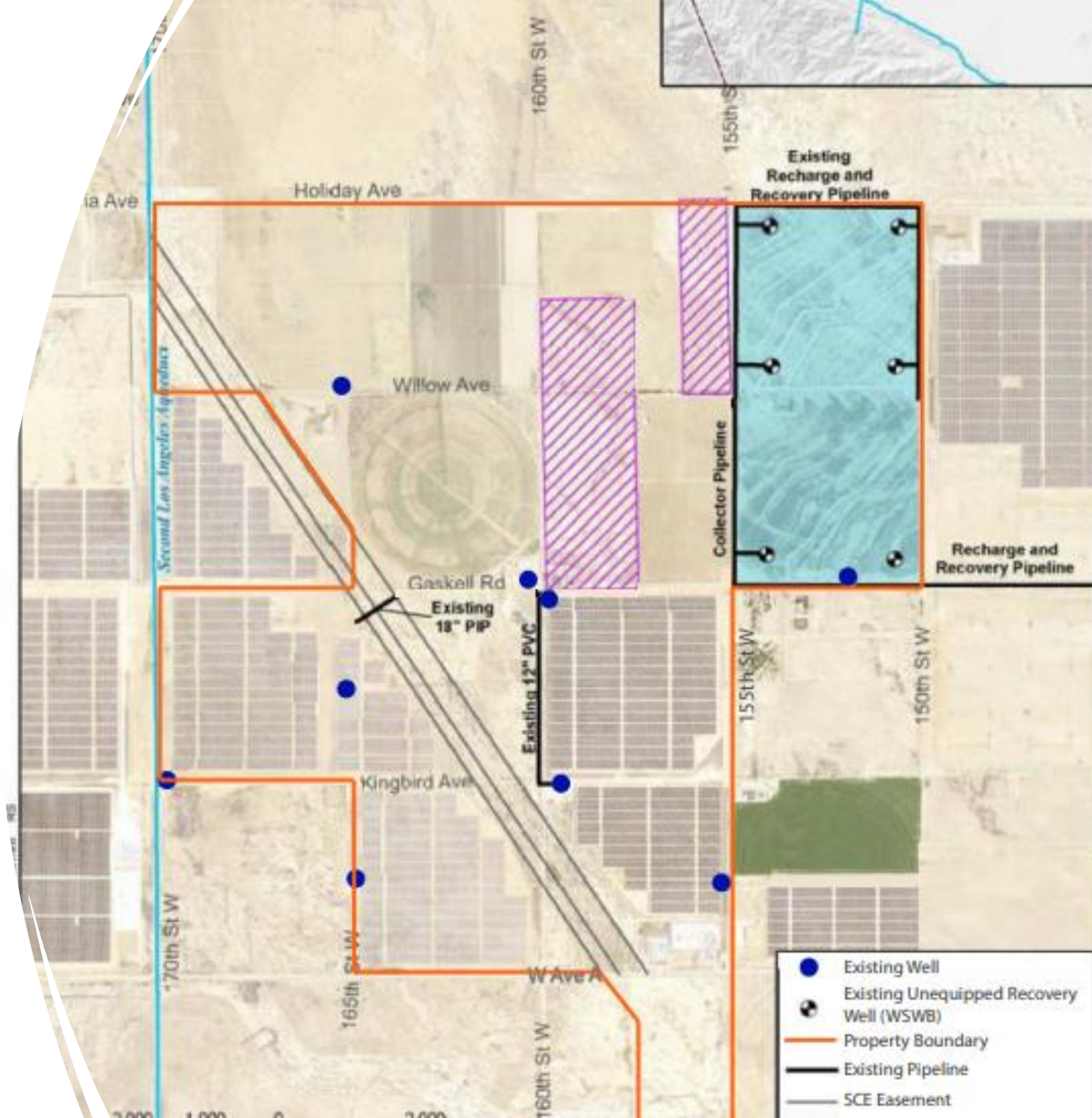
## CWC Presentation

Jennifer Gandin, John Whitt, John A. Pérez, and Mark Ashenfelter  
Willow Springs Water Bank (WSWB)



# Willow Springs Water Bank

- Willow Springs is located south of the Delta and the Tehachapi's near Lancaster and Palmdale;
- Permitted for up to 1 million acre-feet of storage capacity
- Permeable soils, excellent water quality, adjudicated basin
- Existing facilities which have been used for recharge
- Adjudicated basin provides objective management by watermaster



# WSWB Prop 1 Project Public Benefits



Willow Springs  
Water Bank

- **Ecosystem Water Benefit:**

- Water to be released in pulse flows of 28.6 TAF during dry and below normal years to benefit juvenile Chinook
  - Supply an average of 8,880 AF/year water to Feather River
  - Water to be captured through reoperating San Luis Reservoir and stored in an Ecosystem Benefit Account

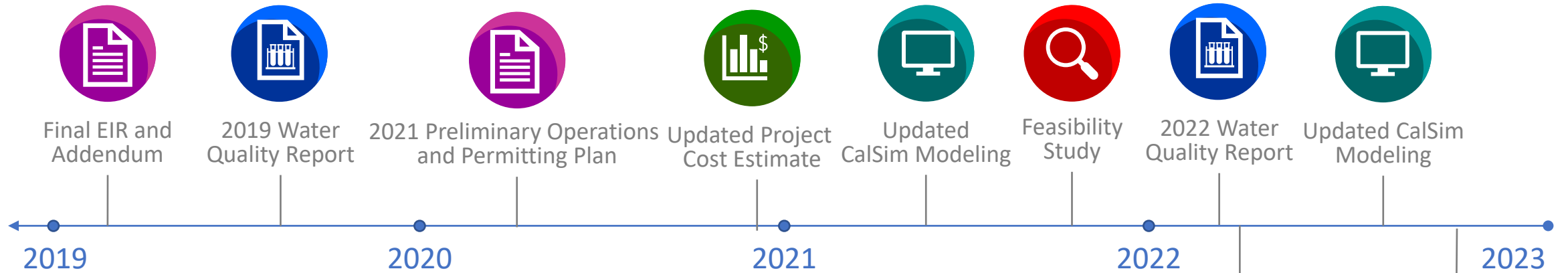
- **Emergency Water Storage:**

- Provides 215 TAF of emergency water storage for communities along the California Aqueduct for use during future Delta water supply failures
  - New wells and pipelines to be built for extracting and delivering the water to communities



Chronicle / Frederic Larson

# Project Progress Update



## Early Funding

- **Approved:** \$6,413,744 (5%)
- **Spend-to-date (Q1 '23):** \$2,338,471

Coordination with Resource Agencies for Public Benefit Contracts

Coordination on Pulse Flow CEQA Supplement

Progress Reports

Scheduling and Invoicing

ONGOING

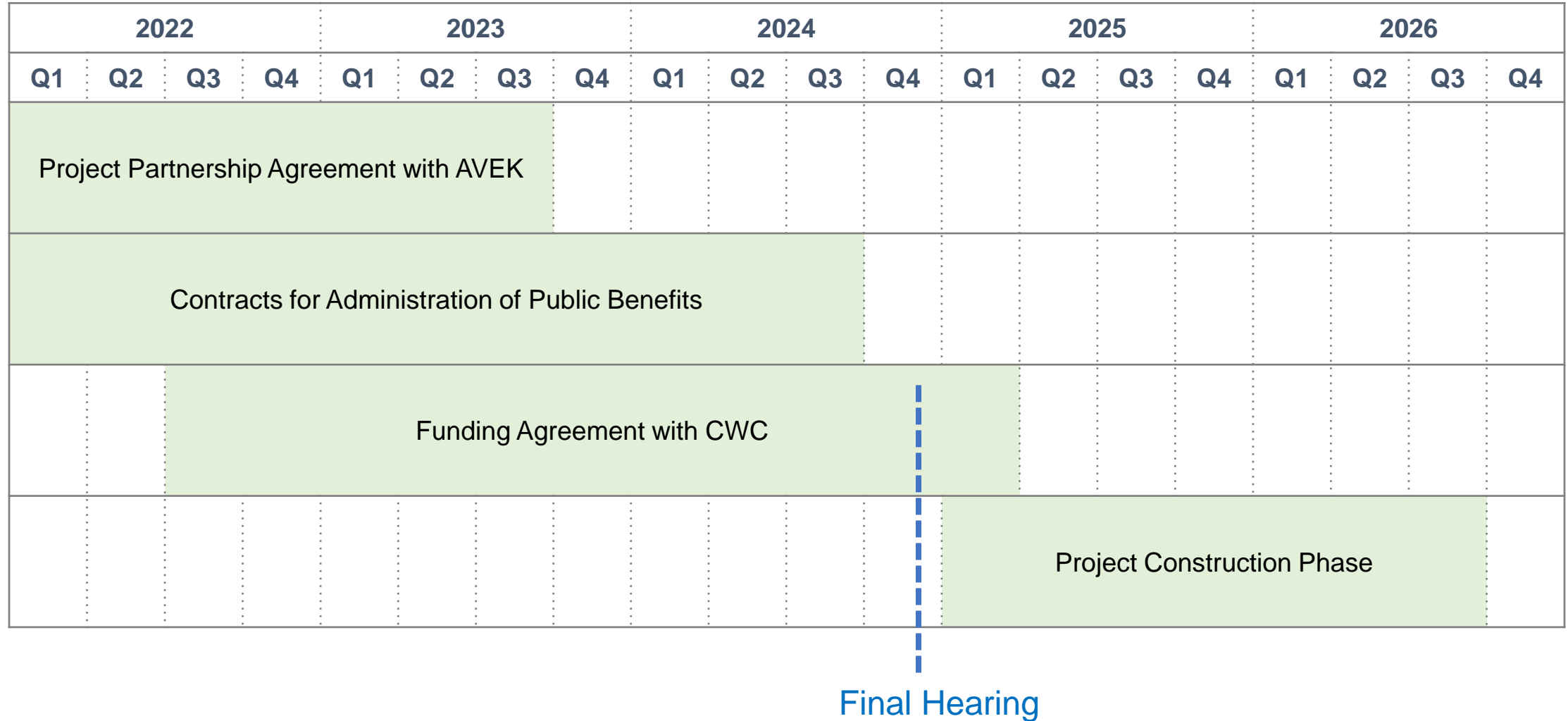
San Luis Conjunctive Operations Plan for Ecosystem Benefits

Emergency Response Operations Plan Draft

# Project Schedule



Willow Springs  
Water Bank



# Status of Contractor Negotiations



Willow Springs  
Water Bank

- 2018 Proposal to develop Prop 1 project with standalone WSWB Facilities
- 2021 AVEK signs WSWB Support Letter during Feasibility Study
- 2022 Aligning separate objectives of project partners
- 2023 Working towards joint project implementation and operations model
  - Basic framework agreed for implementing the Prop 1 project
  - Joint development of AVEK and WSWB facilities for delivering Prop 1 benefits
  - Working through operational constraints and final infrastructure configurations
  - AVEK to engage with resource agencies on public benefit agreements
  - Optimizing use of Prop 1 early funding with AVEK to facilitate delivery of their constituent elements