

The background features a light gray gradient with several realistic water droplets and bubbles of various sizes scattered across the surface. The droplets have highlights and shadows, giving them a three-dimensional appearance.

TRIANGLE T WATER DISTRICT AND CITY OF HURON FLOOD DIVERSIONS

SARAH WOOLF

PRESIDENT WATER WISE

A WATER MANAGEMENT CONSULTANT

INTRODUCTION

GOAL OF THIS PRESENTATION IS TO PROVIDE INFORMATION ON ACTUAL PHYSICAL PROJECT LIMITATIONS, DUE TO APPROVED PERMIT CONDITIONS OF USE.

- ENVIRONMENTAL CONDITIONS
 - WATER AVAILABILITY ANALYSIS-HEADWORKS OF THE SAN JOAQUIN RIVER TO THE SACRAMENTO-SAN JOAQUIN RIVER DELTA
 - FISH SCREENS
 - RESTRICTED DIVERSIONS PERIOD
- AVAILABILITY OF FLOW MEASUREMENT DEVICES THAT MEET SENATE BILL (SB) 88

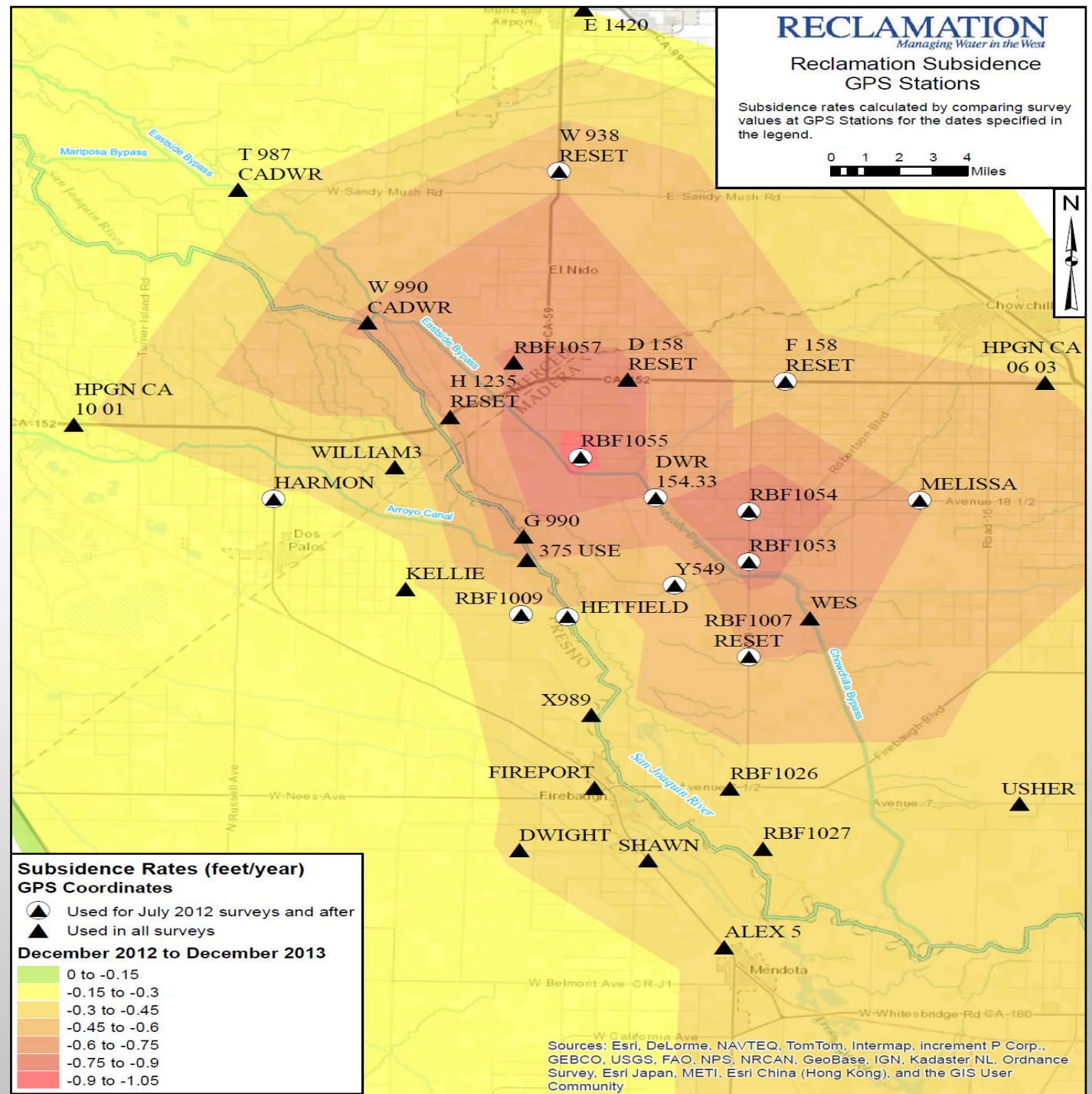
TRIANGLE T WATER DISTRICT (TTWD)

2012

- RED TOP SUBSIDENCE BULLSEYE
- 10,000 AC-FT OVERDRAFT ANNUALLY ON 25,000 ACRES

2012 – 2017

- 500 ACRES FALLOWED
- FORMATION OF TRIANGLE T WATER DISTRICT FOR PURPOSES OF OBTAINING A SURFACE WATER SUPPLY
- DISTRIBUTION SYSTEM IN PLACE TO DELIVER SURFACE WATER TO OVER 15,000 ACRES



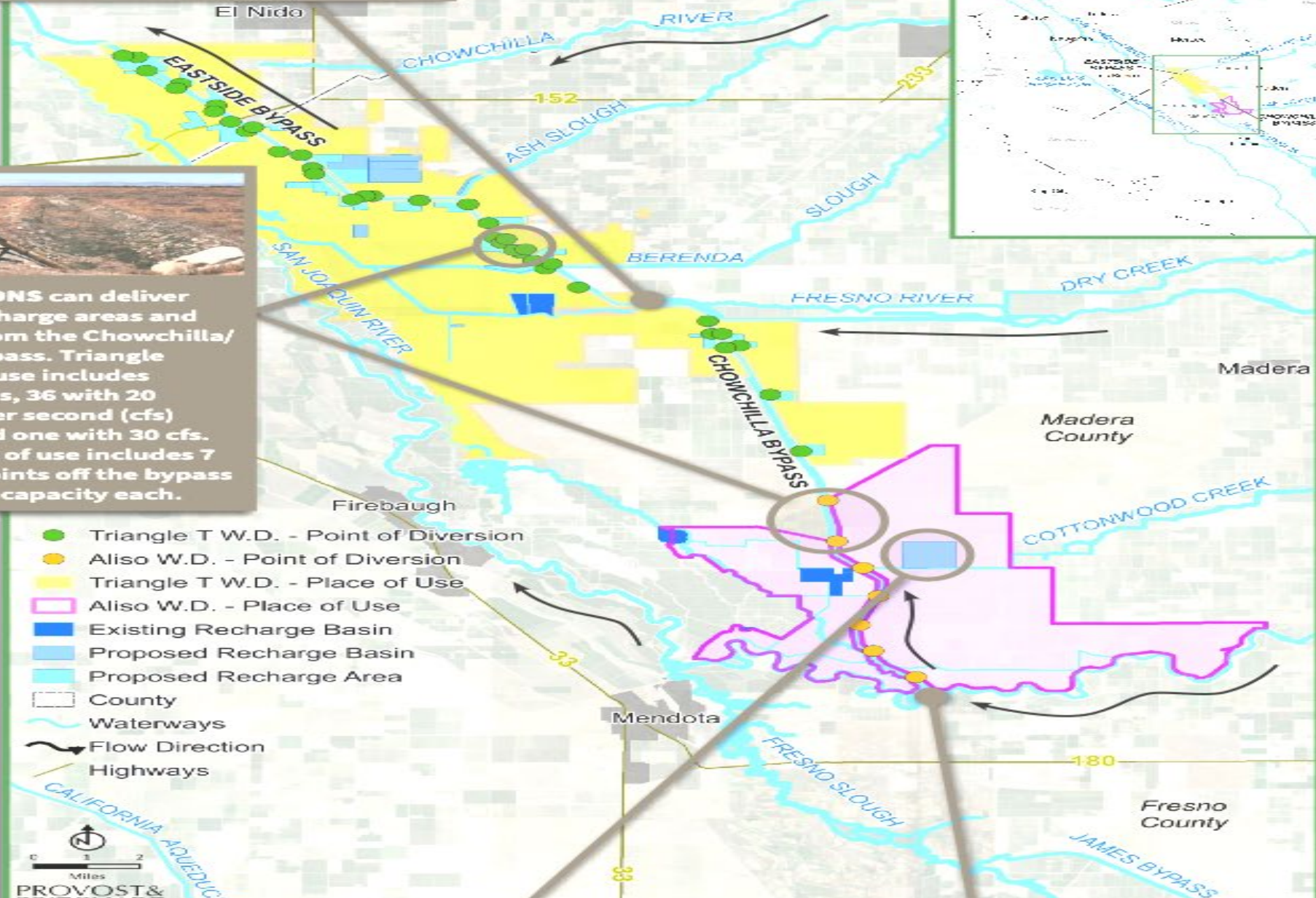
PERMITS: STANDARD, TEMPORARY, STREAMLINED

- TTWD/ALISO WD STANDARD PERMIT – 44 POINTS OF DIVERSION – SUBMITTED IN 2019; OVER \$600,000
 - ENVIRONMENTAL REVIEW NEEDED
 - WATER AVAILABILITY ANALYSIS NEEDED, FROM HEADWORKS OF SAN JOAQUIN RIVER TO DELTA
- TTWD/ALISO WD TEMPORARY 180-DAY PERMIT – 44 POINTS OF DIVERSION
 - 3 PERMITS APPROVED
 - NEVER ABLE TO UTILIZE THE TEMPORARY PERMITS DUE TO CONDITIONS OF USE, SUCH AS FISH SCREENS, MONITORING SITES IN BYPASS, HOURLY METER READS COMPLIANT WITH SB88, LIMITED MONTHS OF DIVERSION (JAN – MARCH)
- TTWD/ALISO WD EO-N-4-23 STREAMLINED PERMIT – APPROXIMATELY 40 POINTS OF DIVERSION BEING UTILIZED WITH TEMPORARY PUMPS POSSIBLY DIVERTING 1,000 CFS/DAY

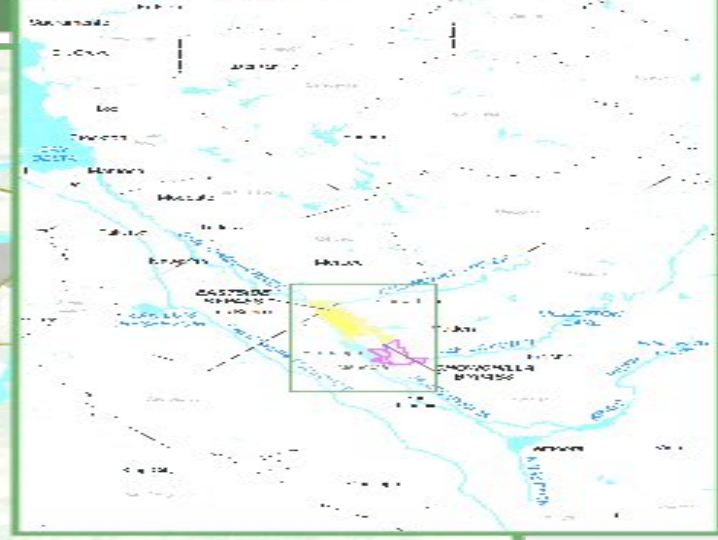
The Chowchilla/Eastside Bypass is a single channel. The bypass changes name from Chowchilla Bypass to EASTSIDE BYPASS where the Fresno River intersects with the channel.



44 DIVERSIONS can deliver water to recharge areas and farmland from the Chowchilla/Eastside Bypass. Triangle T's place of use includes 37 diversions, 36 with 20 cubic feet per second (cfs) capacity and one with 30 cfs. Aliso's place of use includes 7 diversion points off the bypass with 100 cfs capacity each.



- Triangle T W.D. - Point of Diversion
- Aliso W.D. - Point of Diversion
- Triangle T W.D. - Place of Use
- Aliso W.D. - Place of Use
- Existing Recharge Basin
- Proposed Recharge Basin
- Proposed Recharge Area
- County
- ~ Waterways
- Flow Direction
- Highways



DAMAGE ON THE EASTSIDE BYPASS DUE TO HIGH FLOWS



TEMPORARY DIVERSION PUMP



ARROYO PASAJERO MUTUAL WATER COMPANY AND THE CITY OF HURON

- RECHARGE PROJECT AT TERMINUS OF THE ARROYO PASAJERO CREEK – NO DOWNSTREAM USERS
- PROVIDING RECHARGE FOR AGRICULTURE AND THE DISADVANTAGED COMMUNITY OF HURON
- STANDARD APPROPRIATIVE WATER RIGHT APPLICATION IN 2019
- THREE TEMPORARY 180-DAY PERMITS ALL APPROVED AND UTILIZED
- OPPOSITION FROM LOCAL GSA ON THE TEMPORARY 180-DAY PERMIT
- CONSIDERING THE 5-YEAR STREAMLINED APPLICATION AS AN OPPORTUNITY TO SETTLE THE DISPUTE WITH THE GSA

DWR WESTSIDE DETENTION BASIN ON ARROYO PASAJERO



DWR WESTSIDE DETENTION BASIN ON ARROYO PASAJERO ABOUT TO OVER TOP CALIFORNIA AQUEDUCT BANKS – 2023



DIVERTED WATER-RECHARGE AREA

