

EXTREME HEAT
SAVE POWER 4-9PM
STAY COOL

CALIFORNIA EXTREME HEAT SYMPOSIUM

Tuesday, October 18, 2022 | 9:00 a.m. - 3:30 p.m.

Main Auditorium, California Natural Resources Agency
Headquarters, Sacramento, CA

Table of Contents

- ABOUT THE CALIFORNIA EXTREME HEAT SYMPOSIUM.....2**
- AGENDA3**
- LOCATION AND PARKING7**
- MAP OF FACILITIES9**
- ACCESSIBILITY10**
- WIFI AND ACCESS CODES11**
- LUNCH AND COFFEE BREAK DESTINATIONS12**

California's best climate science projects that every corner of our state will be impacted in years and decades to come by higher average temperatures and more frequent and severe heat waves. Extreme heat threatens public health and safety; economic prosperity; and communities and natural systems. It also poses profoundly disproportionate consequences for the most vulnerable among us. Join California policymakers, State agencies, community leaders, and industry and scientific experts to explore critical topics related to extreme heat and innovative solutions available to address its wide-reaching impacts.

The Symposium follows the April release of California's Extreme Heat Action Plan and \$865 million in California's record investment to advance extreme heat action statewide.

The Symposium aims to inform heat adaptation decision-making and actions across sectors and regions, including implementation of California's Extreme Heat Action Plan and state programs including the Governor's Office of Planning and Research's Extreme Heat and Community Resilience Program. Following the Symposium, a synopsis will be released highlighting key takeaways from the event.

Refreshments & Registration | 8:15 a.m. - 9:00 a.m.

Opening Remarks | 9:00 a.m. - 9:10 a.m.

- **Samuel Assefa**, Director of the California Governor’s Office of Planning and Research
- Opening remarks by **California Governor Gavin Newsom** (pre-recorded)

Panel Discussion | 9:10 a.m. - 9:55 a.m.

Setting the Stage - Understanding the Risk of Extreme Heat to Build Resilience

Climate change is increasing temperatures across the planet and in California. These changes pose risks to every region and sector. This panel will outline heat’s impacts on California’s communities, infrastructure, and the environment to date, what the science tells us is coming, and key gaps in our understanding to build a more heat-resilient future.

- **Wade Crowfoot**, Secretary of the California Natural Resources Agency (Moderator)
- **Dr. David P. Eisenman**, Professor of Medicine and Public Health at David Geffen School of Medicine at UC Los Angeles and Co-Director at UC Los Angeles Fielding School of Public Health, Center for Healthy Climate Solutions (C-Solutions)
- **Dr. Rupa Basu**, Chief of Air and Climate Epidemiology Section at the California Office of Environmental Health Hazard Assessment
- **Dr. Alexander “Sasha” Gershunov**, Research Meteorologist, Climate, Atmospheric Science and Physical Oceanography at UC San Diego Scripps Institution of Oceanography

Panel Discussion | 10:00 a.m. - 10:45 a.m.

Pushed to the Limit - Getting to Grid Reliability in the Era of Extreme Heat

Last month’s severe heat wave impacted communities in every corner of California - pushing the state’s overtaxed electrical grid to the limit - and offering a stark preview of the grid reliability challenges to come amid a warming climate. Join panelists representing the state’s energy agencies, the state’s largest grid operator, an association of publicly-owned load serving entities, and a large water agency to explore how the state can balance the system under pressure, and how longer-term readiness and resilience projects can reduce demands on the grid over time.

- **Dan Jacobson**, Senior Advisor to Environment California (Moderator)
- **Siva Gunda**, Vice-Chair of the California Energy Commission
- **Delphine Hou**, Director of California Regulatory Affairs at California Independent System Operator
- **Dale Roberts**, Principal Engineer at the Sonoma County Water Agency

Panel Discussion | 10:50 a.m. - 11:35 a.m.**Sounding the Alarm - How Awareness Campaigns Keep Communities Safe**

For decades, Californians have mobilized and prepared for extreme heat events. However, as temperatures increase and heatwaves become lengthier, more frequent, and more dangerous, it is critical that communities, especially those most vulnerable, are equipped with information that directly relates to their unique heat risk and available resources. This panel explores how California's extreme heat outreach efforts can reach at-risk populations through partnerships with trusted community partners.

- **Yumi Sera**, Executive Director of the California Office of Community Partnerships and Strategic Communication (Moderator)
- **Dr. John Faust**, Chief of the Community and Environmental Epidemiology Research Branch at the California Office of Environmental Health and Hazard Assessment
- **Brian Ferguson**, Deputy Director of Crisis Communication and Public Affairs at the California Governor's Office of Emergency Services

Lunch Break | 11:35 a.m. - 12:30 p.m.

During the lunch break, be sure to explore the first floor of the new California Natural Resources Agency Headquarters, including the cafeteria and outdoor patio, or order lunch at one of the many small businesses in Sacramento's downtown area. For additional options, a list of local restaurants is included in the Symposium's program.

Keynote Address | 12:30 p.m. - 12:45 p.m.**Legislating for Extreme Heat Response and Long-Term Resilience**

- **Wade Crowfoot**, Secretary of the California Natural Resources Agency
- Keynote Address by **Luz Rivas**, State Assembly Member of California's 39th District

Panel Discussion | 12:50 p.m. - 1:35 p.m.**Nature-Based Climate Solutions – Scaling Lessons Learned to Deliver Heat Action**

Nature-based climate solutions can cool communities and provide additional benefits to Californians such as creating economic opportunity, protecting food and water security, and increasing equitable access to nature. Join this panel to explore emerging challenges and opportunities associated with investing in these solutions, and how inaction can undermine our goal of building an equitable, resilient, and carbon-neutral future.

- **Juan Altamirano**, Director of Government Affairs at the Trust for Public Land (Moderator)
- **John Melvin**, Assistant Deputy Director of Resource Protection and Improvement at CAL FIRE
- **Sara Bernal**, Urban Agriculture Program Lead at the California Department of Food and Agriculture
- **Tracy Quinn**, P.E., CEO and President of Heal the Bay

Panel Discussion | 1:40 p.m. - 2:25 p.m.**Health Equity at the Heart of Extreme Heat Action - Strengthening California's Commitment to Supporting Resilient Communities**

Extreme heat affects everyone, but it doesn't affect everyone equally, with historically disinvested communities at the frontlines of climate change facing the worst of heat's impacts. The recent passage of the Governor's Executive Order mandating state agencies to embed equity within their missions, policies, and programs further points to the need for equity at the heart of the state's work to combat extreme heat. This panel explores strategies for strengthening equitable heat resilience through targeted services and support for groups at disproportionate risk of heat illness and death.

- **Lianne Dillon**, Capitol Collaborative on Race and Equity Co-Lead at the Public Health Institute (Moderator)
- **Natalie Hernandez**, Director of Climate Planning & Resilience at Climate Resolve
- **Heather Riden**, Program Director of the Western Center for Agricultural Health and Safety
- **Rachel Rios**, Executive Director of La Familia Counseling Center

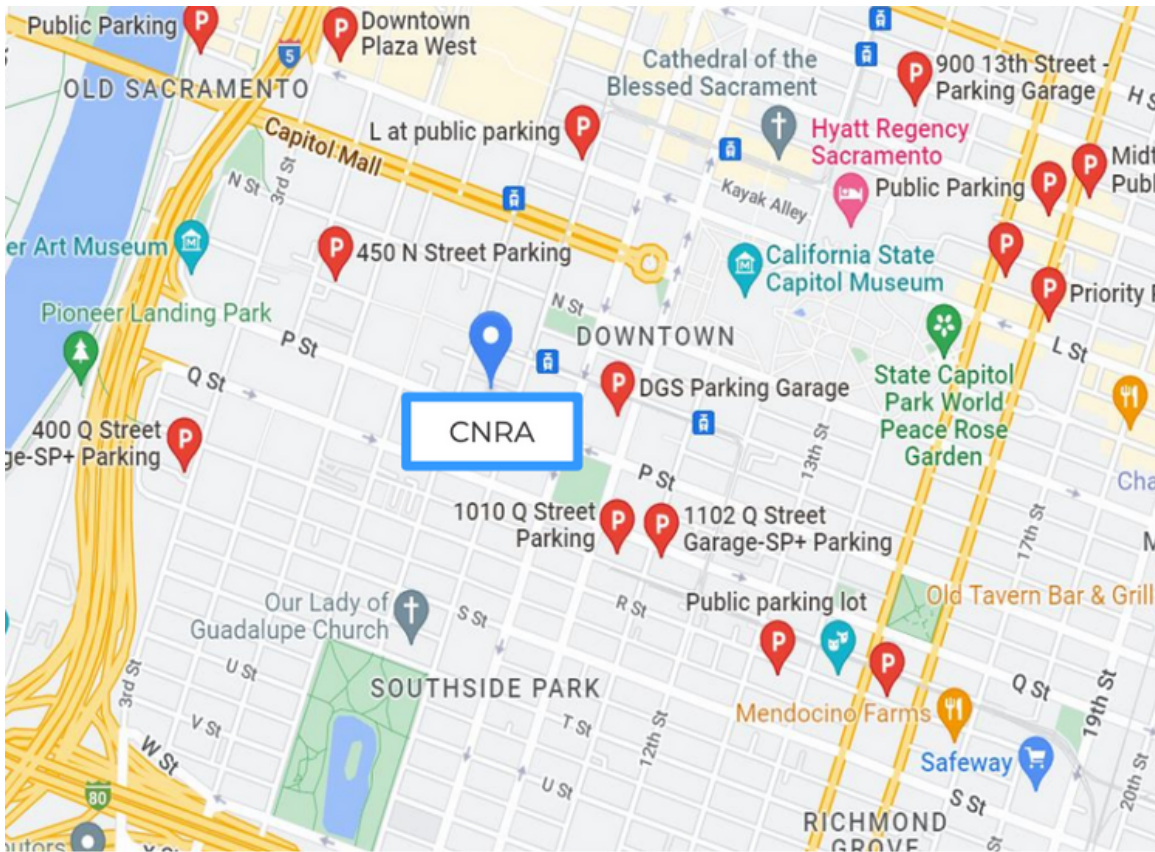
Panel Discussion | 2:30 p.m. - 3:15 p.m.***The Road Ahead - California's Surfaces as a Solution***

Human-made hardscapes, from roads to buildings, radiate heat and exacerbate heat's effects on humans, natural systems, and infrastructure. "Cool" technologies, such as cool pavements, roofs, and walls, are emerging strategies that show signs of promise for turning down the temperature in communities. This panel discusses cool surfaces: how they work, where they've been implemented, and what the opportunities and challenges are moving forward.

- **Jonathan Parfrey**, Founder and Executive Director of Climate Resolve
- **Kristen Torres Pawling**, Sustainability Program Director at the County of Los Angeles Chief Sustainability Office
- **Sarah Schneider**, Deputy Director of the Cool Roof Rating Council
- **Dr. John Harvey**, Principal Investigator at the UC Pavement Research Center at UC Davis

Closing Remarks | 3:20 p.m. - 3:30 p.m.**All Hands on Deck for a Heat-Resilient California for All**

- **Samuel Assefa**, Director of the California Governor's Office of Planning and Research



The California Natural Resources Agency (CNRA) Headquarters is located at 715 P Street, Sacramento, California 95814. The California Extreme Heat Symposium sessions will be held in the 1st Floor Auditorium.

State Parking is available on many streets around the CNRA Building. This parking is metered, and most spots can be paid for through the ParkMobile app.

The following Public Parking Garages are available near the CNRA Building:

Capitol Tower, 1500 17th Street, Sacramento, CA 95814:

- Payment can be made via the ParkMobile app (recommended) or with the machine on the opposite side of the parking booth in front of the Garage. The Garage lower level is a reserved area, and any vehicle without an ePermit parked in that area will receive a citation.
- Daily Rates (6 a.m. – 4:30 p.m.): \$2.25 per 20 minutes; \$20.00 daily maximum charge

DGS Garage – Lot 24, 1500 10th Street, Sacramento, CA 95814:

- Payment can only be made in cash.
- Weekday Rates (5:30 a.m. – 6:30 p.m.): \$1.25 per 20 minutes; \$20.00 daily maximum charge.

400 P Street Garage, 400 P Street, Sacramento, CA 95811:

- Payment can be made via cash, Visa, American Express, Discover, and Mastercard. Attendants/Cashiers on site.
- Weekday Rates (6:00 a.m. – 6:00 p.m.): \$1.25 incremental; \$12.00 daily maximum charge.

Capitol Garage Parking, 1303 10th Street, Sacramento, CA 95814:

- Weekday Rates (6:00 a.m. – 5:00 p.m.): \$1.50 each half hour or fraction thereof; \$25.00 daily maximum charge.

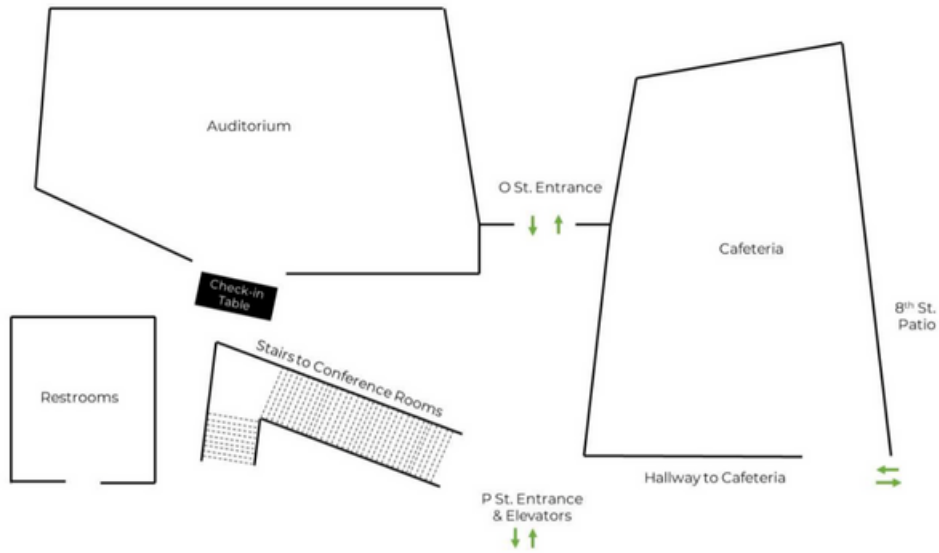
Lot X, 201 N Street, Sacramento, CA 95814:

- Payments can be made via cash, debit card, Master Card, Visa, or by phone.
- Weekday Rate (6:00 a.m. – 4:00 p.m.): \$15.00 flat rate.

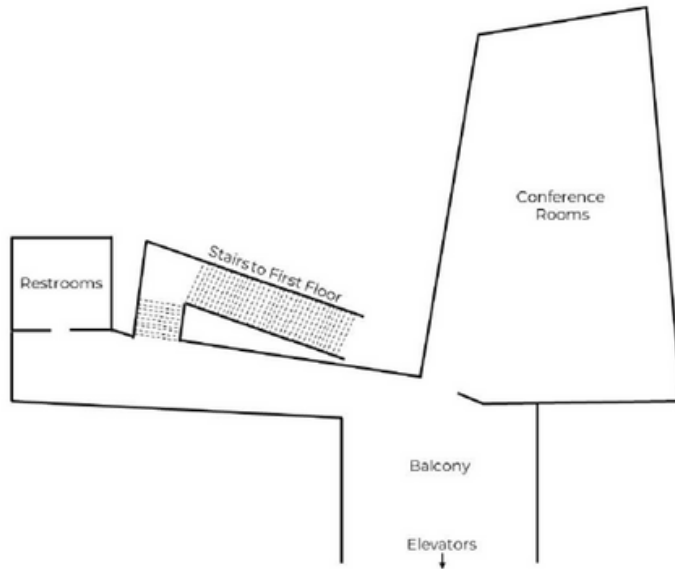
Downtown Public Garage, 725 7th Street, Sacramento, CA 95814:

- Electric Vehicle Charging Station – three Level 1 chargers, nine Level 2 chargers.

CNRA Headquarters Building, Level 1



CNRA Headquarters Building, Level 2



The California Natural Resources Agency and the Governor’s Office of Planning and Research remain steadfast in their goals to promote transparency and public participation. To do so, CNRA and OPR have arranged for multiple options to listen, view, and/or comment during the Extreme Heat Symposium.

The Symposium will be a hybrid event, with both in-person and remote attendance options available to participants. The remote event and in-person event will include Spanish interpretation. Closed captioning will be available for remote participants who join via Zoom.

All entrances to the California Natural Resources Agency Headquarters Building are accessible to all levels of mobility. The registration table, morning refreshments, and all Symposium sessions will be held on the 1st level of the building, which is fully accessible.

If you require a reasonable accommodation to fully participate in this event or would like to request in-person interpretation services, please email Kimberly Arbuckle at Kimberly.arbuckle@resources.ca.gov as soon as possible or connect with the Symposium team at the registration table on the day of the event.

Wifi and Access Codes:

- 2nd Floor Bathroom Code: 13579#
- Attendee Wifi: CNRA Guest

The California Natural Resources Agency Cafeteria can be found on the first floor of the Headquarters building and will be open from 11 a.m. until 2 p.m. In addition to the cafeteria, the following restaurants are within walking distance of the Natural Resources Agency building:

R Street Corridor, R Street, Between 10th & 19th Streets in Sacramento, CA 95814:

- Approximately 0.4-0.9 miles southeast of CNRA Headquarters. Multiple dining options available.

La Bou, 1100 O Street #1, Sacramento, CA 95811:

- Approximately 0.3 miles east of CNRA Headquarters.

Vallejo's, 1100 O Street, Sacramento, CA 95811:

- Approximately 0.3 miles east of CNRA Headquarters.

Yummy Choice, 1601 10th Street, Sacramento, CA 95814:

- Approximately 0.3 miles southeast of CNRA Headquarters.

Downtown Commons / "DOCO", 405 K Street, Sacramento, CA 95814:

- Approximately 0.4 miles north of CNRA Headquarters. Multiple dining options available.

Kim's Vietnamese, 1008 J Street, Sacramento, CA 95814:

- Approximately 0.7 miles north of CNRA Headquarters.

Attendees are welcome to explore the CNRA Headquarters' 1st floor and outdoor patio.

Thank you to Climate Resolve for providing refreshments!

