

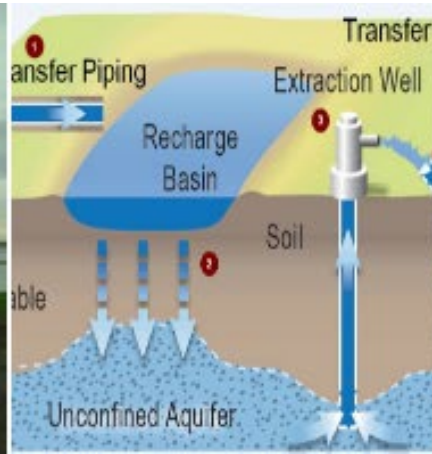


Willow Springs
Water Bank

WSWB Conjunctive Use Project

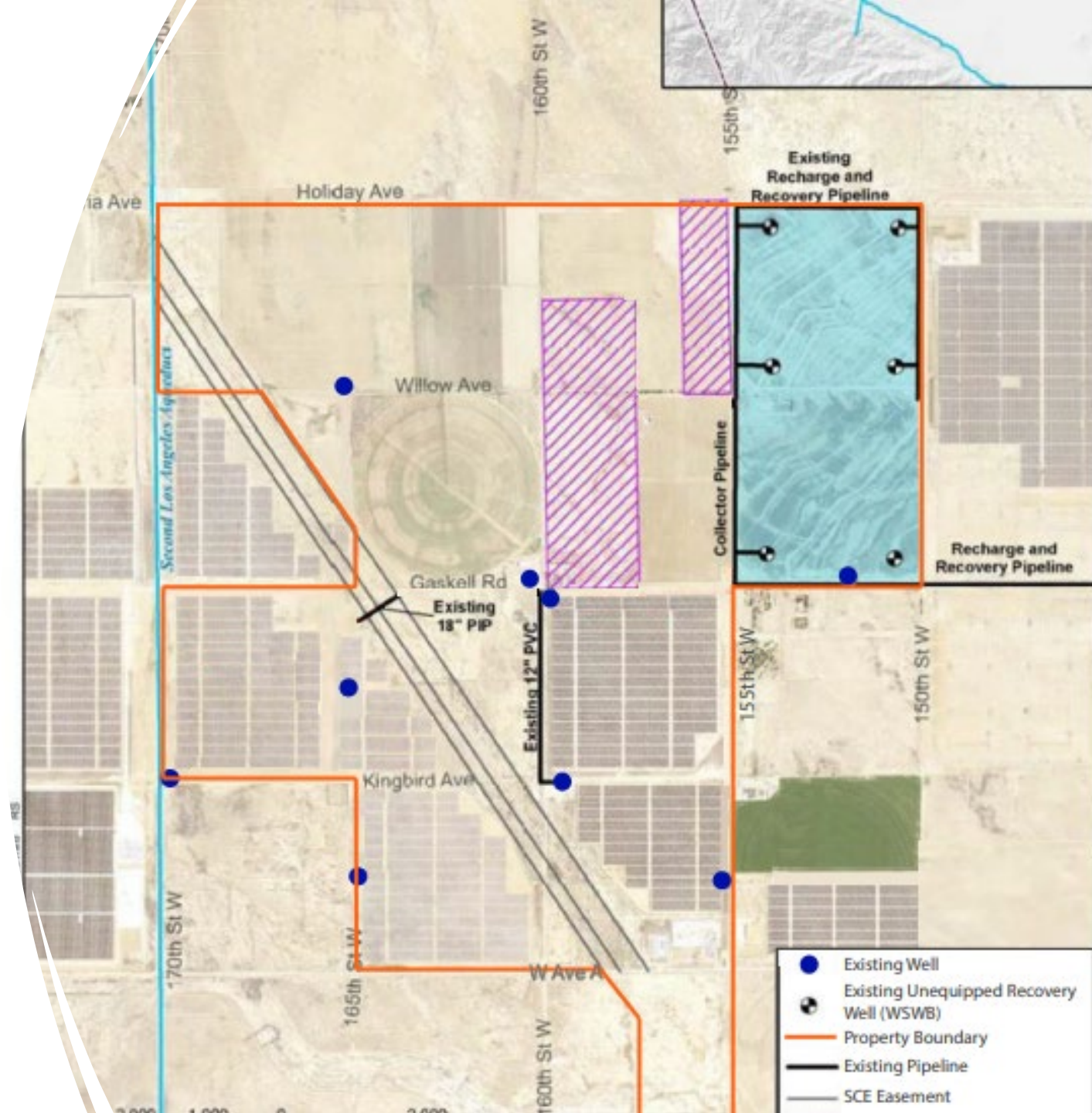
CWC Presentation

Mark Beuhler
General Manager
Willow Springs Water Bank (WSWB)



What is the Project?

- Willow Springs is located south of the Delta near Lancaster and Palmdale;
- 1 million acre-feet of storage
- Permeable soils, excellent water quality, adjudicated basin
- Existing facilities which have been used for recharge
- Adjudicated basin ensures objective management by watermaster

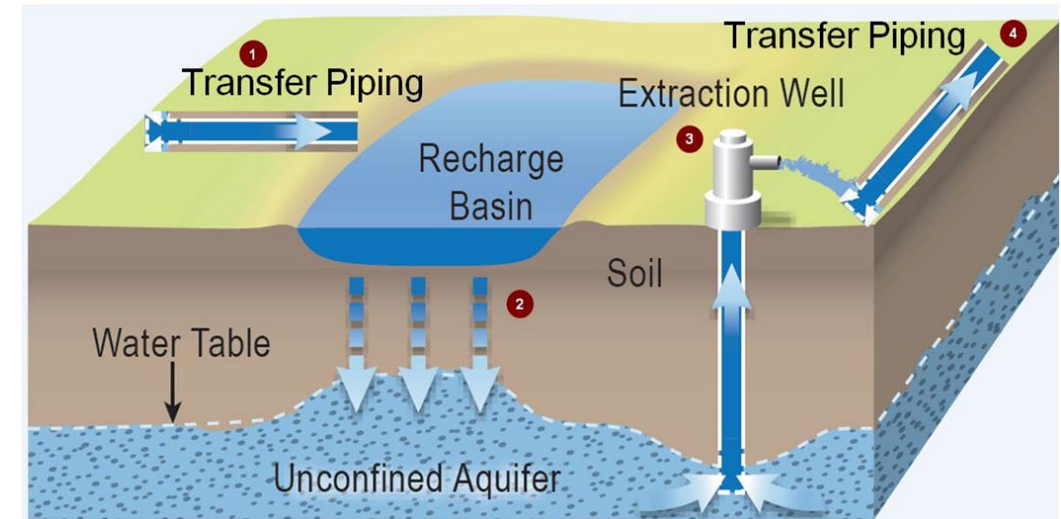


Conceptual Operations



Willow Springs
Water Bank

- **Reducing spills:**
 - San Luis Reservoir spills 1 year in 7
 - Pre-deliver to groundwater where it cannot spill or evaporate
- **Capturing additional water:**
 - Empty space in SLR is used to capture water for ecological benefit exchange
 - Move new ecological water from SLR to WSWB for recharge and multi-year storage
- **Providing water for fish:**
 - In dry years, make pulse flow releases from Oroville, and extract water supply from WSWB for local use



WSWB Public Benefits

- **Ecosystem:**
 - Adds water to Feather River for juvenile Chinook salmon.
- **Emergency Water Backup:**
 - Provides emergency water storage for communities along the California Aqueduct during future Delta supply failures



Willow Springs
Water Bank



Chronicle / Frederic Larson



Willow Springs
Water Bank

What has been done?

- **Project Management**

- Progress Reports
- Scheduling and Invoicing

- **Environmental Documentation and Permitting**

- Coordination with Resource Agencies for Public Benefit Contracts
- CEQA Coverage for Local Infrastructure

- **Feasibility and Technical Studies**

- Feasibility Study (2021)
- Ecosystem Water Operations Plan (2022)
- Emergency Response Operations Plan (2022)

Why Now?



Willow Springs
Water Bank

Planning Expenditures for the next 2 to 3 years

- Reduces uncertainty in planning
- Accelerates design process to support permitting

Remaining Early Funding Will Cover

- Preliminary Design
- Permitting and Contracts for Public Benefits
- Restart Water Quality Monitoring
- Finalization of Pulse Flow CEQA
- Continued Coordination with Agencies



Willow Springs Water Bank

Mark Beuhler
General Manager
Willow Springs Water Bank
(WSWB)

