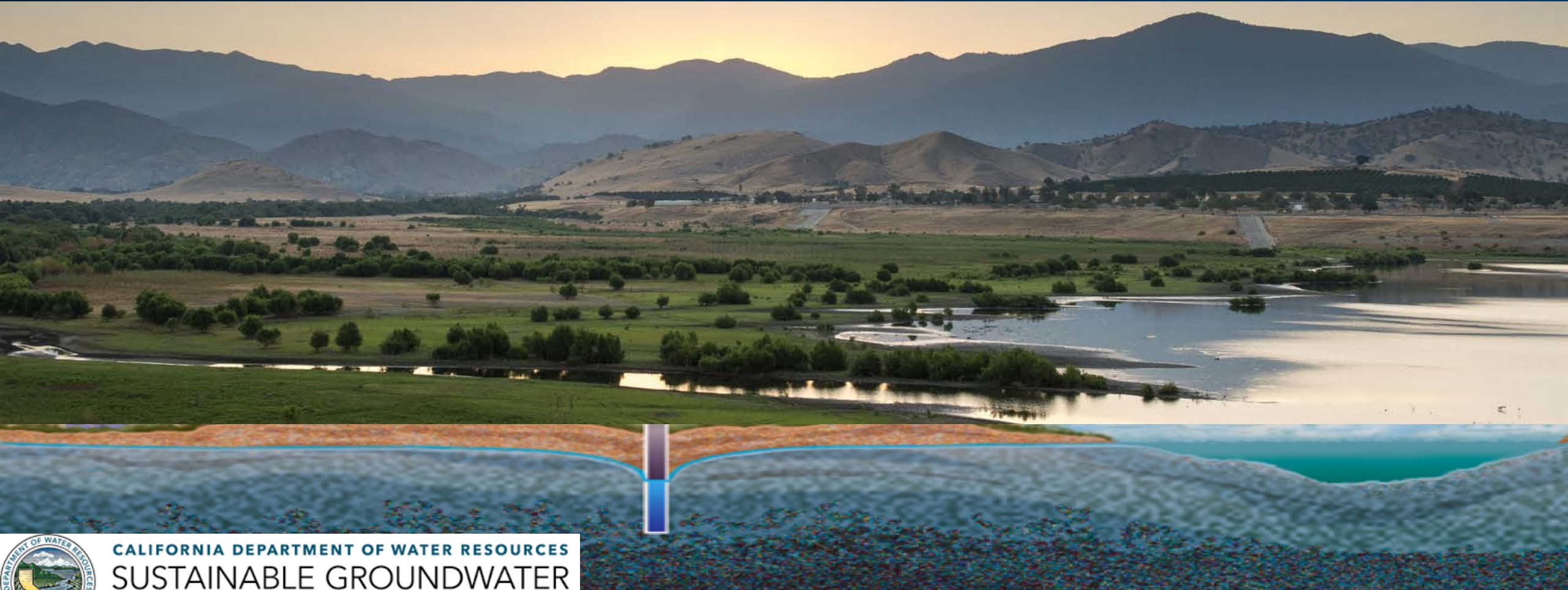


# Sustainable Groundwater Management Act - Update



CALIFORNIA DEPARTMENT OF WATER RESOURCES  
SUSTAINABLE GROUNDWATER  
MANAGEMENT OFFICE

# California's Groundwater Management



**Agriculture**



**Drinking Water**



**Environment**



**Businesses**

# SGMA Timeline

2012 2012-2016 Drought



In dry years,  
up to

60%

of California's  
supply comes from  
**GROUNDWATER**

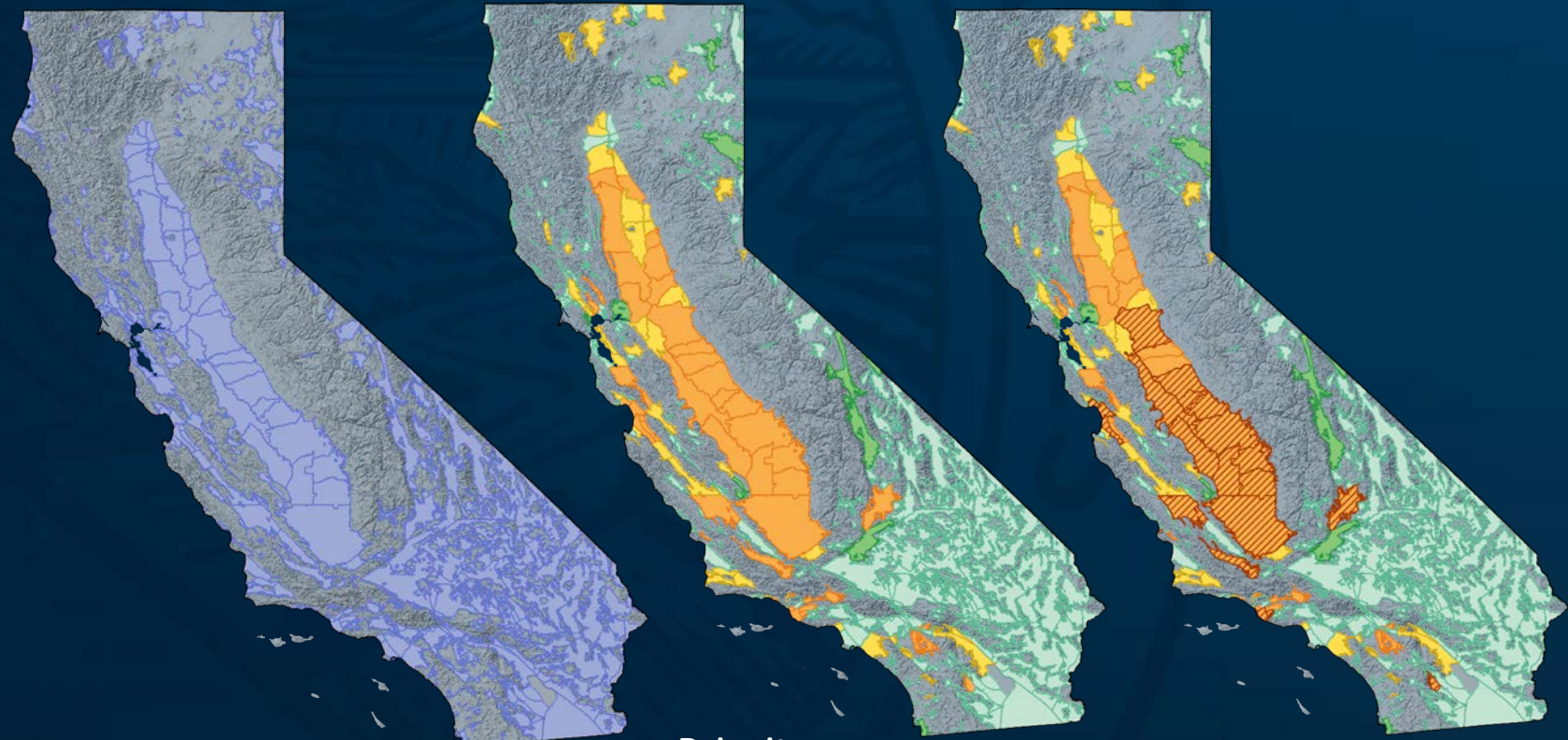
# SGMA Timeline

**2012** 2012-2016 Drought  
**2014** SGMA signed into law

**515** Basins

**94** High & Medium Priority Basins

**21** Critically Overdrafted Basins



**Groundwater Basins**

Priority:

- High
- Medium
- Low
- Very-Low
- Critically Overdrafted Basins

# SGMA Timeline

2012-2016 Drought

SGMA signed into law

# SGMA Overview

## Local Control



## Sustainability

*Avoid Six Undesirable Results*



*Lowering of GW Levels*



*Reduction of GW Storage*



*Seawater Intrusion*



*Degraded Water Quality*



*Land Subsidence*



*Depletion of Interconnected Streams*

# SGMA Timeline

2012-2016 Drought

SGMA signed into law

SGMA Rulemaking



## California Water Commission Approved Two Regulations



Basin Boundary Regulations  
(Oct. 2015)



GSP Regulations  
(May 2016)

# SGMA Timeline

2012-2016 Drought

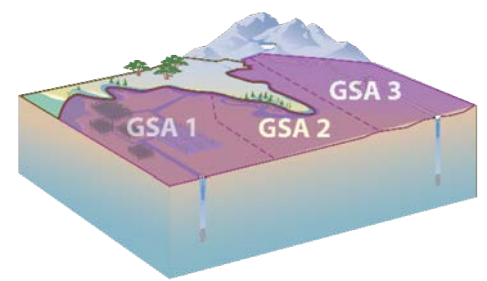
SGMA signed into law

SGMA Rulemaking

# Groundwater Sustainability Plans

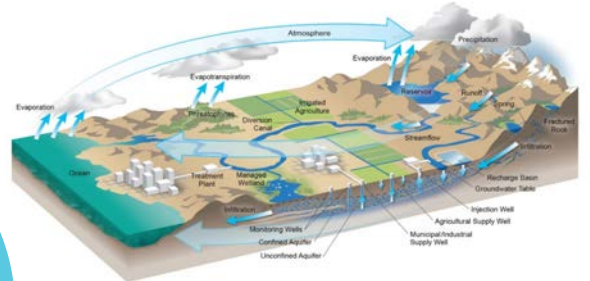
## Who

- Administrative Information -



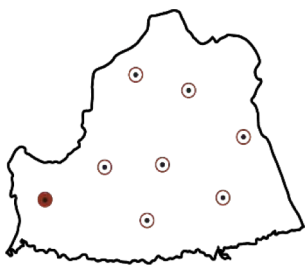
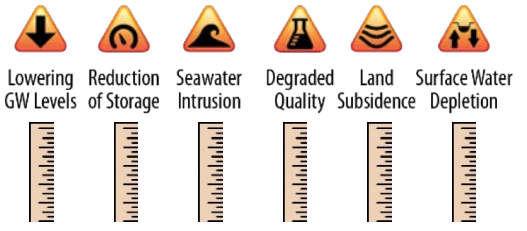
## What

- Basin Setting -



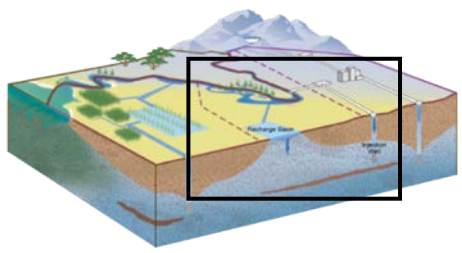
## Where

- Sustainable Management Criteria  
- Monitoring Network -



## How

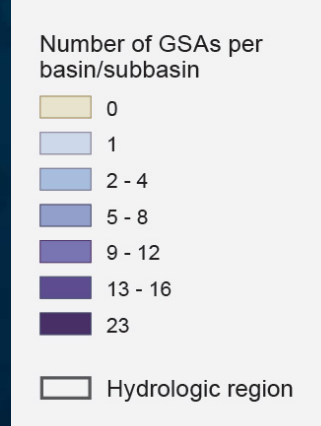
- Projects & Management Actions -



# SGMA Timeline

- 2012** 2012-2016 Drought
- 2014** SGMA signed into law
- 2016** SGMA Rulemaking
- 2017** Agency Formation

**>250**  
Groundwater Sustainability  
Agencies Formed by June 30, 2017



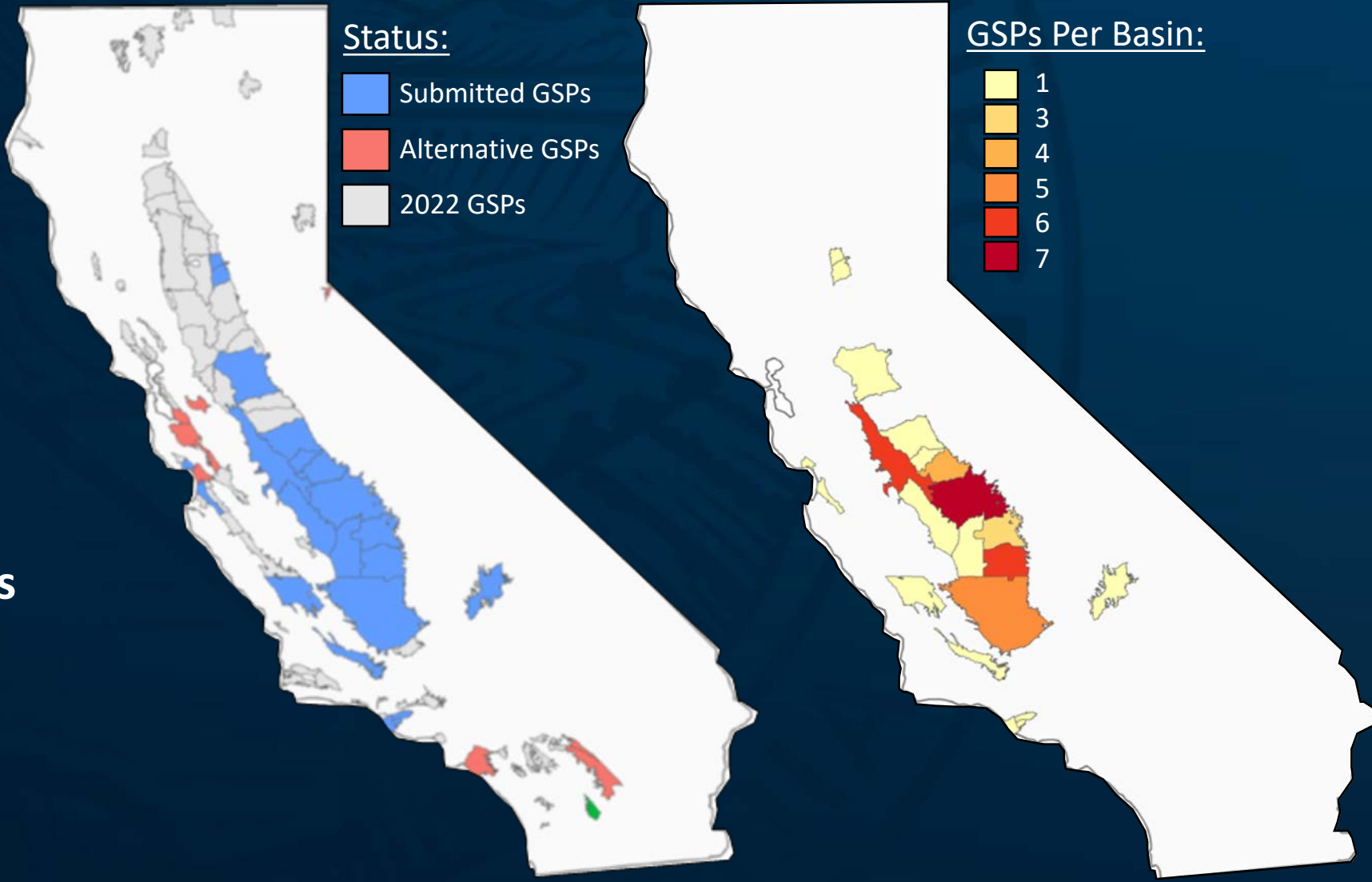


# SGMA Timeline

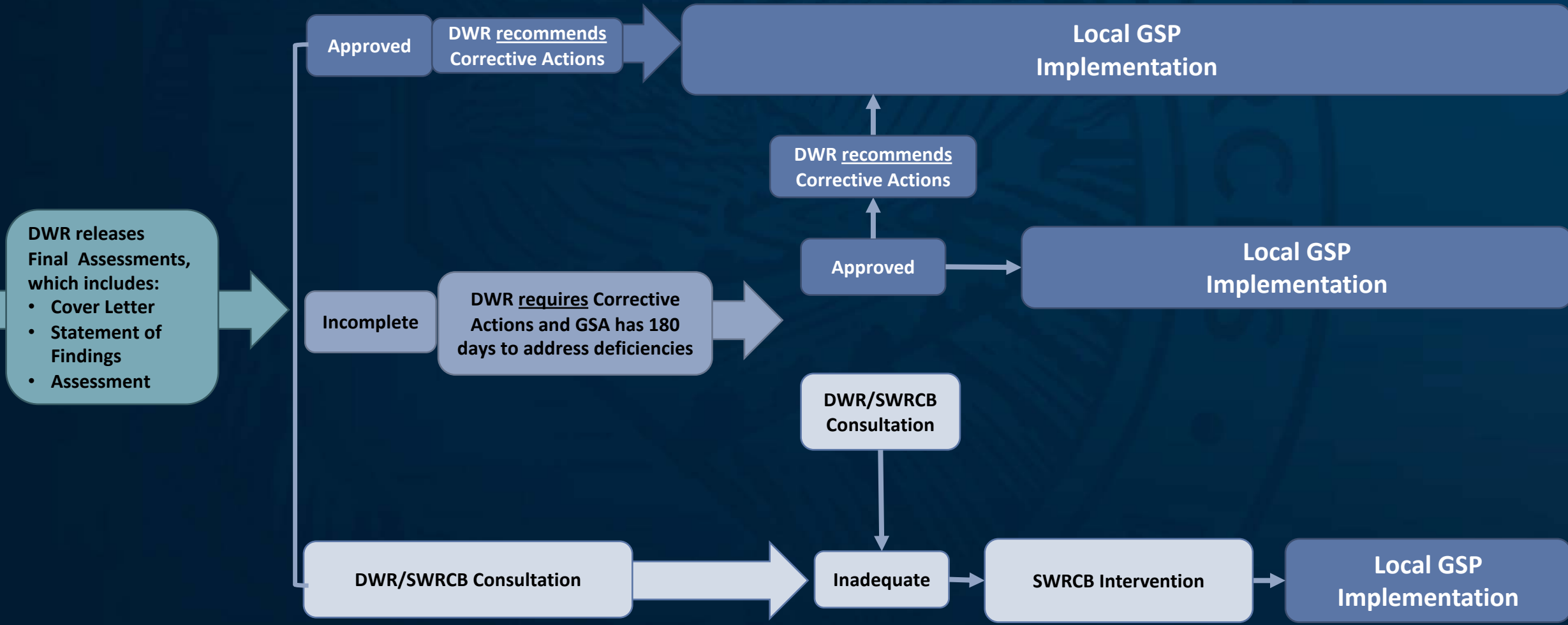
# 46

Groundwater Sustainability Plans Submitted by January 31, 2020

- 2012-2016 Drought
- 2014** SGMA signed into law
- 2016** SGMA Rulemaking
- 2017** Agency Formation
- 2020** GSP Submittals, Rnd 1
- 2021** Initial GSP Assessments
- 2022** GSP Submittals, Rnd 2



# SGMA Regulatory Pathways for GSP Evaluation



# Assessment Release Approach

GSA's Implementing Local Projects & Management Actions

Annual Reporting – Data and Implementation Progress

2020 (2021) 2022

2025/2027

2030/2032

2035/2037

2040/2042

Initial GSP Due  
COD Basins – 2020  
High & Medium  
Priority Basins – 2022

5-Year Plan  
Update

5-Year Plan  
Update

5-Year Plan  
Update

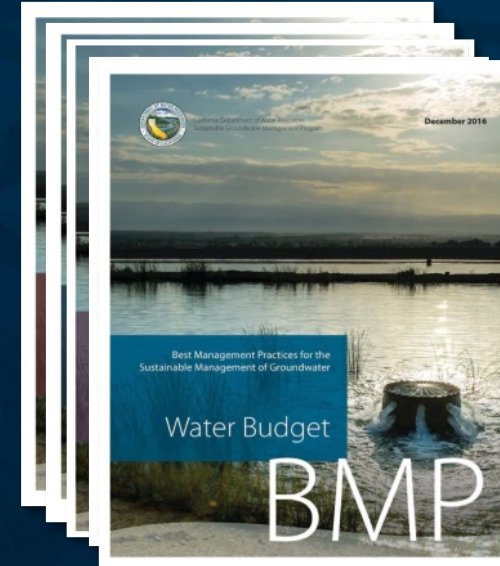
Sustainability Goal Reached  
COD Basins – 2040  
High & Medium  
Priority Basins – 2042

Critical  
decision-making  
year on first GSPs

State Technical, Planning, & Financial Assistance

# SGMA Assistance – To Date

- *Since 2015 DWR has provided ~\$180M in assistance to support locals with SGMA implementation:*
- **Planning Assistance (~\$10M to date)**
  - Basin POCs
  - Facilitation Support
  - Written Translation Services
- **Technical Assistance (~\$20M to Date)**
  - Technical Support Services
  - Data and Tools
- **Financial Assistance (~\$150M to Date)**
  - Sustainable Groundwater Management (SGM) Planning Grant Program



<https://water.ca.gov/Programs/Groundwater-Management/Assistance-and-Engagement>

# SGMA Assistance – Future

- *Another ~\$200M in assistance will be provided over the next four years which will be continually refined to respond to local needs:*

- **Planning Assistance (~\$8M over next 4 yrs)**

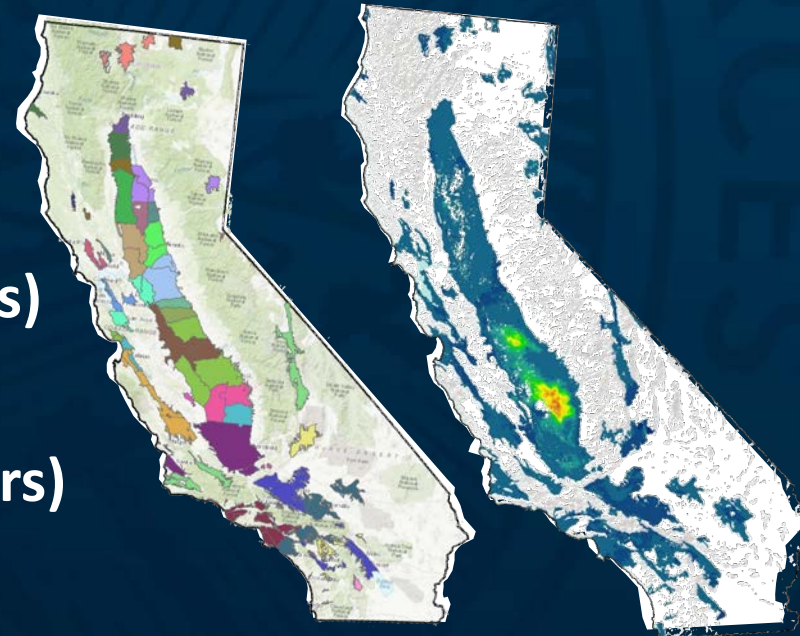
- Basin POCs
- Facilitation Support
- Written Translation Services

- **Technical Assistance (~\$90M over next 4 yrs)**

- Technical Support Services
- Data and Tools

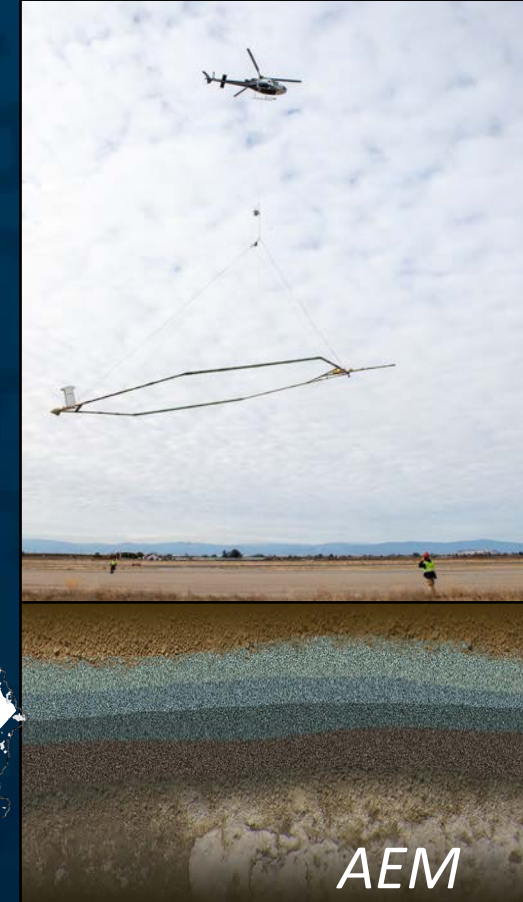
- **Financial Assistance (~\$100M over next 4 yrs)**

- SGM Implementation Grant Program



DWR POCs

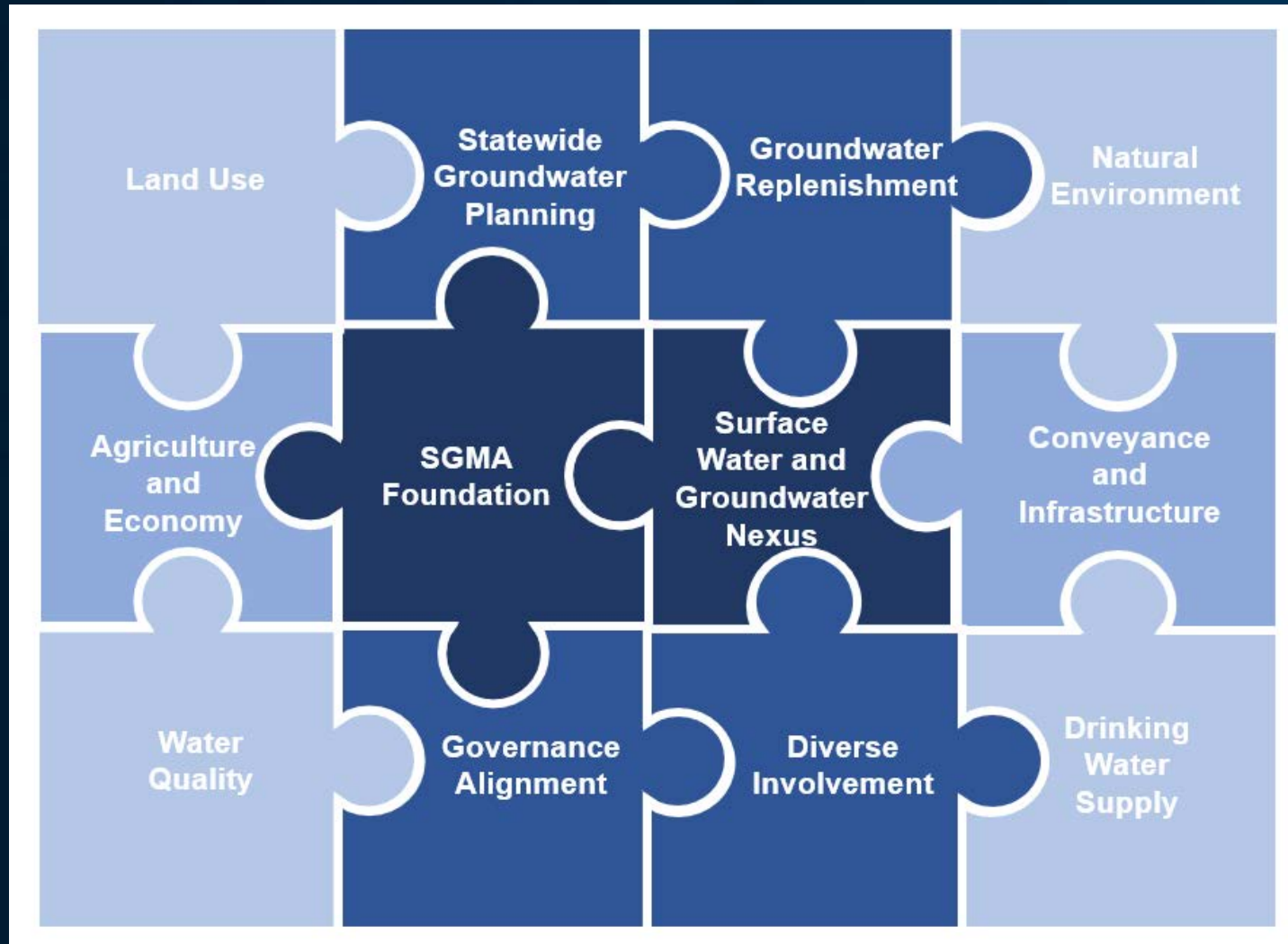
InSAR



AEM

<https://water.ca.gov/Programs/Groundwater-Management/Assistance-and-Engagement>

# Closing



- **Projects and Actions**

- GSA's Have New Powers and Authorities

- **Monitoring and Adapting**

- Fill Data Gaps
- Track Performance
- Improve Understanding

- **Coordination and Alignment**

- Local to Regional Management
- Engagement