



PUBLIC WORKS DEPARTMENT
WATER RESOURCES DIVISION

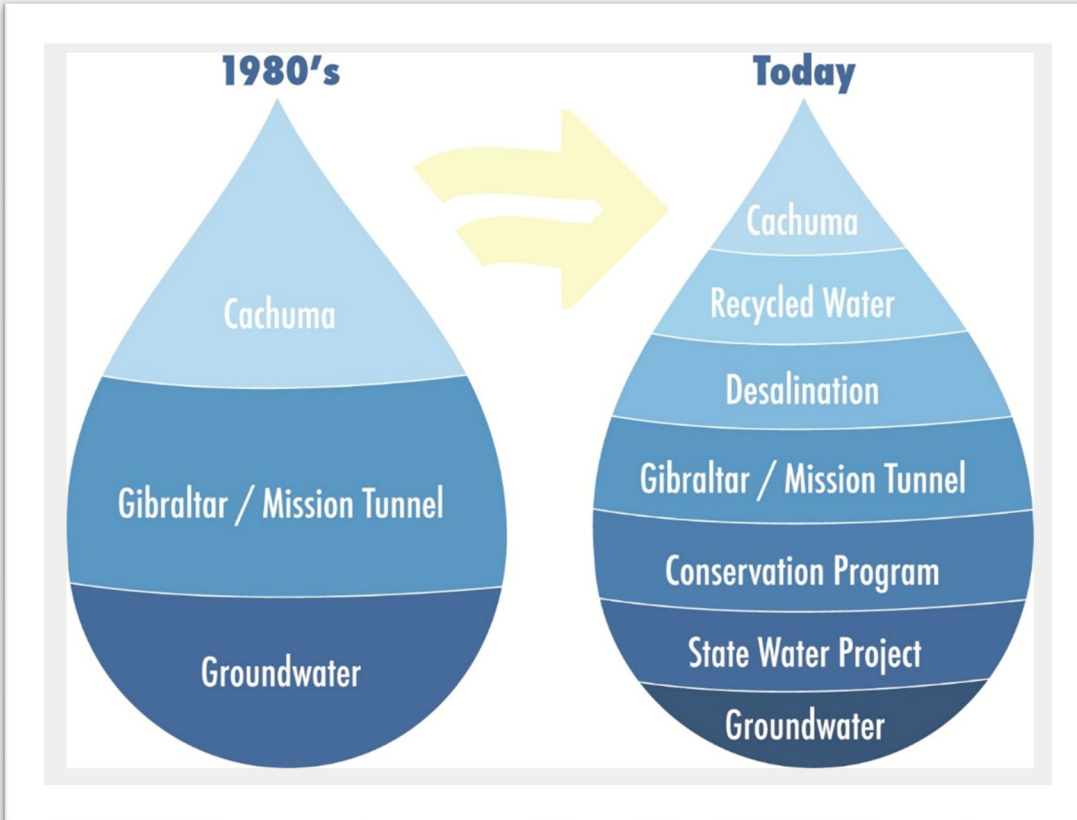
CHARLES E. MEYER SEAWATER DESALINATION PLANT

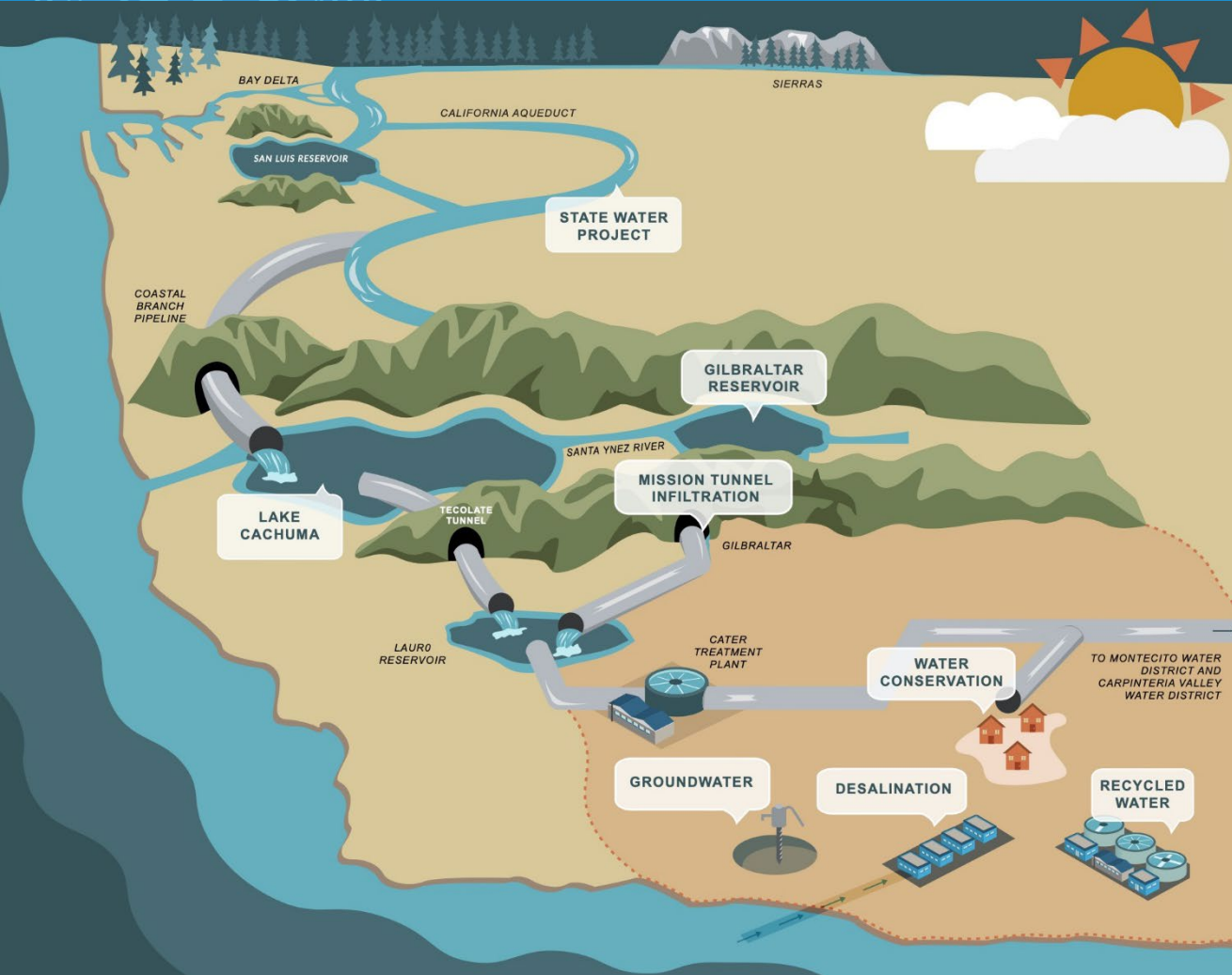
California State Water Commission – May 17, 2023



1806 Dam & Aqueduct







The City manages one of the most diverse water portfolios in California.

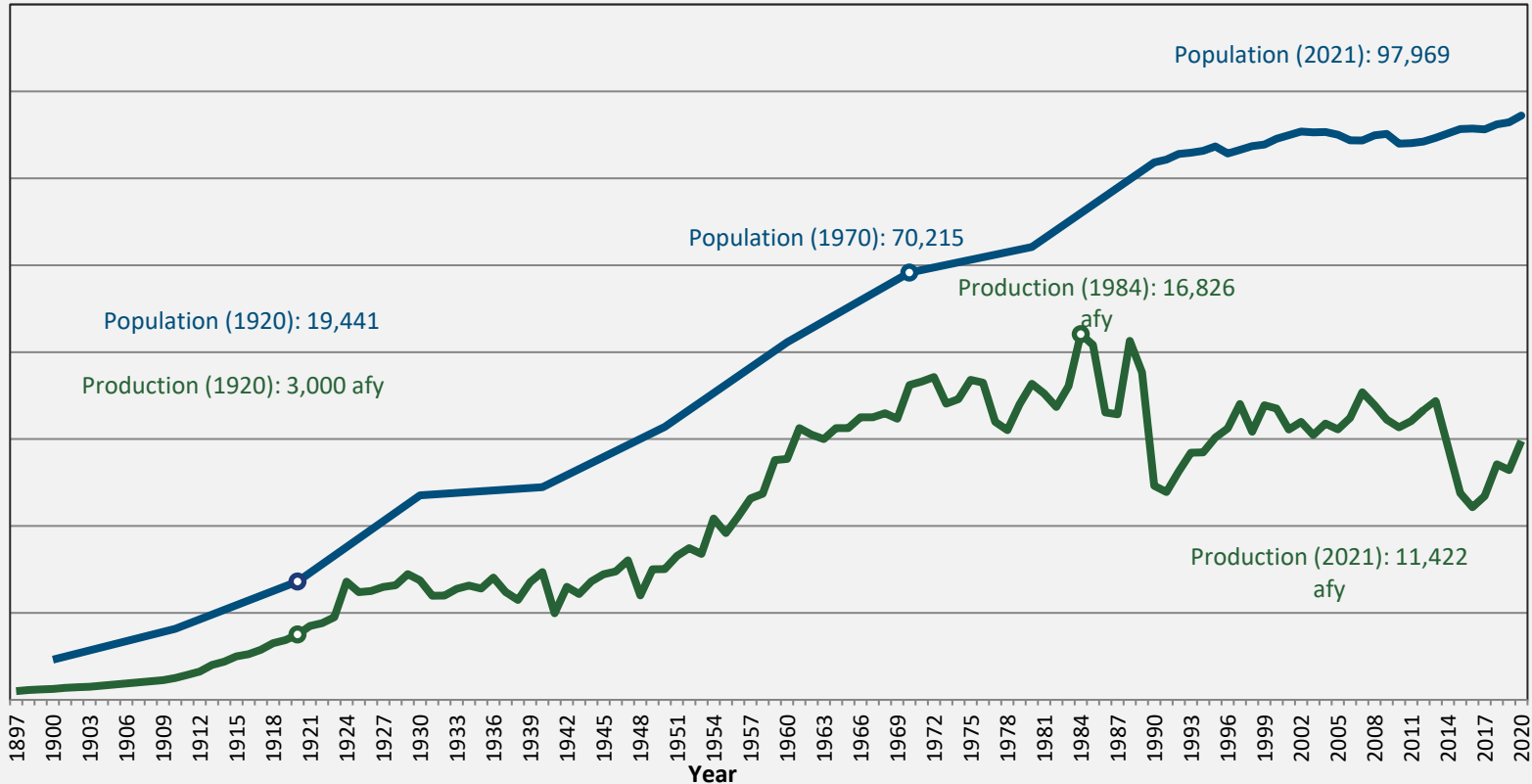


Water Vision

SANTA BARBARA

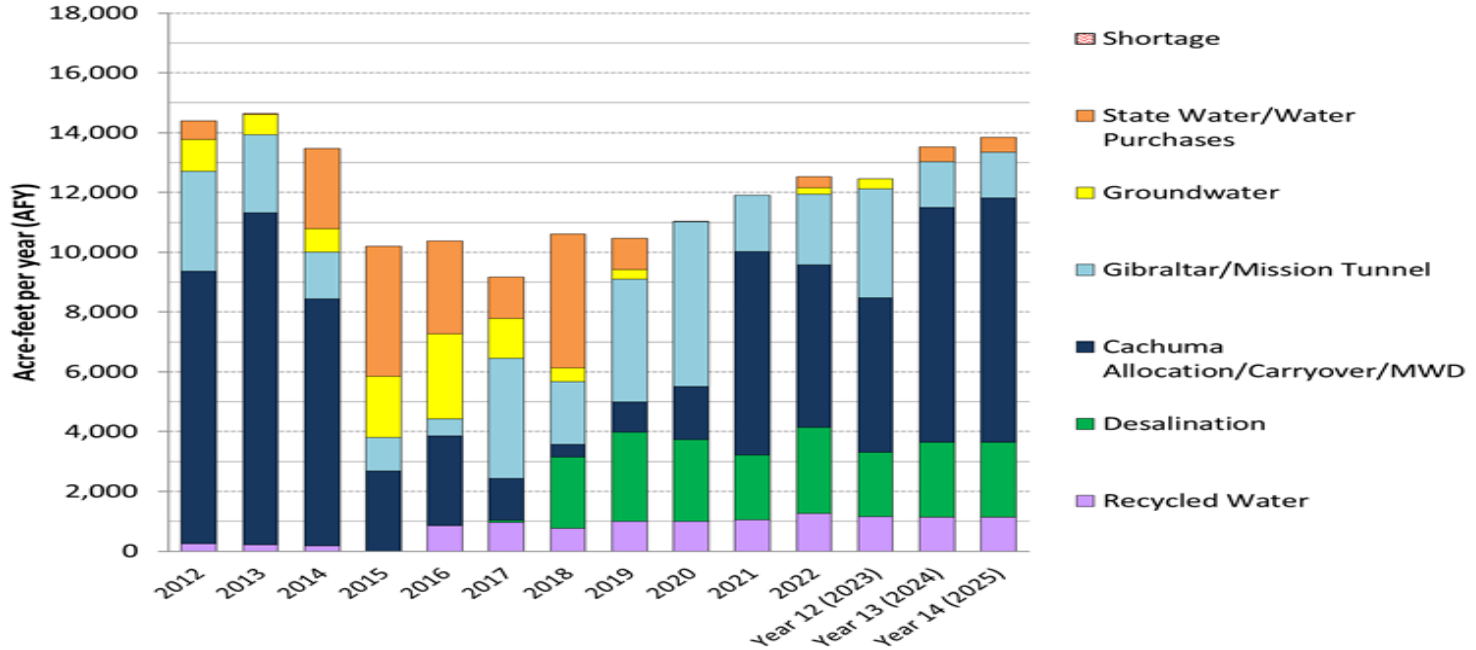
Develop an **equitable, resilient, environmentally friendly, and cost-effective plan** that sets the vision for the City's water supply and management for the **next 30 years**.



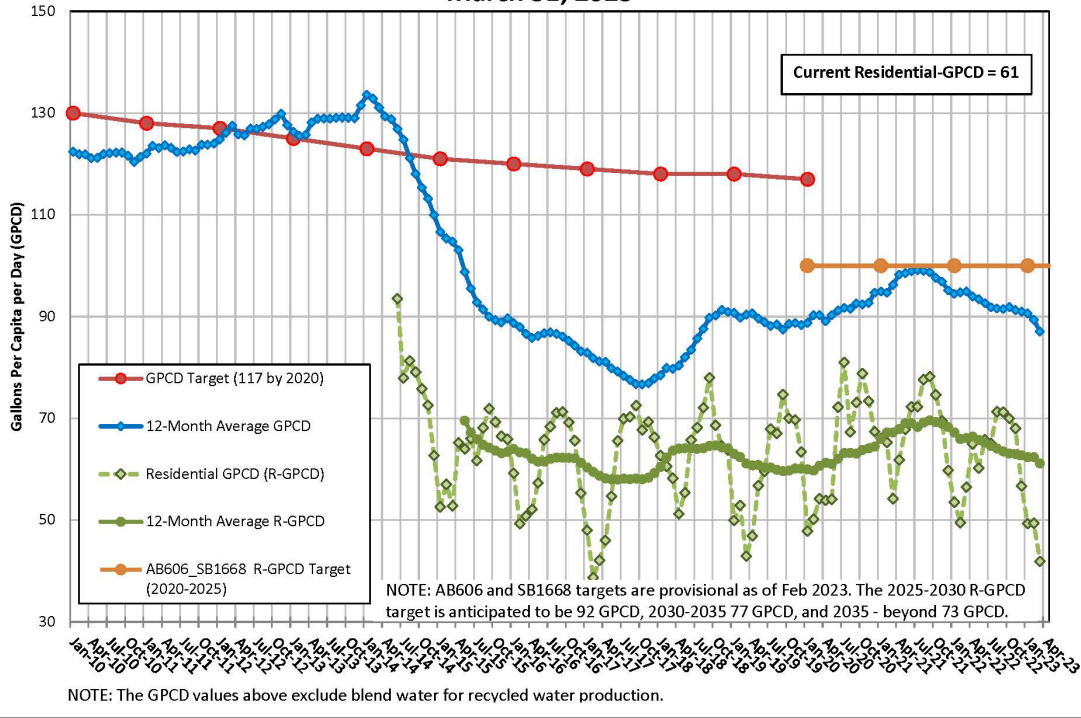


Adaptive & Diverse Water Supply Management

CITY OF SANTA BARBARA WATER SUPPLY FOR WATER YEARS 2012-2025
INCLUDING WATER SALES TO MWD BEGINNING JANUARY 2022
 Water Year = October 1 - September 30



City of Santa Barbara Water Use in Gallons Per Capita per Day (GPCD) March 31, 2023



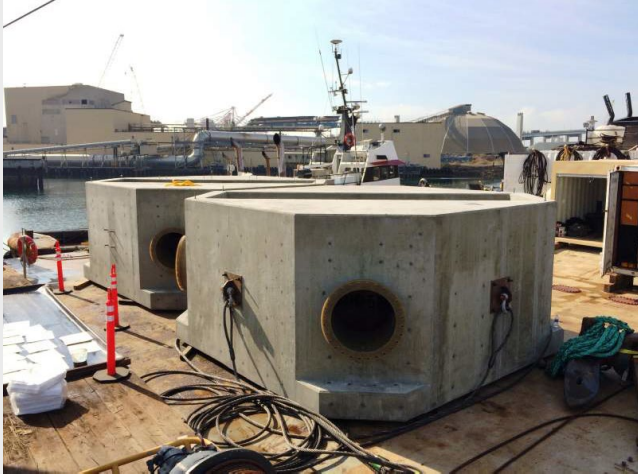




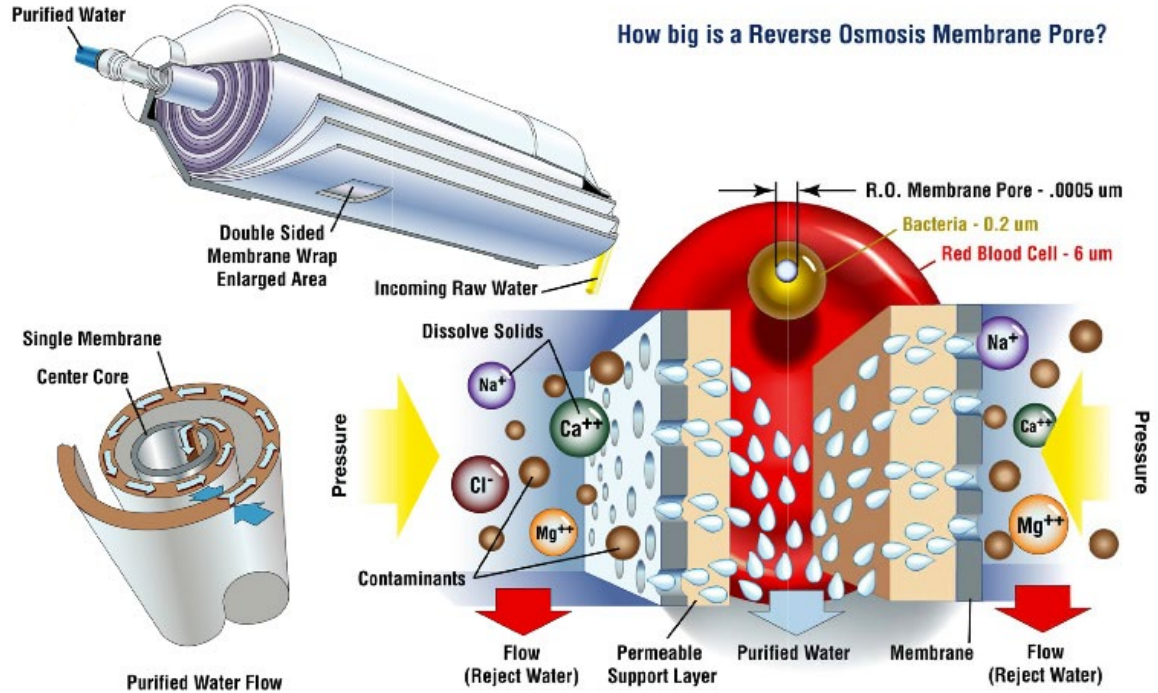
34°25'04.03" N 119°41'03.38" W elev 37 ft eye alt 2058 ft

Google earth

Intake Facility



Reverse Osmosis









Current Operations

- Produces 3 million gallons per day, or 3,000 acre-feet per year (about 30% of current demands)
- Drought supply -> Adaptive Management
- CDP allows for flexible operations, expansion to 10,000 AFY, and use as a regional facility

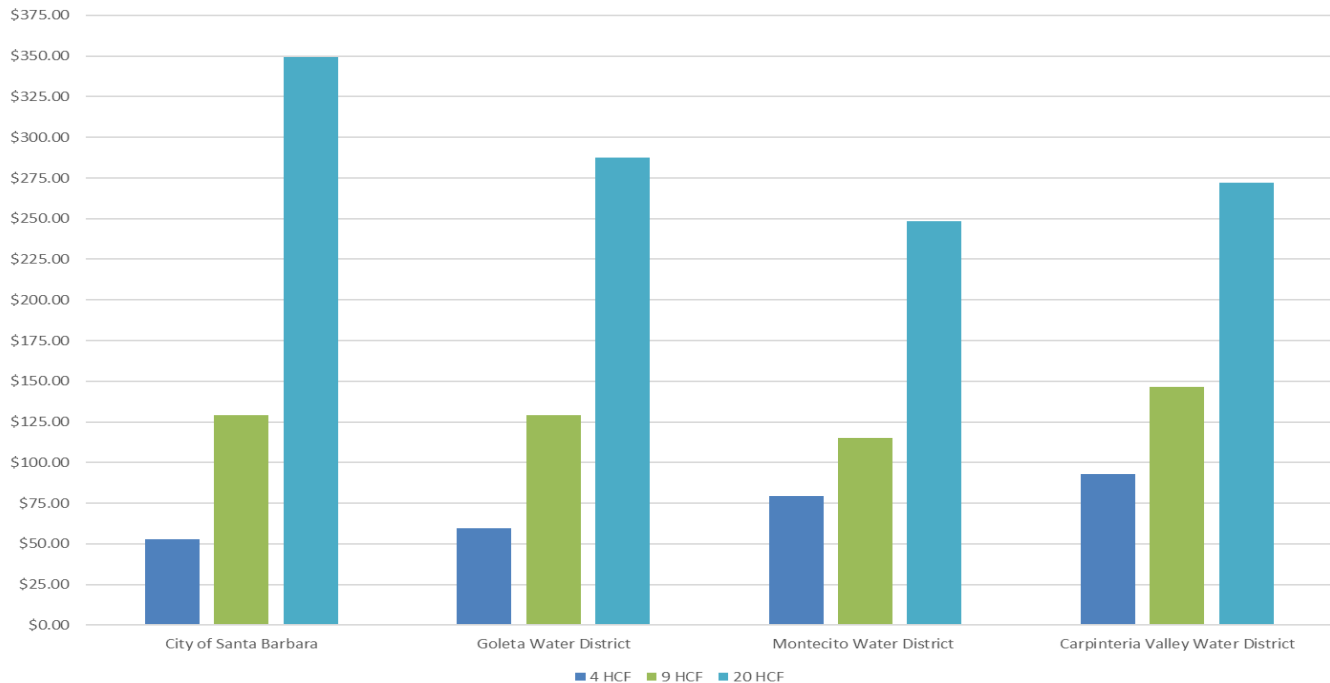


Reactivation Costs

- Capital Cost ~\$72 million (State Revolving Fund Loan)
 - *\$4.2M/Year debt service over 20 years at 1.6% interest*
 - Proposition 1 Grant
 - *Received a \$10M grant (Reduced Capital Cost to ~\$62M)*

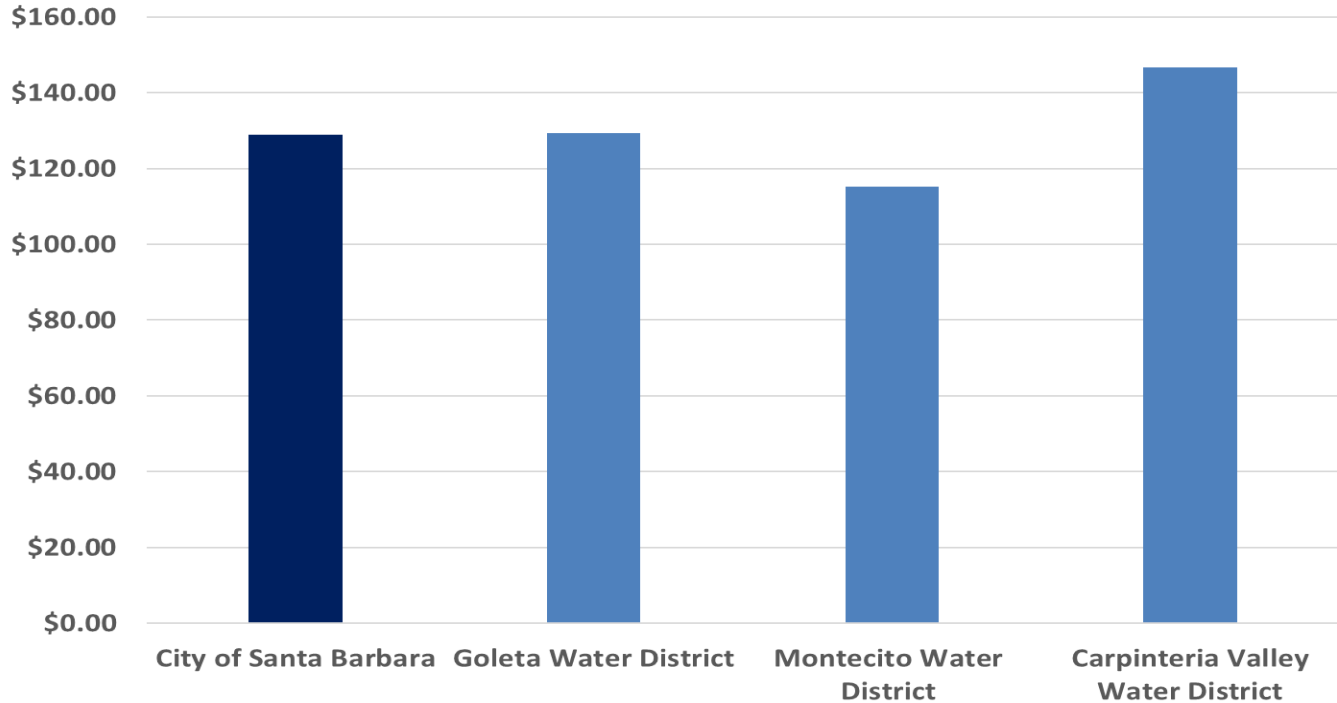
Proposed FY24 South Coast Monthly Charges for Single Family Residential Customer with 5/8" meter*

*Smallest meter offered by MWD and CVWD is 3/4"



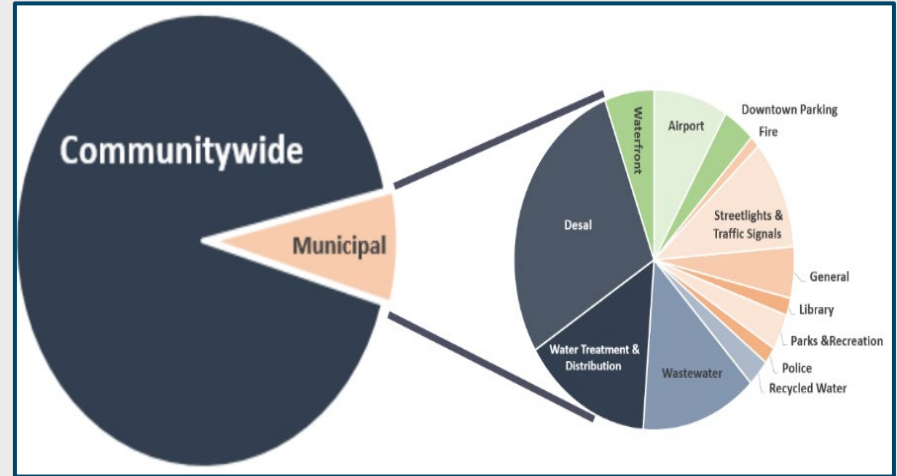
FY24 South Coast Monthly Charges for 9 HCF Use Single Family Residential Customer with 5/8" meter*

*Smallest meter offered by MWD and CVWD is 3/4"



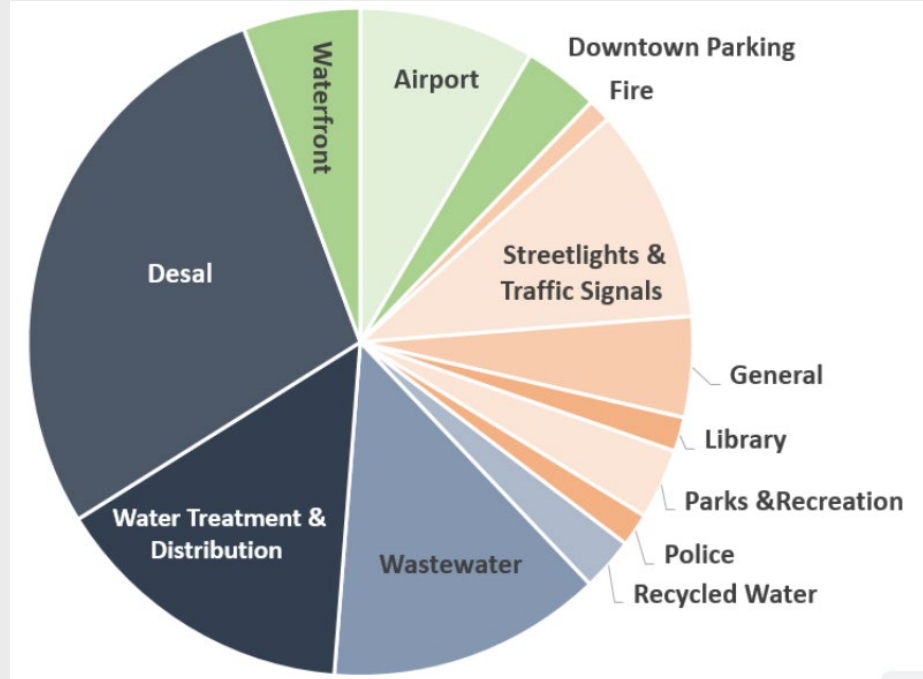
Santa Barbara Clean Energy

- City has prioritized carbon neutrality
- Formed Santa Barbara Clean Energy to source 100% carbon free electricity for the Community
- Completely decarbonizes 98% of community electrical use
- Power City Water System with 100% carbon free electricity
- Over 50% of Municipal electrical load is used for Water Resources
 - Water Resources accounts for 4.5% of total community load
 - Desal accounts for 2% of total community load



Santa Barbara Clean Energy – Water-Energy Nexus

- In March 2022 – All City facilities switched over to 100% carbon free electricity
- Over 50% of Municipal electrical load is used by Water Resources
 - Desal accounts for half of Water Resources electrical demand



END