

California Water Commission

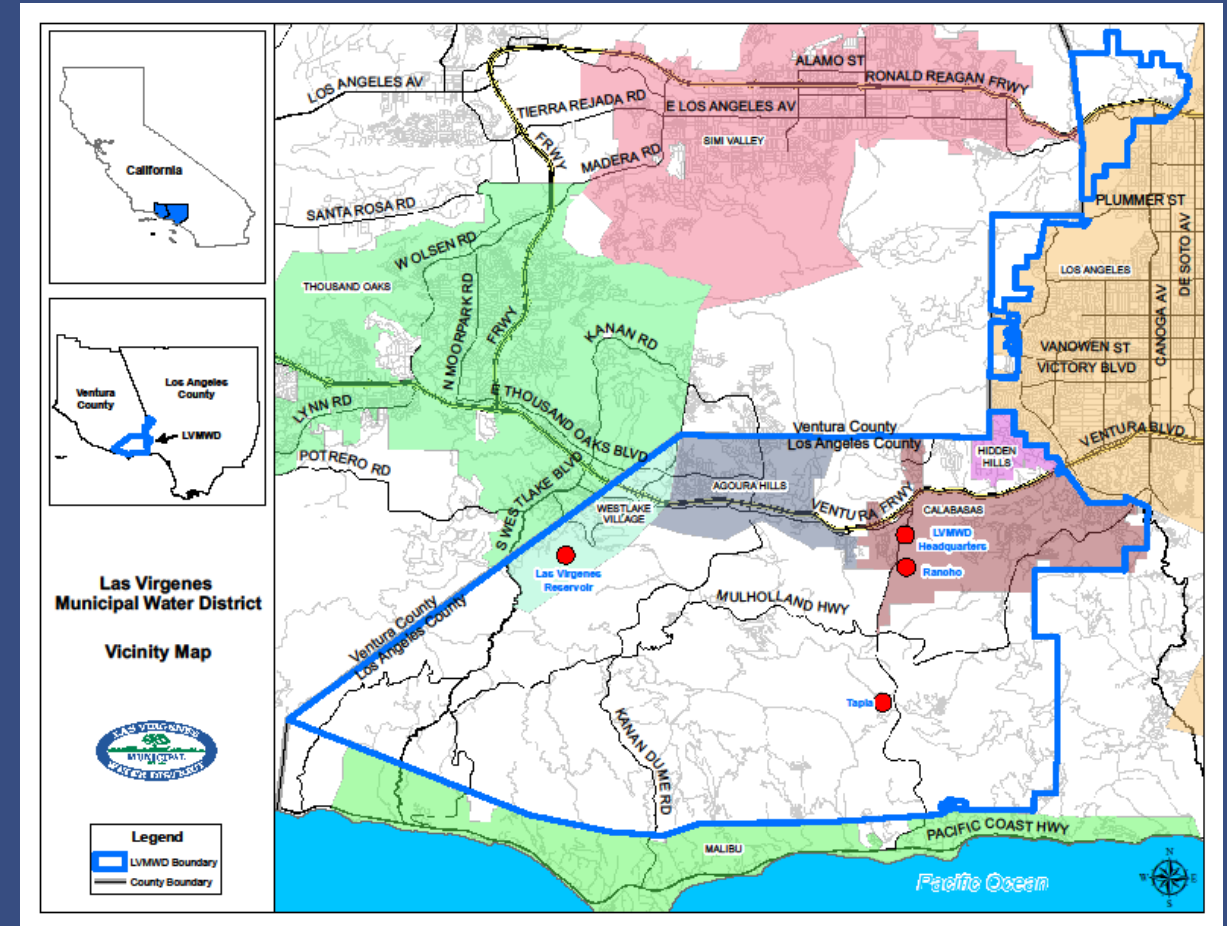
Expert Panel on Drought
Preparedness and Response: A
Retail Water Agency Perspective

David W. Pedersen, P.E.
General Manager



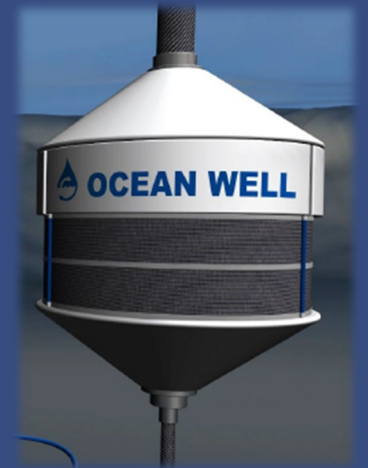
About LVMWD

- Retail water and wastewater agency
- 122-square mile service area
- Member Agency of Metropolitan Water District of Southern California (MWD)
- Among the most severely impacted SoCal water agencies during current statewide drought
 - Lack of local water supplies
 - Part of SWP-dependent area of MWD's service area



Diversify Water Supply Portfolio

- Water recycling
 - Non-potable reuse
 - Potable reuse (indirect and direct)
- Stormwater capture
- Managed Groundwater
 - Flood-MAR
 - Ag-MAR
- Desalination
 - Brackish/impaired water
 - Seawater



Pure Water Project Las Virgenes-Triunfo

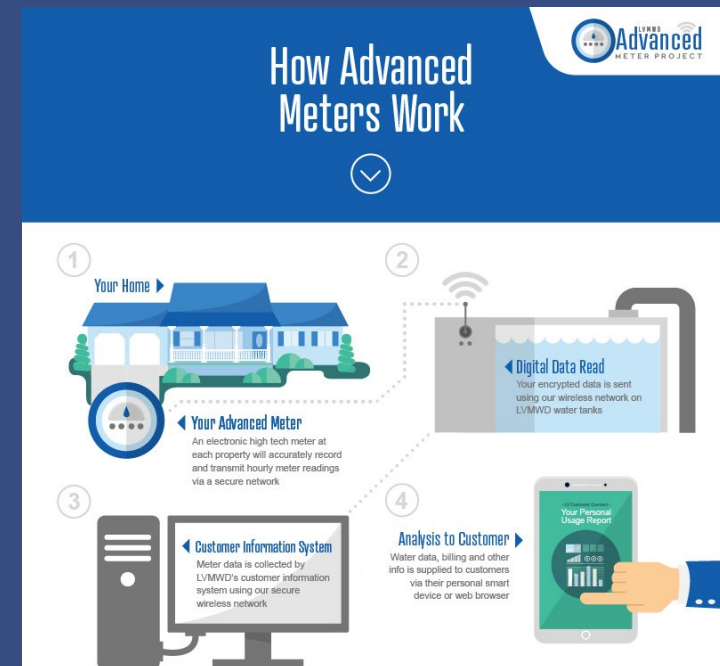
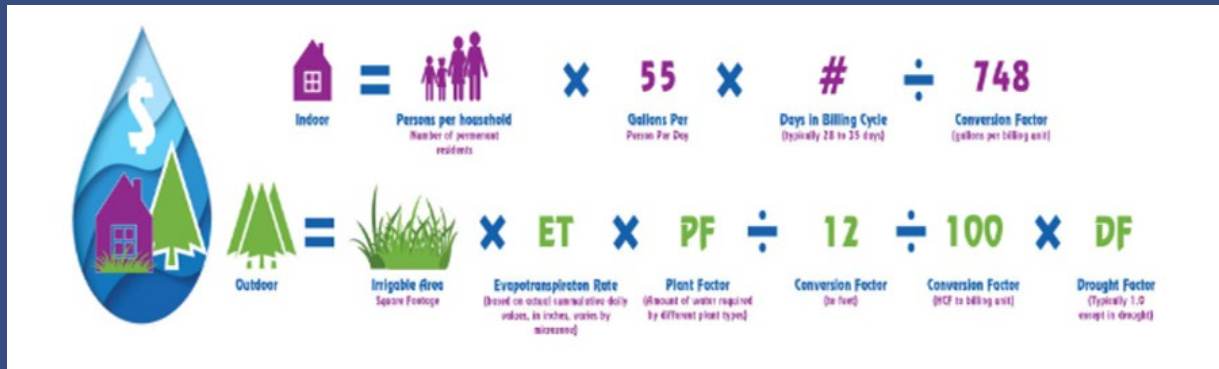


- Reservoir water augmentation project (indirect potable reuse)
- \$364-million investment to produce 20% of water supply locally



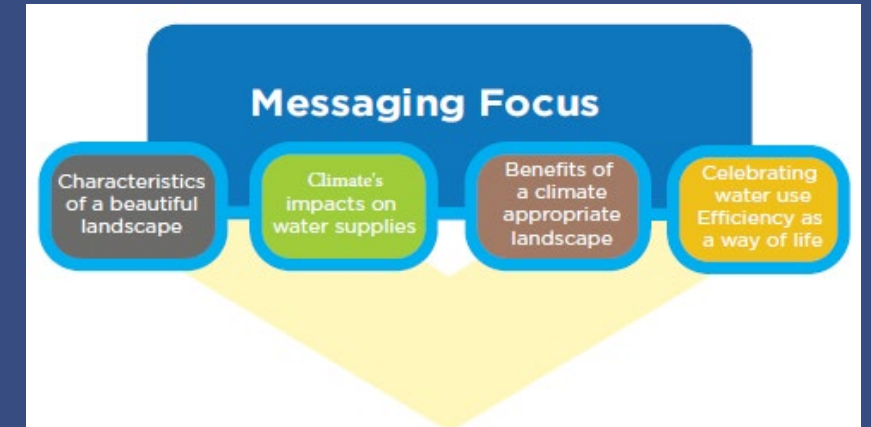
Make Conservation a Way of Life

- Change customers' relationship with water



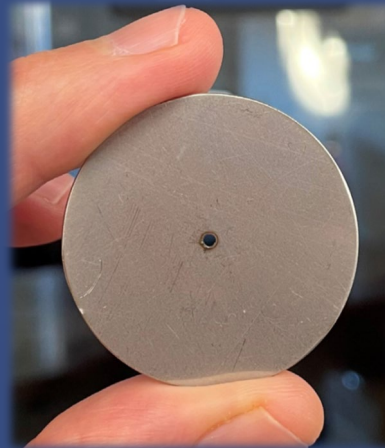
Make Conservation a Way of Life

- Transform urban landscapes to be more California native and drought tolerant



Strengthen Water Shortage Contingency Plans

- SB 606 (2018) – CWC 10632
 - Supply augmentation actions
 - Demand reduction measures
 - Operational changes
 - Mandatory prohibitions
 - Communication protocols



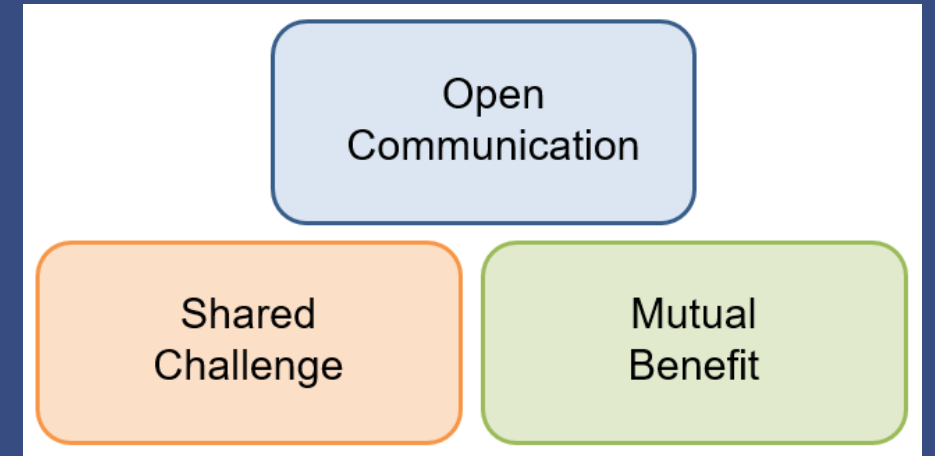
Flow Restrictor

Stages of Water Shortage Condition	
	Normal Supply Conditions
Stage 1	Water Shortage Alert 0-10% water shortage
Stage 2	Water Shortage Warning 10-20% water shortage
Stage 3	Severe Water Shortage Emergency Limit irrigation with drought factor 20-50% water shortage
Stage 4	Critical Water Shortage Emergency No irrigation Reduce 55 gallons/person/day indoor water budget 50%+ water shortage



The Challenges Ahead

- Climate Change is making droughts more frequent, severe and pervasive.
- Infrastructure of the 20th century will increasingly be strained to meet urban, agricultural and environmental needs.
- Significant investments are needed at the local, regional and state levels.
- Collaboration and partnerships will be key to make it happen.



Building Blocks of Collaboration

