



California
**Department of
Conservation**
Division of Land Resource
Protection

Multibenefit Land Repurposing Program

California Water Commission Presentation

January 18th, 2023

Drought, Changing Water Supply, Rural Land Use

- California's farmlands are a **finite resource** that provide many benefits
- California's regional agricultural economies are at a **critical inflection** point
- **Declining water supplies** exacerbates other stressors on ag economy
- Regional agricultural economies are threatened by **parcel-by-parcel decisions**
- **Intentional planning** can maximize water supply, yield, and public benefit
- Groundwater recharge at meaningful scale requires **multi jurisdictional effort**

Multibenefit Land Repurposing Program

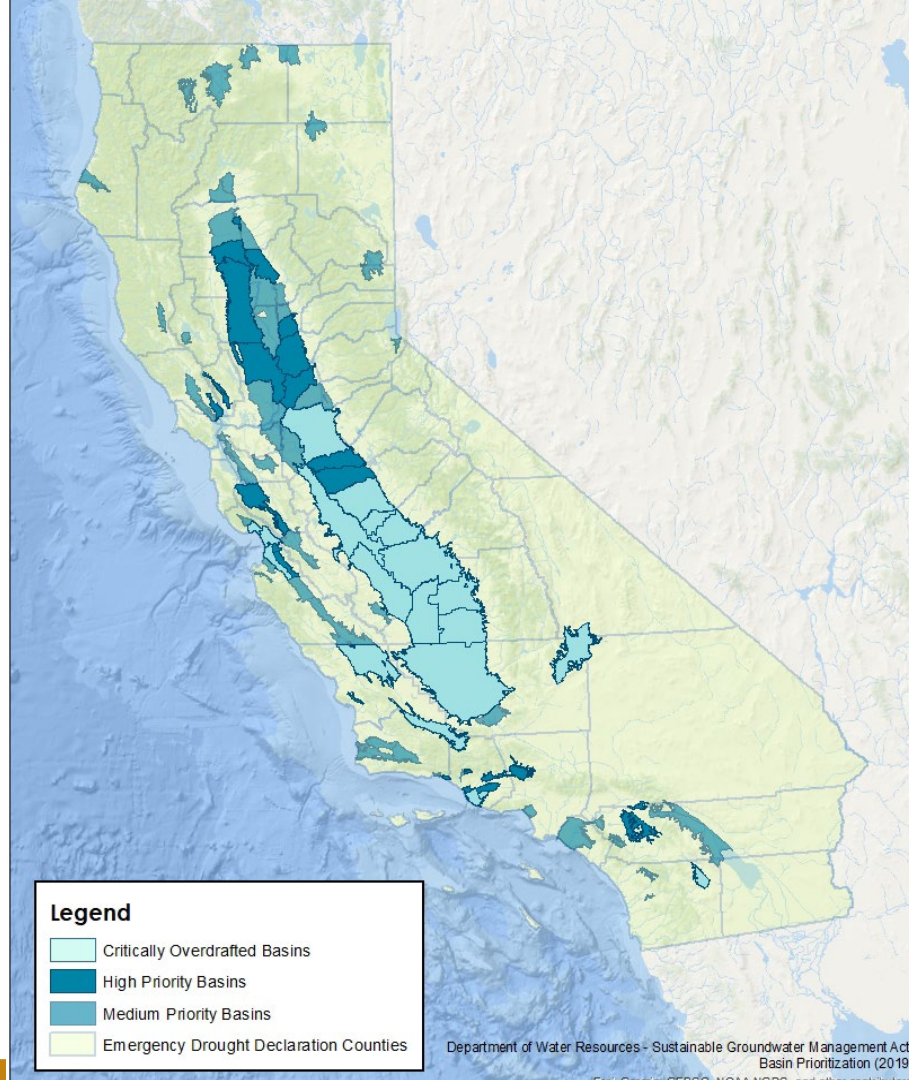
Increase regional capacity to repurpose agricultural land to reduce reliance on groundwater while providing community health, economic wellbeing, water supply, habitat, renewable energy, and climate benefits

Multibenefit Land Repurposing Program

- Sustained ag economies
- Habitat
- Public Space
- Groundwater Recharge
- Drinking Water Protection
- Air pollution abatement
- Economic Development

Program Overview

Eligible Areas



Program Goals

- Support coordinated regional efforts
- Provide short- and medium-term drought relief
- Repurpose agricultural lands
- Sustain land-based economies
- Reduce groundwater use
- Create/restore habitat
- Provide benefits to disadvantaged communities
- Foster partnerships and collaboration

Regional Block Grants

Round 1 Awards

- Awarded: May 2022
- Number of grants: 4
- Amount: \$10 million each
- Grant term: 3.5 years
- Region size: flexible

Round 2 (in progress)

- Draft Guidelines: Dec-Jan 2022/23
- Number of grants: 4
- Amount: \$8-9 million each
- Grant term: 3.5 years
- Region size: flexible

Deliverables

- Multibenefit Agricultural Land Repurposing Plan
- Land repurposing project development and permitting
- Land repurposing project implementation
- Funding provided to support capacity needs of partners
- Outreach, education, and training conducted
- Monitoring conducted

Work toward deliverables may be conducted simultaneously or sequentially, as needed for the successful implementation of the grant

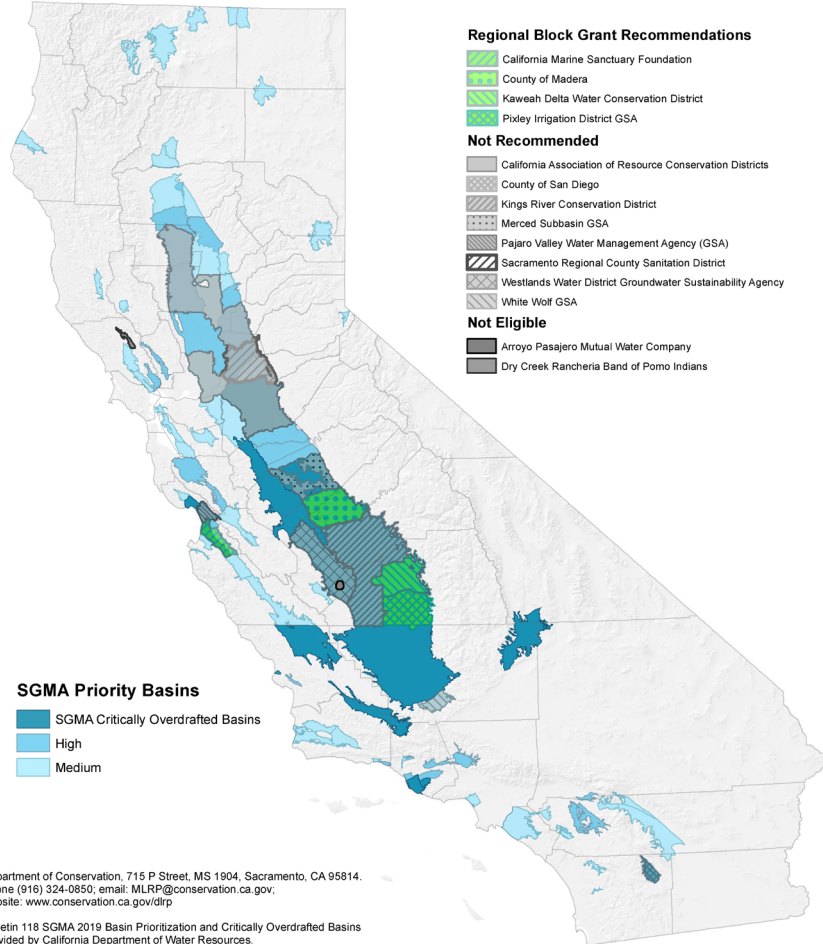
Projects

Example project types:

- Habitat
- Multibenefit recharge areas
- Transitioning irrigated land to dryland farming or rangeland
- Transitioning to less water intensive crops
- Planting cover crops or conservation cover
- Reestablishment of tribal land uses
- Implementation of tribal cultural practices
- Facilitation of renewable energy projects
- Creation of parks or community recreation areas
- Incentive payments to landowners, farmers, and ranchers to implement multibenefit projects
- Land acquisitions, voluntary land transfers, and easement acquisitions
- Pumping allocation acquisitions

Grantees

- Pixley Irrigation District GSA
 - Tule Subbasin
- Kaweah Water Conservation District
 - Kaweah Subbasin
- Madera County
 - Chowchilla Subbasin
 - Madera Subbasin
 - Delta-Mendota Subbasin
- California Marine Sanctuary Foundation
 - 180/400 Foot Aquifer Subbasin
 - Eastside Subbasin



Department of Conservation, 715 P Street, MS 1904, Sacramento, CA 95814.
Phone (916) 324-0850; email: MLRRP@conservation.ca.gov;
website: www.conservation.ca.gov/dlrp

Bulletin 118 SGMA 2019 Basin Prioritization and Critically Overdrafted Basins provided by California Department of Water Resources.

This map is intended for general and reference purposes only. The Department of Conservation makes no warranties as to suitability of this map for any particular purpose.
California Department of Conservation, Division of Land Resource Protection, May 2022.

0 20 40 80 120 160 Miles



Tule Subbasin: Geography and Team

MLRP Team

Pixley GSA

Tule Basin Land and Water Conservation Trust

Self Help Enterprises

The Nature Conservancy

Audubon CA

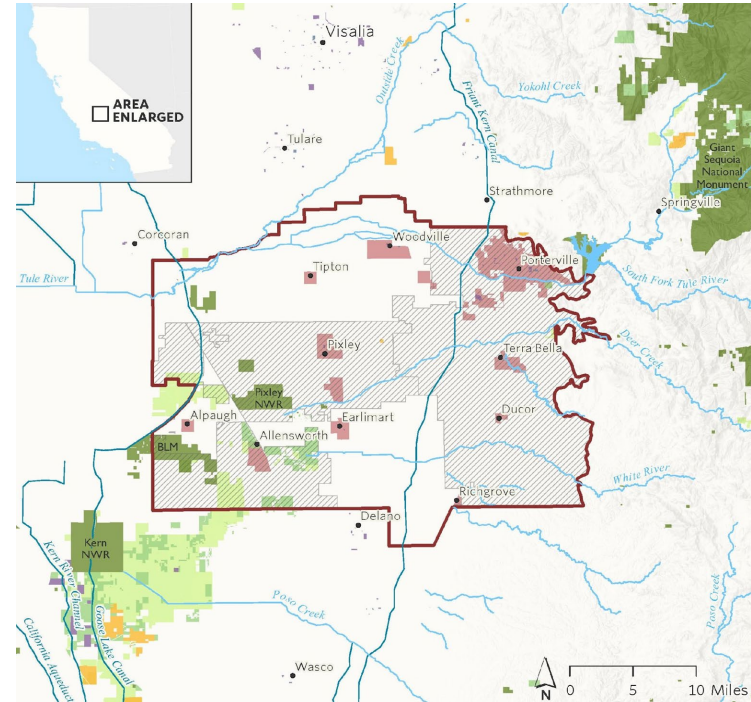
Eastern Tule GSA

TriCounty GSA

Sequoia Riverlands Trust

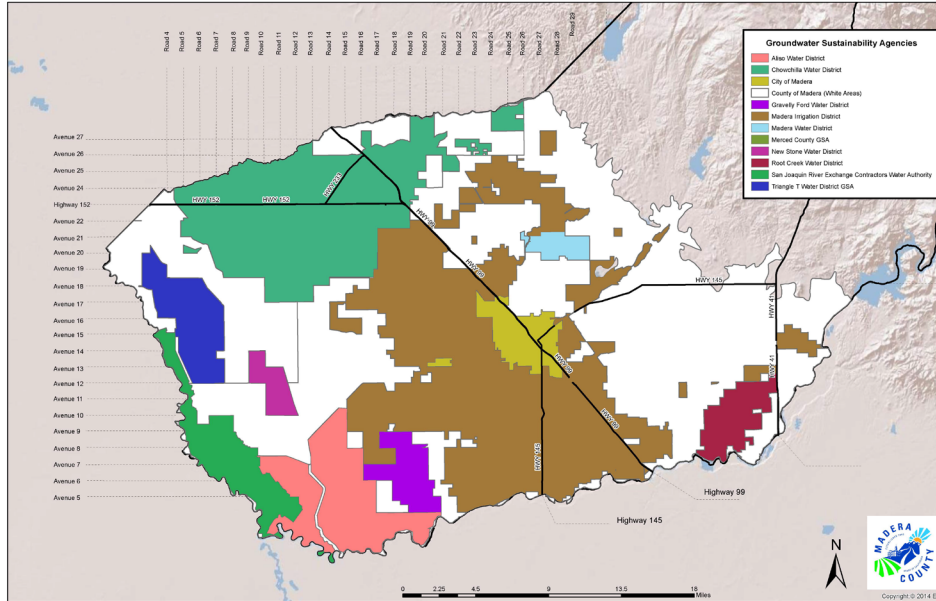
UC Merced

Tulare Basin Watershed Partnership Network



The Tule Subbasin needs to reduce its overdraft by an estimated 115,000 aft/year to achieve groundwater sustainability.

Madera County: Geography and Team



MLRP Team

Madera County

Madera County Farm Bureau

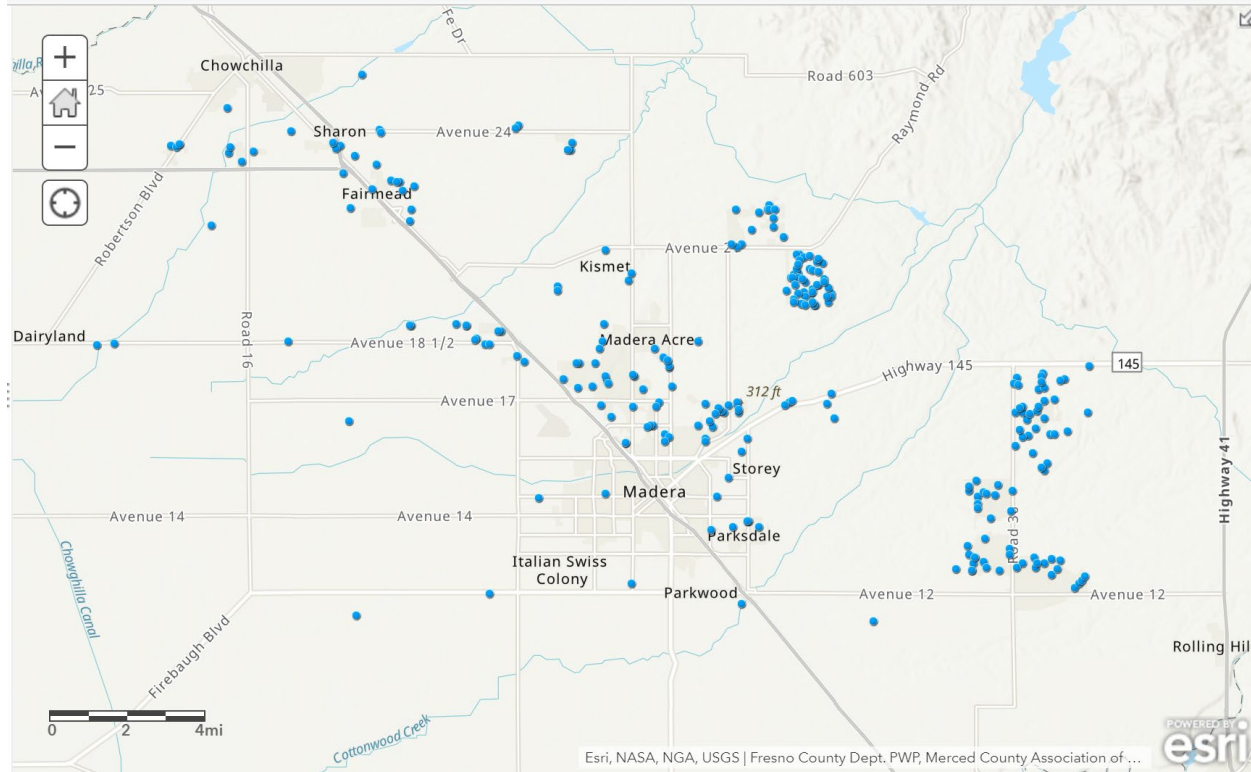
Madera/Chowchilla Resource
Conservation District

Madera County Agricultural Water
Association

California Farmland Trust

Madera County: Program Vision and Approach

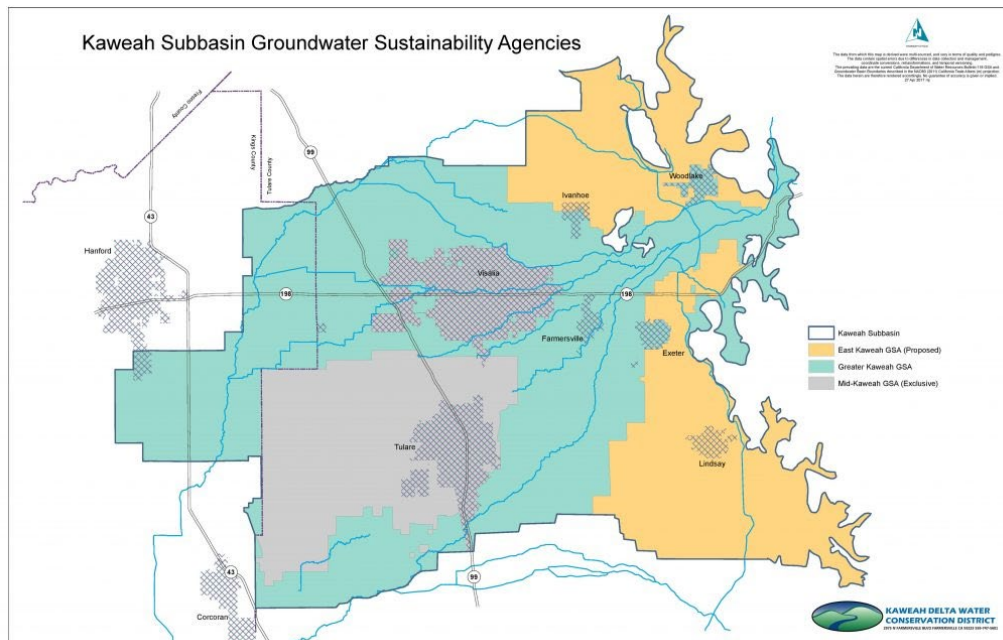
Focus on Areas around Disadvantaged Communities



Kaweah Subbasin: Geography and Team

MLRP Team

Kaweah Delta Water Conservation District
East Kaweah GSA
Greater Kaweah GSA
Mid-Kaweah GSA
Sequoia Riverlands Trust



Salinas Valley: Geography and Team

MLRP Team

Salinas Valley Basin Groundwater
Sustainability Agency

Central Coast Wetlands Group

City of Salinas

Ag Land Trust

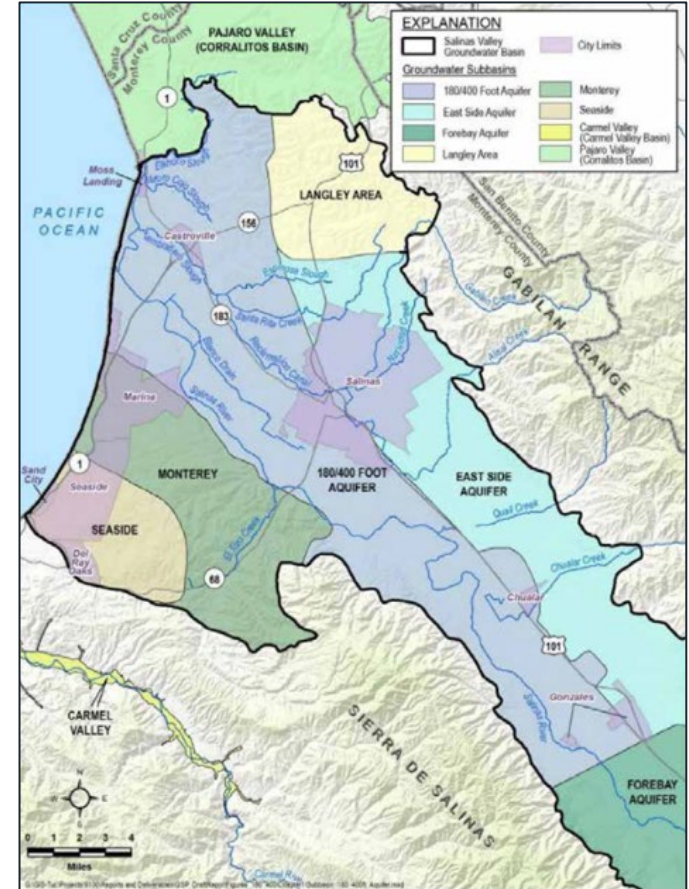
Elkhorn Slough Foundation

Amah Mutsun Land Trust

Resource Conservation District of Monterey
County

Monterey County Water Resources Agency

Castroville Community Services District



Salinas Valley: Program Vision and Approach



Multi-benefit Land Repurposing Plan all partners and collaborators

Project Development & Prioritization

Salinas Valley Basin Groundwater Sustainability Agency
Preservation Inc.
City of Salinas
Greater Monterey IRWM Group
Growers/ Ag industry

Define: how projects are incorporated into GSA and regulatory programs, how benefits are quantified, how long term success is assured

Land Acquisition

Ag Land Trust
Elkhorn Slough Foundation
Big Sur Land Trust
Amah Mutsun Land Trust
Resource Conservation District of Monterey County

Establish Land Access Agreements and long-term land management strategy.
Acquire 70-120 acres of Agriculture lands for repurposing.

Project Planning & Design

Resource Conservation District of Monterey County
Central Coast Wetlands Group
Monterey County
Water Resources Agency
Castroville Community Services District
Growers/Ag industry

Develop site design plans to best address site specific opportunities and constraints.
Quantify environmental benefits of projects
Draft O/M guidance.

Statewide Support Entity

Statewide Support Entity Tasks



Block Grantee Support

Provide training and technical assistance to block grant recipients; connect block grant recipients to resources and Implementation Partners



Community Engagement Support

Engage Disadvantaged Communities, Tribes, and Social Disadvantaged Farmers and Ranchers; support survey development; and support monitoring of engagement success



Peer-Learning Facilitation

Facilitate community of practice, develop learning agendas



Monitoring & Reporting

Support development of reporting metrics and theories of change, reporting tools, and coordinate with DOC



Communications

Coordinate external communication about program work and help build awareness of the Program

Grants to Tribes

- \$5M Dedicated to Tribal Led Projects
- Maximum Award: None
- Solicitation Period: Rolling, non-competitive
- Funding to plan for, develop, or implement multibenefit agricultural land repurposing projects

THANK YOU

Questions?



Keali'i Bright
Division Director | Land Resource Protection
Kealii.Bright@conservation.ca.gov