



Sustainable Groundwater Management Act (SGMA)



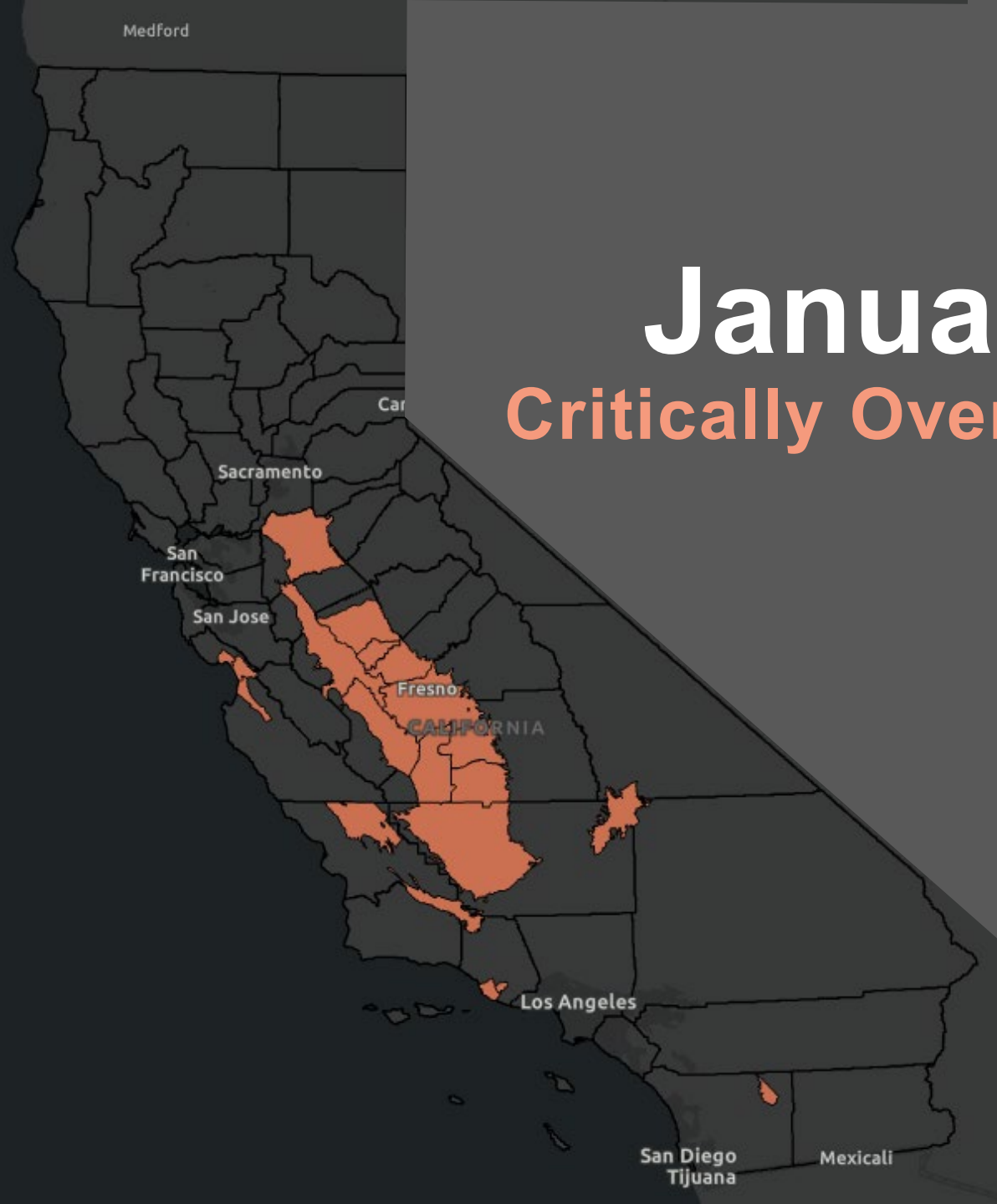
January 15, 2020

California Water Commission

Board Backstop Basics

- 1 Board only steps in when local efforts fail.
- 2 Temporarily protects the basin until locals come up-to-speed.
- 3 Backstop is triggered by SGMA deadlines.





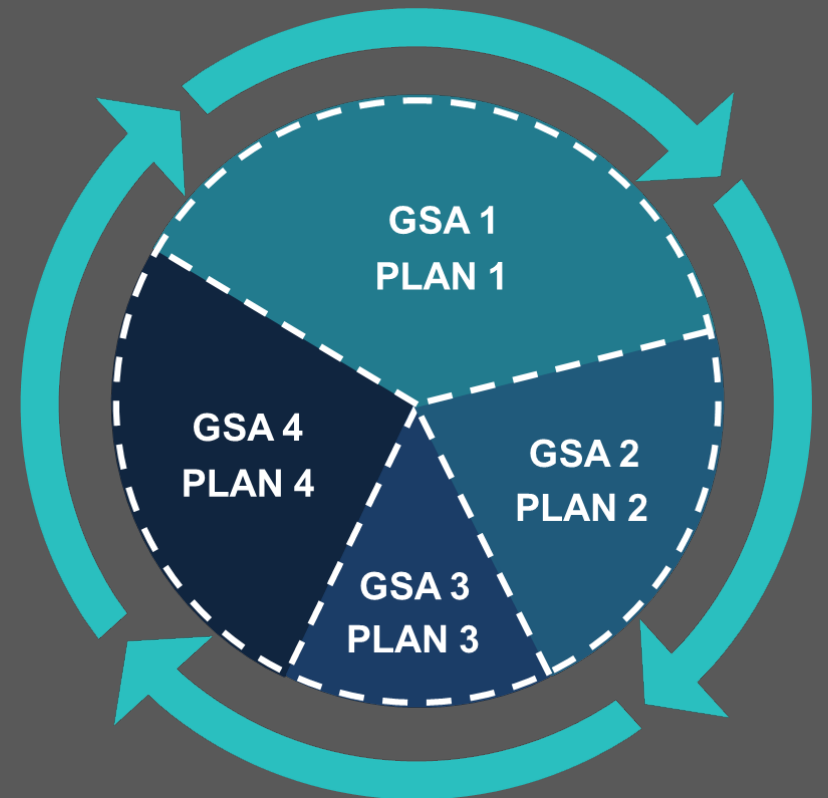
January 2020

Critically Overdrafted Basins

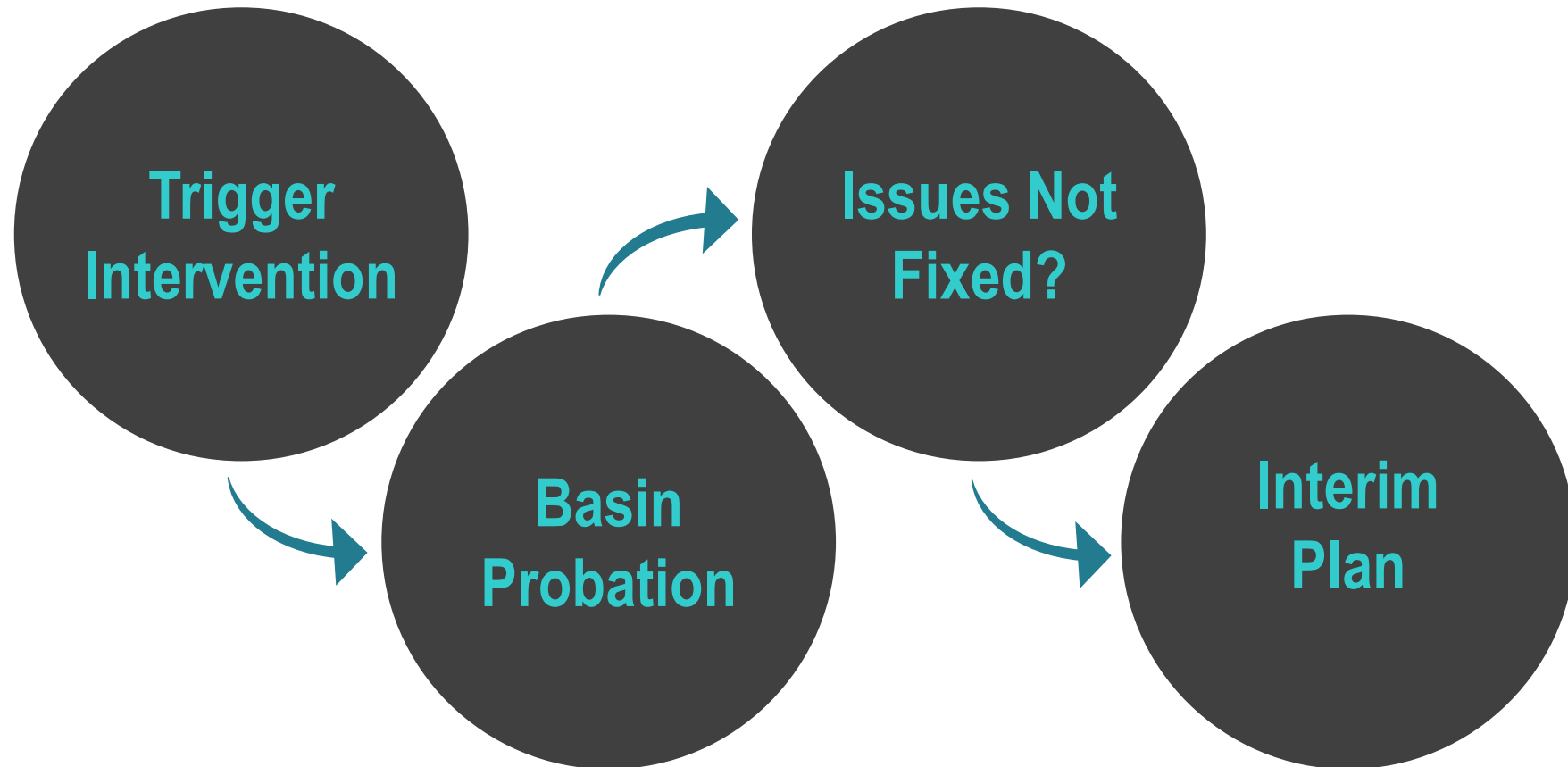
TRIGGERING the BACKSTOP



AVOIDING the BACKSTOP



Backstop



Probationary groundwater BASIN



State Water Board makes decisions



Opportunity to fix issues



Board gathers data



May require meters



Extraction **REPORTS**

Reports are submitted annually.

Reports require...

- well location & capacity
- monthly extraction volumes
- place & purpose of use

Reports must be filed electronically.

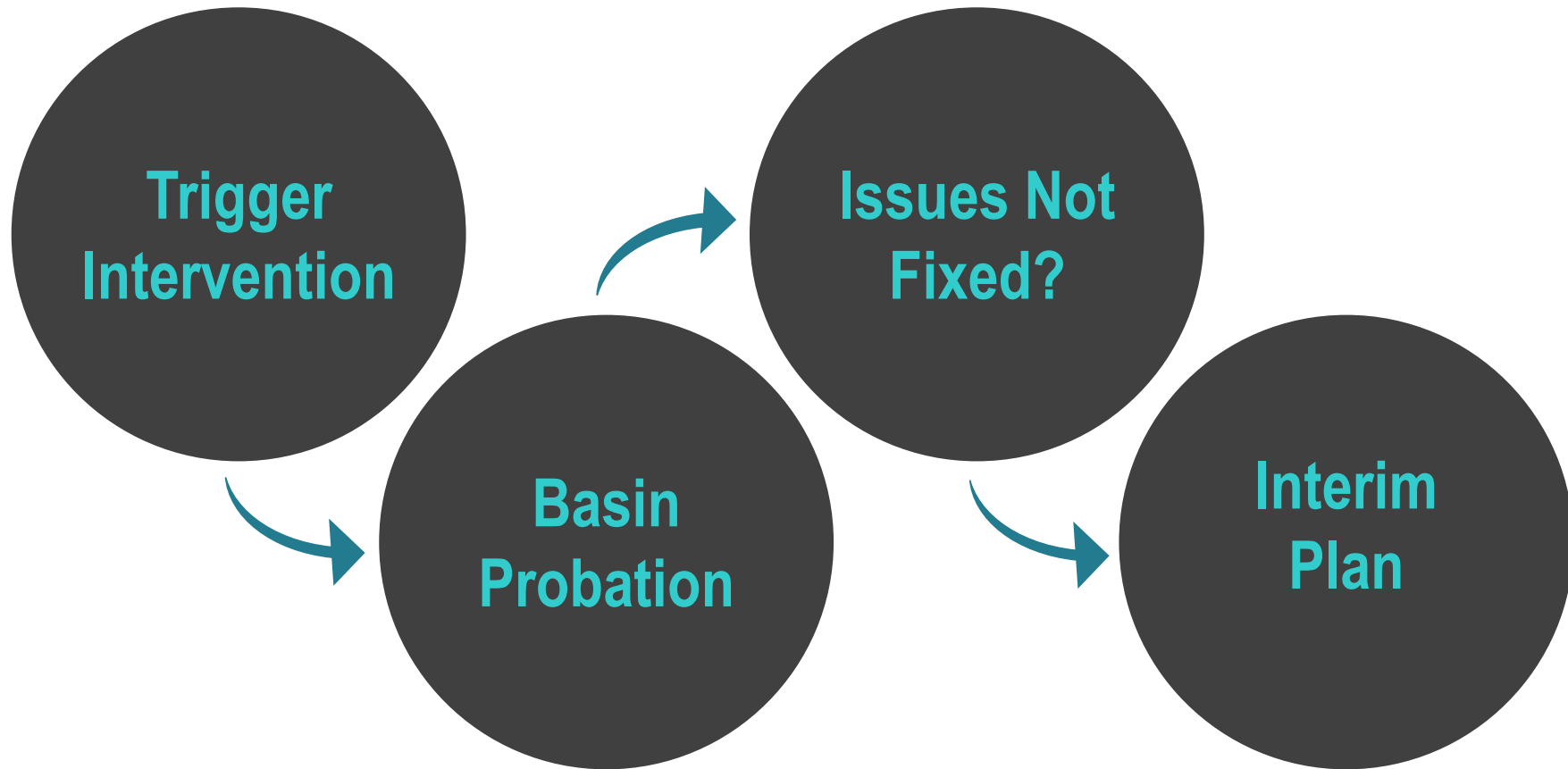
Fees required with each report.

FEES beginning in Water Year 2018



*special studies extra

Backstop





Corrective Actions



Enforcement

**Interim
PLAN**

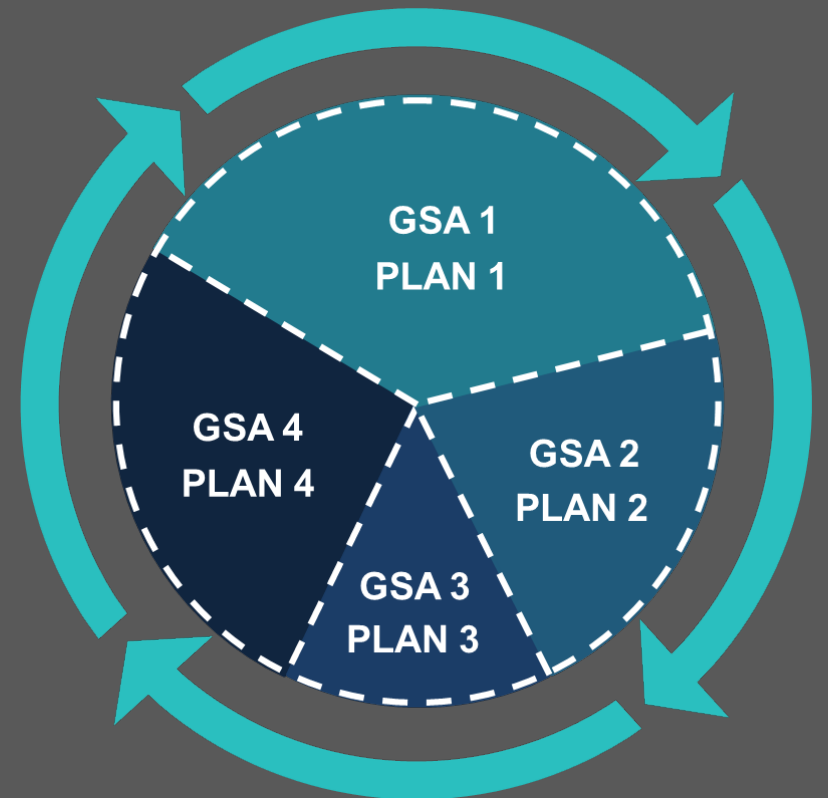


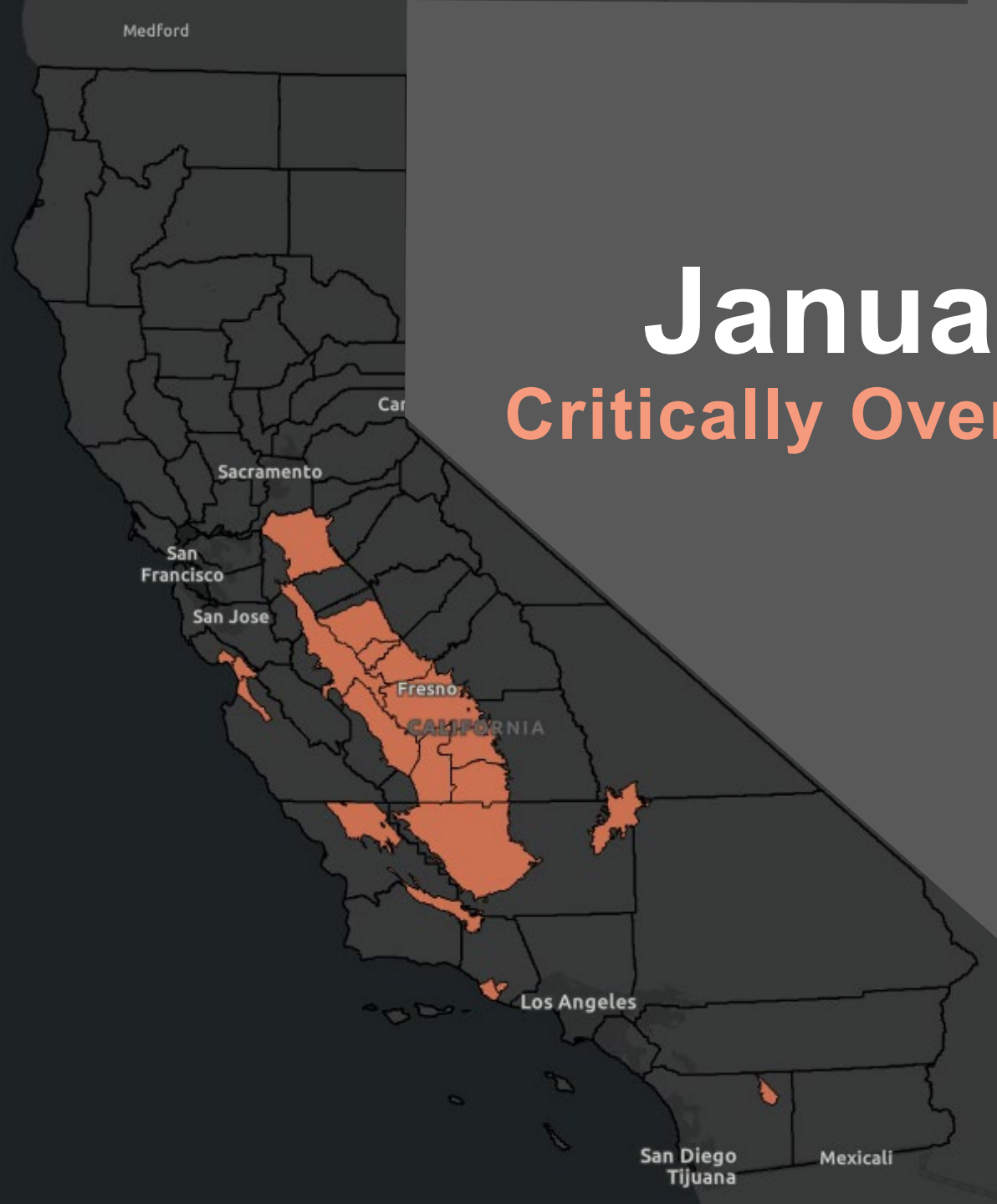
**Monitoring
Plan**



Schedule

AVOIDING the BACKSTOP





January 2020

Critically Overdrafted Basins

Medford

Car

Sacramento

San Francisco

San Jose

Fresno

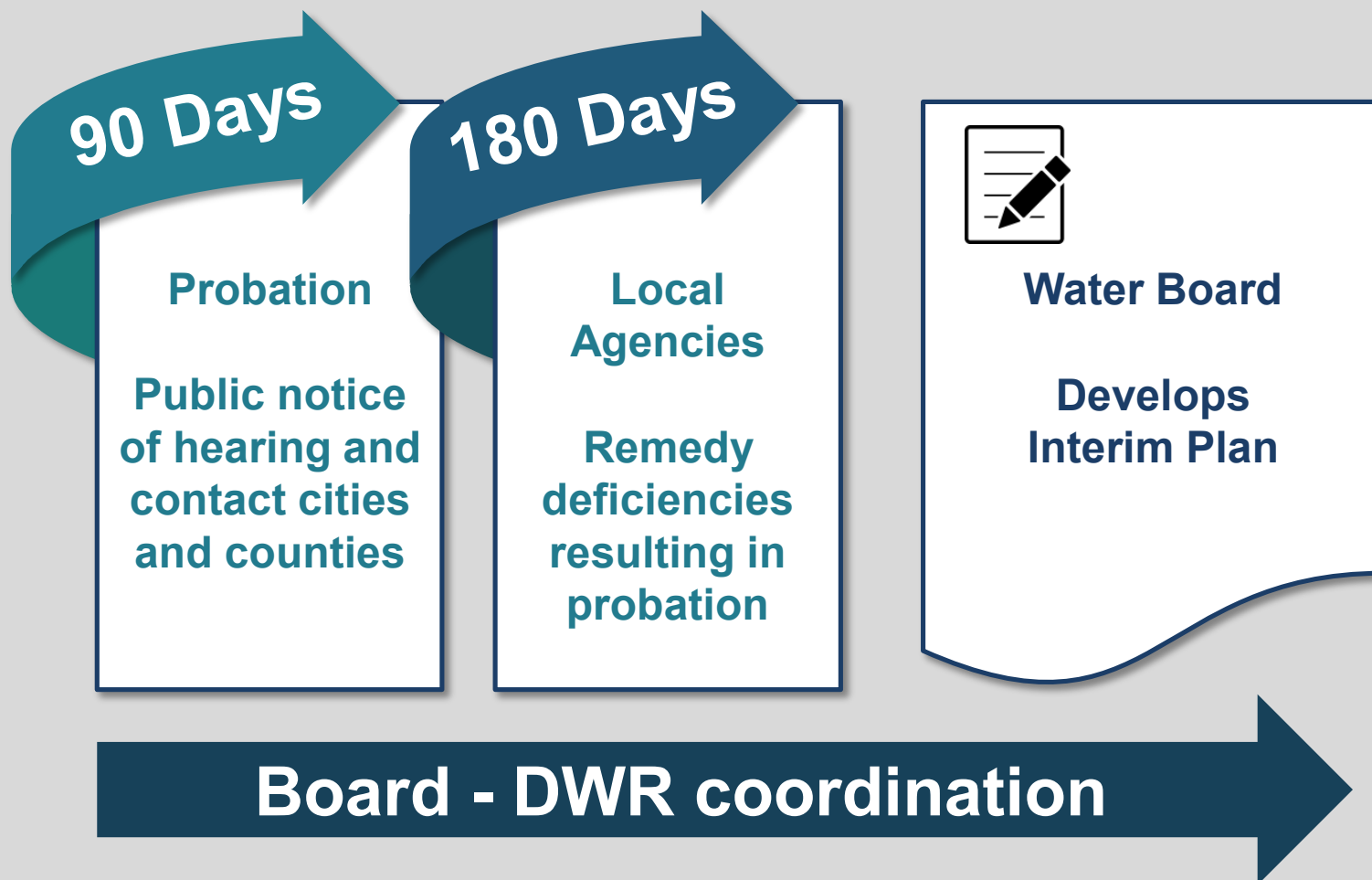
CALIFORNIA

Los Angeles

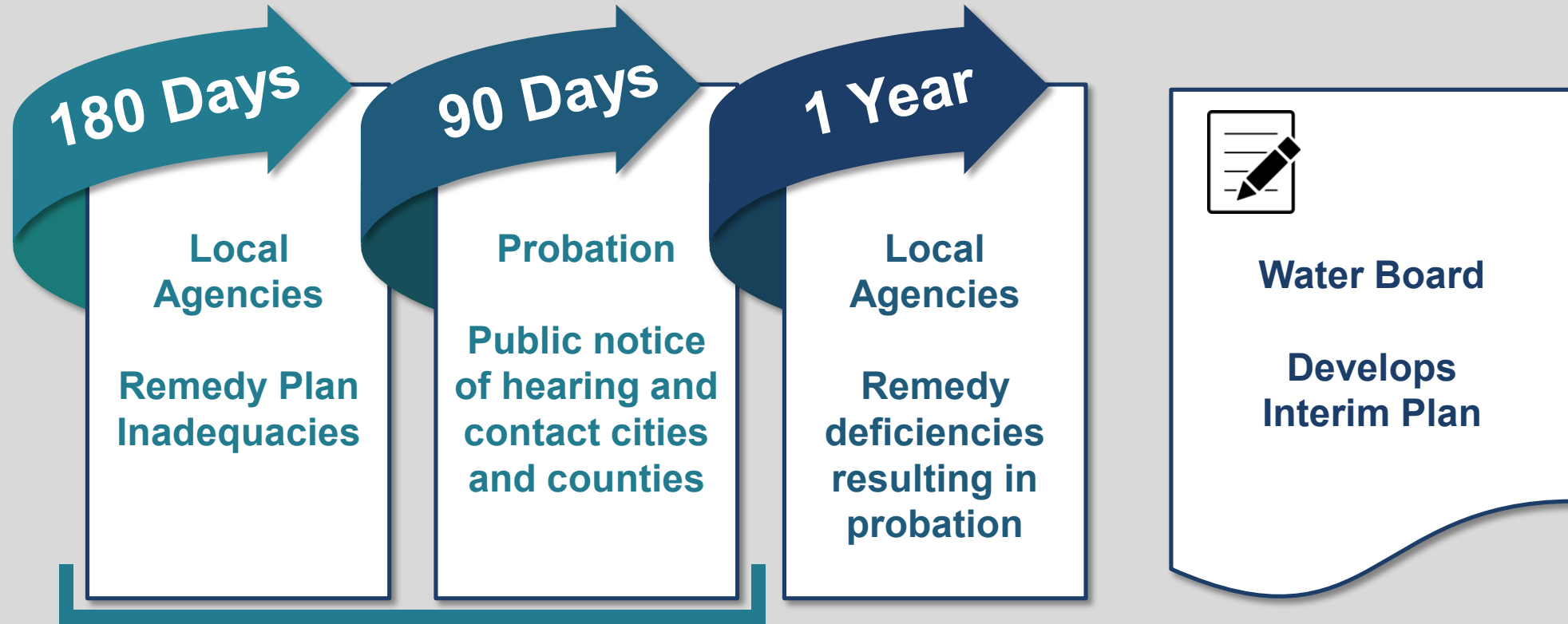
San Diego
Tijuana

Mexicali

NO Plan



INADEQUATE Plan



Board - DWR coordination

SGMA Fact Sheets

- Probationary designation and groundwater regulation
- Stakeholder inclusion
- State and regional boards basics
- Funding opportunities for GSAs
- Purpose of use for underground storage projects
- **Water Quality FAQ**
- More coming...

“ Groundwater **management**
in California is best
accomplished **locally.** ”

Former Governor Jerry Brown

Natalie Stork
SGMA@waterboards.ca.gov
(916) 322-6508

**Groundwater Management
Program**
www.waterboards.ca.gov/gmp