

# 2018 Basin Boundary Modifications

California Water Commission

January 16, 2019



CALIFORNIA DEPARTMENT OF WATER RESOURCES  
SUSTAINABLE GROUNDWATER  
MANAGEMENT OFFICE

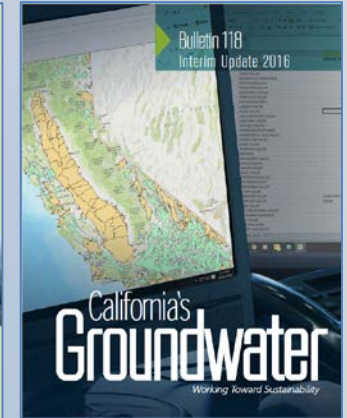
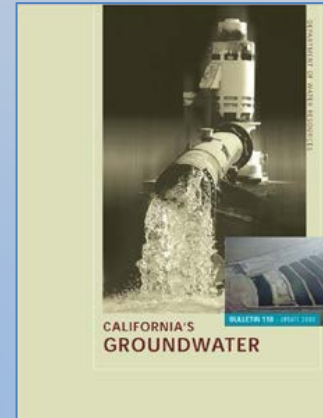
# Introduction

- Background
  - Sustainable Groundwater Management Act
  - Basin Boundary Emergency Regulations
- Purpose
- What are Basins?
- 2018 Basin Boundary Modifications



# Background

- Groundwater Basins and Subbasins are defined in Bulletin 118
- SGMA – Applicable to all basins, as defined in B118
- 10722.2 – Established process for local agency to request modifications to basin boundaries
- Basin Boundary Emergency Regulations (October 2015)



CALIFORNIA CODE OF REGULATIONS  
TITLE 23. WATERS  
DIVISION 2. DEPARTMENT OF WATER RESOURCES  
CHAPTER 1.5. GROUNDWATER MANAGEMENT  
SUBCHAPTER 1. GROUNDWATER BASIN BOUNDARIES

# Purpose

California Water Code  
10722.2(e) - The department shall provide a copy of its draft revision of a basin's boundaries to the California Water Commission. The California Water Commission shall hear and comment on the draft revision within 60 days after the department provides the draft revision to the commission.



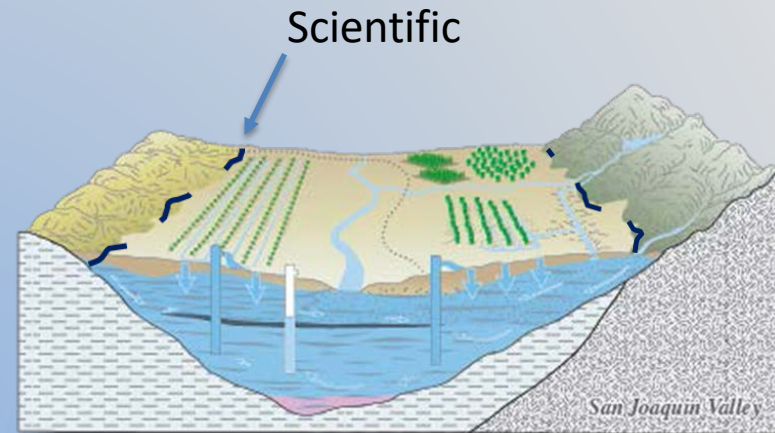
California   
**WATER COMMISSION**

# Groundwater Basin Definition

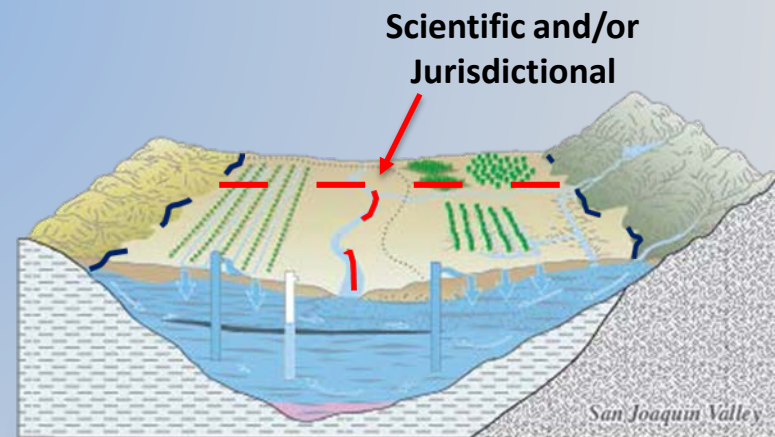
**Basin** – Generally an aquifer or stacked aquifers with reasonably defined boundaries in a lateral direction, and a definable bottom.

**Aquifer** – Body of porous and permeable sediment or sedimentary rock that yields significant quantities of groundwater.

**Subbasin** – Generally any subdivision of a basin based on geologic and hydrologic barriers or institutional boundaries.



Modified from Faunt, 2009



# 2018 Basin Boundary Modifications

## Basin Boundary Modification Request System (BBMRS)

The screenshot displays the web portal for the Basin Boundary Modification Request System (BBMRS). At the top, the header includes the California State Water Resources Control Board logo (CA.GOV) and the text "Department of Water Resources SGMA PORTAL - BASIN BOUNDARY MODIFICATION REQUEST SYSTEM". A "Sign In" button is visible on the right. Below the header is a navigation menu with options: Home, GSA, GSP, Alternatives, Adjudicated Areas, and Basin Modification (highlighted in orange). The main content area is titled "BB Modification Request System" and is divided into several sections:

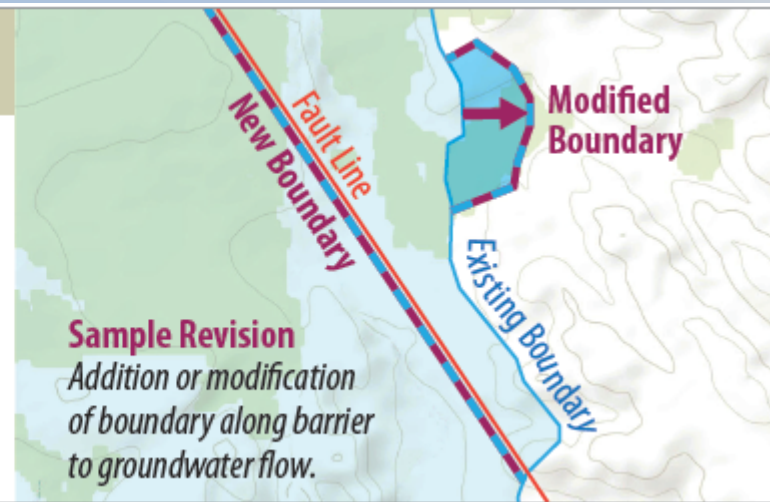
- Initial Notification:** Contains two circular icons: "List of Submitted Notifications" and "View Map of Submitted Notifications".
- Modification Request:** Contains two circular icons: "List of Submitted Modifications" and "View Map of Submitted Modifications".
- GSA/Local Agency Access:** A section for returning users to sign in or make changes, with links for "sign in here", "click here" for new users, and "recover it here" for password recovery.
- Basin Boundary Modification Resources:** A list of resources including "Print Request Template", "Download Water Agency Shape File", and "The Basin Boundary Modification Emergency Regulations".
- Initial Notification Submission Instructions:** A list of instructions for submitting notifications, including "Establish user account", "Complete online form", "Submit Notification following instructions in form", and "Any questions please contact" with contact information for Timothy Godwin and Dane Mathis.

<https://sgma.water.ca.gov/basinmod/>

# Examples of Modification Categories

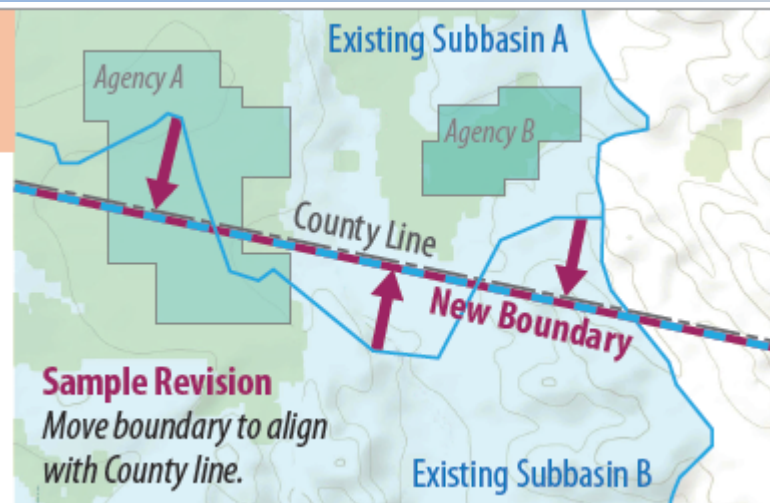
## SCIENTIFIC

A **scientific** revision to a basin boundary consists of the addition, deletion, or relocation of a boundary based on the geologic or hydrologic conditions that define that basin.



## INTERNAL (Jurisdictional)

**Internal Boundary Revision** refers to any boundary modification that would adjust the location of a boundary between subbasins, within a basin, or the shared boundary between adjacent basins.

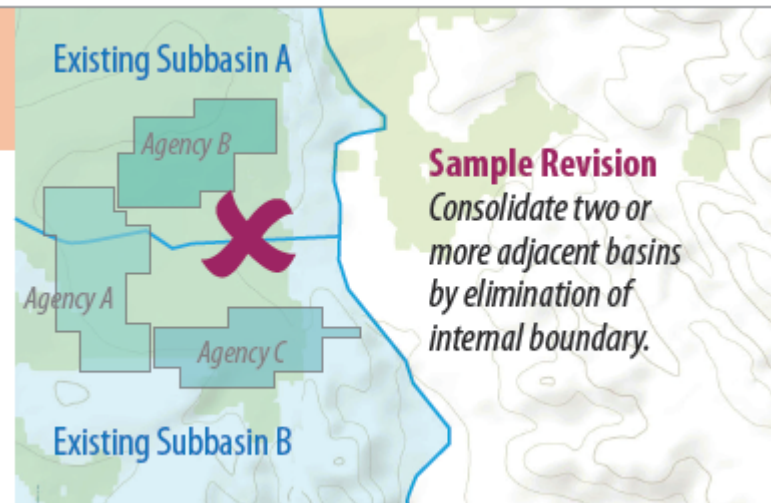


# Examples of Modification Categories

## BASIN CONSOLIDATION

*(Jurisdictional)*

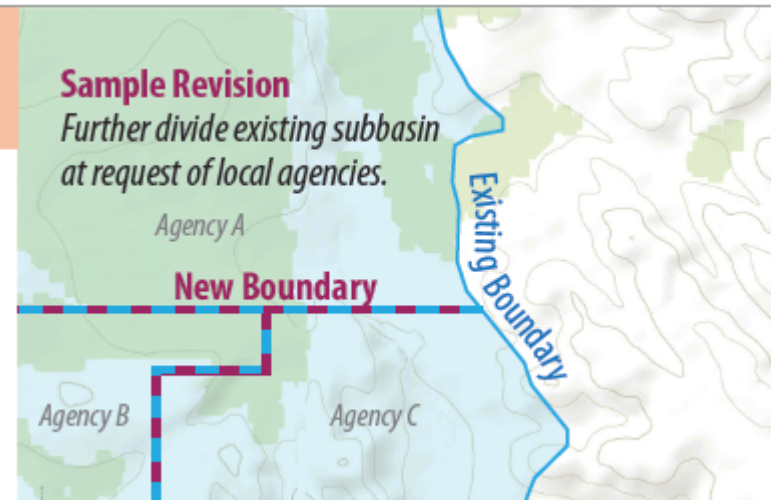
**Basin Consolidation** refers to any boundary modification that would reduce the number of subbasins within a basin, or merge two or more adjacent basins, but would change only shared boundaries and would not change the external boundary of any basin or subbasin.



## BASIN SUBDIVISION

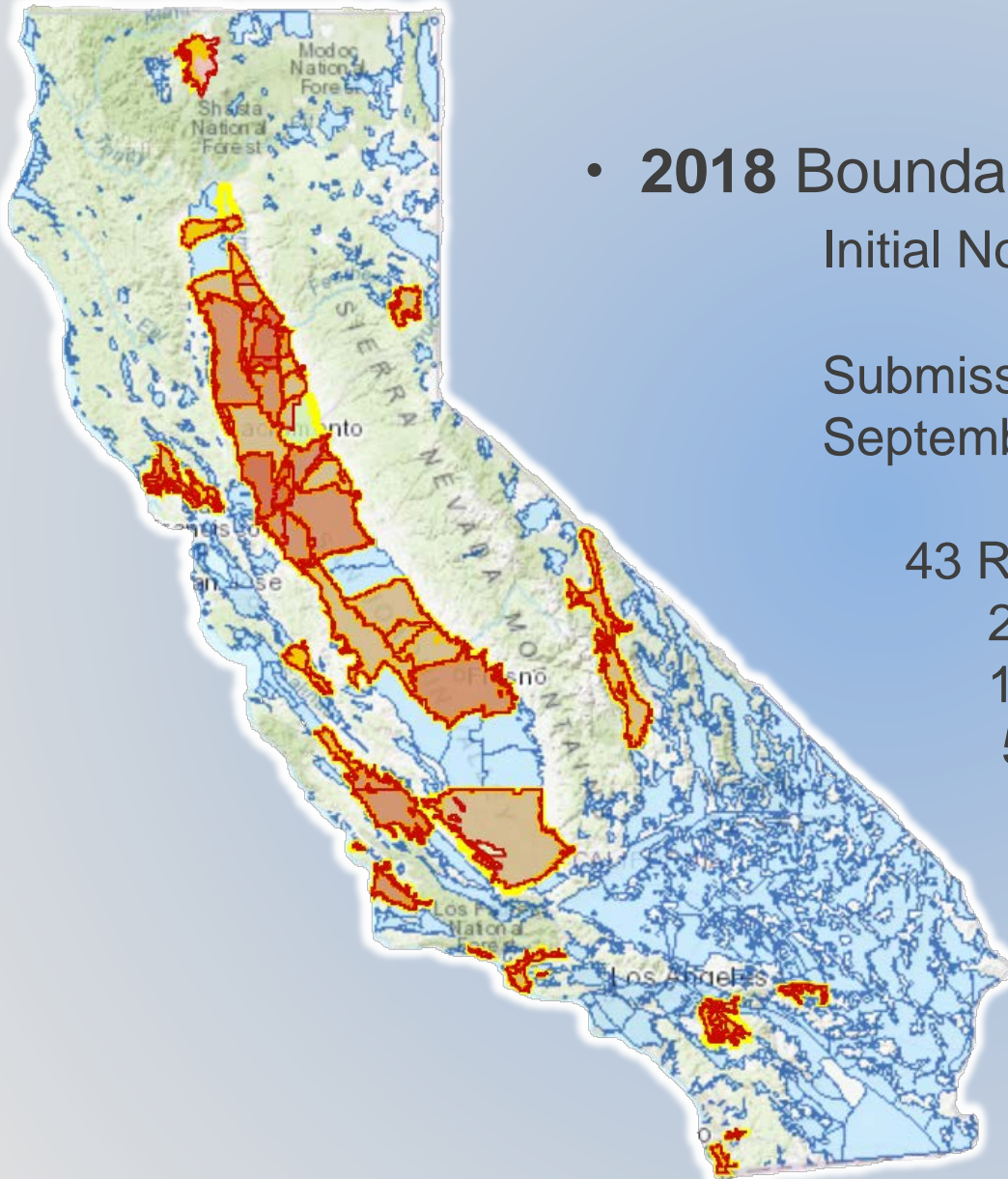
*(Jurisdictional)*

**Basin Subdivision** refers to any boundary modification that would increase the number of subbasins within a basin or subbasin.





# Basin Boundary Modifications



- **2018** Basin Boundary Modifications

Initial Notification - July 2017

Submission Period - January 1 to  
September 28, 2018

43 Requests

23 Jurisdictional

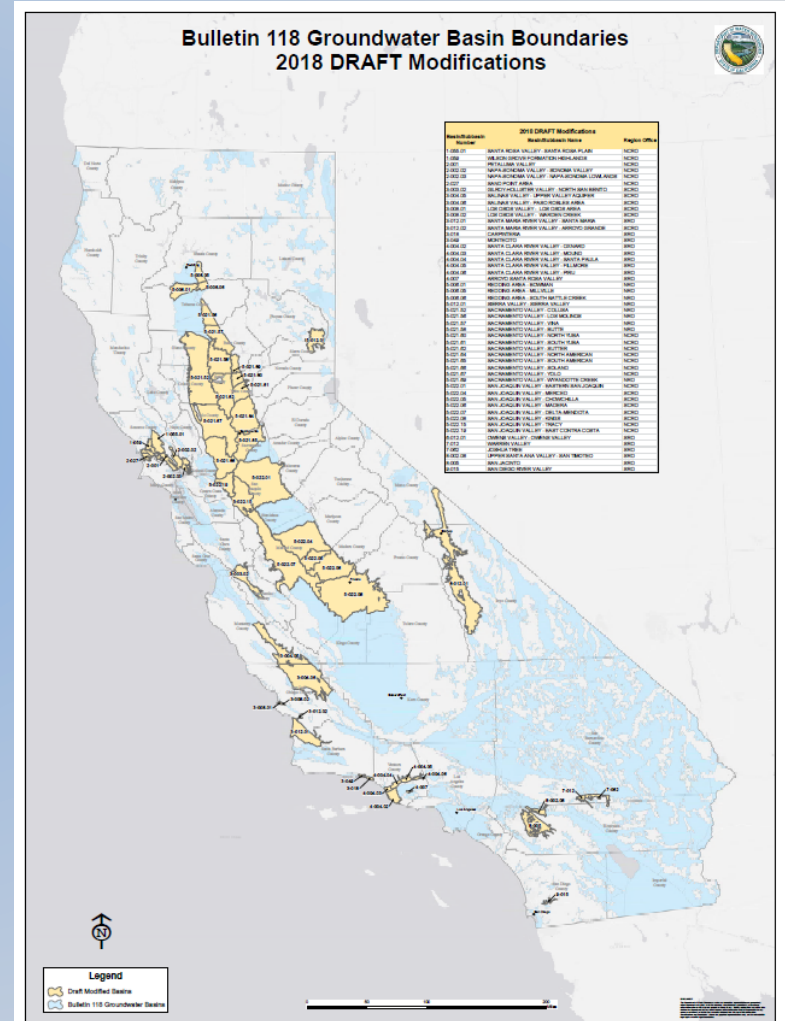
15 Scientific

5 Jurisdictional/Scientific

# 2018 Basin Boundary Modifications

## Summary of Draft Decisions (November 29, 2018)

- 33 Approve
- 7 Deny
- 3 Approve with Deny Portion



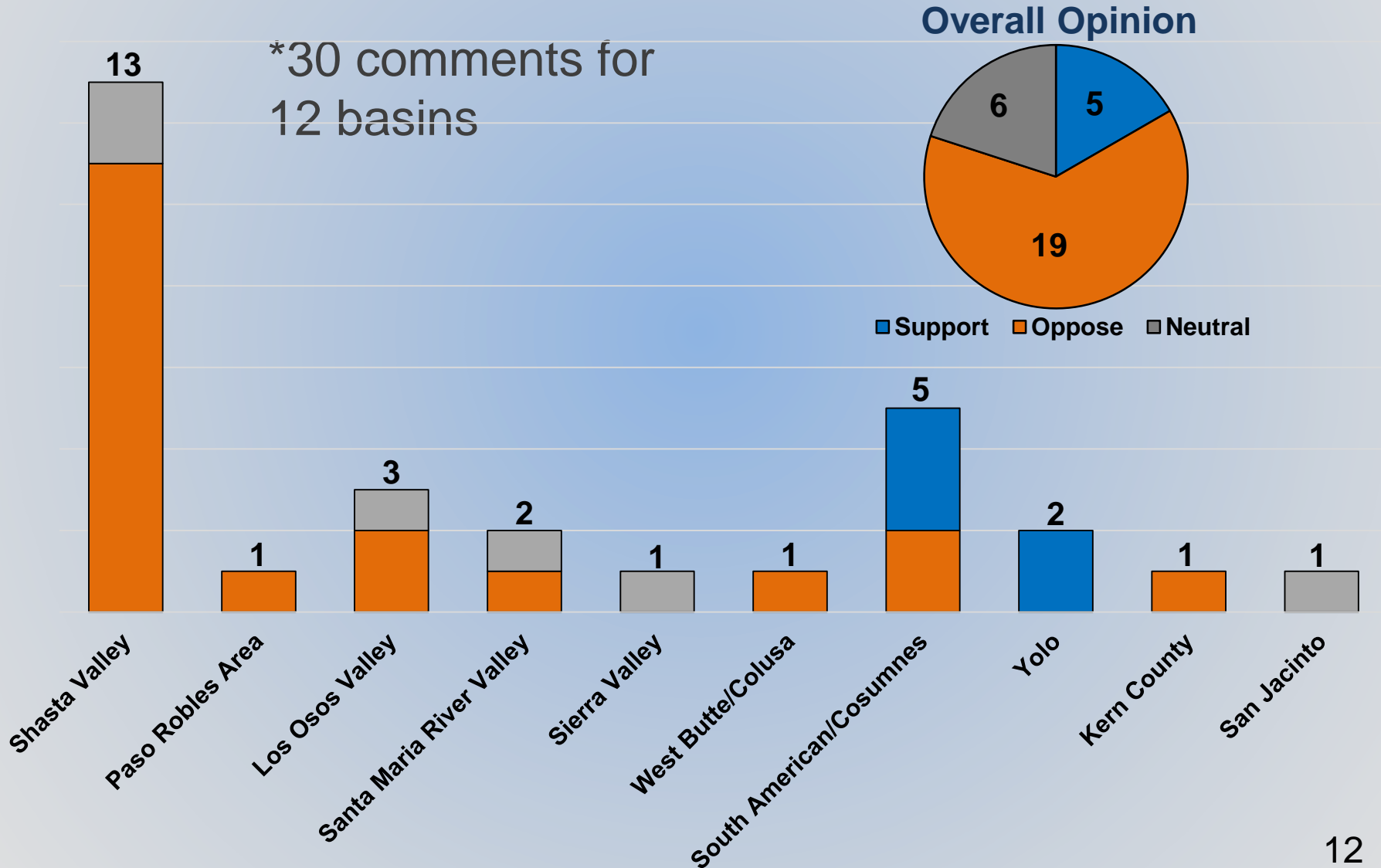
# Public Comment Opportunity

1. Requesting Agency's Notice and Consultation period
2. Agency's submission of Request (30 days)
3. Comment Period on DWR's Draft Decisions  
November 29, 2018 to January 4, 2019
4. DWR Public Meeting  
December 11, 2018
5. California Water Commission Meeting  
January 16, 2019

# Public Comments on DWR Draft Decisions

(November 29, 2018 – January 4, 2019, includes Public Meeting)

\*30 comments for  
12 basins





# **Notable Basin Boundary Modifications**

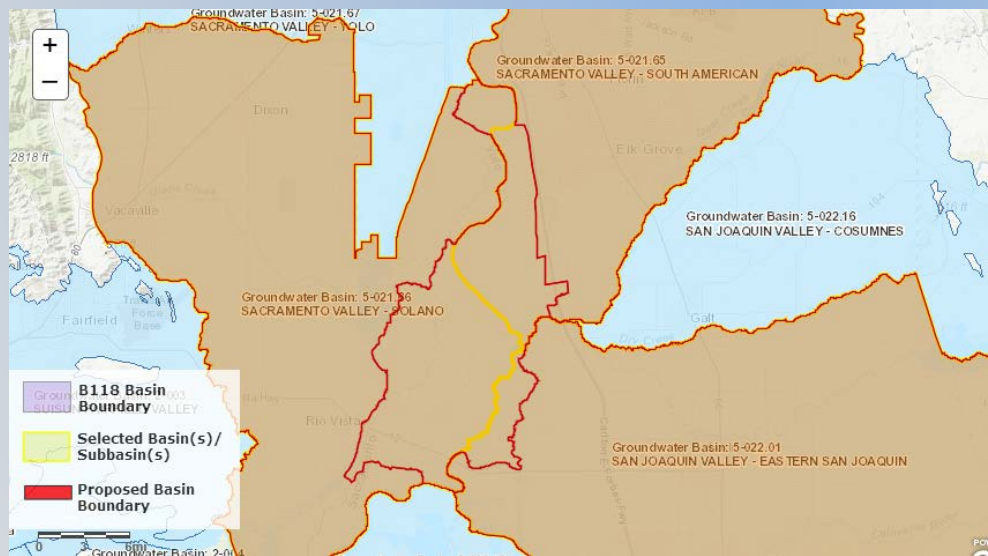
# Selected Basins and Comments

**Basin(s):** 5-021.65 SACRAMENTO VALLEY - SOUTH AMERICAN, 5-022.01 SAN JOAQUIN VALLEY - EASTERN SAN JOAQUIN, 5-021.66 SACRAMENTO VALLEY - SOLANO

**Requesting Agency:** Northern Delta Groundwater Sustainability Agency

**Draft Decision:** Deny

**Rationale for Deny:** Did not provide the required 3/4 support of local agencies and public water systems in affected basins.



**Comments on Agency Request:** 3 support (RD, Levy District, Solano GSA)

**Comments on DWR Draft Decision:** None

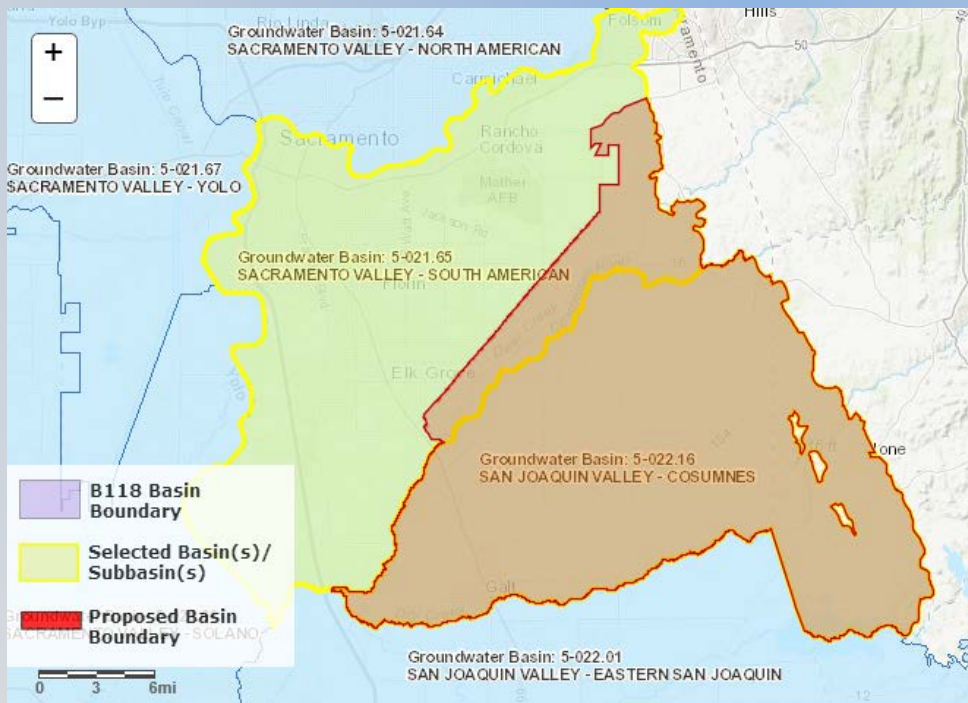
# Selected Basins and Comments

**Basin(s):** 5-021.65 SACRAMENTO VALLEY - SOUTH AMERICAN, 5-022.16 SAN JOAQUIN VALLEY - COSUMNES

**Requesting Agency:** Sloughouse Resource Conservation District

**Draft Decision:** Deny

**Rationale for Deny:** Did not demonstrate proposed modification would result in improved groundwater management. Opposition to proposal by Sacramento Central Groundwater Authority and City of Sacramento.



**Comments on Agency Request:** 4 support (public), 4 oppose (2 public, SCGA, City of Sacramento)

**Comments on DWR Draft Decision:** 2 oppose (SRCD), 3 support (2 SCGA, 1 public)



# Updated Draft Decisions

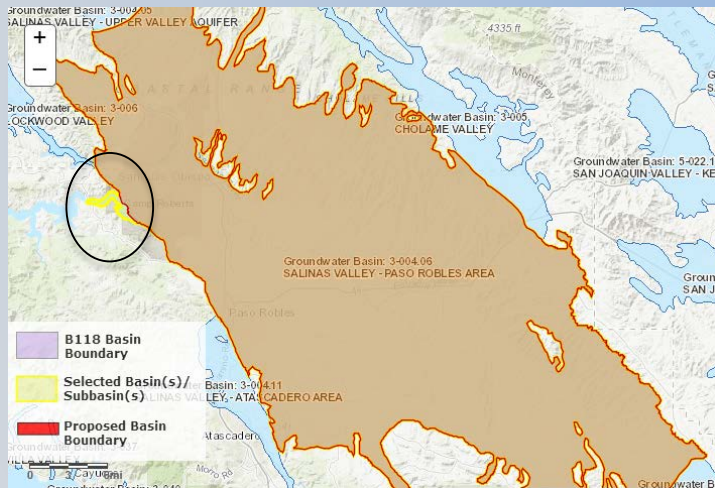
# Updated Draft Decisions

**Basin(s):** 3-004.06 SALINAS VALLEY - PASO ROBLES AREA

**Requesting Agency:** Heritage Ranch Community Services District

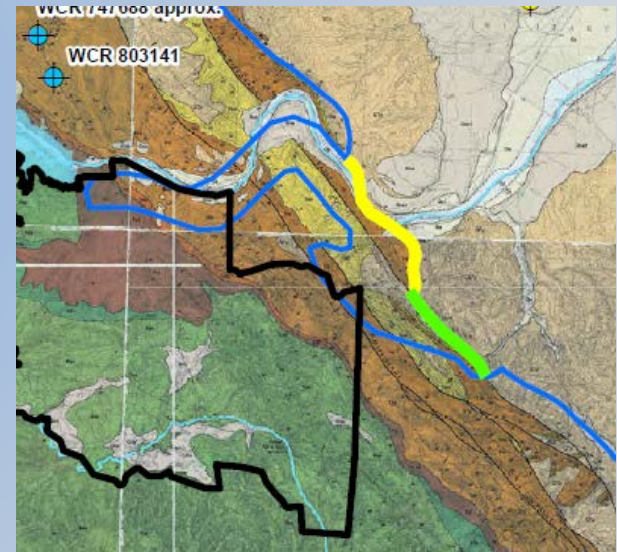
**Updated Draft Decision:** Approve

**Updated Rationale:** Additional scientific evidence and technical information supports the external boundary modification to coincide with the known limits of the primary aquifer.



Comments on Agency Request: None

Comments on DWR Draft Decision: 2 oppose (HRCSD)



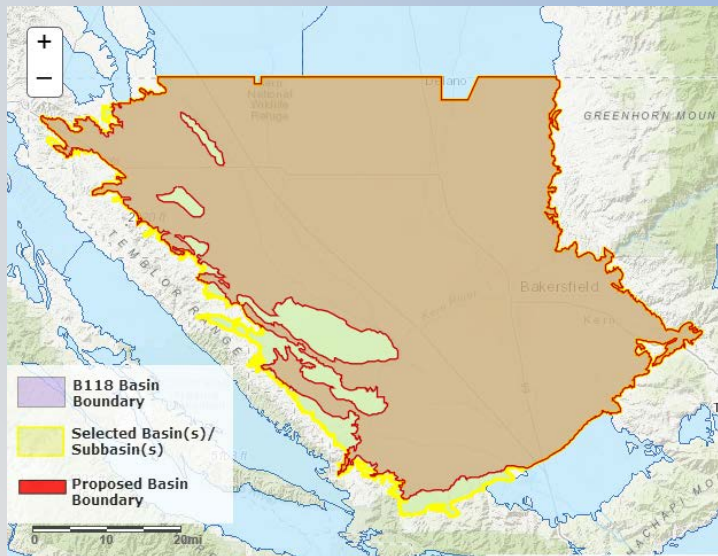
# Updated Draft Decisions

**Basin(s):** 5-022.14 SAN JOAQUIN VALLEY - KERN COUNTY

**Requesting Agency:** West Kern Water District

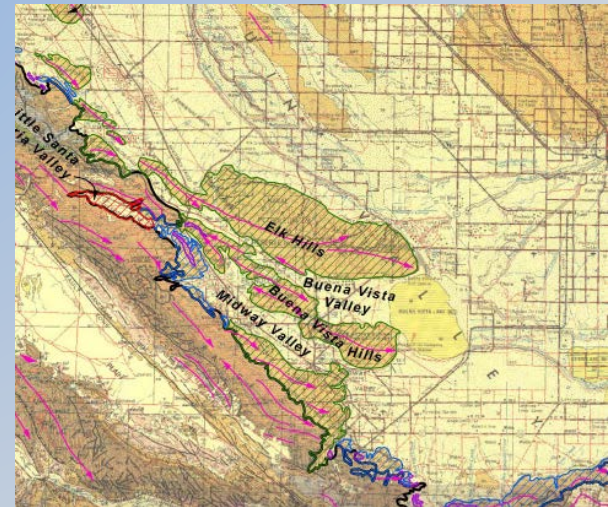
**Updated Draft Decision:** Approve, Deny Portions

**Updated Rationale:** Additional scientific evidence and technical information supports the modification to remove existing mapped Miocene and older rock units, and also alluvium mapped as QP (with one exception). The request to subdivide and create Little Santa Maria Valley as subbasin is not supported with sufficient scientific information. The technical information to support removal of mapped QP with anticlines is not sufficient and does not demonstrate the referenced units are not aquifer or basin.



Comments on  
Agency Request: 1  
support (private)

Comments on DWR  
Draft Decision: 1  
oppose (WKWD)



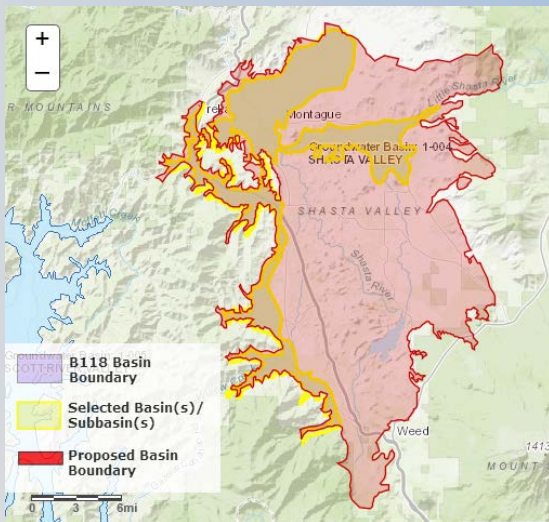
# Updated Draft Decisions

**Basin(s):** 1-004 SHASTA VALLEY

**Requesting Agency:** Siskiyou County Flood Control and Water Conservation District

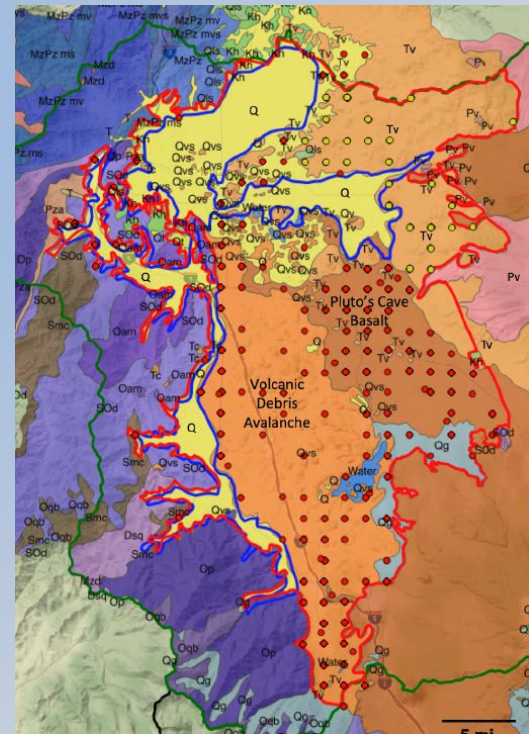
**Updated Draft Decision:** Approve

**Updated Rationale:** Additional scientific evidence and technical information supports the modification to include the expanded area which meets regulatory definition of 'aquifer' and 'basin'.



**Comments on Agency Request:** 2 support (public, TNC), 1 neutral (public)

**Comments on DWR Draft Decision:** 11 oppose (public, Siskiyou County, Watermaster, TNC, McCloud Watershed Council, Clean Water Action, Cal Trout, Karuk Tribe), 2 neutral (SWRCB and DFW –support expansion)



# 2018 Basin Boundary Modifications

## Updated Draft Decisions

35 Approve, 4 Deny, 4 Approve with Deny Portion

## Final Modifications – February 2019

## Information

### Basin Boundary Website

<https://water.ca.gov/Programs/Groundwater-Management/Basin-Boundary-Modifications>

### SGMA Portal- Basin Boundary Modification Request System

<https://sgma.water.ca.gov/basinmod/>

## Contact

Project Lead

Dane Mathis

[Dane.Mathis@water.ca.gov](mailto:Dane.Mathis@water.ca.gov)

(559) 230-3354

