

Memorandum

Date: January 14, 2019

To: California Water Commission

From: Department of Water Resources, Sustainable Groundwater Management Office

Subject: 2018 Basin Boundary Modifications – UPDATE to Draft Decisions

On January 5, 2019, the Department of Water Resources (DWR) provided a memorandum (memo) to the California Water Commission (CWC) that summarized our Draft Decisions for the 2018 Basin Boundary Modifications. The information herein is intended to notify the CWC of recent changes to the Draft Decisions and to further support the “hear and comment” function at the scheduled meeting on January 16, 2019. Please consider this memo as a supplement to the January 5 memo.

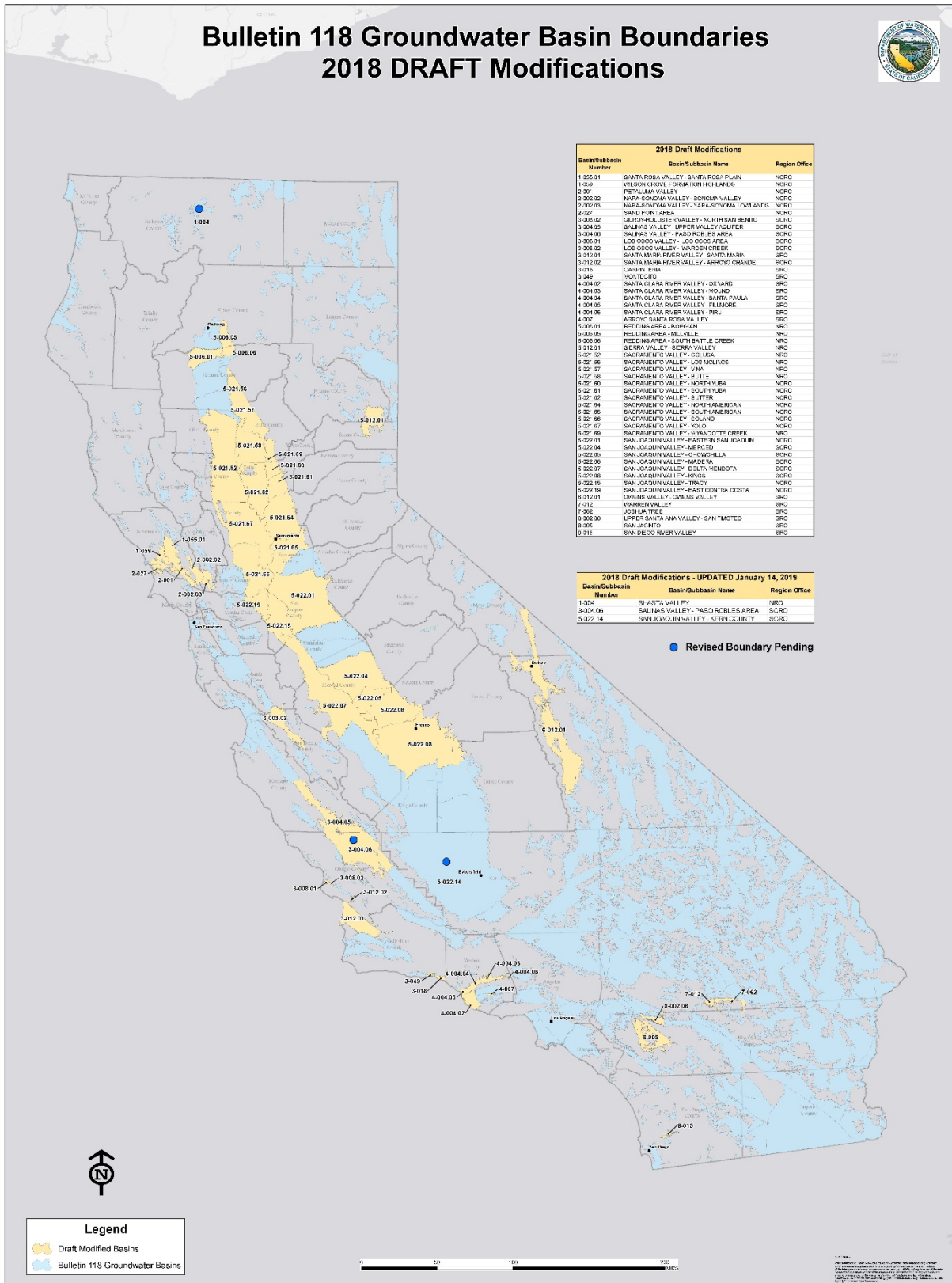
As described in the January 5 memo, the 2018 Basin Boundary Draft Decision public comment period started November 29, 2018 and recently closed on January 4, 2019. DWR also held a public meeting in Sacramento on December 11, 2018. DWR received a total of 30 comments on 12 basins. Three of the comments contained clarifying technical information to support the scientific modification requests for three basins (Shasta Valley, Salinas Valley – Paso Robles Area, and San Joaquin Valley – Kern County). The technical information was reviewed by DWR staff to evaluate if the information met the basin boundary regulations and was adequate to support changing the draft decisions.

The clarifying information submitted by the requesting agencies was deemed to support changing the draft decisions of Deny to Approve for both Shasta Valley and Paso Robles Area basins. For Kern County subbasin, the clarifying information supports changing the draft decision from Deny to Approve with Deny portion. For the 43 modification requests, the recent updated draft decisions now total 35 approved, 4 denied, and 4 partially approved.

The following attachments are included for your reference:

- Figure 1 – Updated Approved 2018 Basin Boundary Modifications Draft Decisions
- Updated Summary Table of 2018 Basin Boundary Modifications Draft Decisions
- Updated Single Page Summaries for Shasta Valley, Paso Robles Area, and Kern County

Figure 1 – Updated Approved 2018 Basin Boundary Modifications Draft Decisions



Source: 1. Bureau of Reclamation, "Mapping Groundwater Basins in California," 2010. 2. Bureau of Reclamation, "State Water Resources Control Board, 2018 Bulletin 118 Groundwater Basin Boundaries." No. 10-10-18

2018 Basin Boundary Modifications - Draft Decisions
November 29, 2018 (UPDATED January 14, 2019)

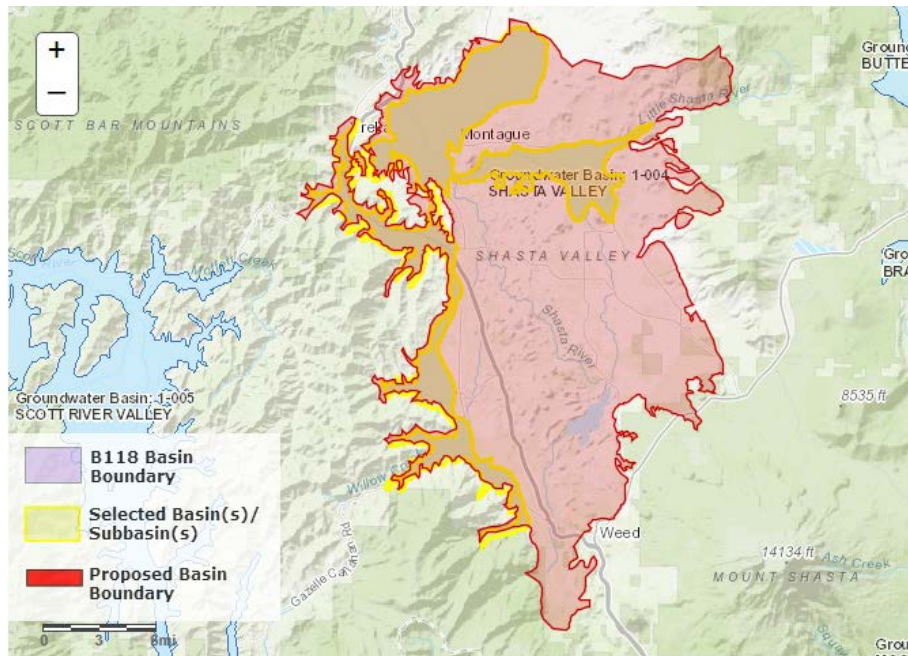
Basin(s)/Subbasin(s)	Requesting Agency	Modification Type	Draft Decision	Basis for Denial	Notes
SANTA ROSA PLAIN WILSON GROVE FORMATION HIGHLANDS	City of Sebastopol	Jurisdictional Internal	Approve	NA	Request met regulatory criteria.
WILSON GROVE FORMATION HIGHLANDS PETALUMA VALLEY	City of Petaluma	Jurisdictional Internal	Approve	NA	Request met regulatory criteria.
WILSON GROVE FORMATION HIGHLANDS SAND POINT AREA	Marin County	Jurisdictional Internal	Approve	NA	Request met regulatory criteria.
SONOMA VALLEY NAPA-SONOMA LOWLANDS	Sonoma Valley Groundwater Sustainability Agency	Jurisdictional Internal	Approve	NA	Request met regulatory criteria.
BOLSA AREA HOLLISTER AREA SAN JUAN BAUTISTA AREA TRES PINOS VALLEY	San Benito County Water District	Jurisdictional Consolidation	Approve	NA	Request met regulatory criteria.
UPPER VALLEY AQUIFER PASO ROBLES AREA	Salinas Valley Basin Groundwater Sustainability Agency	Jurisdictional Internal	Approve	NA	Request met regulatory criteria.
CARPINTERIA MONTECITO	Montecito Water District	Jurisdictional Internal	Approve	NA	Request met regulatory criteria.
BOWMAN ROSEWOOD	Tehama County Flood Control and Water Conservation District	Jurisdictional Consolidation	Approve	NA	Request met regulatory criteria.
MILLVILLE SOUTH BATTLE CREEK	Tehama County Flood Control and Water Conservation District	Jurisdictional Consolidation	Approve	NA	Request met regulatory criteria.
TRACY	Brentwood City Of	Jurisdictional Subdivision	Approve	NA	Request met regulatory criteria.
COLUSA WEST BUTTE	Colusa Groundwater Authority	Jurisdictional Internal	Approve	NA	Request met regulatory criteria.
LOS MOLINOS VINA DYE CREEK	Tehama County Flood Control and Water Conservation District	Jurisdictional Consolidation	Approve	NA	Request met regulatory criteria.
WEST BUTTE EAST BUTTE	Reclamation District No. 1004	Jurisdictional Internal	Approve	NA	Request met regulatory criteria.
WEST BUTTE EAST BUTTE	Butte County Department of Water and Resource Conservation	Jurisdictional Internal Jurisdictional Consolidation	Approve	NA	Request met regulatory criteria.
EAST BUTTE WYANDOTTE CREEK	Butte County Department of Water and Resource Conservation	Jurisdictional Internal	Approve	NA	Request met regulatory criteria.
SUTTER NORTH AMERICAN EAST BUTTE	Sutter County	Jurisdictional Internal	Approve	NA	Request met regulatory criteria.
SOUTH AMERICAN EASTERN SAN JOAQUIN SOLANO	Northern Delta Groundwater Sustainability Agency	Jurisdictional Subdivision	Deny	345.2(d) - Failure to provide all required information.	Agency did not provide the required 3/4 support of local agencies and public water systems in affected basins.
SOUTH AMERICAN COSUMNES	Sloughhouse Resource Conservation District	Jurisdictional Internal	Deny	345.2(a) - May limit opportunity or likelihood of sustainable groundwater management.	Agency did not demonstrate proposed modification would result in improved groundwater management. Opposition to proposal by Sacramento Central Groundwater Authority and City of Sacramento.
SOLANO YOLO	Yolo Subbasin Groundwater Agency	Jurisdictional Internal	Approve	NA	Request met regulatory criteria.
SOLANO TRACY	Sacramento County Water Resources	Jurisdictional Internal	Approve	NA	Request met regulatory criteria.
EASTERN SAN JOAQUIN TRACY	Lathrop City Of	Jurisdictional Internal	Approve	NA	Request met regulatory criteria.
CHOWCHILLA	County of Madera	Jurisdictional Internal	Approve	NA	Request met regulatory criteria.
CHOWCHILLA DELTA-MENDOTA	San Joaquin River Exchange Contractors Water Authority	Jurisdictional Internal	Approve	NA	Request met regulatory criteria.
SHASTA VALLEY	Siskiyou County Flood Control and Water Conservation District	Scientific External	Approve	NA	Request met regulatory criteria.
PASO ROBLES AREA	Heritage Ranch Community Services District	Scientific External	Approve	NA	Request met regulatory criteria.
SANTA MARIA	Santa Barbara County Water Agency	Scientific External	Deny	345.2(c) - Insufficient scientific evidence to support modification.	Agency did not provide adequate technical studies to support external boundaries match adjudication boundaries and did not consistently follow geologic features.

2018 Basin Boundary Modifications - Draft Decisions
November 29, 2018 (UPDATED January 14, 2019)

Basin(s)/Subbasin(s)	Requesting Agency	Modification Type	Draft Decision	Basis for Denial	Notes
SANTA MARIA	Santa Maria Basin Fringe Areas - County of San Luis Obispo Groundwater Sustainability Agency	Scientific External Scientific Internal	Approve Deny Portion (Ziegler Canyon)	345.2(c) - Insufficient scientific evidence to support modification.	Agency did not provide adequate technical studies to demonstrate the referenced fault and geologic contact significantly impede groundwater flow for the Ziegler Canyon area; remaining portions of request were approved.
CARPINTERIA	Carpinteria Valley Water District	Scientific External	Approve	NA	Request met regulatory criteria.
ARROYO SANTA ROSA VALLEY	Arroyo Santa Rosa Basin Groundwater Sustainability Agency	Scientific External	Approve	NA	Request met regulatory criteria.
SIERRA VALLEY	Plumas County	Scientific External	Approve	NA	Request met regulatory criteria.
KINGS	North Kings Groundwater Sustainability Agency	Scientific External	Approve	NA	Request met regulatory criteria.
KERN COUNTY	West Kern Water District	Scientific External	Approve Deny Portion (Little Santa Maria Valley, QP with Anticlines, and QP at Little Santa Maria Valley)	345.2(c) - Insufficient scientific evidence to support modification.	Request to subdivide and create Little Santa Maria Valley as subbasin is not supported with sufficient scientific information. Agency did not provide adequate technical studies to demonstrate the referenced alluvial units (QP with Anticlines) do not represent aquifer or basin.
OWENS VALLEY	Starlite Community Services District	Scientific External	Approve	NA	Request met regulatory criteria.
WARREN VALLEY	Mojave Water Agency	Scientific Internal	Approve	NA	Request met regulatory criteria.
SAN TIMOTEO	Southwest San Timoteo Groundwater Sustainability Agency	Scientific External	Approve	NA	Request met regulatory criteria.
SAN JACINTO	Eastern Municipal Water District	Scientific External Scientific Internal	Approve Deny Portion (Lake Perris)	345.2(c) - Insufficient scientific evidence to support modification.	Agency did not provide adequate technical studies to demonstrate that area 6 (Lake Perris) does not represent basin material; remaining portions of request were approved.
SAN DIEGO RIVER VALLEY	City of San Diego	Scientific External	Approve	NA	Request met regulatory criteria.
COASTAL PLAIN OF SAN DIEGO	Sweetwater Authority	Scientific External	Deny	345.2(c) - Insufficient scientific evidence to support modification.	Agency did not provide adequate technical studies to demonstrate that the referenced area did not represent basin material.
LOS OSOS VALLEY	San Luis Obispo County	Jurisdictional Subdivision Scientific External	Approve Deny Portion (Northern fringe)	345.2(c) - Insufficient scientific evidence to support modification.	Agency did not provide adequate technical studies to demonstrate that the referenced "Minor Fringe Exclusion Area" did not represent basin; remaining portions of request were approved.
OXNARD MOUND SANTA PAULA	Mound Basin Groundwater Sustainability Agency	Scientific External Jurisdictional Internal	Approve	NA	Request met regulatory criteria.
FILLMORE PIRU SANTA PAULA	United Water Conservation District	Scientific External Scientific Internal Jurisdictional Internal	Approve	NA	Request met regulatory criteria.
WYANDOTTE CREEK NORTH AMERICAN SUTTER SOUTH YUBA NORTH YUBA	Yuba County Water Agency	Scientific External Jurisdictional Internal	Approve	NA	Request met regulatory criteria.
MADERA KINGS	Madera County	Scientific Internal Jurisdictional Internal	Approve	NA	Request met regulatory criteria.

2018 Basin Boundary Modifications (Updated January 14, 2019)

Basin(s): 1-004 SHASTA VALLEY



Requesting Agency: Siskiyou County Flood Control and Water Conservation District

Modification Category: Scientific External

Agency Description: To expand the Shasta Valley Basin to include the regional volcanic aquifer.

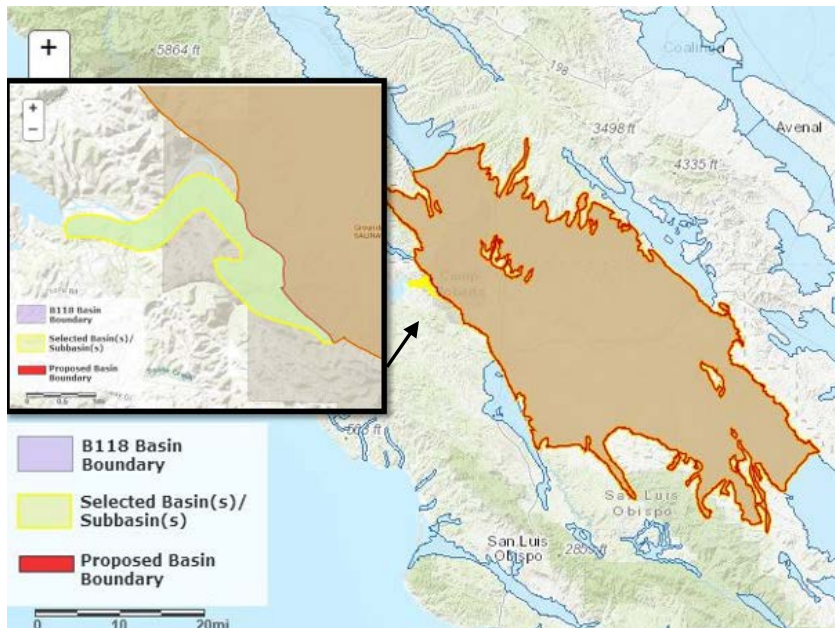
Other Affected Basins: None

Updated DWR Draft Decision: [Approve](#)

Basis for Decision: The basin boundary modification would revise and expand the external Shasta Valley basin to include the volcanic regional aquifer system. The requesting agency provides sufficient information with respect to land and water use, scientific studies, and the best available geologic mapping. Five letters of support and no letters of opposition are associated with this request. The initial submittal by Siskiyou County request was denied due to lack of sufficient scientific information to support including expanded area of volcanic deposits and lacked demonstration that the areas met the regulatory definitions of ‘aquifer’ and ‘basin’. A total of 13 public comments were received on the initial DWR draft decision that supported the agency’s original request. Siskiyou County provided a technical study that included a statistical analysis of well log information and subsurface conditions in the areas desired to be added to the existing basin. The analysis revealed that a significant number (77%) of wells were constructed within sediment-based aquifers, although intermixed with volcanic rock. The additional supporting information satisfactorily meets the regulatory requirements.

2018 Basin Boundary Modifications (Updated January 14, 2019)

Basin(s): 3-004.06 SALINAS VALLEY - PASO ROBLES AREA



Requesting Agency:
Heritage Ranch
Community Services
District

**Modification
Category:** Scientific
External

**Agency
Description:**
Establish the
structurally
controlled geologic
contact and a portion
of the Rinconada
Fault system as the
western Paso Robles
Basin boundary in
the area of the
Nacimiento River.

Other Affected Basins: None

Updated DWR Draft Decision: [Approve](#)

Basis for Decision: The basin boundary modification would revise a minor part of western external boundary of the Paso Robles Area subbasin. The initial request included technical information suggesting a part of the revised boundary that includes a local fault and geologic contacts act as hydrologic barriers. The request also included information on subsurface conditions and land and water use. Two letters of support are associated with this request. The initial submittal by Heritage Ranch lacked adequate technical demonstration to support the scientific external modification request. One public comment was received on the initial DWR draft decision that supported the agency's original request. Heritage Ranch provided a technical study which further explained and supported the primary definition of the Paso Robles subbasin as reliant on the Paso Robles Formation (aquifer). The proposed boundary would occur at the contact of the Paso Robles and Monterey Formations coincident with the Rinconada Fault. The additional supporting information satisfactorily meets the regulatory requirements.

2018 Basin Boundary Modifications (Updated January 14, 2019)

Basin(s): 5-022.14 SAN JOAQUIN VALLEY - KERN COUNTY



Requesting Agency: West Kern Water District

Modification Category: Scientific External

Agency Description: The BBM request proposed to modify portions of the southern and western boundary of the Kern County Groundwater Subbasin (5-22.14).

Other Affected Basins: None

Updated DWR Draft Decision: [Approve with Deny Portion](#)

Basis for Decision: The initial basin boundary modification proposed to revise the western external boundary of the Kern County subbasin to remove portions of older sedimentary rock units, areas of thin alluvium, and included a small portion of external boundary that followed a jurisdictional boundary. The initial scientific information contained deviations from the proposed older and younger alluvial contacts along several portions of the proposed modification. The initial request lacked adequate scientific evidence to demonstrate proposed modification and areas subject to removal did not represent basin or aquifer. One public comment was received on the initial DWR draft decision that supported the agency's original request. West Kern WD provided a technical study to support and clarify the original request to remove four areas; significant oil producing areas (mapped as QP with Anticlines, older alluvial unit (QP), older rock unit, and subdividing a portion of the basin to create a new subbasin (Little Santa Maria Valley). Some of the additional technical information relied on generalized assumptions regarding the hydrogeologic connectivity between the primary aquifers of the basin and the oil producing areas; without a more detailed analysis, the request to remove these areas are not approved. Also, the request to subdivide the basin and create a new subbasin is not supported by the submitted technical information, was not part of the original request, and is not approved. The removal of the older rock unit and the older alluvial unit (with one exception near Little Santa Maria Valley) is supported and meets the regulatory requirements.