

Memorandum

Date: January 5, 2019

To: California Water Commission

From: Department of Water Resources, Sustainable Groundwater Management Office

Subject: 2018 Basin Boundary Modifications – Draft Decisions

The Department of Water Resources (DWR/Department) is seeking to finalize the 2018 Draft Basin Boundary Modification Decisions announced on November 29, 2018. Per the California Water Code, the Department will present the basin boundary modification process and 2018 Draft Decisions to the California Water Commission (Commission) at its January 16, 2019 meeting. DWR values and will consider all Commissioner comments, in addition to comments made by members of the public during the public comment period.

This memorandum is intended to provide a brief overview in advance of the meeting to support the Commission's required "hear and comment" function specifically related to basin boundary modifications (WC 10722.2(e)). The following attachments are included:

- Attachment 1 – Background of Basin Boundary Modifications
- Attachment 2 – Table of 2018 Draft Basin Boundary Modification Decisions
- Attachment 3 – Single Page Summaries of each request

Boundary Modifications to Bulletin 118 Basins

The 2018 Basin Boundary Modification process provides local agencies and Groundwater Sustainability Agencies (GSAs) an opportunity to request modifications to Bulletin 118 defined basin boundaries. Modifications could be requested for either scientific or jurisdictional reasons, both of which are intended to promote sustainable groundwater management. Scientific modifications are based on geologic or hydrologic conditions, while jurisdictional modifications change internal boundaries. The various types of modifications are explained in greater detail in Attachment 1.

Section 12924 of the California Water Code authorizes DWR to investigate and identify the state's groundwater basins, investigate patterns of groundwater extraction and recharge within those basins, and identify basins that are subject to critical conditions of overdraft. Bulletin 118, California's official publication on the occurrence and nature of groundwater statewide, defines basin boundaries, describes the hydrologic characteristics of California's groundwater basins, and provides information on groundwater management and recommendations for the future.

The Sustainable Groundwater Management Act (SGMA) established a process for local agencies to ask DWR to revise the boundaries of existing groundwater basins or subbasins, including establishing new subbasins. The Department developed the Basin

Boundary Emergency Regulations, which were approved by the Commission on October 21, 2015, and went into effect on November 16, 2015.

The current modification period represents the second opportunity to modify basin boundaries since the implementation of the SGMA and the Basin Boundary Emergency Regulations. DWR offered an initial opportunity for local agencies to request modification of the Bulletin 118 basins in 2016. Based on subsequent requests from local agencies, the 2018 modification period was opened.

Summary of the 2018 Basin Boundary Modification Process

Of the 517 groundwater basins and subbasins in California, local agencies submitted 43 requests for basin modifications that affect 59 basins and subbasins.

The 2018 Basin Boundary Modification process was implemented as follows:

Events	Dates
Initial Notification for Boundary Modification Request Opens	July 1, 2017
Request Submission Period and Public Comment Period Opens	January 1, 2018
Submission Period Closes, including 3-month extension	September 28, 2018
Public Comment Period Closes	October 29, 2018
Draft Basin Boundary Modifications Released and Public Comment Period Opens	November 29, 2018
Public Meeting – Webcast available at: https://youtu.be/kFGyjdqTPn0	December 11, 2018
Public Comment Period Closes	January 4, 2019
California Water Commission Meeting	January 16, 2019
Final Basin Boundary Modifications – Anticipated Release	February 2019

Each modification request included significant public outreach and stakeholder engagement opportunities. Several opportunities exist for stakeholder engagement prior to submission of the modification request at the local level. Following submission of the modification request to DWR, a 30-day public input period is initiated for each request. This input is hosted on the DWR SGMA Portal and is publicly available. These comments along with all other public comments were considered carefully during the evaluation of the requests in support of the Draft Decisions presented here.

DWR will present the 2018 Draft Basin Boundary Modification Decisions at the California Water Commission meeting on January 16, 2019 to meet the “hear and comment” function and consider all comments and concerns voiced by the Commission. As an item on the Commission meeting agenda, the public will also have an additional opportunity to comment. All public comments received throughout the process will be reviewed and evaluated before final Basin Boundary Modifications results are announced.

Summary of the 2018 Basin Boundary Modification Decisions

DWR staff reviewed all requests and approved modifications that met the requirements of the Basin Boundary Regulations. In total, DWR approved 33, denied seven and partially approved three modification requests. Denials were based on the criteria identified in

regulations and were specific to the unique information presented for each type of modification request. Some requests were partially approved because some portions of the modification requests were adequately supported by the information provided, while other portions were not.

The following is a summary of DWR’s Draft Decisions. Table 1 provides a summary of the results. Figure 1 on page 5 illustrates the approved 2018 Draft Basin Boundary Modification Decisions.

Table 1 Summary of 2018 Draft Basin Boundary Modification Decisions

Request Type ¹	Approved	Denied	Total
Total Jurisdictional	21	2	23
Internal	15	1	16
Consolidation	5	0	5
Subdivision	1	1	2
Total Scientific	10	5	15
External	7	5	12
Combination	2	0	2
Internal	1	0	1
Total Combination²	5	0	5
Totals	36	7	43

1. Description of modification types are described in Attachment 1.
2. Three requests included approvals of portions of request.

Significance to SGMA

The opportunity for local agencies to modify the Bulletin 118 boundaries of their affiliated groundwater basin(s) helps to realize the central tenet of SGMA - that sustainable groundwater management is best done locally. The locally-requested basin boundary changes must be done in accordance with the Basin Boundary Regulations in support of sustainable groundwater management. This requires coordination with the Department’s existing authority to characterize the physical groundwater basins.

SGMA requires DWR to reassess groundwater basin prioritization any time it updates Bulletin 118 boundaries, which then determines which basins must establish GSAs and develop Groundwater Sustainability Plans (GSPs). All Bulletin 118 basins designated as medium or high priority and critically overdrafted shall be managed under a GSP by January 31, 2020. All other medium and high priority basins must be managed under a GSP by January 31, 2022.

Due to the finalization of the 2016 Basin Boundary Modifications documented in Bulletin 118 Interim Update 2016, DWR was required to reassess the prioritization for all 517 of the state’s groundwater basins, which is currently underway. DWR is performing the current prioritization process in 2 phases:

- Phase 1, released January 4, 2019, presents the Final Priority for 458 basins that are not affected by the 2018 Basin Boundary Modifications;
- Phase 2 prioritization will evaluate the 59 basins affected by the 43 basin boundary modification requests, with finalization slated for late Spring 2019.

The Bulletin 118 Basin Boundaries and Basin Prioritization represent foundational elements necessary for GSA establishment and GSP development. The Department's efforts to finalize these two critical functions will allow local agencies clarity and stability related to their responsibilities under SGMA.

California Water Commission Role

Presenting the 2018 Draft Basin Boundary Modification Decisions to the Commission is an important part of DWR's public review and finalization process. The timing of the Commission's "hear and comment" function is critical as it serves as a final opportunity to consider additional information that could support the definition of basins and implementation of sustainable groundwater management prior to releasing the Final 2018 Basin Boundaries. Previous engagement with the Commission in its "hear and comment" capacity led to the modification of three Draft decisions during the 2016 round of Basin Boundary Modifications.

At the time of this briefing, the Department is reviewing the public comments received from the 35-day public comment period, which closed on January 4, 2019, and hopes to resolve any potential changes prior to the Commission meeting on January 16, 2019.

Next Steps

Upon DWR final approval of the 2018 Draft Basin Boundary Modifications, the following activities will be performed:

- Finalize Basin Boundary Modifications - February 2019.
- Publish Final Bulletin 118 Basin Boundaries on DWR Webpage - February 2019.
- Basin Prioritization (Phase 2) will commence, with finalization expected late Spring 2019.
- Prepare Bulletin 118 Update – release late 2020.

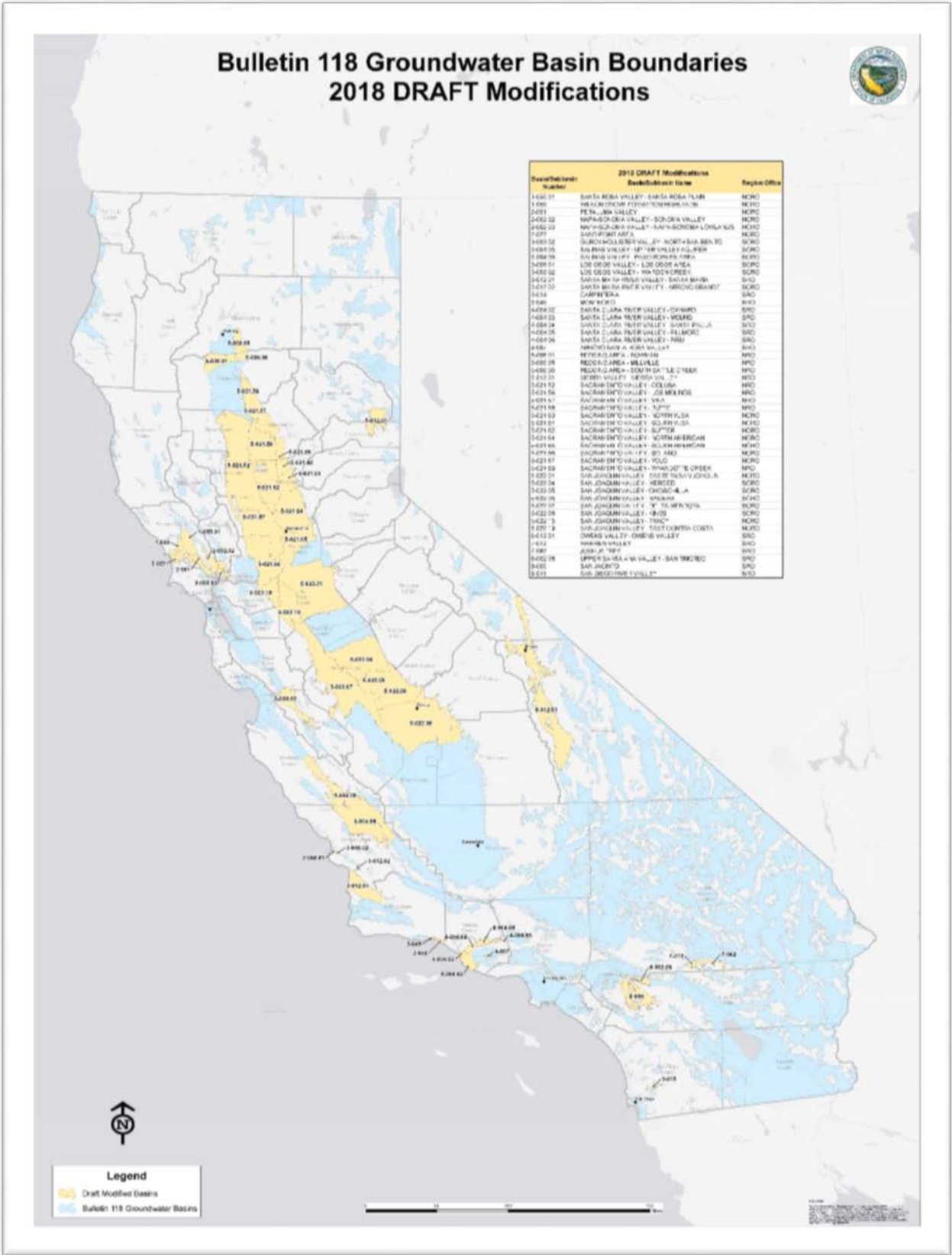


Figure 1 - Approved 2018 Draft Basin Boundary Modification Decisions

Attachment 1
Background of Basin Boundary Modifications

Background of Basin Boundary Modifications

The 2014 Sustainable Groundwater Management Act (SGMA) directed Department of Water Resources (DWR) to prepare Basin Boundary Emergency Regulations (Regulations). The Regulation process provides opportunity for local agencies to request modification of the Bulletin 118 (B-118) basin boundaries. These requests are evaluated in accordance with the Regulation and within the existing responsibilities of DWR to define and characterize these basins in B-118. The following provides a description of the Basin Boundary Modification Request Regulation process.

History of Basin Boundary Modifications

The B-118 is the primary document describing the occurrence and nature of groundwater in California. The California legislature directed DWR, in California Water Code §12924, to investigate these basins based on geologic, hydrologic, and, whenever practical, political boundaries. The following is a brief chronology of the development and evolution of the B-118 basin boundaries:

- B-118 characterized the occurrence and nature of the groundwater basins in a series of documents in both Statewide and Regional Reports. Statewide publications occurred in 1975, 1980, 2003, and 2016. More information on Bulletin 118 can be found at: <https://water.ca.gov/Programs/Groundwater-Management/Bulletin-118>.
- SGMA was enacted in 2014 and called upon *B-118, 2003* as the basin definitions to be utilized for the implementation of SGMA.
- Emergency Basin Boundary Emergency Regulations were drafted by DWR and adopted by CWC in Fall of 2015.
- 2016 Basin Boundary Modification Submission Period began in January 2016 and included 54 total requests to modify basin boundaries.
- B-118 Interim Update published the 2016 basin boundary modifications in December 2016.
- 2018 Basin Boundary Modification Submission Period began in January 2018 and included 43 total requests to modify basin boundaries.

Types of Modification Requests

In 2018, all basin boundary modification requests were made by local agencies. The Regulations provide the methods and criteria used for DWR's evaluation of requests. In general, DWR utilizes the best available scientific information to define the groundwater basins in the state. The requests were based on scientific boundaries, jurisdictional boundaries, or some combination of these to define a condition that would support sustainable groundwater management.

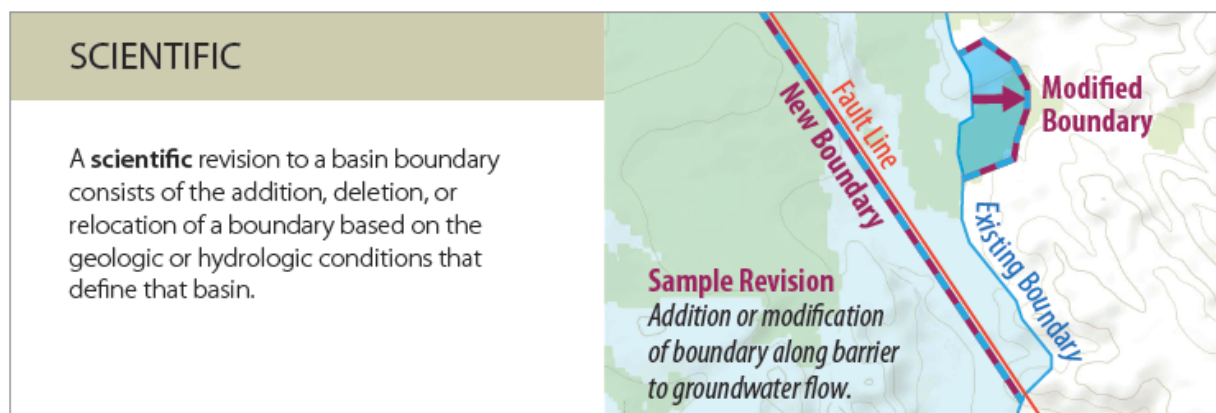


Figure 1 Scientific Modification Types

The scientific modification type (Figure 1) criteria rely heavily on scientific technical studies. This type is further subdivided into external and internal boundary types. External boundaries describe the margins of the basin and the primary contact between hard crystalline rock (fracture flow dominated) and alluvial basin (porous, permeable, radial-flow dominated). Internal boundaries describe the potential for existing geologic structures or bedrock highs to exist and act as an effective barrier to groundwater flow and thus substantiate the scientific basis for subdividing a basin or modifying an internal shared boundary.

The jurisdictional modifications, almost exclusively internal boundaries, are largely reliant on the local support and likelihood of improving the conditions for sustainable management to comply with SGMA. This modification type is further subdivided with specific criteria to meet compliance for each type: internal (Figure 2), consolidation (Figure 3), and subdivision (Figure 4). Jurisdictional internal modifications typically involve moving boundary line to coincide with local agency boundaries to facilitate better coordination. Jurisdictional consolidation involves the consolidation of multiple basins into a single basin resulting in a larger area to be managed, also providing for improved coordination opportunities (i.e. consolidation of the basins within a single county). Jurisdictional subdivision is a process in which a basin is subdivided (one basin becomes multiple basins) resulting in smaller basins based on jurisdictional areas. The Regulations present the most stringent standards for jurisdictional subdivision; requiring $\frac{3}{4}$ of all local agencies and public water systems within the original affected basin(s) to submit a letter of support for the modification.

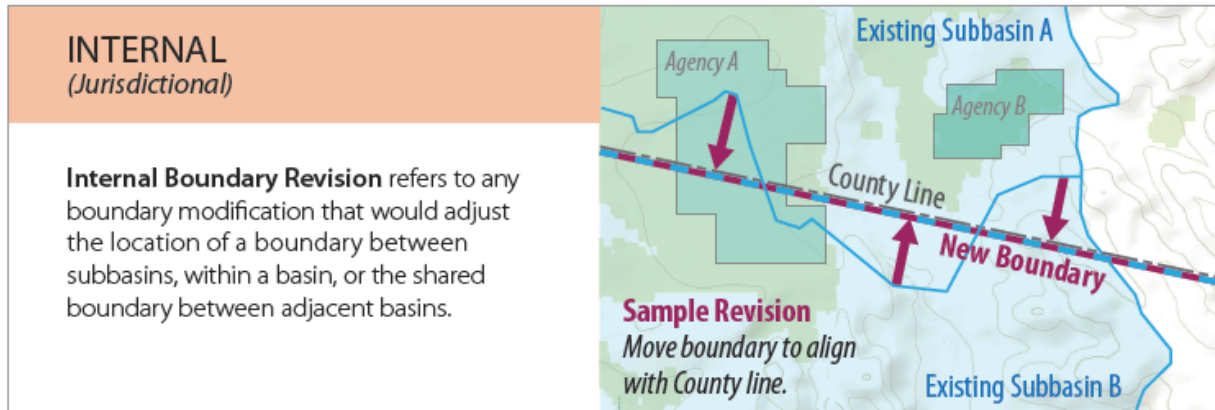


Figure 2 Jurisdictional Internal Modification Type

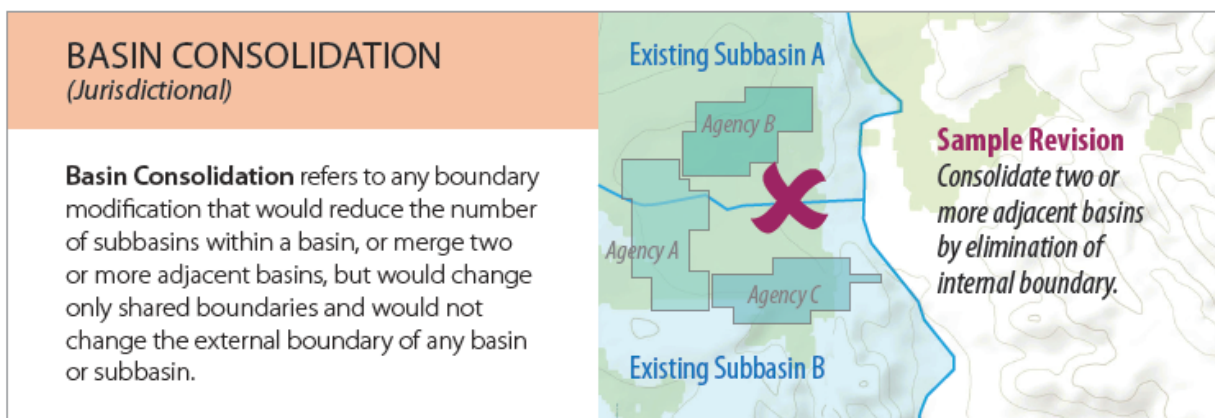


Figure 3 Jurisdictional Consolidation Modification Type

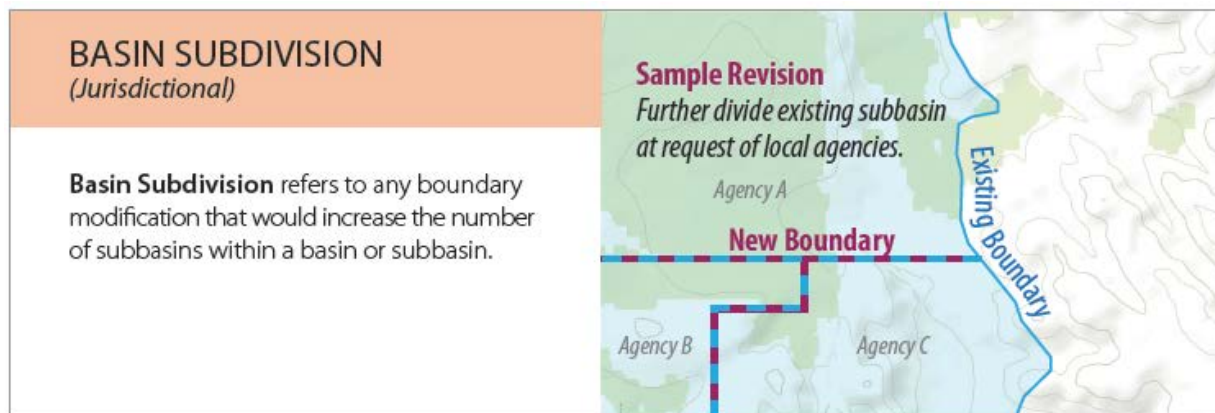


Figure 4 Jurisdictional Subdivision Modification Type

Summary of Regulation

These Regulations are comprised of seven articles to describe the rules and procedures to provide a modification request and for DWR evaluation of the request:

1. **Introductory Provisions:** Provides the authority and intent of the subchapter.
2. **Definitions:** Provides definitions to key terms used in the regulations.
3. **Boundary Modification Categories:** Provides a description for characterizing the type of modification being requested.

4. **Procedures for Modification Request and Public Input:** Describes procedural requirements related to boundary modification requests and public input to those requests.
5. **Supporting Information:** Description of the required information to support the proposed basin modification.
6. **Methodology and Criteria for Evaluation:** Description of the criteria by which information provided in Article 5 will be evaluated.
7. **Adoption of Boundary Modification:** Procedure for the adoption of boundary modifications by DWR.

These Regulatory articles can be characterized in 3 primary components; Local Information, Local Agency Input, and Technical Information. Figure 5 identifies these components of the Regulation for each modification type (described above), opportunities for stakeholder input (blue shading), and the engagement with the California Water Commission. The Regulation provides for a local process to support modification requests and several opportunities for stakeholders to provide input to the process.

Summary of Review Process

Based on the criteria generally described above and provided in detail in the Regulations, DWR developed a comprehensive review process for evaluating the submitted requests. All Local Agency Requests were required to be submitted through the Basin Boundary Modification Request System (<https://sgma.water.ca.gov/basinmod/>), which is publicly accessible. Local agencies were guided through the information submittal process which paralleled the structure of the Regulations to provide the required information to support their request.

Project Staff reviewed and evaluated each of the requests pursuant to the Basin Boundary Emergency Regulations. Technical reviews were conducted by at least four Project Staff. As needed, Staff communicated with requesting agencies for clarifications and/or additional information. Staff considered all public comments received for each request and evaluated whether each request had the effect of promoting sustainable groundwater management.

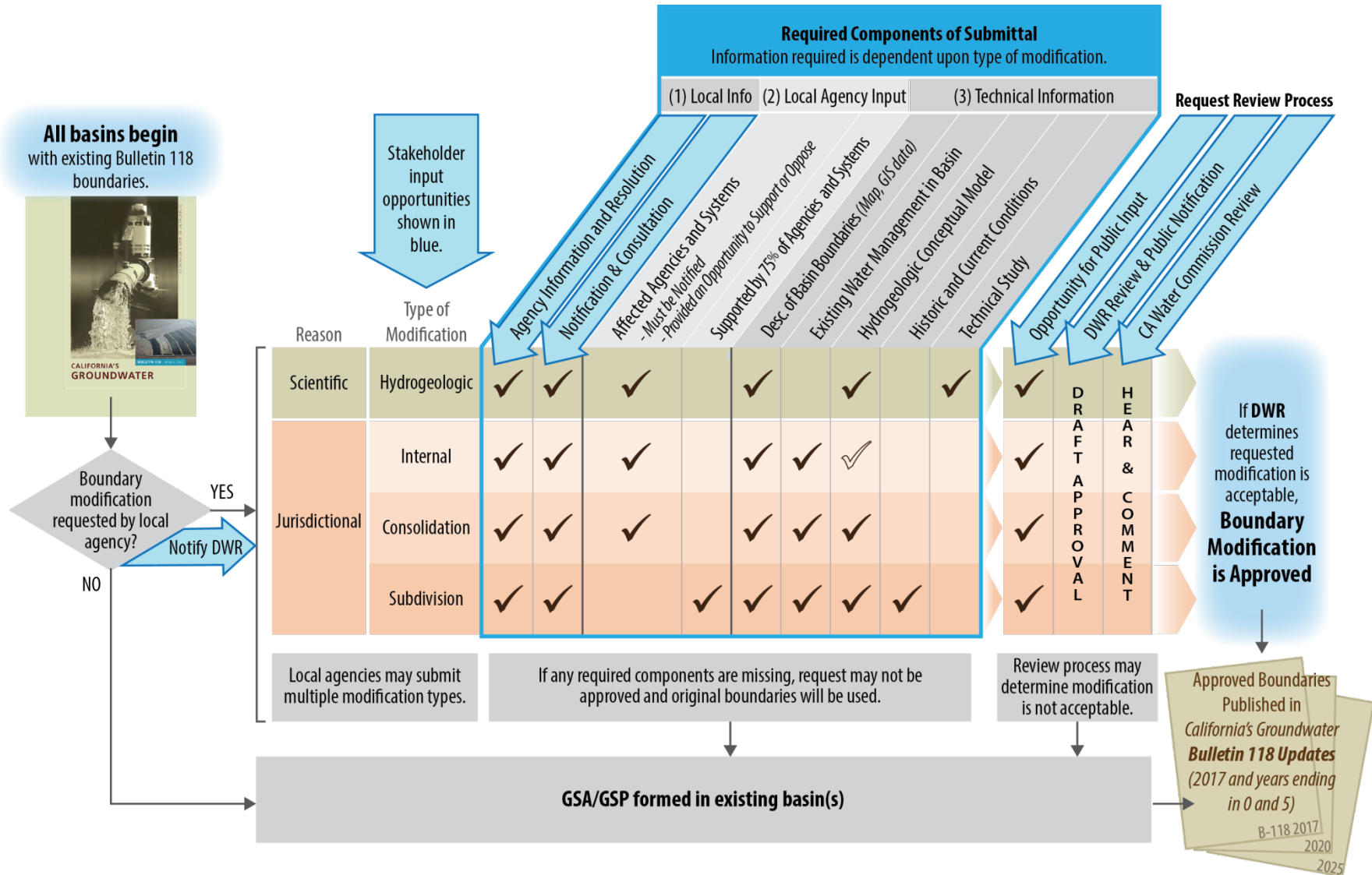


Figure 5 Summary of Regulatory Requirements and Stakeholder Input Opportunities

Attachment 2

Table of 2018 Draft Basin Boundary Modification Decisions

**2018 Basin Boundary Modifications - Draft Decisions
November 29, 2018**

Basin(s)/Subbasin(s)	Requesting Agency	Modification Type	Draft Decision	Basis for Denial	Notes
SANTA ROSA PLAIN WILSON GROVE FORMATION HIGHLANDS	City of Sebastopol	Jurisdictional Internal	Approve	NA	Request met regulatory criteria.
WILSON GROVE FORMATION HIGHLANDS PETALUMA VALLEY	City of Petaluma	Jurisdictional Internal	Approve	NA	Request met regulatory criteria.
WILSON GROVE FORMATION HIGHLANDS SAND POINT AREA	Marin County	Jurisdictional Internal	Approve	NA	Request met regulatory criteria.
SONOMA VALLEY NAPA-SONOMA LOWLANDS	Sonoma Valley Groundwater Sustainability Agency	Jurisdictional Internal	Approve	NA	Request met regulatory criteria.
BOLSA AREA HOLLISTER AREA SAN JUAN BAUTISTA AREA TRES PINOS VALLEY	San Benito County Water District	Jurisdictional Consolidation	Approve	NA	Request met regulatory criteria.
UPPER VALLEY AQUIFER PASO ROBLES AREA	Salinas Valley Basin Groundwater Sustainability Agency	Jurisdictional Internal	Approve	NA	Request met regulatory criteria.
CARPINTERIA MONTECITO	Montecito Water District	Jurisdictional Internal	Approve	NA	Request met regulatory criteria.
BOWMAN ROSEWOOD	Tehama County Flood Control and Water Conservation District	Jurisdictional Consolidation	Approve	NA	Request met regulatory criteria.
MILLVILLE SOUTH BATTLE CREEK	Tehama County Flood Control and Water Conservation District	Jurisdictional Consolidation	Approve	NA	Request met regulatory criteria.
TRACY	Brentwood City Of	Jurisdictional Subdivision	Approve	NA	Request met regulatory criteria.
COLUSA WEST BUTTE	Colusa Groundwater Authority	Jurisdictional Internal	Approve	NA	Request met regulatory criteria.
LOS MOLINOS VINA DYE CREEK	Tehama County Flood Control and Water Conservation District	Jurisdictional Consolidation	Approve	NA	Request met regulatory criteria.
WEST BUTTE EAST BUTTE	Reclamation District No. 1004	Jurisdictional Internal	Approve	NA	Request met regulatory criteria.
WEST BUTTE EAST BUTTE	Butte County Department of Water and Resource Conservation	Jurisdictional Internal Jurisdictional Consolidation	Approve	NA	Request met regulatory criteria.
EAST BUTTE WYANDOTTE CREEK	Butte County Department of Water and Resource Conservation	Jurisdictional Internal	Approve	NA	Request met regulatory criteria.
SUTTER NORTH AMERICAN EAST BUTTE	Sutter County	Jurisdictional Internal	Approve	NA	Request met regulatory criteria.
SOUTH AMERICAN EASTERN SAN JOAQUIN SOLANO	Northern Delta Groundwater Sustainability Agency	Jurisdictional Subdivision	Deny	345.2(d) - Failure to provide all required information.	Agency did not provide the required 3/4 support of local agencies and public water systems in affected basins.
SOUTH AMERICAN COSUMNES	Sloughhouse Resource Conservation District	Jurisdictional Internal	Deny	345.2(a) - May limit opportunity or likelihood of sustainable groundwater management.	Agency did not demonstrate proposed modification would result in improved groundwater management. Opposition to proposal by Sacramento Central Groundwater Authority and City of
SOLANO YOLO	Yolo Subbasin Groundwater Agency	Jurisdictional Internal	Approve	NA	Request met regulatory criteria.
SOLANO TRACY	Sacramento County Water Resources	Jurisdictional Internal	Approve	NA	Request met regulatory criteria.
EASTERN SAN JOAQUIN TRACY	Lathrop City Of	Jurisdictional Internal	Approve	NA	Request met regulatory criteria.
CHOWCHILLA	County of Madera	Jurisdictional Internal	Approve	NA	Request met regulatory criteria.
CHOWCHILLA DELTA-MENDOTA	San Joaquin River Exchange Contractors Water Authority	Jurisdictional Internal	Approve	NA	Request met regulatory criteria.
SHASTA VALLEY	Siskiyou County Flood Control and Water Conservation District	Scientific External	Deny	345.2(c) - Insufficient scientific evidence to support modification.	Agency did not provide adequate technical studies to demonstrate expanded area represents basin per regulatory definition of "basin" and "aquifer".
PASO ROBLES AREA	Heritage Ranch Community Services District	Scientific External	Deny	345.2(c) - Insufficient scientific evidence to support modification.	Agency did not provide adequate technical studies to demonstrate the referenced fault and geologic contact significantly impede groundwater flow.
SANTA MARIA	Santa Barbara County Water Agency	Scientific External	Deny	345.2(c) - Insufficient scientific evidence to support modification.	Agency did not provide adequate technical studies to support external boundaries match adjudication boundaries and did not consistently follow geologic features.
SANTA MARIA	Santa Maria Basin Fringe Areas - County of San Luis Obispo Groundwater Sustainability Agency	Scientific External Scientific Internal	Approve Deny Portion	345.2(c) - Insufficient scientific evidence to support modification.	Agency did not provide adequate technical studies to demonstrate the referenced fault and geologic contact significantly impede groundwater flow for the Ziegler Canyon area; remaining portions of request were approved.
CARPINTERIA	Carpinteria Valley Water District	Scientific External	Approve	NA	Request met regulatory criteria.
ARROYO SANTA ROSA VALLEY	Arroyo Santa Rosa Basin Groundwater Sustainability Agency	Scientific External	Approve	NA	Request met regulatory criteria.
SIERRA VALLEY	Plumas County	Scientific External	Approve	NA	Request met regulatory criteria.

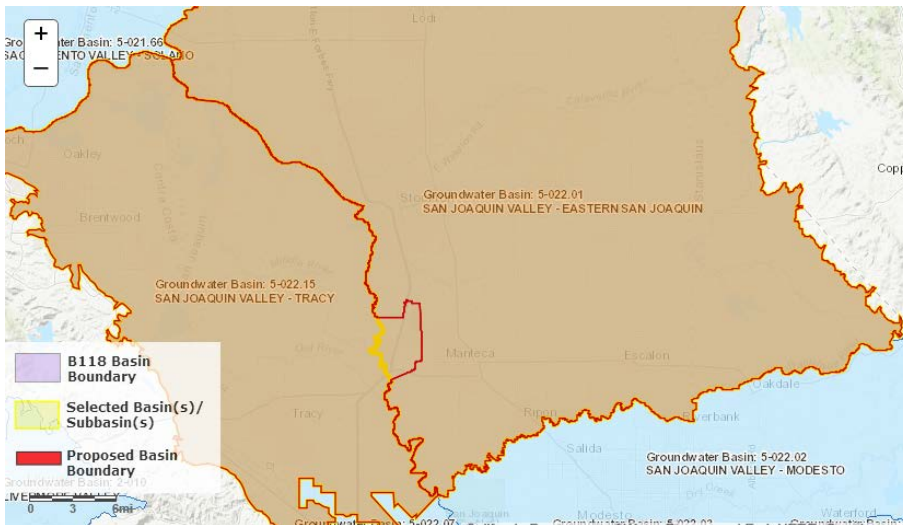
**2018 Basin Boundary Modifications - Draft Decisions
November 29, 2018**

Basin(s)/Subbasin(s)	Requesting Agency	Modification Type	Draft Decision	Basis for Denial	Notes
KINGS	North Kings Groundwater Sustainability Agency	Scientific External	Approve	NA	Request met regulatory criteria.
KERN COUNTY	West Kern Water District	Scientific External	Deny	345.2(c) - Insufficient scientific evidence to support modification.	Agency did not provide adequate technical studies to demonstrate the referenced alluvial units do not represent basin or aquifer. Further, the proposed boundary did not consistently follow scientific external boundaries of the basin.
OWENS VALLEY	Starlite Community Services District	Scientific External	Approve	NA	Request met regulatory criteria.
WARREN VALLEY	Mojave Water Agency	Scientific Internal	Approve	NA	Request met regulatory criteria.
SAN TIMOTEO	Southwest San Timoteo Groundwater Sustainability Agency	Scientific External	Approve	NA	Request met regulatory criteria.
SAN JACINTO	Eastern Municipal Water District	Scientific External Scientific Internal	Approve Deny Portion	345.2(c) - Insufficient scientific evidence to support modification.	Agency did not provide adequate technical studies to demonstrate that area 6 (Lake Perris) does not represent basin material; remaining portions of request were approved.
SAN DIEGO RIVER VALLEY	City of San Diego	Scientific External	Approve	NA	Request met regulatory criteria.
COASTAL PLAIN OF SAN DIEGO	Sweetwater Authority	Scientific External	Deny	345.2(c) - Insufficient scientific evidence to support modification.	Agency did not provide adequate technical studies to demonstrate that the referenced area did not represent basin material.
LOS OSOS VALLEY	San Luis Obispo County	Jurisdictional Subdivision Scientific External	Approve Deny Portion	345.2(c) - Insufficient scientific evidence to support modification.	Agency did not provide adequate technical studies to demonstrate that the referenced "Minor Fringe Exclusion Area" did not represent basin; remaining portions of request were approved.
OXNARD MOUND SANTA PAULA	Mound Basin Groundwater Sustainability Agency	Scientific External Jurisdictional Internal	Approve	NA	Request met regulatory criteria.
FILLMORE PIRU SANTA PAULA	United Water Conservation District	Scientific External Scientific Internal Jurisdictional Internal	Approve	NA	Request met regulatory criteria.
WYANDOTTE CREEK NORTH AMERICAN SUTTER SOUTH YUBA NORTH YUBA	Yuba County Water Agency	Scientific External Jurisdictional Internal	Approve	NA	Request met regulatory criteria.
MADERA KINGS	Madera County	Scientific Internal Jurisdictional Internal	Approve	NA	Request met regulatory criteria.

Attachment 3
Single Page Summary of each request

2018 Draft Basin Boundary Modification Decision

Basin(s): 5-022.01 SAN JOAQUIN VALLEY - EASTERN SAN JOAQUIN; 5-022.15 SAN JOAQUIN VALLEY - TRACY



Requesting Agency: Lathrop City Of

Modification Category: Jurisdictional Internal

Agency Description: Jurisdictional request to align the Eastern San Joaquin and Tracy Subbasins with the City of Lathrop's city limit.

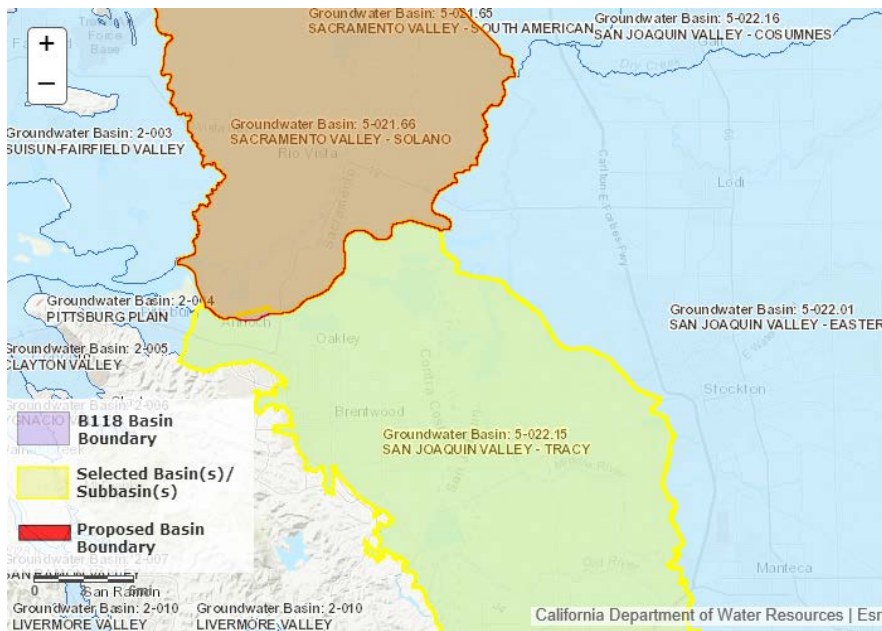
Other Affected Basins: None

DWR Draft Decision: Approve

Basis for Decision: This basin boundary modification revises the Eastern San Joaquin and Tracy subbasin boundaries to align with the City of Lathrop's city limits. The modification places the City of Lathrop entirely within the Tracy subbasin. Four letters of support and one letter of opposition are associated with this request. The modification request meets regulatory requirements.

2018 Draft Basin Boundary Modification Decision

Basin(s): 5-021.66 SACRAMENTO VALLEY – SOLANO; 5-022.15 SAN JOAQUIN VALLEY - TRACY



Requesting Agency:
Sacramento County Water Resources

Modification Category:
Jurisdictional Internal

Agency Description:
Modification to shift <600 acres of water and land from the Tracy subbasin to the

Solano subbasin.

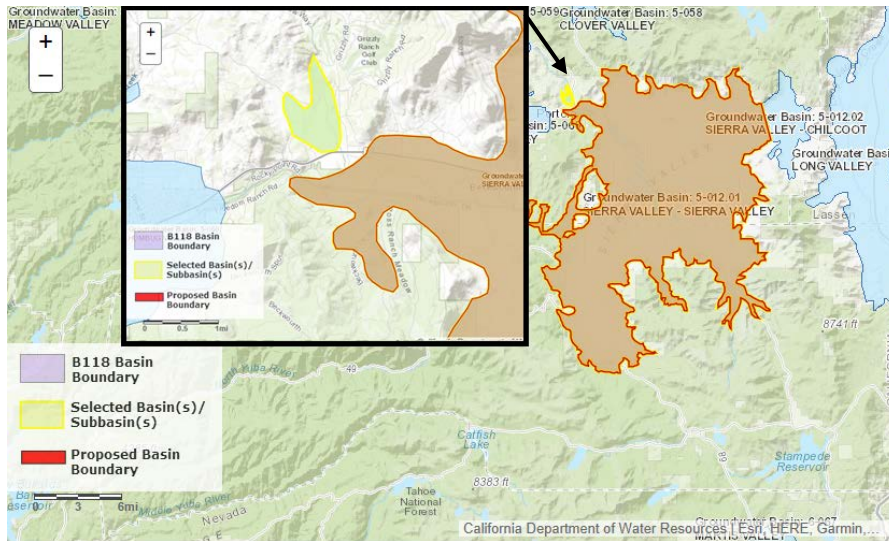
Other Affected Basins: None

DWR Draft Decision: Approve

Basis for Decision: This basin boundary modification revises the existing boundary defined by waterway to the shared county line with Contra Costa and Sacramento. The modification shifts an approximately 600-acre area in the existing Tracy subbasin to the Solano subbasin. Seven letters of support are associated with this request. This request meets regulatory requirements.

2018 Draft Basin Boundary Modification Decision

Basin(s): 5-012.01 SIERRA VALLEY – SIERRA VALLEY



Requesting Agency: Plumas County

Modification Category: Scientific External

Agency Description: Plumas County, as one of the GSA's for Sierra Valley Basin, requests a scientific modification to the

external basin boundary.

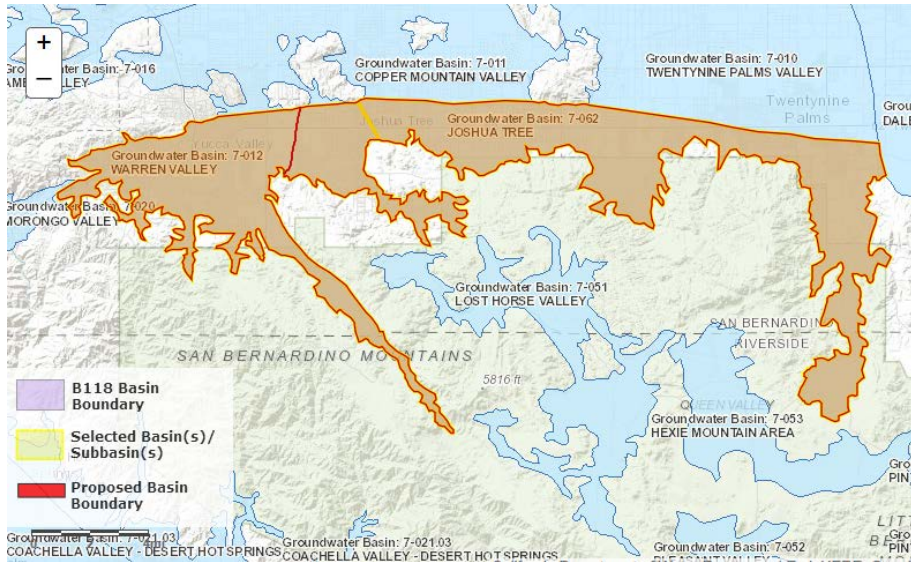
Other Affected Basins: None

DWR Draft Decision: Approve

Basis for Decision: The basin boundary modification removes a small mapped alluvial area from the delineation of the Sierra Valley basin. Geologic maps, well completion reports, and technical studies submitted by the requesting agency indicate that the area is not an alluvial basin, nor is it hydrologically connected to the Sierra Valley Basin. The request meets regulatory requirements and provides sufficient scientific rationale to support the modification.

2018 Draft Basin Boundary Modification Decision

Basin(s): 7-012 WARREN VALLEY; 7-062 JOSHUA TREE



Requesting Agency: Mojave Water Agency

Modification Category: Scientific Internal

Agency Description: Bring the eastern basin boundary into alignment with the written description of the Warren Valley Basin provided in Bulletin 118 (2003).

Other Affected Basins: None

DWR Draft Decision: Approve

Basis for Decision: The basin boundary modification revises the basin boundary into alignment with the Warren Valley basin description published in Bulletin-118 (Update 2003). The modification aligns the western boundary of the Joshua Tree basin with the geographic location of the Yucca barrier, a feature that affects groundwater flow. The requesting agency presented sufficient scientific rationale to justify modifying the boundary, including technical studies and Bulletin-118 basin descriptions. Two letters of support are associated with this request. The request meets regulatory requirements.

2018 Draft Basin Boundary Modification Decision

Basin(s): 3-018 CARPINTERIA; 3-049 MONTECITO



Requesting Agency:
Montecito Water District

Modification Category:
Jurisdictional Internal

Agency Description:
Jurisdictional modification to conform to service area boundary.

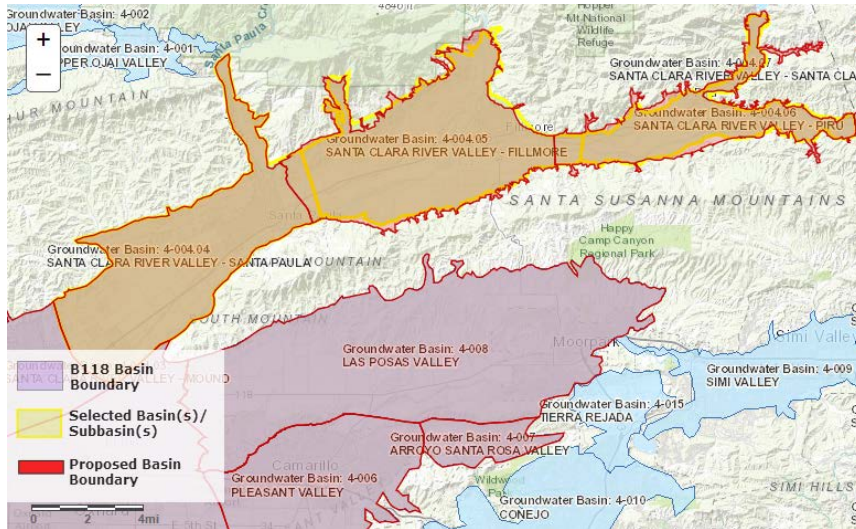
Other Affected Basins: None

DWR Draft Decision: Approve

Basis for Decision: The basin boundary modification revises the Carpinteria and Montecito shared basin boundary to align with the Montecito Water District and Carpinteria Valley Water District boundaries. Montecito Water District and Carpinteria Valley Water District have executed a Memorandum of Understanding (MOU) regarding cooperation with groundwater management. Two letters of support are associated with this request. The request meets regulatory requirements.

2018 Draft Basin Boundary Modification Decision

Basin(s): 4-004.05 SANTA CLARA RIVER VALLEY - FILLMORE; 4-004.06 SANTA CLARA RIVER VALLEY – PIRU; 4-004.04 SANTA CLARA RIVER VALLEY – SANTA PAULA



Requesting Agency:
United Water
Conservation District

Modification Category: Scientific
External, Scientific
Internal, Jurisdictional
Internal

Agency Description:
Santa Paula/Fillmore
subbasins:
Jurisdictional Internal.
Fillmore/Piru
subbasins: Scientific
Internal. North/south

Fillmore/Piru subbasins: Scientific External.

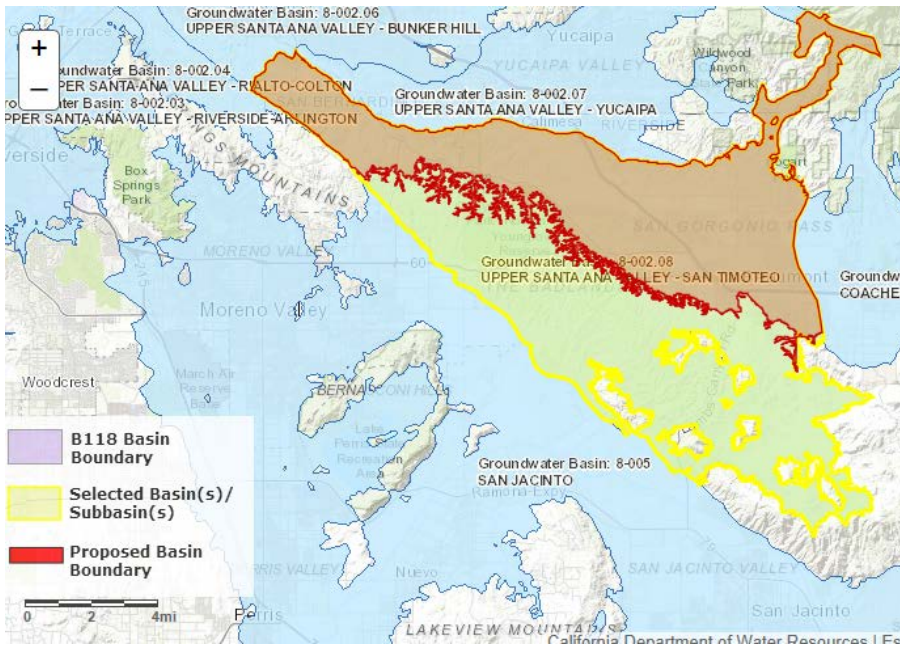
Other Affected Basins: None

DWR Draft Decision: Approve

Basis for Decision: The basin boundary modification contains three components. The first part is a jurisdictional boundary modification to the Santa Paula and Fillmore subbasins that shifts the existing shared boundary to align with the eastern extent of the adjudicated Santa Paula subbasin - this results in non-adjudicated areas being added to the Fillmore subbasin. The second part is a scientific boundary modification to the shared boundary of the Piru and Fillmore subbasins. Geologic maps and groundwater elevation data support the shared boundary location at a steep groundwater gradient inflection point. The third part of the request is a scientific modification to the external boundaries of the Fillmore and Piru subbasins. The supporting information follows geologic contacts on a qualified geologic map to delineate the proposed boundary revisions. Each part of the request meets regulatory requirements and supplies sufficient scientific rationale where needed. Four letters of support are associated with this request.

2018 Draft Basin Boundary Modification Decision

Basin(s): 8-002.08 UPPER SANTA ANA VALLEY – SAN TIMOTEO



Requesting Agency:
Southwest San Timoteo Groundwater Sustainability Agency

Modification Category:
Scientific External

Agency Description:
Basin boundary modification based on scientific justification to better represent

aquifer conditions.

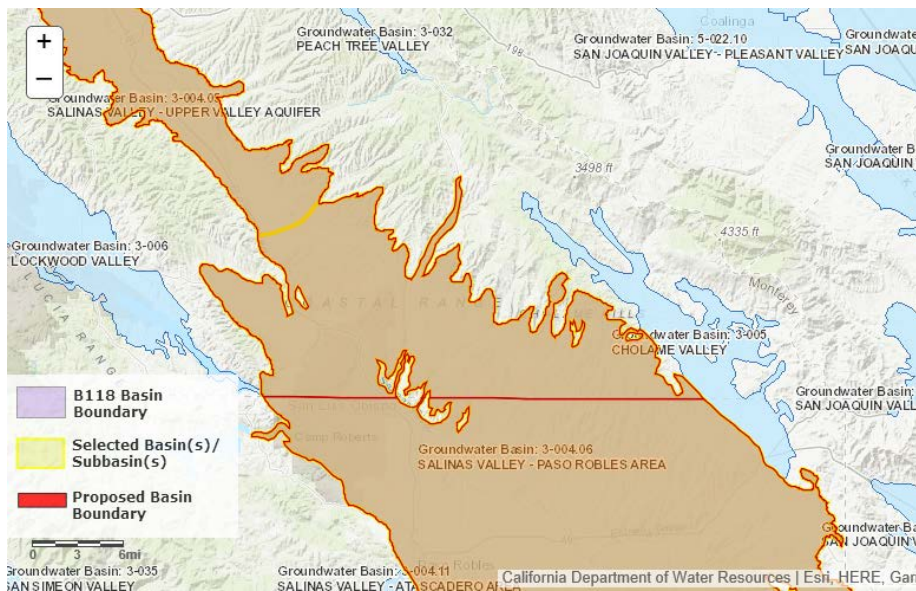
Other Affected Basins: None

DWR Draft Decision: Approve

Basis for Decision: The basin boundary modification removes areas of low permeability, well-consolidated bedrock from the basin. The revised basin boundary follows geologic contacts of alluvium and bedrock using a qualified geologic map. The request includes sufficient supporting information for delineating the bedrock and alluvial areas and meets regulatory requirements.

2018 Draft Basin Boundary Modification Decision

Basin(s): 3-004.05 SALINAS VALLEY – UPPER VALLEY AQUIFER; 3-004.06 SALINAS VALLEY – PASO ROBLES AREA



Requesting Agency: Salinas Valley Basin Groundwater Sustainability Agency

Modification Category: Jurisdictional Internal

Agency Description: A jurisdictional modification of the Upper Valley Aquifer and Salinas Valley Paso Robles Area

subbasins.

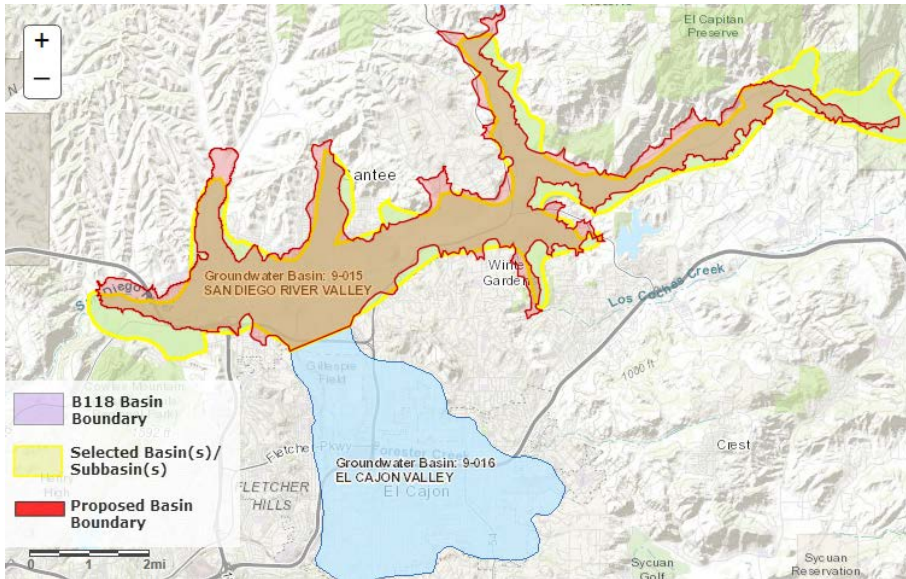
Other Affected Basins: None

DWR Draft Decision: Approve

Basis for Decision: The basin boundary modification extends the existing shared boundary of the Upper Valley Aquifer and Paso Robles Area subbasins to coincide with the Monterey and San Luis Obispo county line. The request would place the Monterey County portions of the Paso Robles Area subbasin entirely within Monterey County. The resulting boundary between these subbasins would be consistent with existing County and Groundwater Sustainability Agency jurisdictions. Several letters of support are included in this request. The request meets regulatory requirements.

2018 Draft Basin Boundary Modification Decision

Basin(s): 9-015 SAN DIEGO RIVER VALLEY



Requesting Agency: City of San Diego

Modification Category: Scientific External

Agency Description: Scientific-based modification to more accurately depict the extent of alluvium in the Basin.

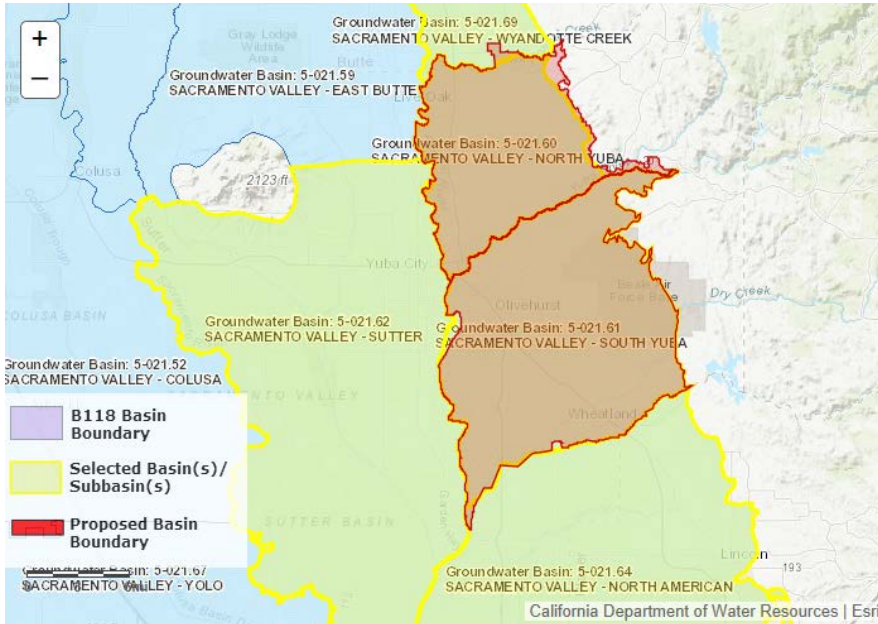
Other Affected Basins: None

DWR Draft Decision: Approve

Basis for Decision: The basin boundary modification follows geologic contacts on a 1:100,000 scale qualified map, which is a more detailed mapping scale than the 1:250,000 scale maps used in 2016. Colluvium deposits are excluded from the upper reaches of the proposed basin. These deposits are thin, dry layers above non-permeable, consolidated deposits. Five letters of support are associated with this request. The request supplies sufficient scientific rationale for the proposed boundary and meets regulatory requirements.

2018 Draft Basin Boundary Modification Decision

Basin(s): 5-021.69 SACRAMENTO VALLEY – WYANDOTTE CREEK; 5-021.64 SACRAMENTO VALLEY – NORTH AMERICAN; 5-021.62 SACRAMENTO VALLEY – SUTTER; 5-021.61 SACRAMENTO VALLEY – SOUTH YUBA; 5-021.60 SACRAMENTO VALLEY – NORTH YUBA



Requesting Agency: Yuba County Water Agency

Modification Category: Scientific External, Jurisdictional Internal

Agency Description: Modifications to the North and South Yuba Subbasins.

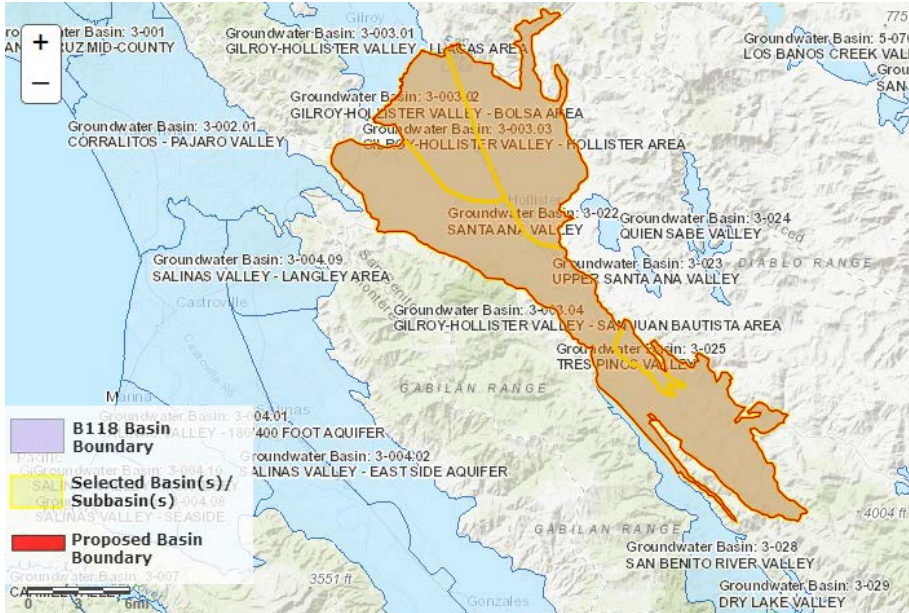
Other Affected Basins: None

DWR Draft Decision: Approve

Basis for Decision: The first portion of the basin boundary modification is an external scientific revision to the eastern boundary of the North Yuba subbasin. The boundary utilizes a qualified map and follows geologic contacts of alluvial deposits and consolidated rocks of the Sierra Nevada. The second portion of the modification consists of two internal jurisdictional revisions. This first modifies the boundary between the South Yuba, North American, and Sutter subbasins to align with the Yuba County line and include Dry Creek Mutual Water Company's jurisdictional boundary within the South Yuba subbasin. The second modifies the boundary between the North Yuba and Wyandotte Creek subbasins to follow and include the jurisdictional boundary of the Ramirez Water District within the North Yuba subbasin. Two letters of support are associated with this request. Each part of the request meets regulatory requirements and supplies sufficient scientific rationale where required.

2018 Draft Basin Boundary Modification Decision

Basin(s): 3-003-.02 GILROY-HOLLISTER VALLEY – BOLSA AREA; 3-003-.03 GILROY-HOLLISTER VALLEY – HOLLISTER AREA; 3-003-.04 GILROY-HOLLISTER VALLEY – SAN JUAN BAUTISTA AREA; 3-025 TRES PINOS VALLEY



Requesting Agency: San Benito County Water District

Modification Category: Jurisdictional Consolidation

Agency Description: Consolidation of San Juan Bautista, Bolsa, Hollister, and Tres Pinos Valley basins

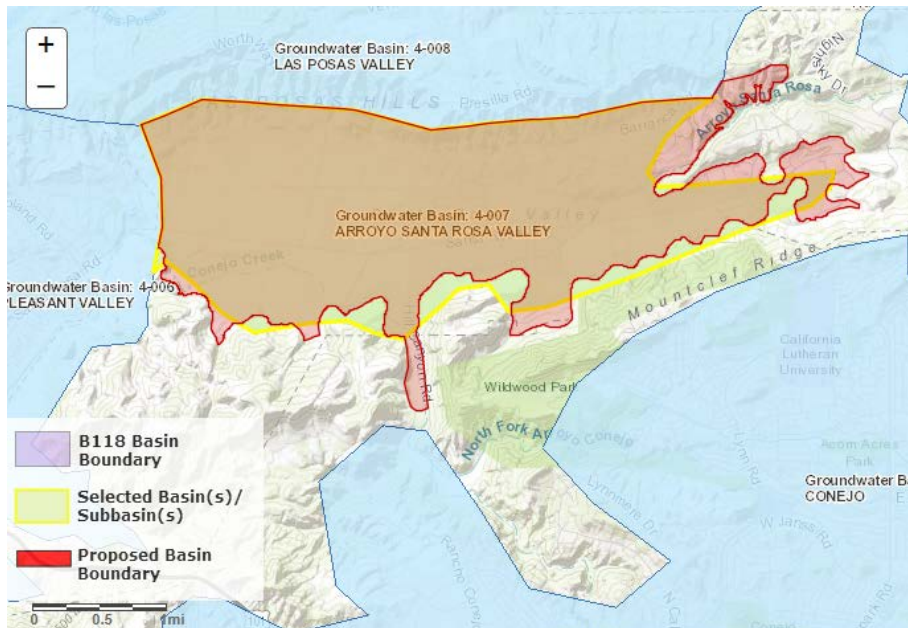
Other Affected Basins: None

DWR Draft Decision: Approve

Basis for Decision: The basin boundary modification would consolidate the Bolsa Area, Hollister Area, and San Juan Bautista Area subbasins of Gilroy-Hollister Valley basin, and the Tres Pinos Valley basin, into a single subbasin. This new subbasin would be named the North San Benito Groundwater subbasin. No revisions are proposed to the resulting external boundary of the subbasin. San Benito County Water District is the exclusive Groundwater Sustainability Agency for all four basins. Nine letters of support are associated with this request. The request meets regulatory requirements.

2018 Draft Basin Boundary Modification Decision

Basin(s): 4-007 ARROYO SANTA ROSA VALLEY



Requesting Agency: Arroyo Santa Rosa Basin Groundwater Sustainability Agency

Modification Category: Scientific External

Agency Description: The request would include the extent of alluvium and water-bearing formations in the

basin.

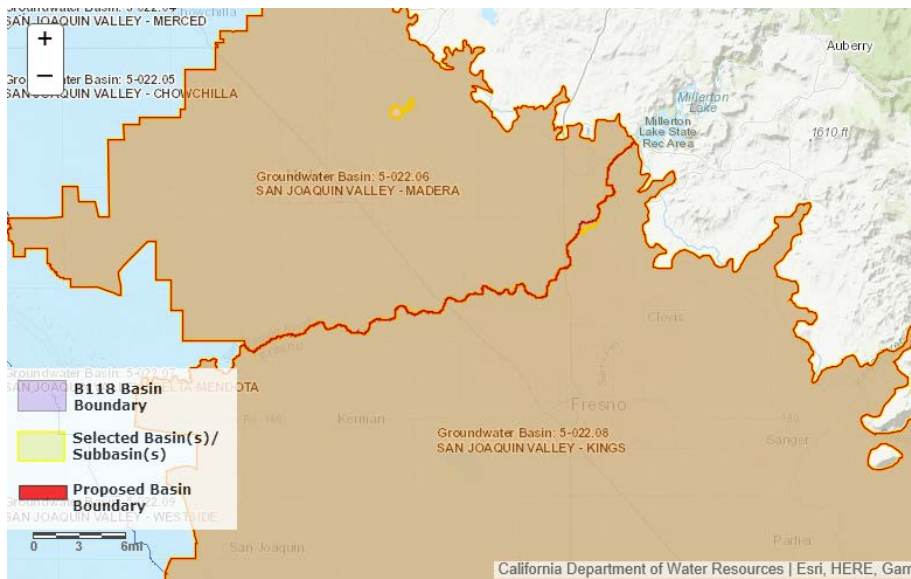
Other Affected Basins: None

DWR Draft Decision: Approve

Basis for Decision: The basin boundary modification follows geologic contacts on a qualified map. The modification increases the boundary's accuracy by delineating the extent of alluvium on a more detailed scale than previously mapped, and it more accurately incorporates water-bearing formations into the Arroyo Santa Rosa Valley basin. The requesting agency supplies sufficient information to support the scientific rationale for the modification. The request meets regulatory requirements.

2018 Draft Basin Boundary Modification Decision

Basin(s): 5-022.06 SAN JOAQUIN VALLEY – MADERA; 5-022.08 SAN JOAQUIN VALLEY - KINGS



Requesting Agency: Madera County

Modification Category: Scientific Internal, Jurisdictional Internal

Agency Description: Jurisdictional modification to align the Madera basin with the County line. Scientific request to include Madera Lake in the

Madera subbasin.

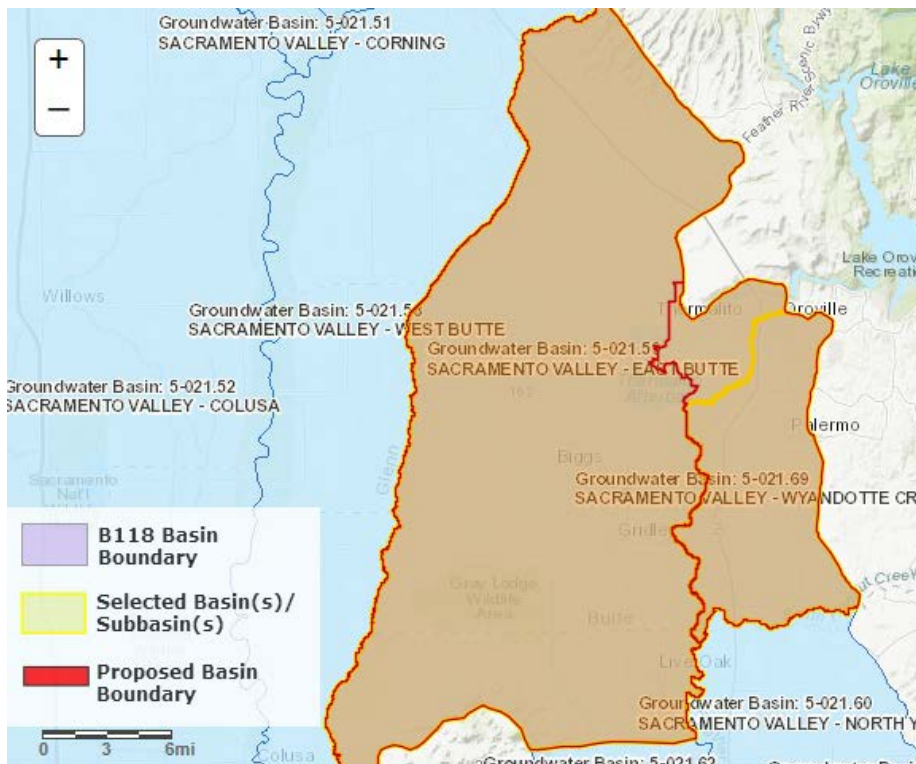
Other Affected Basins: None

DWR Draft Decision: Approve

Basis for Decision: The basin boundary modification revises the shared boundary of the Madera and Kings subbasins to follow the Madera/Fresno County line. The modification also includes Madera Lake to the Madera subbasin. The surrounding land around the lake is alluvium and does not provide a hydrologic barrier. The requesting agency supplies sufficient information to support the modification. Several letters of support are associated with this request. The request meets regulatory requirements.

2018 Draft Basin Boundary Modification Decision

Basin(s): 5-021.59 SACRAMENTO VALLEY – EAST BUTTE; 5-021.69 SACRAMENTO VALLEY – WYANDOTTE CREEK



Requesting Agency: Butte County Department of Water and Resource Conservation

Modification Category: Jurisdictional Internal

Agency Description: Adjust the boundaries of the Wyandotte Creek subbasin to include the City of Oroville and surrounding

urbanized areas.

Other Affected Basins: None

DWR Draft Decision: Approve

Basis for Decision: The basin boundary modification revises the boundary between the Wyandotte Creek subbasin and the East Butte subbasin so that the City of Oroville and the Thermalito Water and Sewer District are entirely within the Wyandotte Creek subbasin. The proposed boundary generally follows the Feather River and eastern extent of the Thermalito Afterbay. Six letters of support are associated with this request. The request meets regulatory requirements.

2018 Draft Basin Boundary Modification Decision

Basin(s): 5-021.58 SACRAMENTO VALLEY – WEST BUTTE; 5-021.59 SACRAMENTO VALLEY – EAST BUTTE



Requesting Agency:
Reclamation District No. 1004

Modification Category:
Jurisdictional Internal

Agency Description:
Move 730 acres of RD1004 land from East Butte to the West Butte Subbasin.

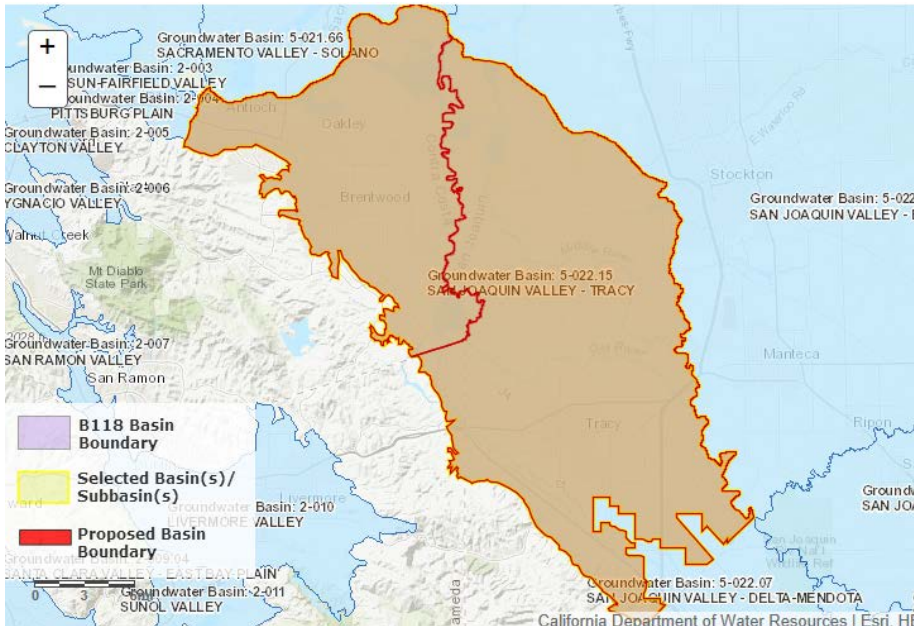
Other Affected Basins: None

DWR Draft Decision: Approve

Basis for Decision: The basin boundary modification revises the southern shared boundary of West Butte and East Butte subbasins to align with Reclamation District 1004's jurisdictional boundaries. The revision would put Reclamation District 1004 entirely within the West Butte subbasin. This modification correlates with another request submitted by Butte County Department of Water and Resource Conservation. The request meets regulatory requirements.

2018 Draft Basin Boundary Modification Decision

Basin(s): 5-022.15 SAN JOAQUIN VALLEY - TRACY



Requesting Agency:
Brentwood City Of

Modification Category:
Jurisdictional
Subdivision

Agency Description:
Subdivide Tracy
Subbasin at the
Contra Costa
County line.

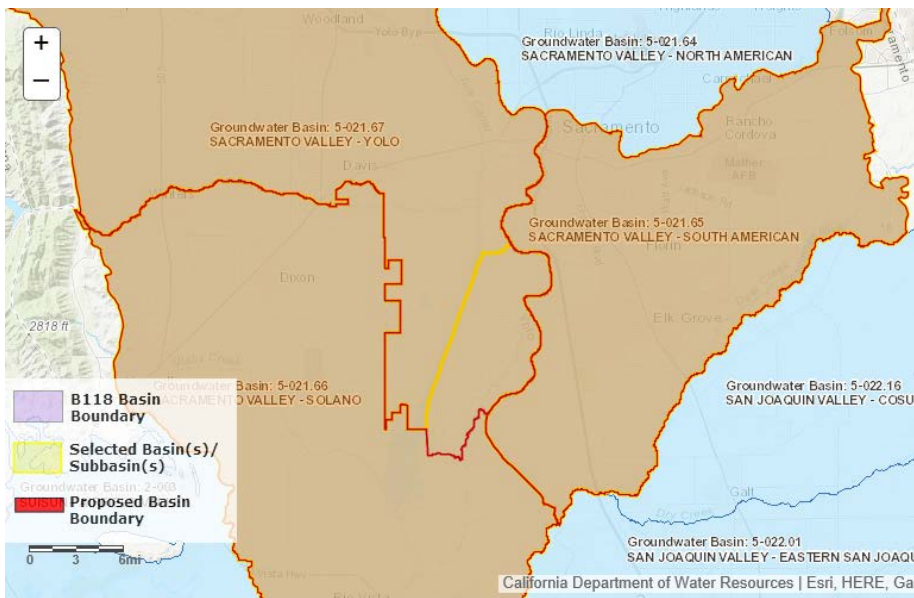
Other Affected Basins: None

DWR Draft Decision: Approve

Basis for Decision: The basin boundary modification subdivides the Tracy subbasin along the Contra Costa County line. Multiple meetings were held throughout the basin, and letters were delivered to water systems and local agencies. The requesting agency obtained the required three-quarters support from local agencies and public water systems for a jurisdictional subdivision. The request satisfies regulatory requirements for a jurisdictional subdivision.

2018 Draft Basin Boundary Modification Decision

Basin(s): 5-021.65 SACRAMENTO VALLEY – SOUTH AMERICAN; 5-021.66 SACRAMENTO VALLEY – SOLANO; 5-021.67 SACRAMENTO VALLEY - YOLO



Requesting Agency: Yolo Subbasin Groundwater Agency

Modification Category: Jurisdictional Internal

Agency Description: Modification to Incorporate RD 150 and RD 999 into the Yolo

Subbasin

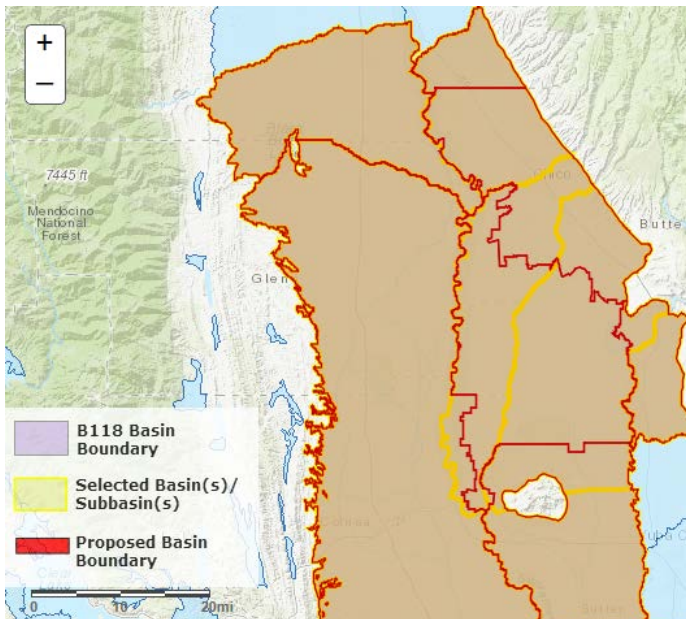
Other Affected Basins: None

DWR Draft Decision: Approve

Basis for Decision: The basin boundary modification revises the internal boundary line between Yolo and Solano subbasins to bring Yolo County Reclamation Districts 150, 307 and 999 into the Yolo Subbasin. Five letters of support are associated with this request. The request meets regulatory requirements.

2018 Draft Basin Boundary Modification Decision

Basin(s): 5-021.51 SACRAMENTO VALLEY - CORNING; 5-021.52 SACRAMENTO VALLEY - COLUSA; 5-021.57 SACRAMENTO VALLEY - VINA; 5-021.58 SACRAMENTO VALLEY - WEST BUTTE; 5-021.59 SACRAMENTO VALLEY - EAST BUTTE; 5-021.62 SACRAMENTO VALLEY - SUTTER; 5-021.69 SACRAMENTO VALLEY - WYANDOTTE CREEK



Requesting Agency: Butte County Department of Water and Resource Conservation

Modification Category: Jurisdictional Internal, Jurisdictional Consolidation

Agency Description: Jurisdictional consolidation to create the Butte basin and modify surrounding subbasins.

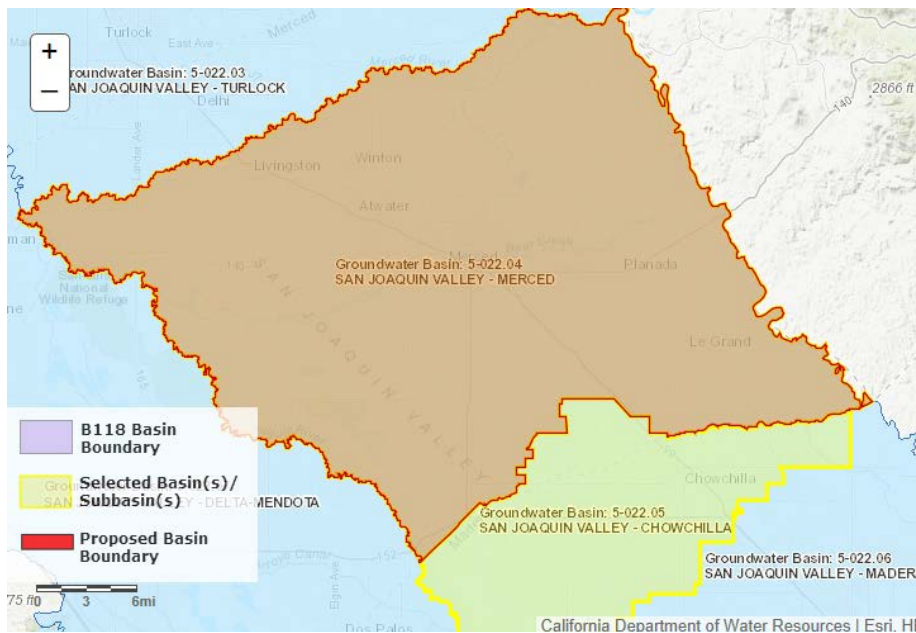
Other Affected Basins: None

DWR Draft Decision: Approve

Basis for Decision: The basin boundary modification consists of four parts. The first part revises and expands the Vina subbasin to cover groundwater dependent areas currently included in the northern portions of East Butte and West Butte subbasins. The modification extends the Butte County portion of Vina Subbasin southerly to the northern boundary of Western Canal Water District. The resulting Vina subbasin includes the City of Chico, unincorporated Durham, and the Durham Irrigation District. The second part modifies the western boundaries of the existing Butte County portion of Vina, and West Butte subbasins, near the Sacramento River to align with the Butte County line. The third part revises the southern boundary of the East Butte subbasin to follow the Butte/Sutter County line except for the Biggs-West Gridley Water District and Reclamation District 1004 jurisdictional boundaries; which results in these Districts being entirely within the resulting Butte subbasin. The fourth part consolidates the remaining East Butte and West Butte subbasin areas to form the Butte subbasin. Thirteen letters of support are associated with this request as well as the requesting agencies response to public comments. The request satisfies regulatory requirements for each jurisdictional modification.

2018 Draft Basin Boundary Modification Decision

Basin(s): 5-022.05 SAN JOAQUIN VALLEY – CHOWCHILLA; 5-022.04 SAN JOAQUIN VALLEY - MERCED



Requesting Agency: Madera County

Modification Category: Jurisdictional Internal

Agency Description: Adjust Chowchilla subbasin to a more up-to-date representation of the Madera County boundary.

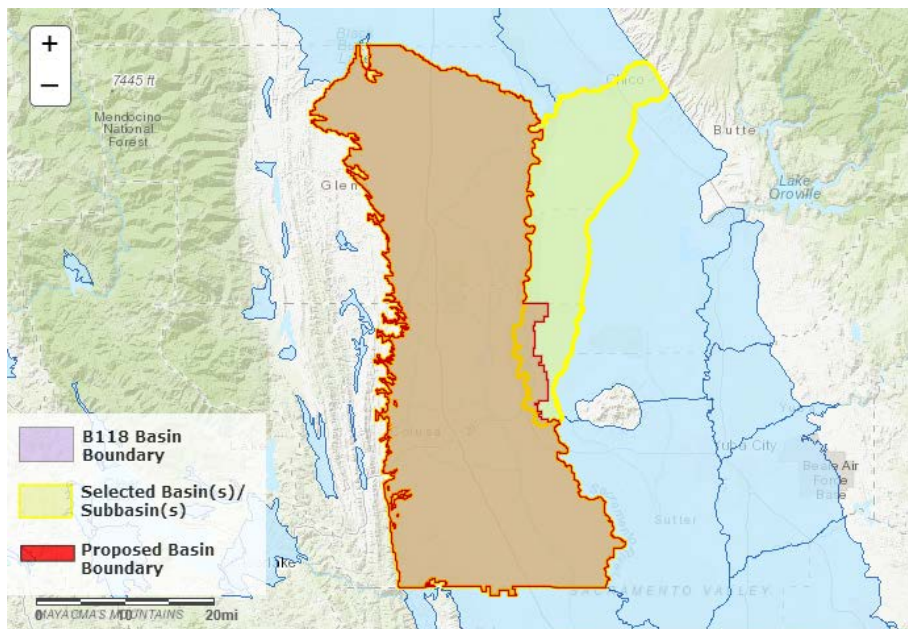
Other Affected Basins: None

DWR Draft Decision: Approve

Basis for Decision: The basin boundary modification revises the easterly part of the shared boundary of the Chowchilla and Merced subbasins to follow the Madera/Merced County line. Four letters of support are associated with this request. The request satisfies regulatory requirements for an internal jurisdictional modification.

2018 Draft Basin Boundary Modification Decision

Basin(s): 5-021.52 SACRAMENTO VALLEY – COLUSA; 5-021.58 SACRAMENTO VALLEY – WEST BUTTE



Requesting Agency: Colusa Groundwater Authority

Modification Category: Jurisdictional Internal

Agency Description: Modification to bring a portion of the West Butte subbasin into the Colusa subbasin.

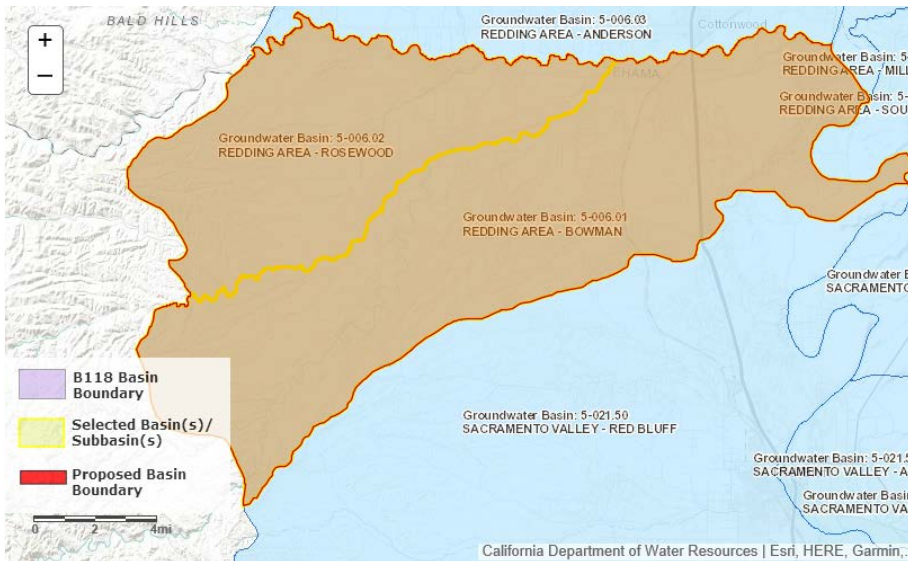
Other Affected Basins: None

DWR Draft Decision: Approve

Basis for Decision: The basin boundary modification revises the central-easterly boundary of the Colusa and West Butte subbasins to extend easterly to follow the western boundary of Reclamation District 1004. The revision places the Colusa Groundwater Authority wholly within the Colusa subbasin. Three letters of support are associated with this request. The request meets regulatory requirements.

2018 Draft Basin Boundary Modification Decision

Basin(s): 5-006.01 REDDING AREA – BOWMAN; 5-006.02 REDDING AREA – ROSEWOOD



Requesting Agency: Tehama County Flood Control and Water Conservation District

Modification Category: Jurisdictional Consolidation

Agency Description: Bowman and Rosewood subbasin consolidation.

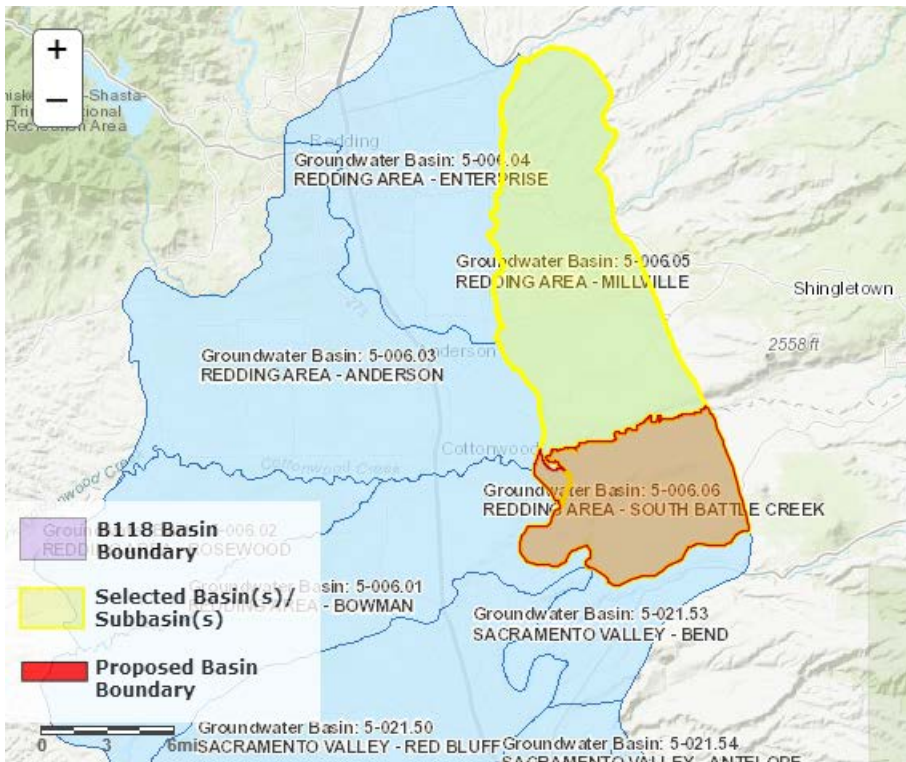
Other Affected Basins: None

DWR Draft Decision: Approve

Basis for Decision: The basin boundary modification removes the shared boundary between Bowman and Rosewood subbasins and consolidates them into a single subbasin. The requesting agency is the exclusive Groundwater Sustainability Agency in both subbasins. A letter of support is associated with this request. The request meets regulatory requirements.

2018 Draft Basin Boundary Modification Decision

Basin(s): 5-006.05 REDDING AREA – MILLVILLE; 5-006.06 REDDING AREA – SOUTH BATTLE CREEK



Requesting Agency: Tehama County Flood Control and Water Conservation District

Modification Category: Jurisdictional Internal

Agency Description: Modification to bring the Tehama County portion of the Millville subbasin into the South Battle Creek subbasin.

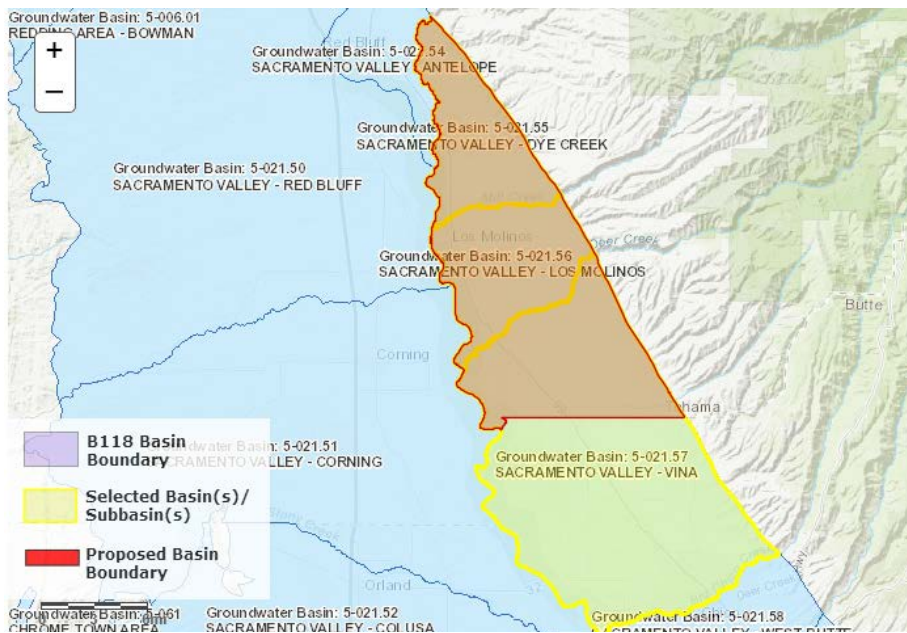
Other Affected Basins: None

DWR Draft Decision: Approve

Basis for Decision: The basin boundary modification revises the existing shared boundary between the Millville and South Battle Creek subbasins to include the Tehama County portion of the Millville subbasin entirely within the South Battle Creek subbasin. The northern boundary of the South Battle Creek aligns with the Tehama/Shasta County line. The request meets regulatory requirements.

2018 Draft Basin Boundary Modification Decision

Basin(s): 5-021.55 SACRAMENTO VALLEY – DYE CREEK; 5-021.56 SACRAMENTO VALLEY – LOS MOLINOS; 5-021.57 SACRAMENTO VALLEY - VINA



Requesting Agency: Tehama County Flood Control and Water Conservation District

Modification Category: Jurisdictional Consolidation

Agency Description: Dye Creek, Los Molinos, and Vina subbasin consolidation.

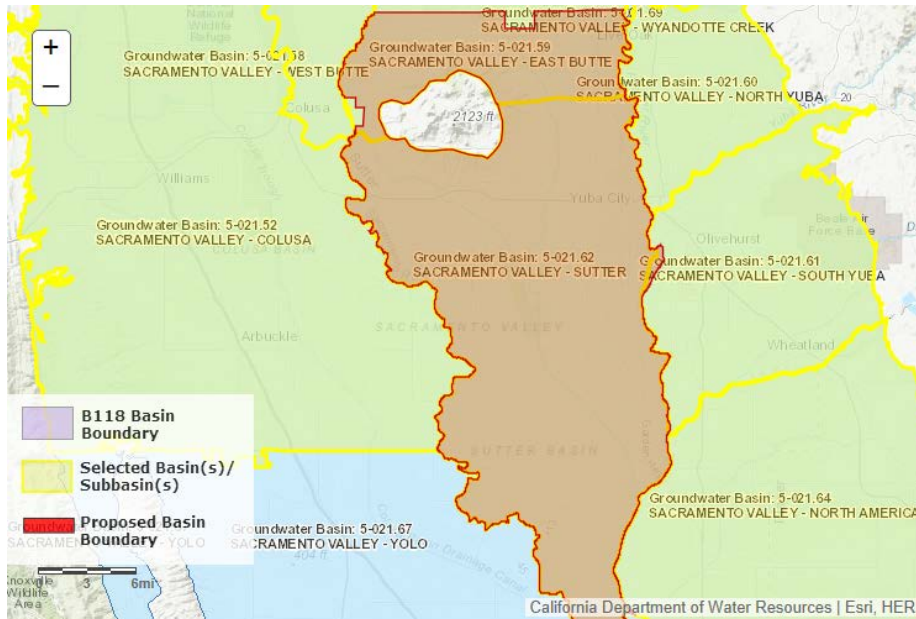
Other Affected Basins: None

DWR Draft Decision: Approve

Basis for Decision: The basin boundary modification consolidates the Dye Creek subbasin, Los Molinos subbasin, and Tehama County portion of the Vina subbasin into a single subbasin named the Los Molinos subbasin. This modification correlates with a separate request submitted by Butte County Department of Water and Resource Conservation to expand the Butte County portion of the Vina subbasin. Three letters of support are associated with this request. The request meets regulatory requirements.

2018 Draft Basin Boundary Modification Decision

Basin(s): 5-021.62 SACRAMENTO VALLEY - SUTTER; 5-021.52 SACRAMENTO VALLEY - COLUSA; 5-021.58 SACRAMENTO VALLEY - WEST BUTTE; 5-021.59 SACRAMENTO VALLEY - EAST BUTTE; 5-021.60 SACRAMENTO VALLEY - NORTH YUBA; 5-021.61 SACRAMENTO VALLEY - SOUTH YUBA; 5-021.64 SACRAMENTO VALLEY - NORTH AMERICAN



Requesting Agency: Sutter County

Modification Category: Jurisdictional Internal

Agency Description: Modify Sutter subbasin to match the Sutter County line.

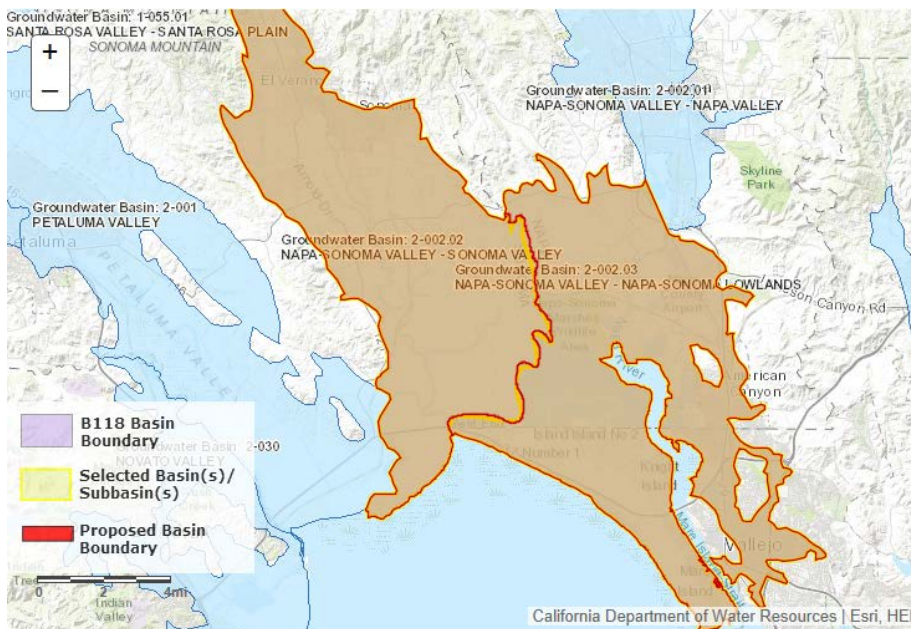
Other Affected Basins: None

DWR Draft Decision: Approve

Basis for Decision: The basin boundary modification revises and extends the northern boundary of the Sutter subbasin north to match the Sutter County line, except where the Biggs-West Gridley Water District jurisdictional boundary lies within Sutter County. The eastern boundary of the East Butte subbasin, the eastern boundary of the Sutter subbasin, and the northern boundary of the North American subbasin are revised to align with the Sutter and Yuba County line, except where the Yuba County Water Agency lies within Sutter County. The western boundary of the Sutter and East Butte subbasins are revised to follow the Sutter and Colusa County line, except where Reclamation District 1004 lies within Sutter County. This modification correlates with another request submitted by Butte County Department of Water and Resource Conservation to create the Butte subbasin. Two letters of support are associated with the modification. The request meets regulatory requirements.

2018 Draft Basin Boundary Modification Decision

Basin(s): 2-002.02 NAPA-SONOMA VALLEY - SONOMA VALLEY; 2-002.03 NAPA-SONOMA VALLEY - NAPA-SONOMA LOWLANDS



Requesting Agency: Sonoma Valley Groundwater Sustainability Agency

Modification Category: Jurisdictional Internal

Agency Description: Modify subbasins to align with County boundaries.

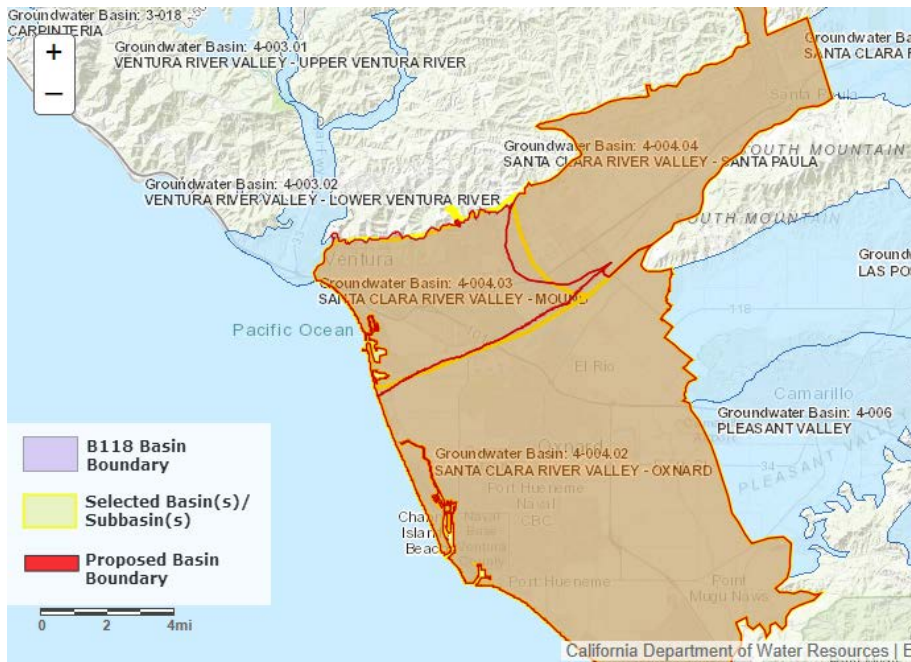
Other Affected Basins: None

DWR Draft Decision: Approve

Basis for Decision: The basin boundary modification revises and aligns the shared boundary between Sonoma Valley and Sonoma Lowlands to follow the Sonoma/Napa County line. Four letters of support are associated with this request. The request meets regulatory requirements.

2018 Draft Basin Boundary Modification Decision

Basin(s): 4-004.02 SANTA CLARA RIVER VALLEY - OXNARD; 4-004.03 SANTA CLARA RIVER VALLEY - MOUND; 4-004.04 SANTA CLARA RIVER VALLEY - SANTA PAULA



Requesting Agency: Mound Basin Groundwater Sustainability Agency

Modification Category: Scientific External, Jurisdictional Internal

Agency Description: Four proposed modifications: three jurisdictional internal and one

scientific external.

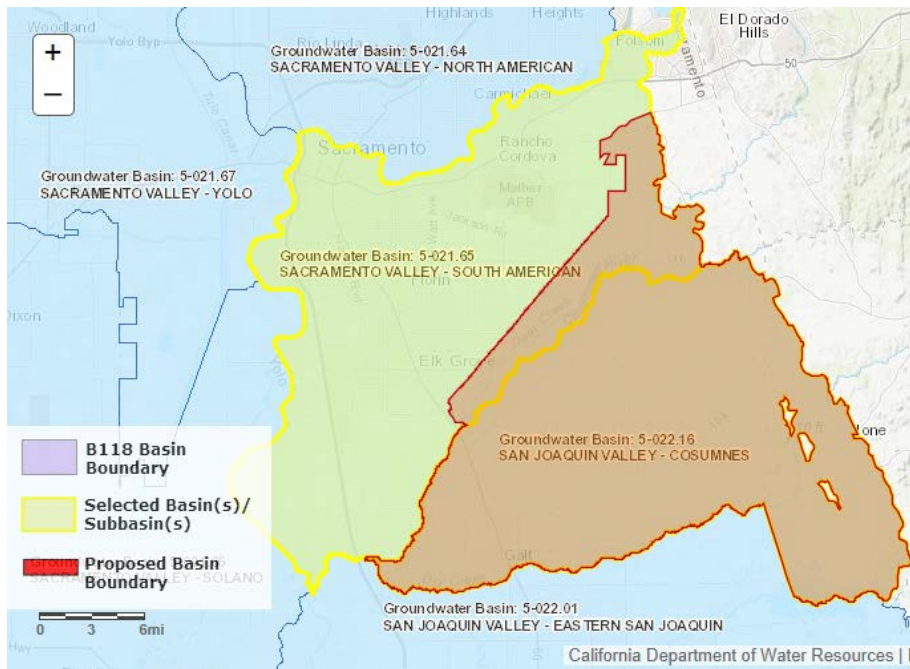
Other Affected Basins: None

DWR Draft Decision: Approve

Basis for Decision: The basin boundary modification revises and aligns the shared boundary between the Mound and Santa Paula subbasins to align with the Santa Paula adjudicated boundary. The modification also revises the shared boundary between the Oxnard, Mound and Santa Paula subbasins to align with the Fox Canyon Groundwater Management Agency's boundary and the Santa Paula adjudication boundary, where applicable. The scientific modification along the northern boundary of the Mound subbasin follows mapped alluvial units using a more detailed, 1:24,000 scale, qualified map. Two letters of support are associated with this request. The requesting agency supplies sufficient information to support the scientific rationale for modification and meets regulatory requirements.

2018 Draft Basin Boundary Modification Decision

Basin(s): 5-021.65 SACRAMENTO VALLEY - SOUTH AMERICAN; 5-022.16 SAN JOAQUIN VALLEY - COSUMNES



Requesting Agency:
Sloughhouse Resource Conservation District

Modification Category:
Jurisdictional Internal

Agency Description: Shift the South American and Cosumnes subbasin boundary approximately two

to four miles.

Other Affected Basins: None

DWR Draft Decision: Deny

Basis for Decision: The boundary modification would revise a portion of the shared boundary between the Cosumnes and South American subbasins to expand and incorporate the jurisdictional areas of Sloughhouse Resource Conservation District and (SRCD) and Omochochumne-Hartnell Water District (OHWD). The revised boundary would then follow the northern boundaries of the SRCD and OHWD jurisdictional boundaries. Four letters of support and two letters of opposition are associated with this request. Letters of opposition were provided by the Sacramento Central Groundwater Authority and the City of Sacramento. The requesting agency did not sufficiently demonstrate the proposed modification would result in improved groundwater management. The request does not fully meet the requirements of the regulations.

2018 Draft Basin Boundary Modification Decision

Basin(s): 3-018 CARPINTERIA



Requesting Agency:
Carpinteria Valley Water District

Modification Category:
Scientific External

Agency Description:
Scientific modification to conform to the latest geologic mapping of Quaternary unconsolidated

sediments.

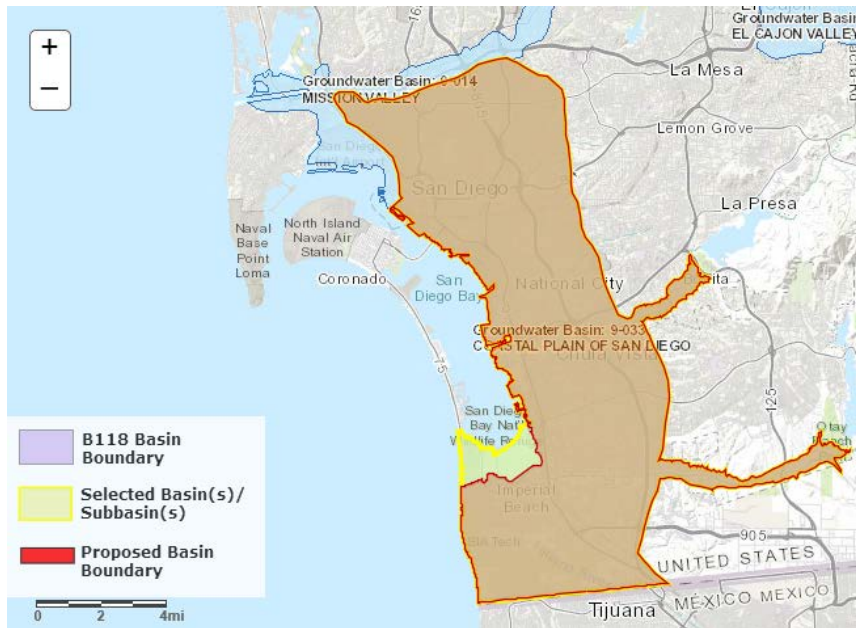
Other Affected Basins: None

DWR Draft Decision: Approve

Basis for Decision: The basin boundary modification revises the external boundary to follow geologic contacts based on recent geologic mapping published by the USGS. The request includes sufficient scientific rationale for the modification. Letters of support from Santa Barbara County and Montecito Water District are associated with request. The request meets regulatory requirements.

2018 Draft Basin Boundary Modification Decision

Basin(s): 9-033 COASTAL PLAIN OF SAN DIEGO



Requesting Agency:
Sweetwater Authority

Modification Category:
Scientific External

Agency Description: The modification removes the south San Diego Bay salt ponds, aligns with the south part of the bay.

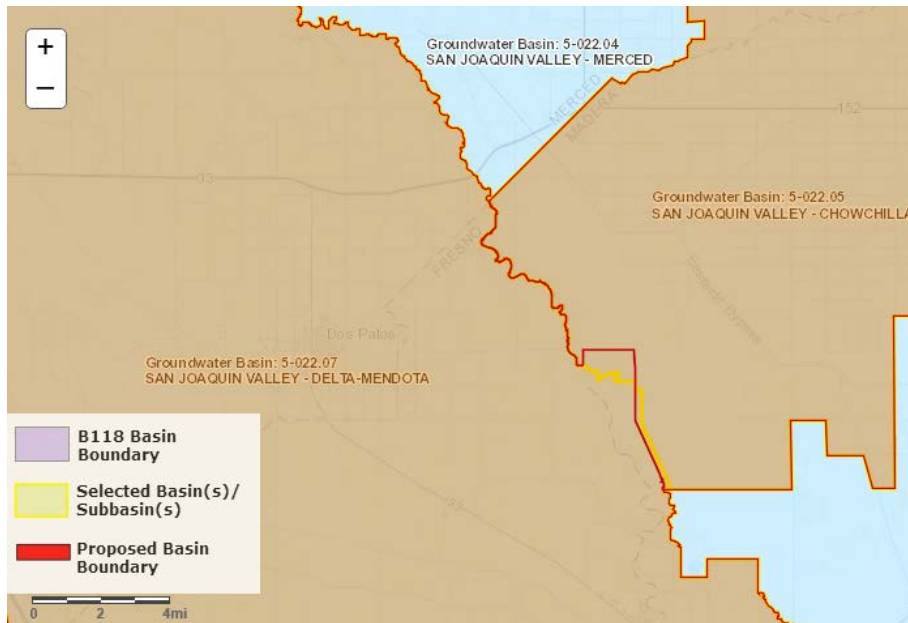
Other Affected Basins: None

DWR Draft Decision: Deny

Basis for Decision: The external scientific Basin Boundary Modification submitted by the Sweetwater Authority for the Coastal Plain of San Diego Basin requested to modify the basin boundary to align with the south bay which would remove the south San Diego Bay salt ponds and a portion of the Silver Strand Peninsula. A geologic map and other technical studies were submitted to support the proposed exclusion areas as non-aquifer/ non-basin material. The request lacked sufficient scientific data that demonstrated the south San Diego Bay Salt Ponds and the Silver Strand Peninsula areas are non-aquifer/ non-basin material. For this reason, the Sweetwater Authority request was denied.

2018 Draft Basin Boundary Modification Decision

Basin(s): 5-022.07 SAN JOAQUIN VALLEY - DELTA-MENDOTA: 5-022.05 SAN JOAQUIN VALLEY - CHOWCHILLA



Requesting Agency: San Joaquin River Exchange Contractors Water Authority

Modification Category: Jurisdictional Internal

Agency Description: Boundary modification between Delta-Mendota and Chowchilla subbasins following the boundaries of Triangle T WD and Clayton WD.

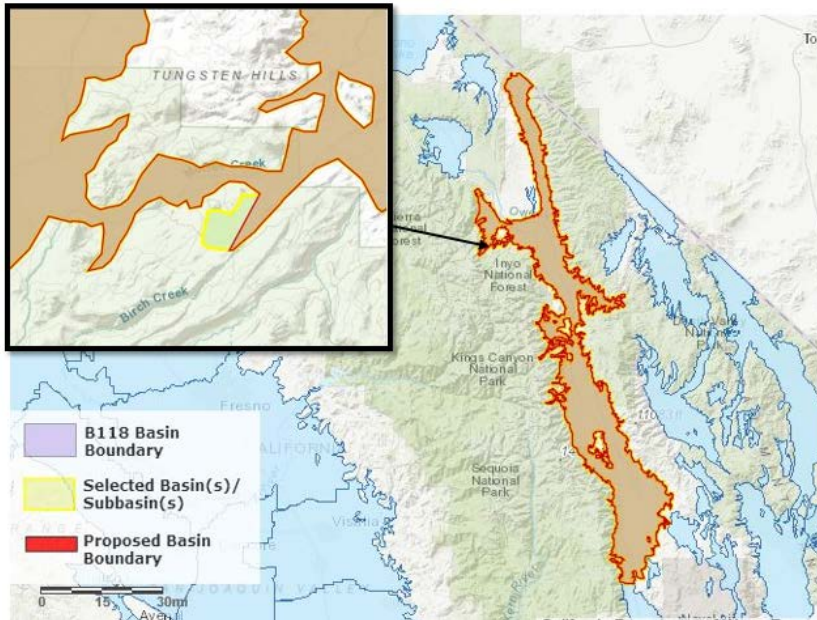
Other Affected Basins: None

DWR Draft Decision: Approve

Basis for Decision: The basin boundary modification would revise a portion of the shared boundary between the Chowchilla and Delta-Mendota subbasins to align with the jurisdictional boundaries of Triangle T Water District and Clayton Water District. Three letters of support and one letter of opposition are associated with this request. This request meets regulatory requirements.

2018 Draft Basin Boundary Modification Decision

Basin(s): 6-012.01 OWENS VALLEY



Requesting Agency: Starlite Community Services District

Modification Category: Scientific External

Agency Description: This boundary modification is intended to exclude the horseshoe shaped pocket formed by the approx. 1/2 sq. mile area of McGee Meadow, and specifically the 160 acres of Starlite Estates, from the Owens

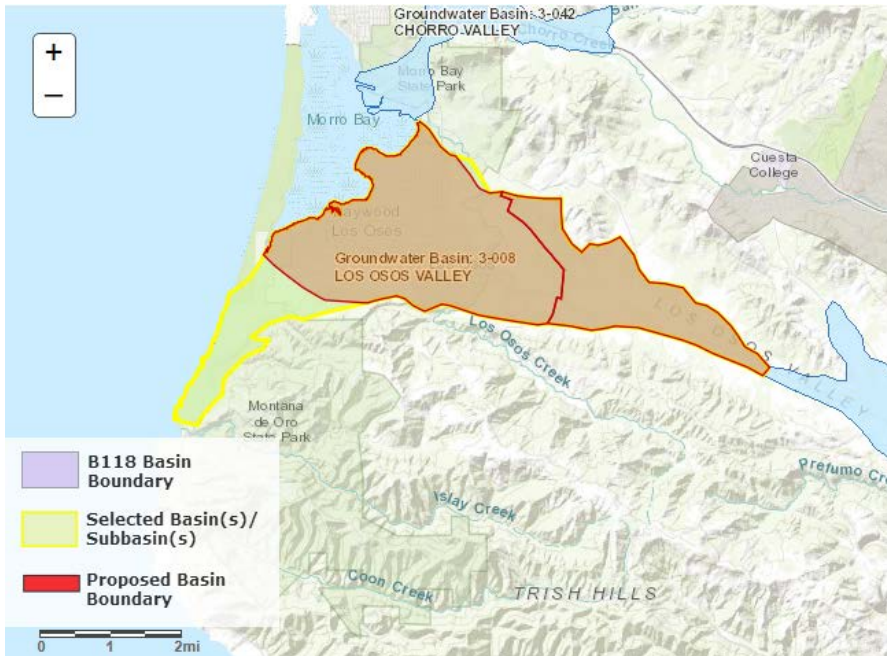
Valley Groundwater Basin **Other Affected Basins:** None

DWR Draft Decision: Approve

Basis for Decision: The basin boundary modification revises a minor portion of the external boundary of Owens Valley basin near Starlite Community Services District and McGee Meadows. The existing area mapped as alluvium was shown to contain glacial till, which is not considered alluvium. The agency submitted sufficient scientific evidence to support an external boundary modification. This request meets regulatory requirements.

2018 Draft Basin Boundary Modification Decision

Basin(s): 3-008 LOS OSOS VALLEY



Requesting Agency: San Luis Obispo County

Modification Category: Jurisdiction Subdivision, Scientific External

Agency Description: Includes a jurisdictional basin subdivision (two subbasins) and scientific external removal of two non-basin areas from the

Los Osos Basin.

Other Affected Basins: None

DWR Draft Decision: Approve and Deny a Portion

Basis for Decision: The basin boundary modification revises the existing Los Osos Valley basin with three components; one jurisdictional subdivision and two scientific external modifications. The jurisdictional subdivision follows the easterly extent of the existing adjudication boundary and creates the Los Osos Area subbasin on the west and the Warden Creek subbasin on the east. All required support from local agencies and public water systems was obtained by the requesting agency. A scientific external modification revises the southern portion of the basin (Montana de Oro area) that removes the area due to the presence of the Los Osos Fault system (which forms a hydrologic barrier) and due to demonstration that the area south of the fault system is non-aquifer material. These two components of the request meet all regulatory requirements.

A scientific external modification for a minor area in the northern part of the basin (Minor Fringe Exclusion Area) would remove the area from the Los Osos Basin. This portion of the request lacks scientific evidence that demonstrates the area is hydraulically disconnected from the Los Osos Valley Basin. This portion of the request does not fully meet the requirements of the regulations.

2018 Draft Basin Boundary Modification Decision

2018 Draft Basin Boundary Modification Decision

Basin(s): 3-012 SANTA MARIA



Requesting Agency: Santa Barbara County Water Agency

Modification Category: Scientific External

Agency Description: Scientific External Modification of the Santa Maria Groundwater Basin to eliminate fringe areas.

Other Affected Basins: None

DWR Draft Decision: Deny

Basis for Decision: The basin boundary modification would revise external boundaries and remove areas outside of the Santa Maria Basin adjudication boundary within the Santa Barbara County portion of the Santa Maria Basin. The request includes four components: Southwestern fringe, Orcutt Hill fringe, Sisquoc River fringe, and Tepusquet Creek fringe. The request does not fully meet the requirements of the regulations.

The Southwestern fringe part is denied due to discrepancies between the requested linework and the submitted geologic maps. The Orcutt Hill fringe part is denied due to insufficient information and data to accurately determine where groundwater flow direction changes along the Soloman Hills anticline. The Sisquoc River fringe part is denied due to the clear hydrogeologic connection between the alluvial units present within the Sisquoc River fringe area and the Santa Maria Basin adjudicated area. The Tepusquet Creek fringe part is denied due to alluvium in the fringe area being greater than 25-feet thick, and a clear hydrogeologic connection between the alluvium in the Tepusquet Creek fringe area and the Santa Maria Basin adjudicated area.

2018 Draft Basin Boundary Modification Decision

Basin(s): 3-012 SANTA MARIA



Requesting Agency:
County of San Luis Obispo Groundwater Sustainability Agency

Modification Category: Scientific External, Scientific Internal

Agency Description:
A scientific modification request to subdivide and exclude portions of the Santa Maria Basin.

Other Affected

Basins: None

DWR Draft Decision: Approve and Deny a Portion

Basis for Decision: The basin boundary modification includes the removal of basin areas outside of the Santa Maria Basin adjudicated boundary within the San Luis Obispo County portion of the Santa Maria Basin. There are five components to the request: remove the Pismo Creek Valley area, Nipomo Valley area, Southern Bluffs area, Ziegler Canyon area; and subdivide the Arroyo Grande Creek Valley area at the Santa Maria Basin adjudicated boundary, creating a new subbasin.

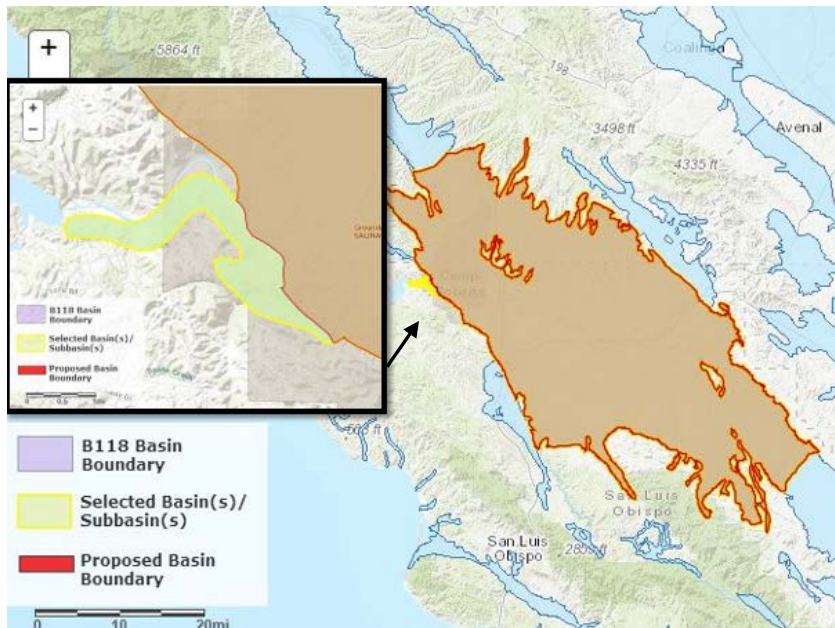
The revision to remove the Pismo Creek Valley area is supported by geologic mapping and alluvial thickness data. The revision to remove the Nipomo Valley and Southern Bluffs fringe areas is also supported by sufficient scientific evidence that illustrates the presence of thin alluvium which water may percolate into and subsequently flow through into the main Santa Maria basin; however, these areas do not store sufficient groundwater for economic or beneficial use. The subdivision of the Arroyo Grande Creek Valley area and the creation of a new Santa Maria River Valley – Arroyo Grande subbasin is supported by sufficient geologic evidence illustrating disparate hydrogeologic conditions on each side of the fault (fault offset, alluvial thickness, and groundwater level data). These four components of the request meet the regulatory requirements.

2018 Draft Basin Boundary Modification Decision

The removal of the Ziegler Canyon Fringe Area is not supported by sufficient scientific evidence as there is clear hydrogeologic connection between the alluvium within the Ziegler Canyon fringe area and the proposed Santa Maria Basin. This portion of the request does not fully meet the requirements of the regulations.

2018 Draft Basin Boundary Modification Decision

Basin(s): 3-004.06 SALINAS VALLEY - PASO ROBLES AREA



Requesting Agency: Heritage Ranch Community Services District

Modification Category: Scientific External

Agency Description: Establish the structurally controlled geologic contact and a portion of the Rinconada Fault system as the western Paso Robles Basin boundary in the

area of the Nacimiento River.

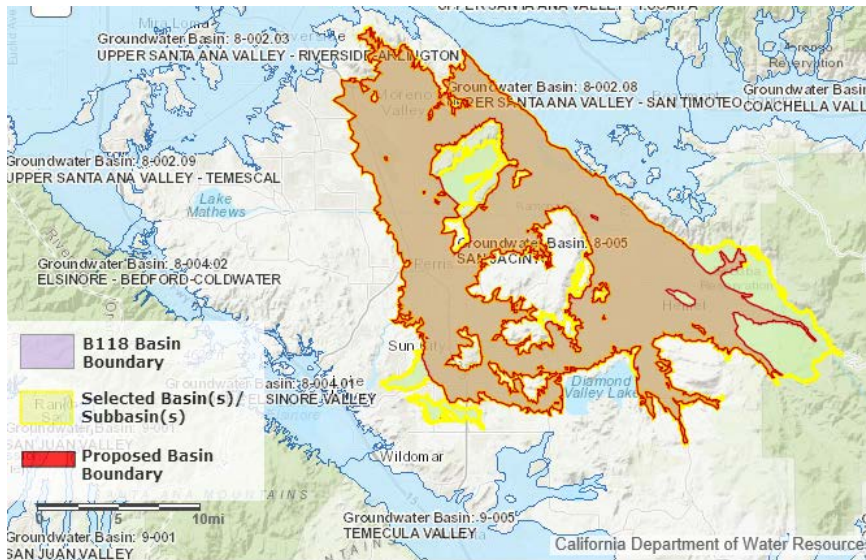
Other Affected Basins: None

DWR Draft Decision: Deny

Basis for Decision: The basin boundary modification would revise a minor part of western external boundary of the Paso Robles Area subbasin. The request includes technical information suggesting a part of the revised boundary that includes a local fault and geologic contacts act as hydrologic barriers. The request also includes information on subsurface conditions and land and water use. Two letters of support are associated with this request. The requesting agency did not provide sufficient scientific evidence to support the Nacimiento River Valley being hydrologically disconnected from the Paso Robles Area subbasin. The request does not fully meet the requirements of the regulations.

2018 Draft Basin Boundary Modification Decision

Basin(s): 8-005 SAN JACINTO



Requesting Agency: Eastern Municipal Water District

Modification Category: Scientific External, Scientific Internal

Agency Description: Modify the boundary of San Jacinto scientifically to better represent the local groundwater aquifer conditions.

Other Affected Basins: None

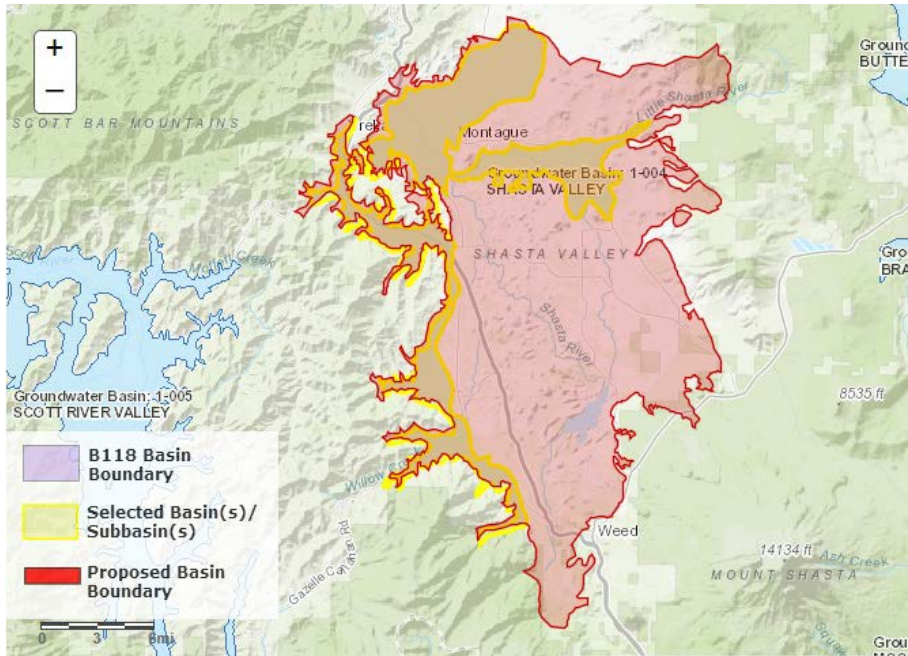
DWR Draft Decision: Approve and Deny a Portion

Basis for Decision: The basin boundary modification request includes the revision of both internal and external boundaries. The request contains six components that utilize qualified geologic maps, alluvial thickness, borehole analysis, and topographic gradients to better define the boundaries of the basin. One letter of support is associated with this request. Five of the six components of the request meet all regulatory requirements.

The removal of the Lake Perris area is denied and not supported by sufficient geologic evidence. The agency did not sufficiently demonstrate that the Lake Perris area is hydrologically disconnected from San Jacinto Basin.

2018 Draft Basin Boundary Modification Decision

Basin(s): 1-004 SHASTA VALLEY



Requesting Agency: Siskiyou County Flood Control and Water Conservation District

Modification Category: Scientific External

Agency Description: To expand the Shasta Valley Basin to include the regional volcanic aquifer.

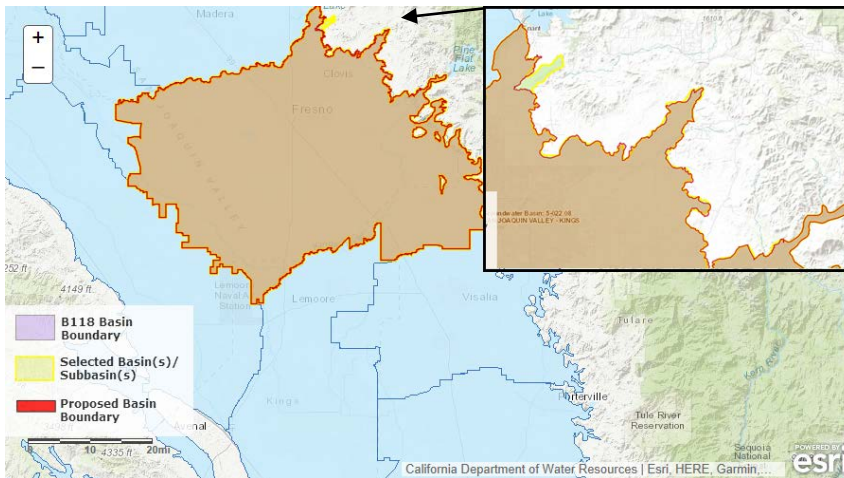
Other Affected Basins: None

DWR Draft Decision: Deny

Basis for Decision: The external scientific basin boundary modification submitted by Siskiyou County Flood Control and Water Conservation District, requested the Shasta Valley Basin to include local area volcanic material. The agency submitted scientific studies and geologic maps to help demonstrate the local volcanic material is the principle aquifer in the Shasta Valley Basin. The request lacked scientific data to demonstrate local volcanic material meets the definition of “aquifer” and subsequently “basin” as defined by the Basin Boundary Emergency Regulations and Bulletin 118. Because of this reason the Siskiyou County Flood Control and Water Conservation District’s request was denied.

2018 Draft Basin Boundary Modification Decision

Basin(s): 5-022.08 SAN JOAQUIN VALLEY - KINGS



Requesting Agency:
North Kings
Groundwater
Sustainability Agency

**Modification
Category:** Scientific
External

Agency Description:
Modify the eastern
boundary of the Kings
subbasin such that the
eastern boundary
more closely aligns
with the
alluvial/bedrock

boundary.

Other Affected Basins: None

DWR Draft Decision: Approve

Basis for Decision: The basin boundary modification revises the northeastern external boundary of the Kings subbasin to more accurately map the contact between alluvial units and non-alluvial geologic units. The requesting agency provided sufficient scientific rationale and utilized a qualified map for the boundary revision. This request meets regulatory requirements.

2018 Draft Basin Boundary Modification Decision

Basin(s): 5-022.14 SAN JOAQUIN VALLEY - KERN COUNTY



Requesting Agency: West Kern Water District

Modification Category: Scientific External

Agency Description: The BBM request proposed to modify portions of the southern and western boundary of the Kern County Groundwater Subbasin (5-

22.14).

Other Affected Basins: None

DWR Draft Decision: Deny

Basis for Decision: The basin boundary modification would revise the western external boundary of the Kern County subbasin to remove portions of the basin that contain older sedimentary rock units and areas of thin alluvium. The boundary revision includes a small portion of external boundary that follows a jurisdictional boundary (Henry Miller Water District) rather than using scientific rationale. The submitted scientific information is intended to support the proposed boundary following the contact between older and younger alluvial units; however, deviations from the proposed contacts were noted along several portions of the proposed modification. The agency also suggested some areas of revision did not contain sufficient thickness of alluvium. However, drillers logs in these areas depict that the alluvium is sufficiently thick and should be considered basin material. Additionally, the proposed basin boundary deviates from the geologic contacts to follow the Henry Miller Water District GSA boundary with no scientific rationale to support. The request did not provide sufficient scientific evidence or justification to support the modification. The request does not fully meet the requirements of the regulations.

2018 Draft Basin Boundary Modification Decision

2018 Draft Basin Boundary Modification Decision

Basin(s): 5-021.65 SACRAMENTO VALLEY - SOUTH AMERICAN; 5-022.01 SAN JOAQUIN VALLEY - EASTERN SAN JOAQUIN; 5-021.66 SACRAMENTO VALLEY - SOLANO



Requesting Agency: Northern Delta Groundwater Sustainability Agency

Modification Category: Jurisdictional Subdivision

Agency Description: Jurisdictional subdivision to create new subbasin in the northern portion of the San Joaquin

River Delta.

Other Affected Basins: None

DWR Draft Decision: Deny

Basis for Decision: Basin Boundary regulations (23 CCR § 344 et seq.) specify information that must be provided by the requesting agency to support a basin boundary modification request. DWR reviewed the modification requests following the methodology and criteria set forth in the regulations (23 CCR § 345 et seq.).

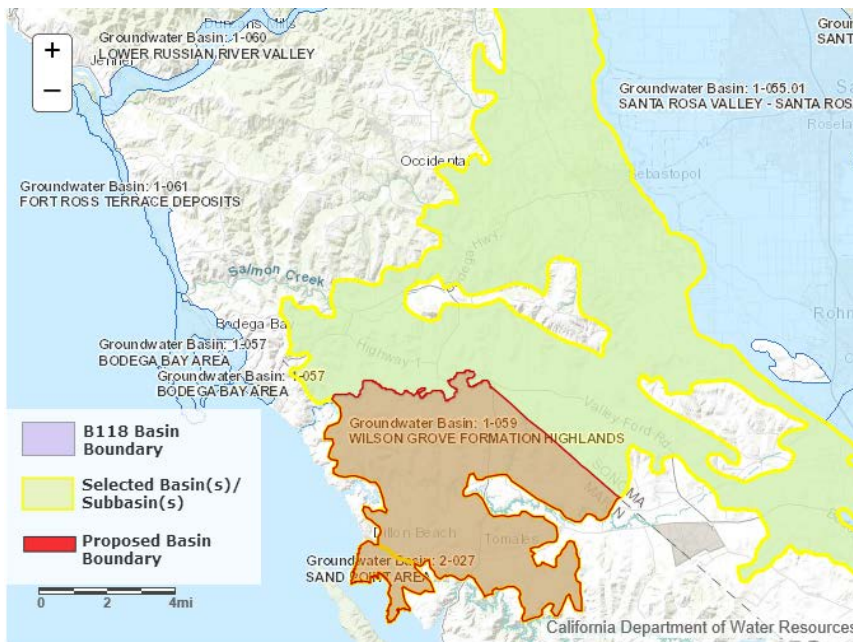
The DWR has reviewed and denied your request based on 23 CCR § 345.2(d). The boundary modification request intended to subdivide three basins; Sacramento Valley-South American, Sacramento Valley- Solano, and San Joaquin Valley- Eastern San Joaquin. The requested subdivision followed along GSA boundaries which would form the proposed Northern Delta Subbasin. For this reason, only the jurisdictional subdivision type is appropriate. This type of request requires support of 75% of all local agencies and public water systems within the affected basin(s). While the information provided with the request documents the support from 22 local agencies within the proposed Northern Delta subbasin, the request failed to provide the required support of all local agencies and public water systems in the affected Bulletin-118 basins; in this case, the South American, Solano, and Eastern San Joaquin subbasins. The request

2018 Draft Basin Boundary Modification Decision

was denied because not all public water systems and local agencies were included and thus the 75% support standard was not met.

2018 Draft Basin Boundary Modification Decision

Basin(s): 1-059 WILSON GROVE FORMATION HIGHLANDS; 2-027 SAND POINT AREA



Requesting Agency:
Marin County

Modification Category:
Jurisdictional Internal

Agency Description:
Internal boundary modification that would extend the Sand Point Area Basin to include the portion of the Wilson Grove Formation Highlands Basin currently in Marin County. The new boundary would be the county line.

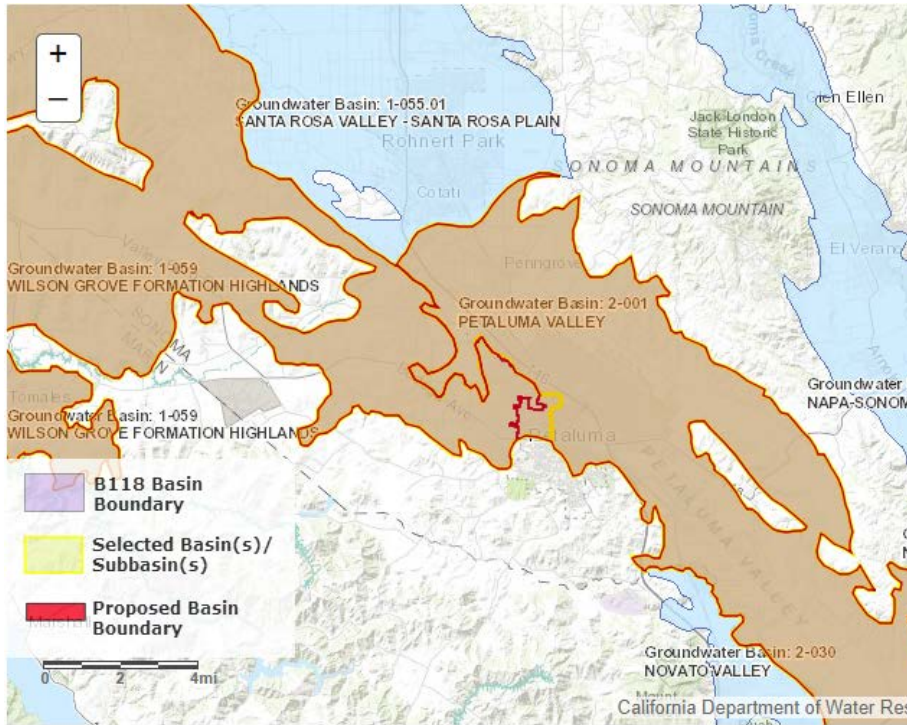
Other Affected Basins: None

DWR Draft Decision: Approve

Basis for Decision: The basin boundary modification request would move the existing shared boundary between Sand Point Area basin and Wilson Grove Formation Highlands basin to align with the Marin County line. Six letters of support are associated with this request. This request meets regulatory requirements.

2018 Draft Basin Boundary Modification Decision

Basin(s): 1-059 WILSON GROVE FORMATION HIGHLANDS; 2-001 PETALUMA VALLEY



Requesting Agency: City of Petaluma

Modification Category: Jurisdiction Internal

Agency Description: Modify Petaluma Valley Groundwater Basin to incorporate the jurisdictional area of the City of Petaluma that is currently in the

Wilson Grove Formation Highlands Basin.

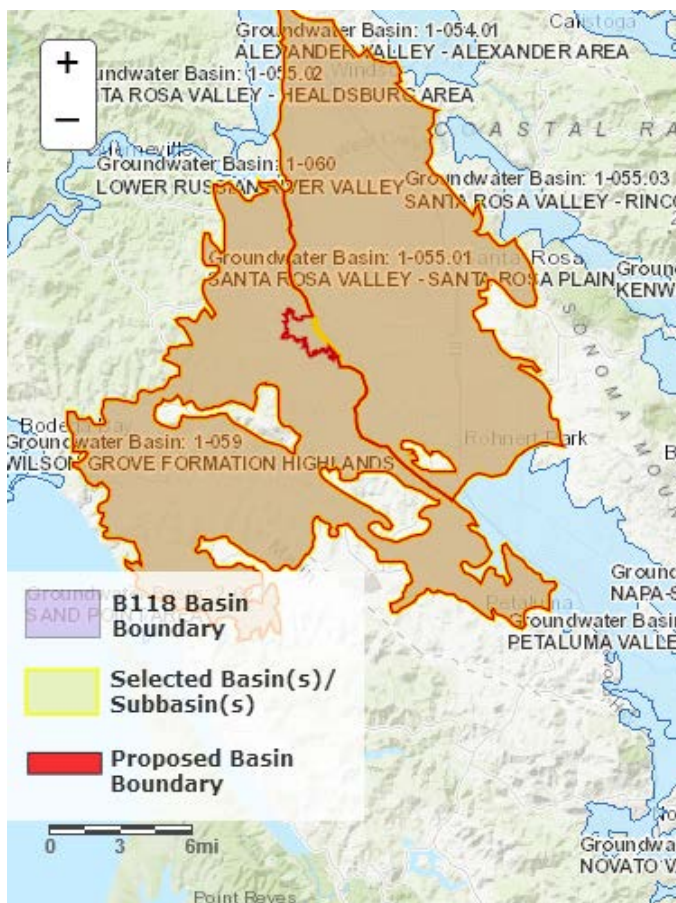
Other Affected Basins: None

DWR Draft Decision: Approve

Basis for Decision: The basin boundary modification request would revise a portion of the existing shared boundary between the Petaluma Valley basin and the Wilson Grove Formation Highlands basin. The revision would shift a portion of the shared boundary so the vast majority of the City of Petaluma is within the Petaluma Valley basin. Two letters of support are associated with this request. The request meets regulatory requirements.

2018 Draft Basin Boundary Modification Decision

Basin(s): 1-055.01 SANTA ROSA VALLEY – SANTA ROSA PLAIN; 1-059 WILSON GROVE FORMATION HIGHLANDS



Requesting Agency: City of Sebastopol

Modification Category: Jurisdiction Internal

Agency Description: Modify the Santa Rosa Plain Sub-basin to incorporate the jurisdictional areas of the City of Sebastopol, Belmont Terrace MWC, Fircrest MWC, and Kelly MWC that are currently in the Wilson Grove Formation Highlands Basin.

Other Affected Basins: None

DWR Draft Decision: Approve

Basis for Decision: The basin boundary modification request would revise a portion of the existing shared boundary between the Santa Rosa Plain subbasin and the Wilson Grove Formation Highlands basin. The request would modify a portion of the western boundary of the Santa Rosa Plain subbasin such that the City of Sebastopol, Belmont Terrace Mutual Water Company (MWC), Fircrest MWC, and Kelly MWC would be entirely within the Santa Rosa Plain subbasin. Six letters of support are associated with this request. The request meets regulatory requirements.